

## Product datasheet for RC215820

### USP31 (NM\_020718) Human Tagged ORF Clone

#### Product data:

Product Type:	Expression Plasmids
Product Name:	USP31 (NM_020718) Human Tagged ORF Clone
Tag:	Myc-DDK
Symbol:	USP31
Mammalian Cell Selection:	Neomycin
Vector:	pCMV6-Entry (PS100001)
E. coli Selection:	Kanamycin (25 ug/mL)
ORF Nucleotide Sequence:	>RC215820 representing NM_020718 Red=Cloning site Blue=ORF Green=Tags(s)

TTTTGTAATACGACTCACTATAGGGCGGCCGGGAATTCGTCGACTGGATCCGGTACCGAGGAGATCTGCC  
GCCCGATCGCC

ATGTCCAAGGTAACGGCGCCTGGGTCCGGGCCGCCGGCGCGCGAGCGGGAAGGAGAAGCGCTCCTTCA  
GCAAGCGGCTGTTTCGGAGCGGCCGCGCTGGCGGCGCGCGCGGGGGCCCCGGGGCGTCCGGGCCGGC  
CGCGCCTTCTCGCCCTCCTCGCCCTCCTGACGCTCGGTGGGAGCTTCATGAGCCGCTTCTCAAG  
ACGCTGTCCACGCTCTCGCACCTTAGCTCTGAGGGCGCCGCCAGACCGCGCGCCCTCCGCGCCGCT  
TCCCGCCGGGCCCGCCGCGCGCCACGCGCCGCGCTGCCCGCCCGCCCGCTCCTCCGCGCCGCC  
CGCTTGGCGCCGAGCGGTGCCGCGCTGGCGGGCTCCGCAACCACGCAACACGTGCTTCATGAAC  
GCCACGCTGCAGTGCCTCAGCAACACCGAGCTCTTCGCCGAGTACCTGGCGCTGGGCCAGTACCGGGCGG  
GGCGGCCCGAGCCCTCGCCTGACCCGGAGCAGCCTGCGGGCCGCGCGCAGGGCCAGGGCGAGGTAC  
TGAGCAGCTGGCGCACCTGGTGGCGCCCTCTGGACCCTGGAGTACACCCCGCAGCACAGCCGCGACTTC  
AAGACTATTGTGTCAAAGAATGCACTGCAGTACCGGGAAATCCCAACATGATGCCAGGAGTTTCTGC  
TGTGGCTTTTGGACCGAGTTCATGAAGACCTCAACCATTAGTGAAGCAGAGTGGCCAGCCTCCTTGAA  
GCCACCATCAGAGACTGATATGATGCCTGAGGGACCATCTTCCCTGTCTGTAGCACTTTTGTACAAGAA  
CTCTTTCAAGCGCAATACAGATCTTCTTTGACGTGTCCTATTGTGAGAAACAGAGCAACACTTTTGATC  
CTTTCCTTTGCATTTCTTTGCCAATTCCTGCCCCACACAAGGCTCTCTATGTCACTGTAGTGTATCA  
AGGCAATGTTCTCACTGCATGAGGATTGGTGTGGCCGTACCTCTGTCTGGGACTGTCCGACAGCTTCGG  
GAAGCAGTGTCTATGGAAACAAAGATCCCCACTGATCAGATTGTGTTAACAGAAATGACTATGATGGGT  
TCCATCGTTCTTTTGTGATACAGACGACCTGGAAACAGTCCATGAAAGCGACTGCATTTTTGCCTTTGA  
GACTCCCGAAATATTTAGGCCTGAAGGAATTCAGTCAAAGAGGAATTCATTTAAACAACAACCTAAAC  
CACTTGAAATTTGGCTTGGATTATCATAGACTGTCTTCTCCTACACAAACAGCAGCAAAGCAGGGGAAAA  
TGGATTCTCCACATCAAGAGCAGGCAGCGACAAGATTGCTGTTGGTGTGTAACCGAGCCTGCAGTGG  
GCAACAAGGGAAAAGATTTGGACTGCCTTTTGTGCTGCACTTAGAGAAGACAATAGCTTGGGACCTCTG  
CAGAAGGAAATCTTGGAGAAGATGAAGTATTTCTTGGAGCCACGGTTTGCACTCAGGTGTGTCCATTCA  
GCTTGCCTGTGGTCACTGTTGTTGGAATAACATATTTGCTGCCCCAGGAGGAGCAGCCCTTGTGCCACCC



View online »

AATAGTAGAAAGGGCATTAAAATCTTGTGGACCAGGTGGCACTGCTCATGTGAAATTAGTAGTCGAGTGG  
GACAAGGAGACAAGAGATTTCTTATTTGTAATACTGAGGATGAGTATATTCCTGATGCAGAAAGTGTC  
GTCTGCAAAGGGAGCGTCATCATCAGCCTCAAACCTGCACTTTATCCCAGTGTTCCTCAACTGTACACCAA  
AGAGGAGCGGCTTGCCCCGATGATGCCTGGCGTTGCCACACTGTAAGCAGCTGCAGCAGGGAAGCATT  
ACGTTAAGCCTCTGGACTCTGCCTGATGTGCTTATTATACATCTAAGAGATTTCCGGCAGGAAGGAGACA  
GGCGCATGAAACTTCAGAACATGGTCAAATCCCCTTGACTGGCCTGGACATGACACCTCACGTGGTTAA  
GAGGAGCCAGAGCAGCTGGAGTTTGCCATCGCATTGGTCCCCTGGAGACGGCCCTATGGACTCGGAGG  
GACCCTGAGGACTACATCTATGACCTGTATGCTGTGTGCAATCACCATGGCACCATGCAAGGGGGCACT  
ACACAGCGTACTGTAAGAACTCTGTGGACGGCCTCTGGTACTGCTTCGATGACAGCGATGTGCAGCAGCT  
GTCAGAAGATGAGGTCTGCACGCAGACAGCATAACCTCTTCTACCAGAGGCGGACAGCCATCCCCTCA  
TGGTCAGCCAACAGCTCGGTGGCAGGCTCCACAAGTTCTTCCCTGTGTGAACACTGGGTGAGCCGGCTCC  
CGGGCAGCAAGCCAGCCAGCGTGACCTCTGCAGCTTCTCCAGACGCACCTCCCTGGCGTCGCTCTCTGA  
GTCCGTGGAGATGACTGGAGAAAGGAGTGAAGATGATGGAGGCTTTTCAACTCGACCATTGTGAGAAGT  
GTCCAGCGTCAGAGTTTGTATCCAGATCTTCTGTACCAGCCCCTTGGCCGTCAATGAAAATTGCATGA  
GACCTTATGGTCCCTGTCTGCTAAGCTGCAGATGCGCTCCAATTCTCCATCCCATTTCAGGGGATTC  
GCCAATTCACAGCTCTGCTTCCACCTTGAGAGAAGATTGGGGAGGACAGATGACAAGGTCTCCATCTCT  
TGCTTTGGTAGCTTGCGGAACCTTTCTAGCAGTTACCAGGAACCAAGCGACAGTCATAGTCGCCGTGAGC  
ACAAGGCTGTGGGCCGGGCCCTCTGGCTGTATGGAAGGCGTGTCAAAGACGAATCGGACACCCCGCAG  
ATTGAACTCCAGTGTCTAGATACACAGAGCAAACATTAGCACAAGGGGACCGCCTGCCCCGCTCTCT  
GGTCCATTTGATAACAATAATCAGATCGCTTATGTGGATCAGAGCGACTCCGTAGACAGCTCTCCAGTCA  
AAGAGGTGAAAGCCCCAGCCACCCAGGCTCACTCGCAAAGAAACCAGAGAGCACAATAAGAGATCCCC  
CAGTTCCAAAGGCACTTCTGAGCCAGAGAAAAGCTTGGGAAGGGGAGACCAGCCTTGGCAAGCAGGAG  
TCATCCCTTTCAAGTACATCCCCTTCTTCTCTTCTTCTGTAAGTCTCTCTAAAGCCCTCCCGCTCCC  
GCAGCAAAGCAGATTCTTCTCCAGGGGAGTGACGGCATTATCCCCTGCCCTGCCAACCCAAAAA  
GGAGTCATCCCCGAAATCTCAGGACTCCGTGTCATCTCCTTCGCCACAGAAGCAGAAGTCAGCCTCGGCC  
CTCACCTACACTGCTTCTCCACATCTGCCAAAAAGGCCTCGGGCCCTGCCACAAGGAGCCCTTTCCAC  
CTGGGAAGAGCAGGACTTCAGACCACAGCTTGTAGAGAGGGCTCCAGACAAAGCTTGGGTTCTGACAG  
AGCCAGCGCCACCTCCACCTCCAAACCAATTCCCCTCGGGTGGCCAGGCCCGAGCAGGGGAGGGCAGG  
GGGGCCGGGAAGCAGTGGGAGCTCTCCATGGCCAGCCTGCGCTCCCCAGCACAAGCATCAAGTCTG  
GTTTGAAGAGGGACAGCAAGTCTGAGGACAAGGGGCTGTCCTTCTCAAATCAGCCTTGAGACAGAAGGA  
AACCCGGCGCTCGACGGATCTTGCAAGACAGCCTTGCTCTCTAAAAGGCTGGTGGGAGCTCTGTTAAG  
TCTGTCTGTAAGAACACCGGGGACGACGAGGACAGAGAGGCCACCAGCCTCCAGCTTCCAGCAGCCAA  
ATGCAATACAACGGGAAAAGAGCAGCTTGTACCAAGGACCCTGCTTCTGCCAAACATTCCCTGTGTG  
CGCTCGAAAATCCAAGTCTTCCAACTAGACTCTGGAGTTCCTCGTCTCCGGGTGGCAGGACGTGCA  
GAGAAATCCTCAAAAAGTTATCTTAGCATGCAAACTCTGCACGGCCTTCTCAAAAACCTCAG

ACGCGTACGCGGCCGCTCGAGCAGAACTCATCTCAGAAGAGGATCTGGCAGCAATGATATCCTGGATT  
ACAAGGATGACGACGATAAGGTTTAA

**Protein Sequence:** >RC215820 representing NM\_020718  
Red=Cloning site Green=Tags(s)

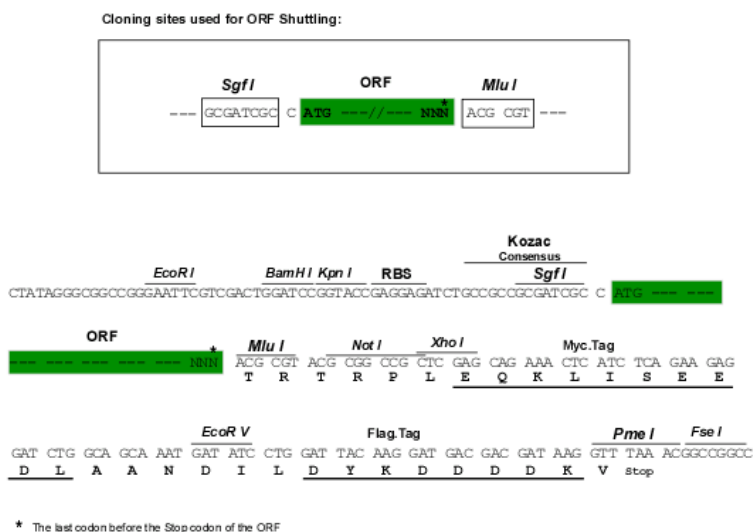
```
MSKVTAPGSGPPAAASGKEKRSFSKRLFRSGRAGGGGAGGPGASGPAAPSSPSSARSVGSFMSRVLK
TLSTLSHLSSGAAPDRGGLRSCFPFGPAAAPTPPPCPPPASPAPPACAAEPVPGVAGLRNHGNTCFMN
ATLQCLSNTELF AEYLALGOYRAGRPEPSDPDEQPAGRGAQGQGEVTEQLAHLVRALWLTLEYTPQHSRDF
KTIVSKNALQYRGN SQHDAQEFLLWLLDRVHEDLNHSVKQSGQPPLKPPSETDMMPEGSPFPVCSTFVQE
LFQAQYRSSLTCPHCQKQSNFTDFPFLCISLPIPLPHTRPLYVTVVYQKCSHCMRIGVAVPLSGTVARLR
EAVSMETKIPTDQIVLTEMYYDGFHRSCD TDDLETVHESDCIFAFETPEIFRPEGILSQRGIHLN NNLN
HLKFGLDYHRLSSPTQTAAKQGKMSPTS RAGSDKIVLLVCNRACTGQQGKRFGLPFVLHLEKTIAWDLL
QKEIILEKMKYFLRPTVCIQVCPFSLRVVS VVGITYLLPQEEQPLCHPIVERALKSCGPGGTAHVKL VVEW
DKETRDFLFVNTED EYIPDAESVRLQRERHHQPQTCTLSQCFQLYTK EERLAPDDAWRCPCHKQLQQGSI
TLSLWTL PDVLI IHLKRFRQEGDRRMKLQNMVKFPLTGLDMTPHVVKRSQSSWSLPSHSPWRRPYGLGR
DPEDYIYDLYAVCNH HGTMOGGHYTAYCKNSVDGLWYCFDSDVQQLSEDEVCTQTAYILFYQRRTAIPS
WSANSSVAGSTSSSLCEHWVSRLPGSKPASVTS AASSRRTSLASLSESVEMTGERSEDDGGFSTRPFVRS
VQRQSLSSRSSVTSPLAVNENCMRPSWSLS AKLQMRSNPSRFSGDSPIHSSASTLEKIGEAAADKVISI
CFGSLRNLS SSSYQEPSDSHSRREHKAVGRAPLAVMEGVFKDESDTRRLNSSVVDTQSKHSAQGDRLPPLS
GPFDNNNQIAYVDQSDSVDSSPVKEVKAPSHPGSLAKKPESTTKRSPSSKGTSEPEKSLRKGRPALASQE
SSLSTSPSSPLPVKVS LKPSRSRSKADSSSRGSGRHSSPAPAQPKKES SPKSQDSVSSPSPQKQSASA
LTYTASSTSAKKASGPATRSFPFP GKSRSDHSLSREGSRQSLGSDRASATSTSKPNSPRV SQARAGEGR
GAGKHVRSSSMASLRSPSTSIKSLGRD SKSEDKGLSFFKSALRQKETRRSTDLGKTALLSKKAGSSVK
SVCKNTGDDEAERGHQPASQQPNANTTGKEQLVTKDPASAKHSLLSARKSKSSQLDSGVPSSP GGRQSA
EKSSKKLSSSMQTSARPSQKPKQ
```

TRTRPLEQKLISEEDLAANDILDYKDDDDKV

**Restriction Sites:**

SgfI-MluI

**Cloning Scheme:**

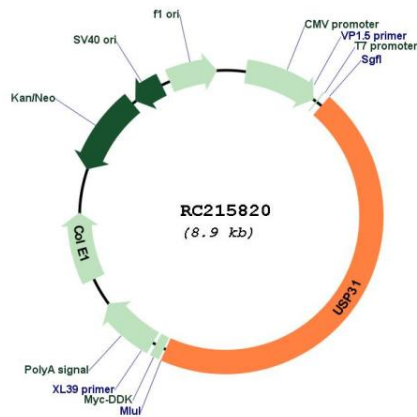


**ACCN:** NM\_020718

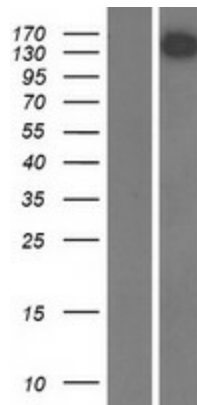
**ORF Size:** 4056 bp

<b>OTI Disclaimer:</b>	<p>Due to the inherent nature of this plasmid, standard methods to replicate additional amounts of DNA in E. coli are highly likely to result in mutations and/or rearrangements. Therefore, OriGene does not guarantee the capability to replicate this plasmid DNA. Additional amounts of DNA can be purchased from OriGene with batch-specific, full-sequence verification at a reduced cost. Please contact our customer care team at <a href="mailto:custsupport@origene.com">custsupport@origene.com</a> or by calling 301.340.3188 option 3 for pricing and delivery.</p> <p>The molecular sequence of this clone aligns with the gene accession number as a point of reference only. However, individual transcript sequences of the same gene can differ through naturally occurring variations (e.g. polymorphisms), each with its own valid existence. This clone is substantially in agreement with the reference, but a complete review of all prevailing variants is recommended prior to use. <a href="#">More info</a></p>
<b>OTI Annotation:</b>	<p>This clone was engineered to express the complete ORF with an expression tag. Expression varies depending on the nature of the gene.</p>
<b>Components:</b>	<p>The ORF clone is ion-exchange column purified and shipped in a 2D barcoded Matrix tube containing 10ug of transfection-ready, dried plasmid DNA (reconstitute with 100 ul of water).</p>
<b>Reconstitution Method:</b>	<ol style="list-style-type: none"><li>1. Centrifuge at 5,000xg for 5min.</li><li>2. Carefully open the tube and add 100ul of sterile water to dissolve the DNA.</li><li>3. Close the tube and incubate for 10 minutes at room temperature.</li><li>4. Briefly vortex the tube and then do a quick spin (less than 5000xg) to concentrate the liquid at the bottom.</li><li>5. Store the suspended plasmid at -20°C. The DNA is stable for at least one year from date of shipping when stored at -20°C.</li></ol>
<b>RefSeq:</b>	<p><a href="#">NM_020718.3</a>, <a href="#">NP_065769.3</a></p>
<b>RefSeq Size:</b>	<p>10698 bp</p>
<b>RefSeq ORF:</b>	<p>4059 bp</p>
<b>Locus ID:</b>	<p>57478</p>
<b>UniProt ID:</b>	<p><a href="#">Q70CQ4</a></p>
<b>Cytogenetics:</b>	<p>16p12.2</p>
<b>Protein Families:</b>	<p>Druggable Genome, Protease</p>
<b>MW:</b>	<p>146.5 kDa</p>
<b>Gene Summary:</b>	<p>May recognize and hydrolyze the peptide bond at the C-terminal Gly of ubiquitin. Involved in the processing of poly-ubiquitin precursors as well as that of ubiquitinated proteins (By similarity).[UniProtKB/Swiss-Prot Function]</p>

Product images:



Circular map for RC215820



Western blot validation of overexpression lysate (Cat# [LY412348]) using anti-DDK antibody (Cat# [TA50011-100]). Left: Cell lysates from untransfected HEK293T cells; Right: Cell lysates from HEK293T cells transfected with RC215820 using transfection reagent MegaTran 2.0 (Cat# [TT210002]).