

## Product datasheet for **RC215818**

### SLC37A3 (NM\_032295) Human Tagged ORF Clone

#### Product data:

Product Type:	Expression Plasmids
Product Name:	SLC37A3 (NM_032295) Human Tagged ORF Clone
Tag:	Myc-DDK
Symbol:	SLC37A3
Mammalian Cell Selection:	Neomycin
Vector:	pCMV6-Entry (PS100001)
E. coli Selection:	Kanamycin (25 ug/mL)
ORF Nucleotide Sequence:	>RC215818 representing NM_032295 Red=Cloning site Blue=ORF Green=Tags(s)

TTTTGTAATACGACTCACTATAGGGCGGCCGGAATTCGTCGACTGGATCCGGTACCGAGGAGATCTGCC  
GCC**CGATCGCC**

ATGGCCTGGCCAAATGTTTTCAAAGAGGGTCTCTGCTGTCCCAGTTCAGCCATCATCATGTTGTAGTGT  
TCCTGCTCACTTTCTTCAGTTATTCGTTGCTCCATGCTTCACGAAAAACATTTAGCAATGTCAAAGTCAG  
TATCTCTGAGCAGTGGACCCCAAGTGCTTTAACACGTCAGTTGAGCTGCCTGTGGAGATCTGGAGCAGC  
AACCATTTGTTCCCGCAGTGCAGAGAAAGCGACTCTTTCCCTCGGCACACTGGATAACCATTTTCCTCTTCT  
CCTATGCTGTGGGCCTATTCATCAGTGGCATCGTTGGGGATCGTTGAATTTGCGATGGTCTGTCTTT  
TGGCATGTGCTCTTCTGCATTAGTGGTGTGTTGCTTTGGTGCGCTCACAGAATGGCTGCGTTTCTACAAC  
AAATGGCTGTA CTGCTGCCTGTGGATTGTGAACGGCCTGCTGCAGTCCACTGGTTGGCCCTGTGTGGTTG  
CTGTTATGGGCAACTGGTTGGGAAAGCCGGACGAGGAGTTGTTTTGGTCTCTGGAGTGCCTGTGCTTC  
GGTGGGCAACATTTGGGAGCGTGCCTAGCTTCTTCTGTTCTTCAGTATGGTTATGAGTATGCCTTTCTG  
GTGACGGCGTCTGTGCAGTTTGTGGTGGGATCGTTATCTTCTTTGGACTCCTGGTGTACCAGAAGAAA  
TTGGTCTCTCGGGTATTGAGGCAGAAGAAAACCTTGAAGAAGACTCACACAGGCCATTAATTAATGGTGG  
TGAAAATGAAGACGAATATGAGCCGAATTATTCAATCCAAGATGATAGTTCTGTTGCCAAGTCAAGGCC  
ATAAGCTTCTACCAGGCATGTTGCCTTCTGGAGTACATACCGTACTCACTGGCCTACGCCTGCTTGAAGT  
TAGTGAATTACTCTTCTTCTCTGCTCCCTTTTATCTGAGTAACAACCTTCGGCTGGAAGGAGGCCGA  
AGCCGACAAGCTGTCCATTTGGTACGACGTTGGAGGGATCATAGTATTTAGTGTCTCTGATCCGGGACAA  
GCTAGGATGGATGGGTTTTCTACTTTTTCTATCTCATGACAAGTTGTACAATTGTGTTTATCTCGCCA  
TTAATAGTGAGGGAAATATTCTCTCTCGTCTAAGGAGACAGGCTCACATATTGAGGGAGTGACCGGTGC  
CCGCGAGACAGAAAGAACAATGTCAGCCACATCAGGACCCTGGGGCTTCGAGTCTGCCCTAATTTGGGT  
TTGTCTAGGAGCTCCAGCCTGATCTTGGATTGTGACGGCTCTCTCAACTGCCAGCCACCTGAGATGC

**ACGCGT**ACGCGGCCGCTCGAGCAGAACTCATCTCAGAAGAGGATCTGGCAGCAAATGATATCTGGATT  
ACAAGGATGACGACGATAAGGTTTAA



[View online >](#)

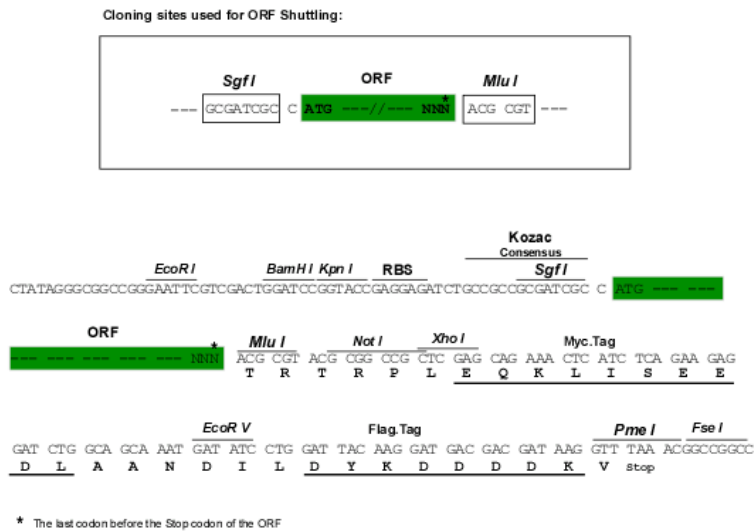
**Protein Sequence:** >RC215818 representing NM\_032295  
 Red=Cloning site Green=Tags(s)

MAWPNVFQRGSLLSQFSHHHVVVFLLTFFSYSLLHASRKTFSSNVKVSISEQWTPSAFNSTVELPVEIWSS  
 NHLFPSSAEKATLFLGTLDTIFLFSYAVGLFISGIVGDRNLNRWVLSFGMCSSALVVFVFGALTEWLRFYN  
 KWLYCCLWIVNGLLQSTGWPCVVAVMGNWFGKAGRGVVFGLWSACASVGNILGACCLASSVLQYGYEYAF  
 VTASVQFAGGIVIFFGLLVSPPEEIGLSGIEAEENFEEDSHRPLINGGENEDEYEPNYSIQDSSVAQVKA  
 ISFYQACCLPGVIPYSLAYACLKLVNYSFFFWLPFYLSNNFGWKEAEADKLSIWYDVGGIIVFSVSDPGQ  
 ARMDVGFLLFHS HDKLYNCVYLAINSEGNILSRAKETGSHIEGVTGARETERTMSATSGPLGLRVCPLNG  
 LSRSSSLILDQASLNTASHLRC

TRTRPLEQKLISEEDLAANDILDYKDDDDKV

**Restriction Sites:** SgfI-MluI

**Cloning Scheme:**



**ACCN:** NM\_032295

**ORF Size:** 1329 bp

**OTI Disclaimer:** The molecular sequence of this clone aligns with the gene accession number as a point of reference only. However, individual transcript sequences of the same gene can differ through naturally occurring variations (e.g. polymorphisms), each with its own valid existence. This clone is substantially in agreement with the reference, but a complete review of all prevailing variants is recommended prior to use. [More info](#)

**OTI Annotation:** This clone was engineered to express the complete ORF with an expression tag. Expression varies depending on the nature of the gene.

**Components:** The ORF clone is ion-exchange column purified and shipped in a 2D barcoded Matrix tube containing 10ug of transfection-ready, dried plasmid DNA (reconstitute with 100 ul of water).

**Reconstitution Method:**

1. Centrifuge at 5,000xg for 5min.
2. Carefully open the tube and add 100ul of sterile water to dissolve the DNA.
3. Close the tube and incubate for 10 minutes at room temperature.
4. Briefly vortex the tube and then do a quick spin (less than 5000xg) to concentrate the liquid at the bottom.
5. Store the suspended plasmid at -20°C. The DNA is stable for at least one year from date of shipping when stored at -20°C.

**RefSeq:** [NM\\_032295.3](#)

**RefSeq Size:** 3033 bp

**RefSeq ORF:** 1332 bp

**Locus ID:** 84255

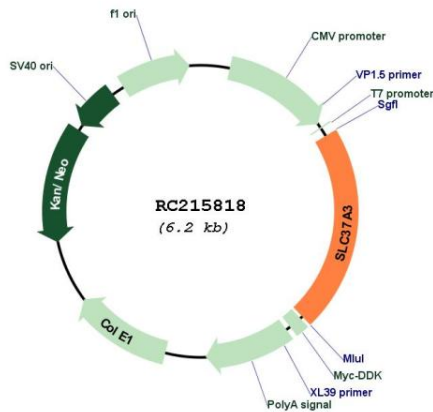
**UniProt ID:** [Q8NCC5](#)

**Cytogenetics:** 7q34

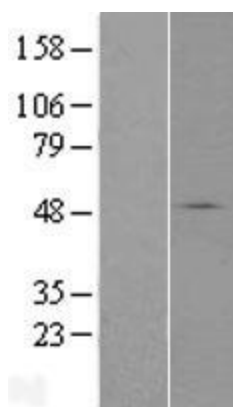
**Protein Families:** Transmembrane

**MW:** 49.4 kDa

**Product images:**



Circular map for RC215818



Western blot validation of overexpression lysate (Cat# [LY410238]) using anti-DDK antibody (Cat# [TA50011-100]). Left: Cell lysates from untransfected HEK293T cells; Right: Cell lysates from HEK293T cells transfected with RC215818 using transfection reagent MegaTran 2.0 (Cat# [TT210002]).