

Product datasheet for **RC215816**

FABP9 (NM_001080526) Human Tagged ORF Clone

Product data:

Product Type: Expression Plasmids
Product Name: FABP9 (NM_001080526) Human Tagged ORF Clone
Tag: Myc-DDK
Symbol: FABP9
Synonyms: PERF; PERF15; T-FABP; TLBP
Mammalian Cell Selection: Neomycin
Vector: pCMV6-Entry (PS100001)
E. coli Selection: Kanamycin (25 ug/mL)
ORF Nucleotide Sequence: >RC215816 representing NM_001080526
Red=Cloning site Blue=ORF Green=Tags(s)

TTTTGTAATACGACTCACTATAGGGCGGCCGGAATTCGTCGACTGGATCCGGTACCGAGGAGATCTGCC
GCC**CGATCGCC**

ATGGTTGAGCCCTTCTTGGGAACCTGGAAGCTGGTCTCCAGTGAAAACCTTGAGGATTACATGAAAGAAC
TGGGAGTGAATTCGCAGCCCGAACATGGCAGGGTTAGTGAACCGACAGTAACATTAGTGTGATGG
GAAAATGATGACCATAAGAACAGAAAGTCTTTCCAGGACACTAAGATCTCCTTCAAGCTGGGGGAAGAA
TTTGATGAAACTACAGCAGACAACCGGAAAGTAAAGAGCACCATAACATTAGAGAATGGCTCAATGATTC
ACGTCCAAAAATGGCTTGCAAAGAGACAACAATCAAAAGAAAAATTGTGGATGAAAAAATGGTAGTGGA
ATGTAATAATATTGTCAGCACCAGAATCTACGAAAAGGTG

ACGCGTACGCGGCCGCTCGAGCAGAAAACCTCATCTCAGAAGAGGATCTGGCAGCAAATGATATCCTGGATT
ACAAGGATGACGACGATAAGGTTTAA

Protein Sequence: >RC215816 representing NM_001080526
Red=Cloning site Green=Tags(s)
MVEPFLGTWKLVSSENFEDYMKELGVNFAARNMAGLVKPTVTISVDGKMMTIRTESSFDTKISFKLGEE
FDETTADNRKVKSTITLENGSMIHVQKWLKETTIRKIVDEKMOVVECKMNNIVSTRIYEV

TRTRPLEQKLISEEDLAANDILDYKDDDDKV

Chromatograms: https://cdn.origene.com/chromatograms/mk8028_e01.zip

Restriction Sites: Sgfl-MluI

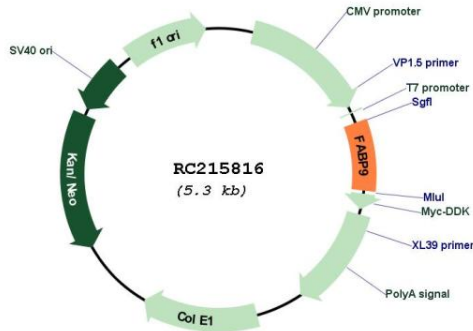


[View online »](#)

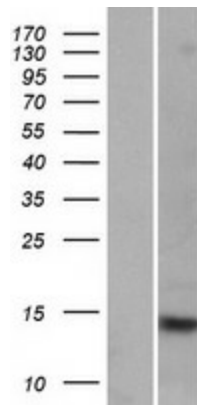
Cytogenetics: 8q21.13

MW: 14.9 kDa

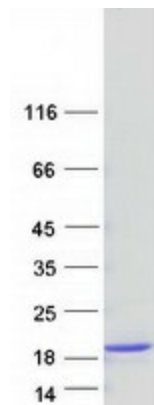
Product images:



Circular map for RC215816



Western blot validation of overexpression lysate (Cat# [LY421081]) using anti-DDK antibody (Cat# [TA50011-100]). Left: Cell lysates from untransfected HEK293T cells; Right: Cell lysates from HEK293T cells transfected with RC215816 using transfection reagent MegaTran 2.0 (Cat# [TT210002]).



Coomassie blue staining of purified FABP9 protein (Cat# [TP315816]). The protein was produced from HEK293T cells transfected with FABP9 cDNA clone (Cat# RC215816) using MegaTran 2.0 (Cat# [TT210002]).