

Product datasheet for **RC215812**

PRAMEF8 (NM_001012276) Human Tagged ORF Clone

Product data:

Product Type:	Expression Plasmids
Product Name:	PRAMEF8 (NM_001012276) Human Tagged ORF Clone
Tag:	Myc-DDK
Symbol:	PRAMEF8
Synonyms:	PRAMEF24
Mammalian Cell Selection:	Neomycin
Vector:	pCMV6-Entry (PS100001)
E. coli Selection:	Kanamycin (25 ug/mL)



[View online »](#)

ORF Nucleotide Sequence:

>RC215812 representing NM_001012276
 Red=Cloning site Blue=ORF Green=Tags(s)

TTTTGTAATACGACTCACTATAGGGCGGCCGGAATTCGTCGACTGGATCCGGTACCGAGGAGATCTGCC
 GCC**CGGATCGCC**

ATGAGCATCAGGGCCCCACCCAGACTCCTGGAGCTGGCAAGGCAGAGGCTGCTGAGGGACCAGGCCTTGG
 CCATCTCCACCATGGAGGAGCTGCCAGGGAGCTTCCCCACACTGTTTCATGGAGGCCTTCAGCAGGAG
 ACGCTGTGAAACCTGAAAACAATGGTGCAGGCCTGGCCTTTCACCCGCCTCCCTCTAGGGTCCCTGATG
 AAGTCGCCTCATCTGGAGTCATTAATACTGTGCTGGAAGGGTTGATGTGCTGTTGACCAAGAGGTTT
 GCCCAGGCAGTCAAACTTCAAGTGTGGACTTGAGGAATGTGGATGAGAACTTCTGCGACATATTTTC
 TGGAGCTACTGCATCCTCCCGGAGGCTCTGAGTCAGAAGCAAACAGCAGATAACTGTCCAGGGACAGGC
 AGGCAGCAGCCATTCATGGTGTTCATAGACCTTGTCTCAAGAACAGGACACTAGATGAATGCCTCACCC
 ACCTCTTAGAGTGGGCAAGCAGAGAAAAGGCTTACTGCATGTGTGTTGCCAGGAGCTGCAGTTTTTGG
 AATGCCATCCACAGTATCATAGAGTCTGAACATGGTGGAGCTTGACTGTATCCAGGAGTGGAAGTG
 TGCTGCCCTGGGAGCTGTCCACTTGTGAAGTTTGCCCTTACCTGGGCCAGATGAGGAATCTCCGCA
 AACTTGTCTCTTCAACATCCGTGCATCTGCCTGCATTCCCCAGACAACAAGGGGCAGTTCATTGCCCG
 ATTCACCTCTCAGTTCCTCAAGCTGGACTATTTCCAGAATCTGTCTATGCACTCCGTCTCTTTCTCGAA
 GGCCACCTGGACCAGTGTCTCAGGTGTCTCCAGGCCTCCTGGAGATGGTCGTTATGACCGACTGCCTGC
 TGTGAGTGGACTTGAAGCATCTCTTGGTGGCCGAGCATCCGTCAATTAAGGAGCTGGACCTGAG
 GGGTGTACACTGACCCATTTACGCCCTGAGCCCTCACAGTCTGTGGAGCAAGTTGTGGCCACCCTG
 CAGACCCTGGACTTAGAGGACTGTGGGATCATGGATCCCAACTCAGCGCCATCTGCCTGTCTGAGCC
 GCTGCTCCAGCTCAGCACCTTCACTTCTGTGGGAACCTCATCTCCATGGCTGCCCTTGAGAACCTGCT
 CGGCCACACCGTGGGCTGAGCAAGCTAAGCCTGGAGCTGTATCCTGCCCTCTGGAGAGTTATGACACC
 CAGGGTGTCTCTGCTGGGGGAGATTTGCTGAACCTGGGCTGAGCTGATGAAGACTGAGGGACTTAA
 GGCAGCCCAAGATCATTGTGTTCTGCACCGTCCCTGCCCTCGCTGTGGCATCAGGGCCTCTATGACCT
 GGAGCCAGTCACTGCCTCTGT

**ACGGTACGCGGCCGCTCGAGCAGAACTCATCTCAGAAGAGGATCTGGCAGCAATGATATCTGGATT
 ACAAGGATGACGACGATAAGGTTTAA**

Protein Sequence:

>RC215812 representing NM_001012276
 Red=Cloning site Green=Tags(s)

MSIRAPPRLLELARQRLLRDQALAIISTMEELPRELFPTLFMEAFSRRRCETLKTMTVQAWPFTRLPLGLSM
 KSPHLESLSVLEGVLDVLLTQEVRRPQSKLQVLDLRNVDFNFCDFSGATASFPEALSQKQTADNCPGTG
 RQPPFMVFIDLCLKNRTLDECLTHLLEWQKQRKGLLHVCCQELQVFGMPIHSIIIEVLNMVELDCIQEVEV
 CCPWELSTLVKFAPYLGQMRNLRKLVLFNIRASACIPPDNKGQFIARFTSQFLKLDYFQNLMSHSVSFLE
 GHLDQLLRCLQASLEMVMTDCLLSESDLKHLWCPSIRQLKELDLRGVTLTHFSPEPLTGLLEQVVATL
 QTLDEDCGIMDSQLSAILPVLSRCSQLSTFSFCGNLISMAALENLLRHTVGLSKLSLELYPAPLESYDT
 QGALCWGRFAELGAELMKTLRDLRQPKIIVFCTVPCPRCGIRASYDLEPSHCLC

TRTRPLEQKLISEEDLAANDILDYKDDDDKV

Chromatograms:

https://cdn.origene.com/chromatograms/ja1406_a07.zip

Restriction Sites:

Sgfl-MluI

Cloning Scheme:

Cloning sites used for ORF Shutting:


ACCN: NM_001012276

ORF Size: 1422 bp

OTI Disclaimer: The molecular sequence of this clone aligns with the gene accession number as a point of reference only. However, individual transcript sequences of the same gene can differ through naturally occurring variations (e.g. polymorphisms), each with its own valid existence. This clone is substantially in agreement with the reference, but a complete review of all prevailing variants is recommended prior to use. [More info](#)

OTI Annotation: This clone was engineered to express the complete ORF with an expression tag. Expression varies depending on the nature of the gene.

Components: The ORF clone is ion-exchange column purified and shipped in a 2D barcoded Matrix tube containing 10ug of transfection-ready, dried plasmid DNA (reconstitute with 100 ul of water).

Reconstitution Method:

1. Centrifuge at 5,000xg for 5min.
2. Carefully open the tube and add 100ul of sterile water to dissolve the DNA.
3. Close the tube and incubate for 10 minutes at room temperature.
4. Briefly vortex the tube and then do a quick spin (less than 5000xg) to concentrate the liquid at the bottom.
5. Store the suspended plasmid at -20°C. The DNA is stable for at least one year from date of shipping when stored at -20°C.

RefSeq: [NM_001012276.2](#)
RefSeq Size: 1844 bp

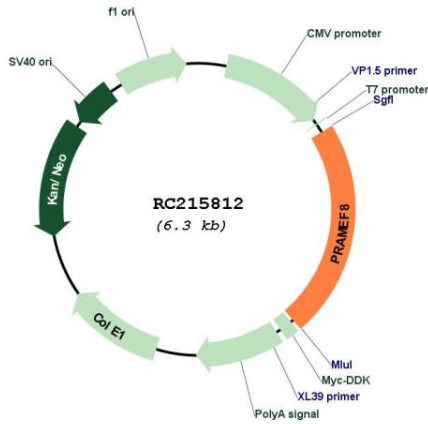
RefSeq ORF: 1425 bp

Locus ID: 391002

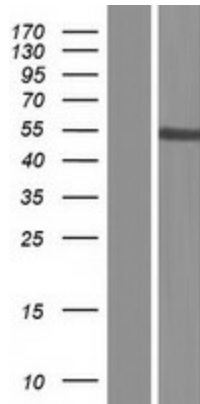
UniProt ID: [Q5VWM4](#)
Cytogenetics: 1p36.21

MW: 53.5 kDa

Product images:



Circular map for RC215812



Western blot validation of overexpression lysate (Cat# [LY423316]) using anti-DDK antibody (Cat# [TA50011-100]). Left: Cell lysates from untransfected HEK293T cells; Right: Cell lysates from HEK293T cells transfected with RC215812 using transfection reagent MegaTran 2.0 (Cat# [TT210002]).