

Product datasheet for **RC215810L4V**

SLC6A20 (NM_022405) Human Tagged ORF Clone Lentiviral Particle

Product data:

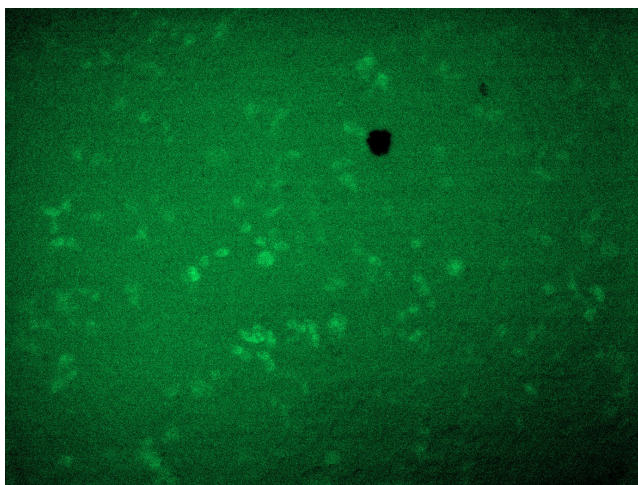
Product Type:	Lentiviral Particles
Product Name:	SLC6A20 (NM_022405) Human Tagged ORF Clone Lentiviral Particle
Symbol:	SLC6A20
Synonyms:	IMINO; SIT1; XT3; Xtrp3
Mammalian Cell Selection:	Puromycin
Vector:	pLenti-C-mGFP-P2A-Puro (PS100093)
Tag:	mGFP
ACCN:	NM_022405
ORF Size:	1665 bp
ORF Nucleotide Sequence:	The ORF insert of this clone is exactly the same as(RC215810).
OTI Disclaimer:	The molecular sequence of this clone aligns with the gene accession number as a point of reference only. However, individual transcript sequences of the same gene can differ through naturally occurring variations (e.g. polymorphisms), each with its own valid existence. This clone is substantially in agreement with the reference, but a complete review of all prevailing variants is recommended prior to use. More info
OTI Annotation:	This clone was engineered to express the complete ORF with an expression tag. Expression varies depending on the nature of the gene.
RefSeq:	NM_022405.2
RefSeq Size:	5239 bp
RefSeq ORF:	1668 bp
Locus ID:	54716
UniProt ID:	Q9NP91
Cytogenetics:	3p21.31
Protein Families:	Druggable Genome, Transmembrane
MW:	61.6 kDa



[View online »](#)

Gene Summary:

Transport of small hydrophilic substances across cell membranes is mediated by substrate-specific transporter proteins which have been classified into several families of related genes. The protein encoded by this gene belongs to the sodium:neurotransmitter symporter (SNF) family and functions as a proline transporter expressed in kidney and small intestine. Mutations in this gene are associated with Hyperglycinuria and Iminoglycinuria. [provided by RefSeq, Jul 2020]

Product images:

[RC215810L4] was used to prepare Lentiviral particles using [TR30037] packaging kit. HEK293T cells were transduced with RC215810L4V particle to overexpress human SLC6A20-mGFP fusion protein.