

Product datasheet for RC215810L4

SLC6A20 (NM_022405) Human Tagged Lenti ORF Clone

Product data:

Product Type:	Expression Plasmids
Product Name:	SLC6A20 (NM_022405) Human Tagged Lenti ORF Clone
Tag:	mGFP
Symbol:	SLC6A20
Synonyms:	IMINO; SIT1; XT3; Xtrp3
Mammalian Cell Selection:	Puromycin
Vector:	pLenti-C-mGFP-P2A-Puro (PS100093)
E. coli Selection:	Chloramphenicol (34 ug/mL)
ORF Nucleotide Sequence:	The ORF insert of this clone is exactly the same as(RC215810).
Restriction Sites:	SgfI-MluI
Cloning Scheme:	

Cloning sites used for ORF Shuttling:



* The last codon before the Stop codon of the ORF.

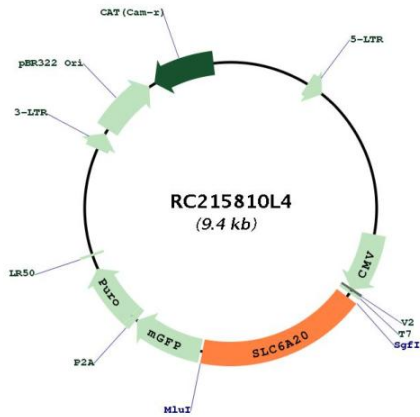
ACCN:	NM_022405
ORF Size:	1665 bp



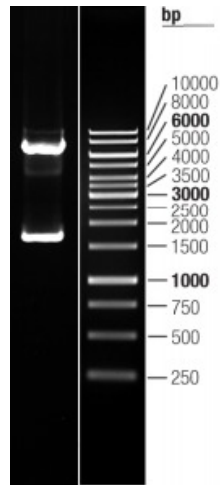
[View online »](#)

OTI Disclaimer:	The molecular sequence of this clone aligns with the gene accession number as a point of reference only. However, individual transcript sequences of the same gene can differ through naturally occurring variations (e.g. polymorphisms), each with its own valid existence. This clone is substantially in agreement with the reference, but a complete review of all prevailing variants is recommended prior to use. More info
OTI Annotation:	This clone was engineered to express the complete ORF with an expression tag. Expression varies depending on the nature of the gene.
Components:	The ORF clone is ion-exchange column purified and shipped in a 2D barcoded Matrix tube containing 10ug of transfection-ready, dried plasmid DNA (reconstitute with 100 ul of water).
Reconstitution Method:	<ol style="list-style-type: none">1. Centrifuge at 5,000xg for 5min.2. Carefully open the tube and add 100ul of sterile water to dissolve the DNA.3. Close the tube and incubate for 10 minutes at room temperature.4. Briefly vortex the tube and then do a quick spin (less than 5000xg) to concentrate the liquid at the bottom.5. Store the suspended plasmid at -20°C. The DNA is stable for at least one year from date of shipping when stored at -20°C.
RefSeq:	NM_022405.2
RefSeq Size:	5239 bp
RefSeq ORF:	1668 bp
Locus ID:	54716
UniProt ID:	Q9NP91
Cytogenetics:	3p21.31
Protein Families:	Druggable Genome, Transmembrane
MW:	61.6 kDa
Gene Summary:	Transport of small hydrophilic substances across cell membranes is mediated by substrate-specific transporter proteins which have been classified into several families of related genes. The protein encoded by this gene belongs to the sodium:neurotransmitter symporter (SNF) family and functions as a proline transporter expressed in kidney and small intestine. Mutations in this gene are associated with Hyperglycinuria and Iminoglycinuria. [provided by RefSeq, Jul 2020]

Product images:



Circular map for RC215810L4



Double digestion of RC215810L4 using SgfI and MluI