

## Product datasheet for RC215806

### SH3GL2 (NM\_003026) Human Tagged ORF Clone

#### Product data:

Product Type:	Expression Plasmids
Product Name:	SH3GL2 (NM_003026) Human Tagged ORF Clone
Tag:	Myc-DDK
Symbol:	SH3GL2
Synonyms:	CNSA2; EEN-B1; SH3D2A; SH3P4
Mammalian Cell Selection:	Neomycin
Vector:	pCMV6-Entry (PS100001)
E. coli Selection:	Kanamycin (25 ug/mL)
ORF Nucleotide Sequence:	>RC215806 representing NM_003026 Red=Cloning site Blue=ORF Green=Tags(s)

TTTTGTAATACGACTCACTATAGGGCGCCGGGAATTCGTCGACTGGATCCGGTACCGAGGAGATCTGCC  
GCC**CGATCGCC**

ATGTCGGTGGCCGGCCTCAAGAAGCAGTTCATAAAGCCACTCAGAAAGTGAGTGAGAAGGTTGGAGGAG  
CTGAAGGAACCAAGCTAGATGATGACTTCAAAGAGATGAAAGGAAAAGTGGATGTCACCAGCAGGGCTGT  
GATGGAATAATGACTAAAACAATTGAATACCTTCAACCAATCCAGCTTCCAGAGCTAAGCTCAGCATG  
ATCAACACCATGTCAAAAATCCGTGGCCAGGAGAAGGGCCAGGCTATCCTCAGGCAGAGGCGCTGCTGG  
CAGAGGCCATGCTCAAATTTGGAAGAGAGCTTGGAGATGATTGCAACTTTGGCCAGCAGCTTGGTGAGGT  
CGGGGAGGCCATGCGGGAAGTGTGCGGAGGTCAAAGACTCTTTGGACATAGAAGTGAAGCAGAACTTCATT  
GACCTCTTCAGAATCTTCATGACAAAAGATCTTAGGGAAATTCACATCATCTAAAGAAGTTGGAGGGTC  
GACGCCTGGATTTTGATTATAAGAAGAAACGACAAGGCAAGATTCGGATGAAGAGCTTCGTCAAGCTCT  
AGAGAAATTTGATGAGTCTAAGGAAATGCTGAGTCAAGCATGTTCAATCTCTTGGAGATGGATATTGAA  
CAAGTGAGCCAGCTCTGCACTTGTGCAAGCTCAGCTGGAGTACCACAAGCAGGCAGTCCAGATCCTGC  
AGCAAGTCACGGTCAGACTGGAAGAAAGAATAAGACAGGCTTCATCTCAGCCTAGAAGGGAATATCAACC  
TAAACCACGAATGAGCCTGGAGTTTCCAAGTGGAGACAGTACTCAGCCCAATGGGGTCTCTCCACACA  
GGCACTCCAAACCTTCAGGTGTCAAAATGGATCAGCCCTGCTGCCGAGCTCTGTACGACTTTGAACCTG  
AAAATGAAGGGGAGTTGGGATTTAAAGAGGGCGATATCATCACACTCAACCAATGATGAGAACTG  
GTATGAGGGGATGCTGCATGGCCATTAGGCTTCTCCCATCAATTATGTGAAATTCTGGTTGCCCTG  
CCCAT

**ACGCGT**ACGCGGCCGCTCGAGCAGAACTCATCTCAGAAGAGGATCTGGCAGCAATGATATCCTGGATT  
ACAAGGATGACGACGATAAGGTTTAA



[View online »](#)

**Protein Sequence:** >RC215806 representing NM\_003026  
Red=Cloning site Green=Tags(s)

MSVAGLKKQFHKATQKVSEKVGGAEGTKLDDDFKEMERKVDVTSRAVMEIMTKTIEYLQPNPASRAKLSM  
 INTMSKIRGQEKGPYPQAEALLAEAMLKFGRELGDCCNFGPALGEVGEAMRELSEVKDSLIDIEVKQNF I  
 DPLQNLHDKDLREIQHHLKKLEGRRLDFDYKKRQGGKIPDEELRQALEKFDESKEIAESSMFNLLEMDIE  
 QVSQLSALVQAQLEYHKQAVQIILQQVTVRLEERIRQASSQPRREYQPKPRMSLEFPTGDSTQPNGGLSHT  
 GTPKPSGVQMDQPCCRALYDFEPENEGELGFKEGDIITL TNQIDENWYEGMLHGHSGFPIINYVEILVAL  
 PH

TRTRPLEQKLISEEDLAANDILDYKDDDDKVV

**Chromatograms:** [https://cdn.origene.com/chromatograms/mg2944\\_h09.zip](https://cdn.origene.com/chromatograms/mg2944_h09.zip)

**Restriction Sites:** SgfI-MluI

**Cloning Scheme:**



\* The last codon before the Stop codon of the ORF

**ACCN:** NM\_003026

**ORF Size:** 1056 bp

**OTI Disclaimer:** The molecular sequence of this clone aligns with the gene accession number as a point of reference only. However, individual transcript sequences of the same gene can differ through naturally occurring variations (e.g. polymorphisms), each with its own valid existence. This clone is substantially in agreement with the reference, but a complete review of all prevailing variants is recommended prior to use. [More info](#)

**OTI Annotation:** This clone was engineered to express the complete ORF with an expression tag. Expression varies depending on the nature of the gene.

**Components:** The ORF clone is ion-exchange column purified and shipped in a 2D barcoded Matrix tube containing 10ug of transfection-ready, dried plasmid DNA (reconstitute with 100 ul of water).

**Reconstitution Method:**

1. Centrifuge at 5,000xg for 5min.
2. Carefully open the tube and add 100ul of sterile water to dissolve the DNA.
3. Close the tube and incubate for 10 minutes at room temperature.
4. Briefly vortex the tube and then do a quick spin (less than 5000xg) to concentrate the liquid at the bottom.
5. Store the suspended plasmid at -20°C. The DNA is stable for at least one year from date of shipping when stored at -20°C.

**RefSeq:** [NM\\_003026.5](#)

**RefSeq Size:** 2540 bp

**RefSeq ORF:** 1059 bp

**Locus ID:** 6456

**UniProt ID:** [Q99962](#)

**Cytogenetics:** 9p22.2

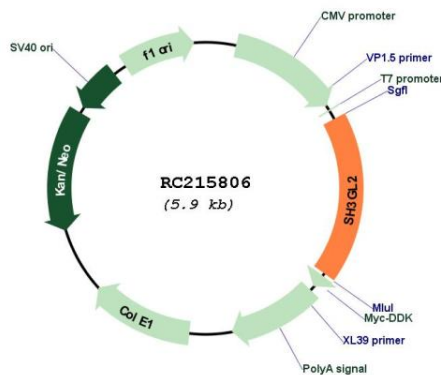
**Domains:** SH3, BAR

**Protein Pathways:** Endocytosis

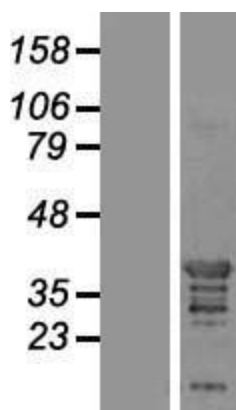
**MW:** 39.8 kDa

**Gene Summary:** Implicated in synaptic vesicle endocytosis. May recruit other proteins to membranes with high curvature. Required for BDNF-dependent dendrite outgrowth. Cooperates with SH3GL2 to mediate BDNF-NTRK2 early endocytic trafficking and signaling from early endosomes. [UniProtKB/Swiss-Prot Function]

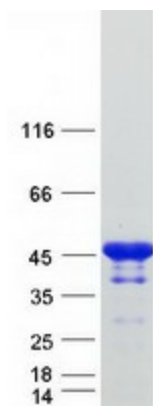
### Product images:



Circular map for RC215806



Western blot validation of overexpression lysate (Cat# [LY418947]) using anti-DDK antibody (Cat# [TA50011-100]). Left: Cell lysates from untransfected HEK293T cells; Right: Cell lysates from HEK293T cells transfected with RC215806 using transfection reagent MegaTran 2.0 (Cat# [TT210002]).



Coomassie blue staining of purified SH3GL2 protein (Cat# [TP315806]). The protein was produced from HEK293T cells transfected with SH3GL2 cDNA clone (Cat# RC215806) using MegaTran 2.0 (Cat# [TT210002]).