

## Product datasheet for **RC215805**

### MTFR1L (NM\_001099626) Human Tagged ORF Clone

#### Product data:

Product Type:	Expression Plasmids
Product Name:	MTFR1L (NM_001099626) Human Tagged ORF Clone
Tag:	Myc-DDK
Symbol:	MTFR1L
Synonyms:	FAM54B; HYST1888; MST116; MSTP116
Mammalian Cell Selection:	Neomycin
Vector:	pCMV6-Entry (PS100001)
E. coli Selection:	Kanamycin (25 ug/mL)
ORF Nucleotide Sequence:	>RC215805 ORF sequence Red=Cloning site Blue=ORF Green=Tags(s)

TTTTGTAATACGACTCACTATAGGGCGCCGGGAATTCGTCGACTGGATCCGGTACCGAGGAGATCTGCC  
GCC**CGATCGCC**

ATGTCAGGAATGGAAGCCACTGTGACCATCCCAATCTGGCAAACAAGCCACATGGGGCTGCTCGAAGTG  
TAGTAAGAAGAATTGGGACCAACCTACCCTTGAAGCCGTGTGCCCGGGCGTCCTTTGAGACCCTGCCAA  
CATCTCTGACCTGTGTTTGTAGAGATGTGCCCCAGTCCCTACCCTGGCTGACATCGCCTGGATTGCTGCG  
GATGAAGAGGAGACATATGCCCGGGTCAAGAGTGATACGCGCCCCCTGAGGCACACCTGAAACCCAGCC  
CTCTGATTGTCATGCAGCGCAATGCCTCTGTTCCCAACCTGCGTGGGTCCGAGGAGAGGCTTCTGGCCCT  
GAAGAAGCCAGCTCTGCCAGCCCTAAGCCGCACTACTGAGCTGCAGGACGAGCTGAGCCACTTGCGCAGC  
CAGATTGCAAAGATAGTGGCAGCTGATGCAGCTTCGGCTTCATTAACGCCAGATTTCTTATCTCCAGGAA  
GTTCAAATGTCTCTTCTCCCTTACCTTGTGTTTGGATCCTCATTCCACTCTACAACCTCCTTTGTCTAGT  
TGACATCACCGAGGAGACAGAGGTGGAGGTCCCTGAGCTTCCATCAGTCCCCCTGCTTTGTTCTGCCAGC  
CCTGAATGTTGCAAACAGAACAAAGCTGCCTGCAGTTCGTCTGAAGAGGATGACTGCGTCTCTTTGT  
CCAAGGCCAGCAGCTTTGCAGACATGATGGGTATCCTGAAGGACTTTACCGAATGAAACAGAGTCAAGA  
TCTGAACCGGAGTTTATTGAAGGAGGAAGACCTGTGCTTATCTCTGAGTCCCTAAGGAGGAAGTTT  
GCTCTAAAGGAAGAAGATATCAGTAGAAAAGGAAAT

**ACGCGT**ACGCGGGCCGCTCGAGCAGAAACTCATCTCAGAAGAGGATCTGGCAGCAAATGATATCCTGGATT  
ACAAGGATGACGACGATAAGGTTTAA



[View online »](#)

**Protein Sequence:** >RC215805 protein sequence  
Red=Cloning site Green=Tags(s)

MSGMEATVTIPIWQNKPHGAARSVVRRIQTNLPLKPCARASFETLPNISDLCLRDVPPVPTLADIAWIAA  
 DEEETYARVRS DTRPLRHTWKPSPLIVMQRNASVPNLRGSEERLLALKKPALPALSRTELQDEL SHLRS  
 QIAKIVAADAASASLTPDFLSPGSSNVSSPLPCFGSSFHSTTSFVVISDITEETEVEVPELPSVPLLC SAS  
 PECCCKPEHKAACSSSEEDDCVLSKASSFADMMGILKDFHRMKQSQDLNRSLLKEEDPAVLISEVLR RKF  
 ALKEEDISRKGN

TRTRPLEQKLISEEDLAANDILDYKDDDDKV

**Chromatograms:** [https://cdn.origene.com/chromatograms/mk6418\\_g06.zip](https://cdn.origene.com/chromatograms/mk6418_g06.zip)

**Restriction Sites:** SgfI-MluI

**Cloning Scheme:**



**ACCN:** NM\_001099626

**ORF Size:** 876 bp

**OTI Disclaimer:** The molecular sequence of this clone aligns with the gene accession number as a point of reference only. However, individual transcript sequences of the same gene can differ through naturally occurring variations (e.g. polymorphisms), each with its own valid existence. This clone is substantially in agreement with the reference, but a complete review of all prevailing variants is recommended prior to use. [More info](#)

**OTI Annotation:** This clone was engineered to express the complete ORF with an expression tag. Expression varies depending on the nature of the gene.

**Components:** The ORF clone is ion-exchange column purified and shipped in a 2D barcoded Matrix tube containing 10ug of transfection-ready, dried plasmid DNA (reconstitute with 100 ul of water).

**Reconstitution Method:**

1. Centrifuge at 5,000xg for 5min.
2. Carefully open the tube and add 100ul of sterile water to dissolve the DNA.
3. Close the tube and incubate for 10 minutes at room temperature.
4. Briefly vortex the tube and then do a quick spin (less than 5000xg) to concentrate the liquid at the bottom.
5. Store the suspended plasmid at -20°C. The DNA is stable for at least one year from date of shipping when stored at -20°C.

**RefSeq:** [NM\\_001099626.1](#), [NP\\_001093096.1](#)

**RefSeq Size:** 2074 bp

**RefSeq ORF:** 879 bp

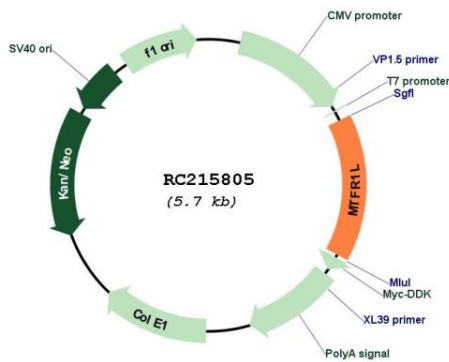
**Locus ID:** 56181

**UniProt ID:** [Q9H019](#)

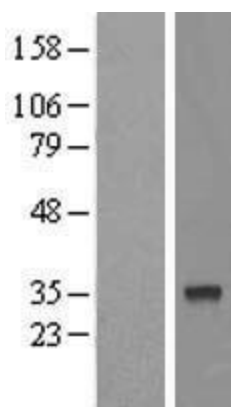
**Cytogenetics:** 1p36.11

**MW:** 32 kDa

**Product images:**



Circular map for RC215805



Western blot validation of overexpression lysate (Cat# [LY420465]) using anti-DDK antibody (Cat# [TA50011-100]). Left: Cell lysates from untransfected HEK293T cells; Right: Cell lysates from HEK293T cells transfected with RC215805 using transfection reagent MegaTran 2.0 (Cat# [TT210002]).