

Product datasheet for RC215800

TRAPPC9 (NM_031466) Human Tagged ORF Clone

Product data:

Product Type:	Expression Plasmids
Product Name:	TRAPPC9 (NM_031466) Human Tagged ORF Clone
Tag:	Myc-DDK
Symbol:	TRAPPC9
Synonyms:	IBP; IKBKBBP; MRT13; NIBP; T1; TRS120
Mammalian Cell Selection:	Neomycin
Vector:	pCMV6-Entry (PS100001)
E. coli Selection:	Kanamycin (25 ug/mL)
ORF Nucleotide Sequence:	>RC215800 representing NM_031466 Red=Cloning site Blue=ORF Green=Tags(s)

TTTTGTAATACGACTCACTATAGGGCGCCGGGAATTCGTCGACTGGATCCGGTACCGAGGAGATCTGCC
GCC**CGATCGC**C

ATGGTGCCAGCTGGGGATCAAGACCGCGGCCACACAGGGGGAAGCCGGCCAGGCTGGGGCTCGCACCT
CACGTGCCTCCCGGGCCCTGCGATCCTGGAGGCGCTCCAGGCCGCGCGCCACGGTCACCACCCACG
TGGGGGACGACCGTGGGAGTCACGGGGGTACCGTGGGGTACAGGGGGTCCCGCAGGGATCCACAG
TGGGCTTCGCGGGGCCCTCCACCCCTGAGCTTACAGAGGAAGTAAATTTGAGCTGCGCCCTGAAGG
ACTGGGACTTCAAATGAGCGTCCCTGACTACATGCAGTGTGCTGAGGACCACCAGACGCTGCTCGTGGT
GGTCCAGCCTGTGGGCATCGTCTCCGAGGAGAACTTCTCAGGATCTATAAGAGGATTTGCTCTGTGAGT
CAGATCAGCGTGCGGGACTCCCAGCGAGTCTCTACATCCGCTACAGGCACCACTACCCACCCGAGAACA
ACGAGTGGGGTGACTTCCAGACCCACCGCAAAGTCGTGGGCTCATCACCATCACAGACTGCTTCTCGGC
CAAGGACTGGCCACAGACCTTTGAGAAGTTCACGTGCAGAAGGAGATCTACGGCTCCACACTGTATGAC
TCCCGGCTCTTTGTCTTCGGGCTGCAGGGGAGATCGTGGAGCAGCCGCGCACCGACGTGGCTTTTACC
CCAACACGAGGACTGCCAGACGGTGGAGAAGAGAATCGAGGACTTCATCGAGTCACTGTTTCATCGTGT
GGAGTCCAAGCGTCTGGACAGAGCCACAGACAAGTCTGGGGATAAGATCCCCCTTCTCTGTGCCGTTT
GAGAAAAAGGACTTTGTAGGACTGGACACAGACAGCAGACATTACAAGAAGCGGTGCCAAGGCCGATGC
GGAAGCACGTGGGGACCTGTGCCTGCAGGCAGGGATGCTGCAGGACTCCCTGGTGCATTACCACATGTC
GGTGGAGCTGCTGCGTTCTGTGAATGACTTTCTGTGGCTTGGAGCTGCCCTGGAAGGATTGTGTTACGCT
TCTGTCTATCACTATCCTGGTGGAACTGGTGGGAAGAGTGGAGCTCGGAGGTTCCAGGGCAGCACCC
TTCCTGTGAAGCAGCCAATAGACACCGGCCAGGGGCACAGGAAGTTCTCATTGATCCAGGTGCCCTCAC
CACCAATGGCATCAACCCTGACACCACTACTGAGATCGGACGTGCTAAGAAGTGCCTTAGCCCTGAAGAC
ATAATTGACAAGTATAAAGAGGCGATTTCTATTACAGCAAGTATAAGAATGCGGGAGTGATTGAGTTGG
AAGCGTGCATCAAGGCTGTACGTGCTTGCATTCAGAAACGGAGCATGGAAGCATCAGAAATTTCTTCA
GAATGCAGTTTACATTAACCTTCGACAGCTTTCTGAGGAAGAGAAAATTCAGCGCTACAGCATCCTCTCC



[View online >](#)

GAGCTCTATGAGCTGATCGGCTTCCATCGCAAGTCTGCGTTCTTCAAGCGCGTGGCCGCCATGCAGTGCG
TGGCCCCAAGCATCGCGGAGCCTGGGTGGAGGGCTGCTACAACTCCTCCTGGAACGCTGCCCGGCTA
CAGTCTGTCGCTGGATCCCAAAGATTTACAGCAGAGGCACGCACAGAGGCTGGGCTGCGGTCCAGATGCGT
TTGCTCCATGAATTGGTCTACGCCTCCCGAAGGATGGGGAACCTGCCCTCTCTGTCAGACACCTGTCT
TCCTTCTACAGACCATGCTGGACTTCTTGTGCGATCAGGAAAAGAAAGATGTGGCCCAAAGCCTAGAGAA
CTATACGTCCAAGTGTCTGGGACCATGGAGCCCATCGCCCTCCCTGGCGGCCTACCCTGCCACCGGTG
CCCTTACCAAGCTTCCCATCGTCAGGCATGTGAAACTATTGAACCTTCTGCTAGCCTCCGGCCACACA
AAATGAAAAGCTTGTGGGTGAGAACGTGTCAACCAAAAGTCCTTTCATCTATTACCAATTATCGCACA
CAACCGTGGAGAAGAGCGGAACAAGAAAATAGATTTCCAGTGGGTCAAGGAGATGTGTGTGAAGTTCAG
CTGATGGTATATAACCCAATGCCGTTTGAACCTCGAGTTGAAAACATGGGGCTGCTCACCAGCGGAGTGG
AGTTCGAGTCTCTCCCTGCGGCGCTTCTCTTCCGGCTGAATCTGGTCTGTACCCAGTGACGCTCGTCGG
GGTCCCGCAGACGACTGGAACGATTACTGTGAACGGTTACCATAACCACGGTCTTCGGTGTGTTTCAGTGAC
TGTTTGTGGATAACCTGCCGGGAATAAAAACAGTGGCTCCACAGTGAAGTCAATCCCGCTTGGCCAA
GACTGCAGATCAGCACCTCTCTGCCAGATCTGCACATTCATTGCAACCTTCTTCTGGTGTGAAATATC
TACTAATGTATCTGTCCAGCTTTACAATGGAGAAAGTCAAGCAACTAATCATTAAATTGAAAATATTGGA
ATGGAACCATGGAGAACTGGAGGTCACTCGAAAGTCTCACCCTAAAGAAAATTGTATGGCGACT
TCTTGAGCTGGAAGCTAGAGGAAACCTTGCCAGTTCCTTTGCAGCCTGGGAAGTGGCCACGTTTAC
AATCAACATCAAAGTGAAGCTGGATTTCTCCTGCCAGGAGAATCTCCTGCAGGATCTCAGTGTGATGGA
ATCAGTGTGAGTGGCTTTCCCTGTCCAGTCTTTTTCGGCAGGTGCTTCCGCCCCGAGTGGAGGGCAAA
CTGTGAACCCACCGAGAGCAACAAGCAGGCGACTACAGCCACGTGAAGACCCTGGAAGCTGTCTGAA
TTTCAAATACTCTGGAGGCCCGGCCACACTGAAGGATATTACAGGAATCTCTCCCTGGGCTGCATGTA
GAAGTCGAGCCGTCTGTATTTTTCACCCGAGTCAGCACCTCCCAGCAACCAGTACCCGGCAGTGTACC
TGCTCCTGGATGTCTTCACTCCACCGAGCATGAGTGCACGTCAGCACCAGGAGCAGCGAGGCACTCAT
CCTGCACGCCGGGAGTGCCAGCGAATGGCTATTCAAGTGGACAAGTTCAACTTTGAGAGTTTCCGGAG
TCCCCTGGGAGAAAGGGCAATTTGCAAACCCAAAGCAGCTGGAGGAAGAGCGGCGGGAAGCCCGAGGCC
TGGAGATCCACAGCAAGCTGGGCATCTGCTGGAGAATCCCTCCCTGAAGCGCAGTGGCGAGGCGAGTGT
GGAAGGACTCCTGAACCAGCTCGTCTGGAGCACCTGCAGCTGGCGCCTCTGCAGTGGGATGTGCTGGT
GACGGACAGCCATGTGACCGCGAGGCTGTGGCGCCTGCCAGGTGGCGACCCCGTGCAGTGGAGGTGC
GGCTGACCAACCGGAGCCCGCGCAGCGTAGGGCCCTTCGCCCTACTGTGGTCCCCTTCCAGGACCACCA
GAACGGCGTGCACAACACTACGACCTGCACGACACCGTCTCCTTCGTGGGCTCCAGCACCTTCTACCTCGAC
GCGGTGCAGCCGTCCGGCCAGTCGGCCTGCCTCGGGCCCTCCTTCTCTACACGGGAGACTTCTTCC
TCCACATCCGTTCCACGAGGACAGCACCAGCAAGGAGTGCACCCCTTTGGTTCTGCCTGCCAGTGT
GCACGTGTGTGCCCTGGAGGCGCAGGCC

ACGCGTACGCGGCCGCTCGAGCAGAACTCATCTCAGAAGAGGATCTGGCAGCAATGATATCCTGGATT
ACAAGGATGACGACGATAAGGTTAA

Protein Sequence: >RC215800 representing NM_031466
 Red=Cloning site Green=Tags(s)

MVPAGDQDRAPHRGKPAQAGARTSRASRALRSWRRSQAARATVTHPRGGHDRGSHGGYREGHRGCRDPQ
 WASAGPPPLSFTTEEVKFLRALKDWFKMSVPDYMQCAEDHQTLVVVQPVGIVSEENFRIFYKRICSVS
 QISVRDSQRVLYIRYRHHYPENNEWGDFQTHRKVVGLITITDCFSAKDWPTFEKFHVQKEIYGSTLYD
 SRLVFVGLQGEIVEQPRTDVAFYPNYEDCQTVEKRIEDFIESLFI VLESKRDRATDKSGDKIPLLCPVF
 EKKDFVGLDTSRHYKKRCQGRMRKHVGDLC LQAGMLQDSL VHYHMSVELLRVNDLWLGALEGLCSA
 SVIYHYPGGTGGKSGARRFQGSTLPAEAANRHRPGAQEV LIDPGALTTNGINPDTSTEIGRAKNCLSPED
 IIDKYKEAISYYSKYKNAGVIELEACIKAVRVLAIQKRSMEASEFLQNAVYINLRQLSEEEKIQRYSILS
 ELYELIGFHRKSAFFKRVAAMQCVAPSAIEPGWRACYKLLLETLPGYSLSLDPKDFSRGTHRGWAAVQMR
 LLHEL VYASRRMGNPALSVRHL SFL LQTMLDFLSDQEKDVAQSL ENYTSKCPGTMEPIALPGGLTPPV
 PFTKLP IVRHVKLLNLPASLRPHKMK SLLGQNVSTKSPFIYSPIIAHNRGEERNKIDFQWVQGDVCEVQ
 LMVYNPMPFELRVENMGLL TSGVEFESLPAALSLPAESGLYPVTLVGVPTTGTITVNGYHTTVFGVFS
 CLLDNLPGIKTSGSTVEVIPALPRLQISTSLPRSAHSLQPSGGDEISTNVSQVLYNGESQQLIIKLENIG
 MEPLKLEVT SKVLT TTKELYGDFLSWKLEETLAQFPLQPGKVATFTINIKVKLDFSCQENLLQDLSDDG
 ISVSGFPLSSPFRQVVRPRVEGKPVNPPESNKAGDYSHVKTLEAVLNFKYSGGPGHTEGYRNL S LGLHV
 EVEPSVFFTRVSTLPATSTRQCHLLLDVFNSTEHELTVSTRSSEALILHAGECQRMAIQVDKFNFEFPE
 SPGEKQGFANPKQLEERREARGLEIHSKLGICWRIPSLKRSGEASVEGLLNQLVLEHLQLAPLQWDV L V
 DGQPCDREAVAACQVGPVRLVRLTNRSPRSVGFALTVVPFQDHQNGVHNYDLHDTVSVFVGSSTFYLD
 AVQPSGQSACL GALLFLYTGDFFLHIRFHEDSTSKELPPSWFCLPSVHVCALEAQA

TRTRPLEQKLISEEDLAANDILDYKDDDDKV

Chromatograms: https://cdn.origene.com/chromatograms/mk8028_d10.zip

Restriction Sites: SgfI-MluI

Cloning Scheme:

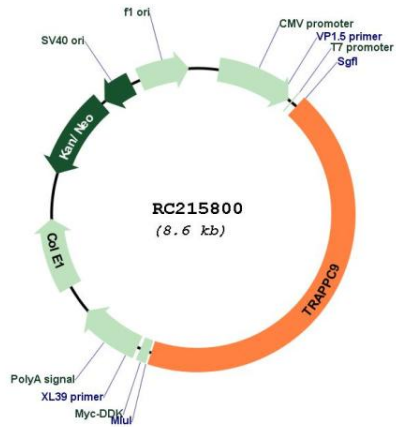


ACCN: NM_031466

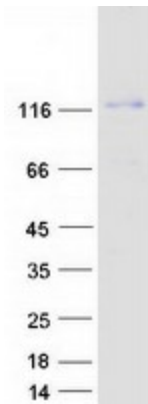
ORF Size: 3738 bp

OTI Disclaimer:	The molecular sequence of this clone aligns with the gene accession number as a point of reference only. However, individual transcript sequences of the same gene can differ through naturally occurring variations (e.g. polymorphisms), each with its own valid existence. This clone is substantially in agreement with the reference, but a complete review of all prevailing variants is recommended prior to use. More info
OTI Annotation:	This clone was engineered to express the complete ORF with an expression tag. Expression varies depending on the nature of the gene.
Components:	The ORF clone is ion-exchange column purified and shipped in a 2D barcoded Matrix tube containing 10ug of transfection-ready, dried plasmid DNA (reconstitute with 100 ul of water).
Reconstitution Method:	<ol style="list-style-type: none">1. Centrifuge at 5,000xg for 5min.2. Carefully open the tube and add 100ul of sterile water to dissolve the DNA.3. Close the tube and incubate for 10 minutes at room temperature.4. Briefly vortex the tube and then do a quick spin (less than 5000xg) to concentrate the liquid at the bottom.5. Store the suspended plasmid at -20°C. The DNA is stable for at least one year from date of shipping when stored at -20°C.
RefSeq:	NM_031466.5
RefSeq Size:	4473 bp
RefSeq ORF:	3447 bp
Locus ID:	83696
UniProt ID:	Q96Q05
Cytogenetics:	8q24.3
MW:	139.3 kDa
Gene Summary:	This gene encodes a protein that likely plays a role in NF-kappa-B signaling. Mutations in this gene have been associated with autosomal-recessive cognitive disability. Alternatively spliced transcript variants have been described.[provided by RefSeq, Feb 2010]

Product images:



Circular map for RC215800



Coomassie blue staining of purified TRAPPC9 protein (Cat# [TP315800]). The protein was produced from HEK293T cells transfected with TRAPPC9 cDNA clone (Cat# RC215800) using MegaTran 2.0 (Cat# [TT210002]).