

Product datasheet for **RC215799**

DDX26 (INTS6) (NM_001039938) Human Tagged ORF Clone

Product data:

Product Type:	Expression Plasmids
Product Name:	DDX26 (INTS6) (NM_001039938) Human Tagged ORF Clone
Tag:	Myc-DDK
Symbol:	DDX26
Synonyms:	DBI-1; DDX26; DDX26A; DICE1; HDB; INT6; Notch12
Mammalian Cell Selection:	Neomycin
Vector:	pCMV6-Entry (PS100001)
E. coli Selection:	Kanamycin (25 ug/mL)
ORF Nucleotide Sequence:	<p>>RC215799 representing NM_001039938</p> <p>Red=Cloning site Blue=ORF Green=Tags(s)</p> <p>TTTGTGAATACGACTCACTATAGGGCGGCCGGAATTCGTCGACTGGATCCGGTACCGAGGAGATCTGCCGCCGCGATCGCC</p> <p>ATGCCATCTTACTGTTCTGATAGACACGTCTGCCTCTATGAACCAGCGCAGCCATCTGGGCACCACCTACCTGGACACGGCCAAAGGCGCGGTAGAGACCTTCATGAAGCTCCGTGCCCGGACCTGCCAGCAGAGGAGACAGGTATATGCTGGTCACTTTCGAAGAGCCGCCCTATGCTATCAAGGCTGGATGAAAGAAAACCATGCAACGTTTATGAATGAATTGAAAAACCTTCAGGCTGAAGGACTTACGACTCTTGCCCAATCCCTAAGGACAGCTTTTGATTATTAATTTAAATAGATTAGTAAGTGGCATAGACAACTATGGGCAGGTAGGT</p> <p>ACGCGTACGCGGCCGCTCGAGCAGAACTCATCTCAGAAGAGGATCTGGCAGCAAATGATATCCTGGATTACAAGGATGACGACGATAAGGTTTAA</p>
Protein Sequence:	<p>>RC215799 representing NM_001039938</p> <p>Red=Cloning site Green=Tags(s)</p> <p>MPILLFLIDTSASMNQRSHLGTYYLDTAKGAVETFMKLRARDPASRGDRYMLVTFEPPYAIKAGWKENHATFMNELKNLQAEGLTTLGQSLRTAFDLLNLRVTGIDNYGQVG</p> <p>TRTRPLEQKLISEEDLAANDILDYKDDDDKV</p>
Chromatograms:	https://cdn.origene.com/chromatograms/mk8028_g03.zip
Restriction Sites:	SgfI-MluI


[View online »](#)

Cloning Scheme:



ACCN: NM_001039938

ORF Size: 345 bp

OTI Disclaimer: The molecular sequence of this clone aligns with the gene accession number as a point of reference only. However, individual transcript sequences of the same gene can differ through naturally occurring variations (e.g. polymorphisms), each with its own valid existence. This clone is substantially in agreement with the reference, but a complete review of all prevailing variants is recommended prior to use. [More info](#)

OTI Annotation: This clone was engineered to express the complete ORF with an expression tag. Expression varies depending on the nature of the gene.

Components: The ORF clone is ion-exchange column purified and shipped in a 2D barcoded Matrix tube containing 10ug of transfection-ready, dried plasmid DNA (reconstitute with 100 ul of water).

Reconstitution Method:

1. Centrifuge at 5,000xg for 5min.
2. Carefully open the tube and add 100ul of sterile water to dissolve the DNA.
3. Close the tube and incubate for 10 minutes at room temperature.
4. Briefly vortex the tube and then do a quick spin (less than 5000xg) to concentrate the liquid at the bottom.
5. Store the suspended plasmid at -20°C. The DNA is stable for at least one year from date of shipping when stored at -20°C.

Note: Plasmids are not sterile. For experiments where strict sterility is required, filtration with 0.22um filter is required.

RefSeq: [NM_001039938.2](#)

RefSeq Size: 2494 bp

RefSeq ORF: 348 bp

Locus ID: 26512

UniProt ID: [Q9UL03](#)

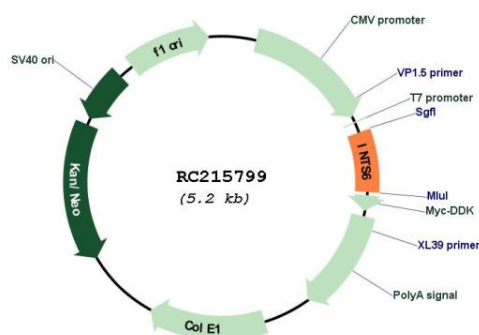
Cytogenetics: 13q14.3

Protein Families: Druggable Genome

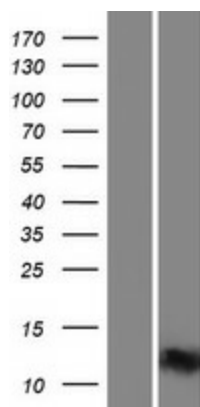
MW: 12.7 kDa

Gene Summary: DEAD box proteins, characterized by the conserved motif Asp-Glu-Ala-Asp (DEAD), are putative RNA helicases. The protein encoded by this gene is a DEAD box protein that is part of a complex that interacts with the C-terminus of RNA polymerase II and is involved in 3' end processing of snRNAs. In addition, this gene is a candidate tumor suppressor and is located in the critical region of loss of heterozygosity (LOH). Multiple transcript variants encoding different isoforms have been found for this gene. [provided by RefSeq, Apr 2015]

Product images:



Circular map for RC215799



Western blot validation of overexpression lysate (Cat# [LY421861]) using anti-DDK antibody (Cat# [TA50011-100]). Left: Cell lysates from untransfected HEK293T cells; Right: Cell lysates from HEK293T cells transfected with RC215799 using transfection reagent MegaTran 2.0 (Cat# [TT210002]).