

Product datasheet for RC215794

PTCRA (NM_138296) Human Tagged ORF Clone

Product data:

Product Type:	Expression Plasmids
Product Name:	PTCRA (NM_138296) Human Tagged ORF Clone
Tag:	Myc-DDK
Symbol:	PTCRA
Synonyms:	PT-ALPHA; PTA
Mammalian Cell Selection:	Neomycin
Vector:	pCMV6-Entry (PS100001)
E. coli Selection:	Kanamycin (25 ug/mL)
ORF Nucleotide Sequence:	>RC215794 representing NM_138296 Red=Cloning site Blue=ORF Green=Tags(s)

TTTTGTAATACGACTCACTATAGGGCGGCCGGAATTCGTCGACTGGATCCGGTACCGAGGAGATCTGCC
GCC**CGATCGCC**

ATGGCCGGTACATGGCTGCTACTTCTCCTGGCCCTTGGGTGTCCAGCCCTACCCACAGGTGTGGCGGCA
CACCCCTTCTCTGGCCCCACCAATCATGCTGCTGGTGGATGGAAAGCAGCAGATGGTGGTGGTCTG
CCTGGTCCTTGATGTTGCACCCCTGGCCTTGACAGCCCATCTGGTTCTCAGCCGGCAATGGCAGTGCA
CTGGATGCCTTACCTATGGCCCTTCCCAGCAACGGATGGCACCTGGACCAACTGGCCCATCTCTCCC
TGCTTCTGAGGAGCTGGCATCCTGGGAGCCTTGGTCTGCCACACTGGGCTGGGGCTGAGGGTCACAG
CAGGAGTACACAGCCCATGCATCTGTCCAGGAGAGGCTTACAGCCAGGACCTGCCCCAGGAGCCTCTC
AGGGGGACACCGGTGGGGCGCTGTGGCTGGGGTCTGCGGCTGCTGCTCTTAAGCTGCTGCTTTTG
ACCTGCTCCTGACCTGCAGCTGCCTGTGCGACCCCGGGCCCGCTGCCTTCCCCGCAACCACCACCCG
CCTGCGAGCCCTCGGCTCCCATCGACTGCACCCGGCCACGGAGACTGGGGACGAGAGGCCACCAGCTCA
CCCAGACCCAGCCTCGGGACCGCCGCTGGGGTGCACCCCTCCGGTCCGGAAGCCCGGGAGCCAGTAT
GGGGGAAGGGTCTTACCTCAGCAGTTACCCACTGCCAGCACAGGCTGGTCTCAAGATCTGCCCT
CAGGGCTCCTTCTCCAGTCTTGAGCATTTCCTGAGGTGACCTGCCTCCTCTCTGCAGGCTGGAGCT
GCC

ACGCGTACGCGGCCGCTCGAGCAGAACTCATCTCAGAAGAGGATCTGGCAGCAAATGATATCTGGATT
ACAAGGATGACGACGATAAGGTTAA



[View online »](#)

Protein Sequence: >RC215794 representing NM_138296
Red=Cloning site Green=Tags(s)

MAGTWLLLLLALGCPALPTGVGGTPFPPSLAPPIMLLVDGKQMVVCLVLDVAPPGLDSPWF SAGNGSA
 LDAFTYGPSPATDGTWNL A H L S L P S E E L A S W E P L V C H T G P G A E G H S R S T Q P M H L S G E A S T A R T C P Q E P L
 R G T P G G A L W L G V L R L L L F K L L L F D L L L T C S C L C D P A G L P L S P A T T T R L R A L G S H R L H P A T E T G G R E A T S S
 P R P Q P R D R R W G D T P P G R K P G S P V W G E G S Y L S S Y P T C P A Q A W C S R S A L R A P S S S L G A F F A G D L P P P L Q A G A
 A

TRTRPLEQKLISEEDLAANDILDYKDDDDKV

Chromatograms: https://cdn.origene.com/chromatograms/mk6779_e05.zip

Restriction Sites: SgfI-MluI

Cloning Scheme:



* The last codon before the Stop codon of the ORF

ACCN: NM_138296

ORF Size: 843 bp

OTI Disclaimer: The molecular sequence of this clone aligns with the gene accession number as a point of reference only. However, individual transcript sequences of the same gene can differ through naturally occurring variations (e.g. polymorphisms), each with its own valid existence. This clone is substantially in agreement with the reference, but a complete review of all prevailing variants is recommended prior to use. [More info](#)

OTI Annotation: This clone was engineered to express the complete ORF with an expression tag. Expression varies depending on the nature of the gene.

Components: The ORF clone is ion-exchange column purified and shipped in a 2D barcoded Matrix tube containing 10ug of transfection-ready, dried plasmid DNA (reconstitute with 100 ul of water).

Reconstitution Method:

1. Centrifuge at 5,000xg for 5min.
2. Carefully open the tube and add 100ul of sterile water to dissolve the DNA.
3. Close the tube and incubate for 10 minutes at room temperature.
4. Briefly vortex the tube and then do a quick spin (less than 5000xg) to concentrate the liquid at the bottom.
5. Store the suspended plasmid at -20°C. The DNA is stable for at least one year from date of shipping when stored at -20°C.

Note: Plasmids are not sterile. For experiments where strict sterility is required, filtration with 0.22um filter is required.

RefSeq: [NM_138296.3](#)

RefSeq Size: 1080 bp

RefSeq ORF: 846 bp

Locus ID: 171558

UniProt ID: [Q6ISU1](#)

Cytogenetics: 6p21.1

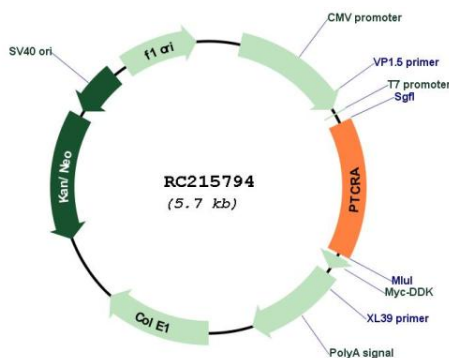
Protein Families: Transmembrane

Protein Pathways: Notch signaling pathway

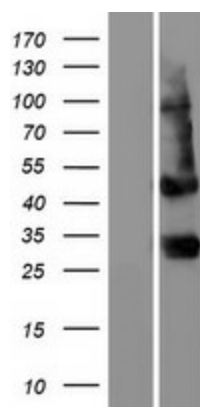
MW: 29.1 kDa

Gene Summary: The protein encoded by this gene is a single-pass type I membrane protein that is found in immature but not mature T-cells. Along with TCRB and CD3 complex, the encoded protein forms the pre-T-cell receptor complex, which regulates early T-cell development. Four transcript variants encoding different isoforms have been found for this gene.[provided by RefSeq, Jul 2011]

Product images:



Circular map for RC215794



Western blot validation of overexpression lysate (Cat# [LY408715]) using anti-DDK antibody (Cat# [TA50011-100]). Left: Cell lysates from untransfected HEK293T cells; Right: Cell lysates from HEK293T cells transfected with RC215794 using transfection reagent MegaTran 2.0 (Cat# [TT210002]).