

Product datasheet for **RC215791**

AP2B1 (NM_001282) Human Tagged ORF Clone

Product data:

Product Type:	Expression Plasmids
Product Name:	AP2B1 (NM_001282) Human Tagged ORF Clone
Tag:	Myc-DDK
Symbol:	AP2B1
Synonyms:	ADTB2; AP2-BETA; AP105B; CLAPB1
Mammalian Cell Selection:	Neomycin
Vector:	pCMV6-Entry (PS100001)
E. coli Selection:	Kanamycin (25 ug/mL)



[View online »](#)

ORF Nucleotide Sequence:

>RC215791 representing NM_001282
 Red=Cloning site Blue=ORF Green=Tags(s)

TTTTGTAATACGACTCACTATAGGGCGGCCGGGAATTCGTCGACTGGATCCGGTACCGAGGAGATCTGCC
 GCC**CGGATCGCC**

ATGACTGACTCCAAGTATTTACAACCAATAAAAAAGGAGAAATATTTGAACTAAAAGCTGAACTCAACA
 ATGAAAAGAAAAGAAAAGAGAAAGGAGGCTGTGAAGAAAGTGATTGCTGCTATGACCGTGGGAAGGATGT
 TAGTTCTCTCTTTCCAGACGTAGTGAAGTGTATGCAGACTGACAATCTGGAATAAAGAAGCTTGTGTAT
 CTCTACTTGATGAACTACGCCAAGAGTCAGCCAGACATGGCCATCATGGCTGTAACAGCTTTGTGAAGG
 ACTGTGAAGATCCTAATCCTTTGATTGAGCCTTGGCAGTCAGAACCATGGGGTGCATCCGGGTAGACAA
 AATTACAGAATATCTCTGTGAGCCGCTCCGCAAGTGTGTAAGGATGAGGATCCCTATGTTCCGAAAAACA
 GCAGCAGTCTGCGTGGCAAACTCCATGATATCAATGCCAAATGGTGAAGATCAGGGATTTCTGGATT
 CTCTACGGGATCTCATAGCAGATTCAAATCCAATGGTGGTGGCTAATGCCGTAGCGGCATTATCTGAAAT
 CAGTGAGTCTACCCAAACAGCAACTTACTTGATCTGAACCCACAGAACATTAATAAGCTGCTGACAGCC
 CTGAATGAATGCACTGAATGGGGCCAGATTTTCATCCTGGACTGCCTGTCTAATTAACAACCTAAAGATG
 ATCGGGAGGCTCAGAGCATCTGTGAGCGGGTAACTCCCGGCTATCCCATGCCAACTCAGCAGTGGTGTCT
 TTCAGCGGTAAGTCTAATGAAGTTTCTAGAATTGTTACCTAAGGATTCGACTACTACAATATGCTG
 CTGAAGAAGTTAGCCCTCCACTTGTCACTTTGCTGTCTGGGAGCCAGAAGTGCAGTATGTCGCCCTGA
 GGAACATCAACTAATTTGCCAGAAAAGGCTGAAATCTGAAGCAGGAAATCAAAGTCTCTTTGTGAA
 GTACAATGATCCCATCTATGTTAACTAGAGAAGTTGGACATCATGATTCGTTTGGCATCAAGCCAAC
 ATTGCTCAGGTTCTGGCAGAAGTCAAAGAATATGCTACAGAGTGGATGTTGACTTTGTTGAAAAGCTG
 TGCGGGCCATTGGACGGTGTGCCATCAAGTGGAGCAATCTGCAGAGCGTGTGAAGCAGTCTTTGTA
 TCTAATCCAGACCAAAGTGAATTATGTGGTCCAAGAAGCAATTGTTGTCATCAGGGACATCTCCGCAAA
 TACCCCAACAAGTATGAAAGTATCATCGCCACTCTGTGTGAGAACTTAGACTCGTGGATGAGCCAGATG
 CTCGAGCAGTATGATTTGGATTGTGGGAGAATATGCTGAAAGAATTGACAATGCAGATGAGTTACTAGA
 AAGCTTCTGGAGGGTTTTACGATGAAAGCACCCAGGTGCAGCTCACTCTGCTTACTGCCATAGTGAAG
 CTGTTTCTCAAGAAACCATCAGAAACACAGGAGCTAGTCCAGCAGGTCTTGGATTTGGCAACACAGGATT
 CTGATAATCCTGACCTTCGAGACCGGGCTATATTTATGGCGCCTTCTCTCAACTGACCCTGTTACAGC
 TAAAGAAGTAGTCTTGTCTGAGAAGCCACTGATCTCTGAGGAGACGGACCTTATTGAGCCAACCTGCTG
 GATGAGCTAATCTGCCACATTGGTTCTTTGGCCTCTGTGTATCATAAGCCTCCCAATGCTTTTGTGGAAG
 GAAGTCATGGAATTCATCGTAAACACTTGCCAATTCATCATGGGAGCACTGATGCAGGTGACAGCCCTGT
 TGGCACTACCACTGCAACGAACCTGGAACAGCCTCAGGTTATCCCTCTCAAGGTGATCTCTAGGGGAT
 CTTTTAAACCTTGACCTCGTCCCCAGTCAATGTGCCACAGGTGCTCCATGCAGATGGGAGCAGTGG
 ATCTCCTAGGAGGAGGACTAGATAGTCTGGTGGGACAATCCTTCATCCCATCATCGGTCCCTGCAACCTT
 TGCTCCTTACCTACACCTGCTGTGGTCAGCAGTGGACTGAATGACCTGTTTGAAGTCTCCACAGGGATA
 GGCATGGCACCTGGTGGATATGTGGCTCCTAAGGCTGTCTGGCTACCTGCAGTAAAGGCTAAAGGCTTGG
 AGATTTCCGGAACATTTACTCACCGCAAGGGCACATCTATATGGAATGAACTTCACCAATAAAGCTCT
 GCAGCACATGACAGATTTTGAATCCAGTTTAAACAAAAATAGCTTTGGTGTATCCCCAGCACTCCTCTG
 GCCATCCATACCCACTGATGCCAAACCAGAGCATTGATGTCTCCTGCCTCTCAATACCTTGGGCCAG
 TCATGAAGATGGAACCTCTGAATAACCTCCAGGTGGCTGTGAAAAACAATATCGATGTCTTCTACTTCAG
 CTGCCATCCCCTCAATGTGCTTTTTGTAGAAGATGGCAAAATGGAGCGCCAGGTCTTCTTGAACA
 TGGAAGGATATCCCAATGAAAATGAACTTCAGTTTTCAGATTAAGGAATGTCATTTAAATGCTGACACTG
 TTTCCAGCAAGTTGCAAAAACAATGTTTATACTATTGCCAAGAGGAATGTGGAAGGGCAGGACATGCT
 GTACCAATCCCTGAAGCTCACTAATGGCATTGGATTTTGGCCGAACACGTATCCAGCCAGGAAACCCC
 AATTACACGCTGCACTGAAGTGTAGAGCTCCTGAAGTCTCTCAATACATCTATCAGGTCTACGACAGCA
 TTTTGA AAAAC

ACGCGTACGCGGCCGCTCGAGCAGAACTCATCTCAGAAGAGGATCTGGCAGCAAATGATATCCTGGATT
 ACAAGGATGACGACGATAAGGTTTAA

Protein Sequence: >RC215791 representing NM_001282
 Red=Cloning site Green=Tags(s)

MTDSKYFTTNKKGEIFELKAELNNEKKEKRKEAVKKVIAAMTVGKDVSSLPDVVNCMQTDNLELKKLVY
 LYLMNYAKSQPDMAIMAVNSFVKDCEDPNPLIRALAVRTMGCIRVDKITEYLCEPLRCKLKDEDPYVRKT
 AAVCVAKLHDINAQMVEDQGFLLDSLRLDIADSNPMVVANAVAALSEISESHPNLNLLDLPQNKLLTA
 LNECTEWGQIFILDCLSNYNPKDDREAQSI CERVTPRLSHANSVVL SAVKVLKFLLELPKSDYYNML
 LKKLAPPLVTL LSGEPEVQYVALRNINLIVQKRPEILKQEI KVFV KYNDPIYVKLEKLDIMIRLASQAN
 IAQVLAELKEYATEVDVDFVRKAVRAIGRAIKVEQSAERCVSTLLDLIQTKVNYVYVQEAI VVIRDIRK
 YPNKYESIATLCENLDSLDEPDARAAMIWIVGEYAERIDNADELLESFLEGFHDESTQVQLTLLTAIVK
 LFLKPKSETQELVQVLSLATQSDNPDLRDRGYIWRLLSTDPVTAKEVVLSEKPLISEETDLIEPTLL
 DELICHIGSLASVYHKPPNAFVEGSHGIHRKHLPIHHGSTDAGDSPVGT TATNLEQPQVIPSQGDLLGD
 LLNLDLGPVNVVQVSSMQMGAVDLLGGGLDSL VGQSFIPSSVPATFAPSPTPAVVSSGLNDFELSTGI
 GMAPGGYVAPKAVWLPVAVKAGLEISGTFTHRQGHYMEMNFTNKALQHMTDFAIQFNKNSFGVIPSTPL
 AIHTPLMPNQSIDVSLPLNLTLPVMKMEPLNQLQAVKNNIDVYF SCLIPLNLFVEDGKMERQVFLAT
 WKDIPNENELQFQIKECHLNADTVSSKLNQNNVYTI AKRNVGQDMLYQSLKLTNGIWILAE LRIQPGNP
 NYTLSLK CRAPEVSQYIYQVYDSILKN

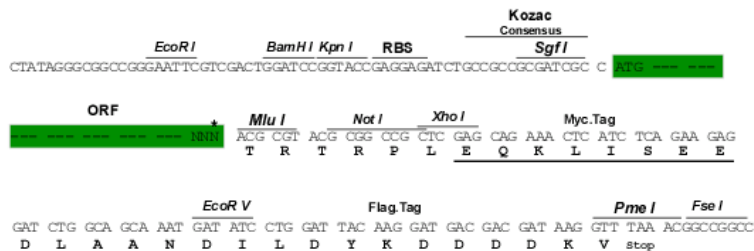
TRTRPLEQKLISEEDLAANDILDYKDDDDKV

Chromatograms: https://cdn.origene.com/chromatograms/mk6687_g12.zip

Restriction Sites: SgfI-MluI

Cloning Scheme:

Cloning sites used for ORF Shuttling:



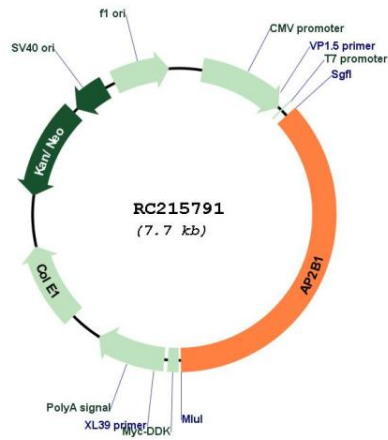
* The last codon before the Stop codon of the ORF

ACCN: NM_001282

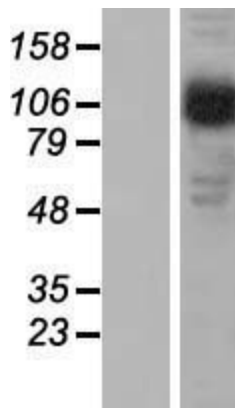
ORF Size: 2811 bp

OTI Disclaimer:	The molecular sequence of this clone aligns with the gene accession number as a point of reference only. However, individual transcript sequences of the same gene can differ through naturally occurring variations (e.g. polymorphisms), each with its own valid existence. This clone is substantially in agreement with the reference, but a complete review of all prevailing variants is recommended prior to use. More info
OTI Annotation:	This clone was engineered to express the complete ORF with an expression tag. Expression varies depending on the nature of the gene.
Components:	The ORF clone is ion-exchange column purified and shipped in a 2D barcoded Matrix tube containing 10ug of transfection-ready, dried plasmid DNA (reconstitute with 100 ul of water).
Reconstitution Method:	<ol style="list-style-type: none"> 1. Centrifuge at 5,000xg for 5min. 2. Carefully open the tube and add 100ul of sterile water to dissolve the DNA. 3. Close the tube and incubate for 10 minutes at room temperature. 4. Briefly vortex the tube and then do a quick spin (less than 5000xg) to concentrate the liquid at the bottom. 5. Store the suspended plasmid at -20°C. The DNA is stable for at least one year from date of shipping when stored at -20°C.
Note:	Plasmids are not sterile. For experiments where strict sterility is required, filtration with 0.22um filter is required.
RefSeq:	NM_001282.3
RefSeq Size:	5730 bp
RefSeq ORF:	2814 bp
Locus ID:	163
UniProt ID:	P63010
Cytogenetics:	17q12
Domains:	Armadillo_seg, Adaptin_N, Alpha_adaptinC2
Protein Families:	Druggable Genome
Protein Pathways:	Endocytosis, Huntington's disease
MW:	104.4 kDa
Gene Summary:	The protein encoded by this gene is one of two large chain components of the assembly protein complex 2, which serves to link clathrin to receptors in coated vesicles. The encoded protein is found on the cytoplasmic face of coated vesicles in the plasma membrane. Two transcript variants encoding different isoforms have been found for this gene. [provided by RefSeq, Jul 2008]

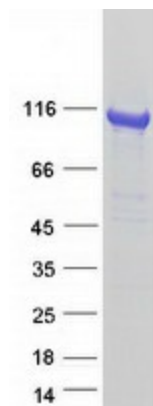
Product images:



Circular map for RC215791



Western blot validation of overexpression lysate (Cat# [LY420031]) using anti-DDK antibody (Cat# [TA50011-100]). Left: Cell lysates from untransfected HEK293T cells; Right: Cell lysates from HEK293T cells transfected with RC215791 using transfection reagent MegaTran 2.0 (Cat# [TT210002]).



Coomassie blue staining of purified AP2B1 protein (Cat# [TP315791]). The protein was produced from HEK293T cells transfected with AP2B1 cDNA clone (Cat# RC215791) using MegaTran 2.0 (Cat# [TT210002]).