

Product datasheet for RC215788

QK1 (QKI) (NM_206855) Human Tagged ORF Clone

Product data:

Product Type:	Expression Plasmids
Product Name:	QK1 (QKI) (NM_206855) Human Tagged ORF Clone
Tag:	Myc-DDK
Symbol:	QK1
Synonyms:	Hqk; hqkl; QK; QK1; QK3
Mammalian Cell Selection:	Neomycin
Vector:	pCMV6-Entry (PS100001)
E. coli Selection:	Kanamycin (25 ug/mL)
ORF Nucleotide Sequence:	>RC215788 representing NM_206855 Red=Cloning site Blue=ORF Green=Tags(s)

TTTTGTAATACGACTCACTATAGGGCGGCCGGAATTCGTCGACTGGATCCGGTACCGAGGAGATCTGCC
GCC**CGATCGCC**

ATGGTCGGGAAATGAAACGAAGGAGAAGCCGAAGCCCACCCAGATTACCTGATGCAGCTGATGAACG
ACAAGAAGCTCATGAGCAGCCTGCCAACTTCTGCGGGATCTTCAACCACCTCGAGCGGCTGCTGGACGA
AGAAATTAGCAGAGTACGGAAAGACATGTACAATGACACATTAATGGCAGTACAGAGAAAAGGAGTGCA
GAATTGCCTGATGCTGTGGGACCTATTGTTCAAGGAACTTTATGTGCCTGTAAAAGAATACC
CAGATTTAATTTGTTGGGAGAATCCTTGGACCTAGAGGACTTACAGCCAAACAACCTTGAAGCAGAAAC
CGGATGTAAAATCATGGTCCGAGGCAAAGGCTCAATGAGGGATAAAAAAAGGAGGAGCAAATAGAGGC
AAGCCCAATTGGGAGCATCTAAATGAAGATTTACATGTAATCACTGTGGAAGATGCTCAGAACAGAG
CAGAAATCAAATTGAAGAGAGCAGTTGAAGAAGTGAAGAAATTATTGGTACCTGCAGCAGAAGGAGAAGA
CAGCCTGAAGAAGATGCAGCTGATGGAGCTTGGCATTCTGAATGGCACCTACAGAGATGCCAACATTA
TCACCAGCCCTTGCCCTTTCTCTTGAGCAACAGCCAGGCTGCTCAAGGATCATTACTGGGCTGCGC
CGGTTCTCCACAGCTGCCCTGCGTACTCCTACGCCAGCTGGCCCTACCATAATGCCTTGATCAGACA
AATACAGACCGCTGTATGCCAAACGGAACCTCACCACCTGCTGCAATAGTTCTCCAGGGCCCGAA
GCTGGTTAATCTATACCCCTATGAGTACCCCTACACATTGGCACCAGCTACATCAATCCTTGAGTATC
CTATTGAACCTAGTGGTATTAGGTAAGTTCTTCTCCCATGGGGT

ACGCGTACGCGGCCGCTCGAGCAGAAACTCATCTCAGAAGAGGATCTGGCAGCAAATGATATCCTGGATT
ACAAGGATGACGACGATAAGGTTTAA



[View online »](#)

Protein Sequence: >RC215788 representing NM_206855
Red=Cloning site Green=Tags(s)

MVGEMETKEKPKPTPDYLMQLMNDKKLMSSLPNFCGIFNHLERLLDEEISRVKDMYNDTLNGSTEKRSA
 ELPDAVGPIVQLQEKL YYPVKEYPDFNFVGRILGPRGL TAKQLEAETGCKIMVRGKGSMDKKKEEQNRG
 KPNWEHLNEDLHVLITVEDAQNRAEIKLKRAVEEVKLLVPAAEGEDSLKMKMLMELAILNGTYRDANIK
 SPALAFSLAATAQAAPRIITGPAPVLPAAALRTPTPAGPTIMPLIRIQIQTAVMPNGTPHPTAAIVPPGPE
 AGLIYTPYEYPYTLAPATSILEYPIEPSVGLGKFFSPWG

TRTRPLEQKLISEEDLAANDILDYKDDDDKV

Chromatograms: https://cdn.origene.com/chromatograms/mg2497_e01.zip

Restriction Sites: SgfI-MluI

Cloning Scheme:



ACCN: NM_206855

ORF Size: 957 bp

OTI Disclaimer: The molecular sequence of this clone aligns with the gene accession number as a point of reference only. However, individual transcript sequences of the same gene can differ through naturally occurring variations (e.g. polymorphisms), each with its own valid existence. This clone is substantially in agreement with the reference, but a complete review of all prevailing variants is recommended prior to use. [More info](#)

OTI Annotation: This clone was engineered to express the complete ORF with an expression tag. Expression varies depending on the nature of the gene.

Components: The ORF clone is ion-exchange column purified and shipped in a 2D barcoded Matrix tube containing 10ug of transfection-ready, dried plasmid DNA (reconstitute with 100 ul of water).

Reconstitution Method:

1. Centrifuge at 5,000xg for 5min.
2. Carefully open the tube and add 100ul of sterile water to dissolve the DNA.
3. Close the tube and incubate for 10 minutes at room temperature.
4. Briefly vortex the tube and then do a quick spin (less than 5000xg) to concentrate the liquid at the bottom.
5. Store the suspended plasmid at -20°C. The DNA is stable for at least one year from date of shipping when stored at -20°C.

Note: Plasmids are not sterile. For experiments where strict sterility is required, filtration with 0.22um filter is required.

RefSeq: [NM_206855.3](#)

RefSeq Size: 7919 bp

RefSeq ORF: 960 bp

Locus ID: 9444

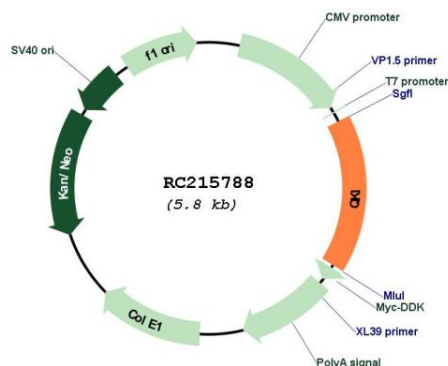
UniProt ID: [Q96PU8](#)

Cytogenetics: 6q26

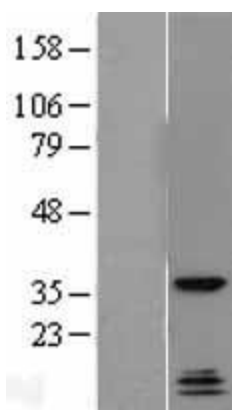
MW: 35.1 kDa

Gene Summary: The protein encoded by this gene is an RNA-binding protein that regulates pre-mRNA splicing, export of mRNAs from the nucleus, protein translation, and mRNA stability. The encoded protein is involved in myelination and oligodendrocyte differentiation and may play a role in schizophrenia. Multiple transcript variants encoding different isoforms have been found for this gene. [provided by RefSeq, Jul 2014]

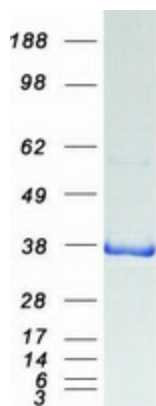
Product images:



Circular map for RC215788



Western blot validation of overexpression lysate (Cat# [LY403718]) using anti-DDK antibody (Cat# [TA50011-100]). Left: Cell lysates from untransfected HEK293T cells; Right: Cell lysates from HEK293T cells transfected with RC215788 using transfection reagent MegaTran 2.0 (Cat# [TT210002]).



Coomassie blue staining of purified QKI protein (Cat# [TP315788]). The protein was produced from HEK293T cells transfected with QKI cDNA clone (Cat# RC215788) using MegaTran 2.0 (Cat# [TT210002]).