

## Product datasheet for **RC215778**

### **MATN1 (NM\_002379) Human Tagged ORF Clone**

#### **Product data:**

Product Type:	Expression Plasmids
Product Name:	MATN1 (NM_002379) Human Tagged ORF Clone
Tag:	Myc-DDK
Symbol:	MATN1
Synonyms:	CMP; CRTM
Mammalian Cell Selection:	Neomycin
Vector:	pCMV6-Entry (PS100001)
E. coli Selection:	Kanamycin (25 ug/mL)



[View online »](#)

**ORF Nucleotide Sequence:**

>RC215778 representing NM\_002379  
 Red=Cloning site Blue=ORF Green=Tags(s)

TTTTGTAATACGACTCACTATAGGGCGGCCGGAATTCGTCGACTGGATCCGGTACCGAGGAGATCTGCC  
 GCC**CGGATCGCC**

ATGAGGGTCTCTCTGGCACTAGCCTCATGCTCTGCAGCCTGCTGCTGCTCCAGGCCCTGTGCAGCC  
 CTGGCCTCGCCCCCAGTCCAGAGGCCATCTCTGCCGGACGCGGCCACAGACCTGGTGTGGTGTGCGA  
 CAGCTCTCGCAGCGTTCGGCCTGTTGAATTTGAGAAAGTGAAGGTATTCTGTCCAGGTCATCGAGTCG  
 CTGGACGTGGGGCCAATGCCACCCGGGTGGGCATGGTCAACTATGCCAGCACCGTGAAGCAGGATTCT  
 CGCTGCGGGCTCATGTCTCAAGGCCGACTGCTGCAGGCTGTGCGCCGTATCCAGCCGCTGTCCACAGG  
 CACCATGACCGGCTGGCCATCCAGTTCGCTATCACAAAGCCTTCGGCGATGCAGAGGGTGGTCTGTCC  
 AGGTCCCCTGACATCAGCAAGTGGTTCATCGTGGTGACAGACGGGAGGCCCCAGGACAGCGTGCAGGACG  
 TGTCTGCGCGGGCCCGGCCAGCGGCTCGAGCTGTTCCGCATCGGAGTGGCAGCGTGGACAAGGCCAC  
 GCTGCGGCAGATGCCAGCGAGCCGAGGACGAACACGTCGATTACGTGGAGAGCTACAGCGTCATCGAG  
 AAGCTGTCCAGGAAGTTCAGGAGGCCCTTCTGCGTGGTGTGAGACCTGTGCGCCACAGGGGACCATTGACT  
 GTGAGCAGGTGTGCATCAGCTCCCCGGTTCCTACACCTGCGCCTGCCACGAGGGCTTCACTCTGAACAG  
 CGACGGCAAGACCTGCAATGTCTGCAGTGGTGGTGGTGGCAGCTCGGCCACTGACCTGGTCTTCTCATT  
 GACGGATCCAAGAGTGTGAGGCCAGAGAACTTTGAGCTGGTGAAGAAGTTCATCAGTCAGATCGTGGATA  
 CGCTGGACGTGTGAGACAAGCTGGCCCAGGTGGGGCTGGTGCAGTACTCAAGCTCTGTGCGCCAGGAGTT  
 CCCCTGGGTGCTTCCACCAAGAAGGACATCAAGCGGCTGTGCGGAATATGTCTACATGGAGAAG  
 GGCACAATGACTGGGGCTGCTCTCAAGTACCTCATTGACAATTCCTTCACTGTGCCAGTGGGGCTAGGC  
 CCGGGGCCAAGAAGGTGGGCATTGTCTCACTGATGGCCGGAGCCAGGACTACATTAATGATGCTGCCAA  
 GAAGGCCAAAGACCTCGGCTTTAAGATGTTTCTGCTGGTGTGGCAATGCCGTGGAGGATGAGTGAAG  
 GAAATAGCCTCAGAGCCTGTGGCAGAGCACTACTTCTACACGGCTGACTTCAAGACCATCAACCAGATAG  
 GCAAGAAGTTGCAGAAGAAGATCTGTGTGGAGGAAGACCCGTGTGCCTGCGAGTCCCTGGTAAAATTCCA  
 AGCCAAAGTGGAGGGGCTGCTGCAGGCCCTGACCAGGAACTGGAAGCTGTGAGTAAAGCGGCTGGCCATC  
 CTGGAGAACACAGTTGTC

**ACGCGT**ACGCGGCCGCTCGAGCAGAACTCATCTCAGAAGAGGATCTGGCAGCAAATGATATCTGGATT  
 ACAAGGATGACGACGATAAGGTTTAA

**Protein Sequence:**

>RC215778 representing NM\_002379  
 Red=Cloning site Green=Tags(s)

MRVLSGTSMLCSLLLLLQALCSPGLAPQSRGHLCRTRPTDLVFVVDSSRSVRPVEFEKVKVFLSQVIES  
 LDVGNATRVGMVNYASTVKQEFSLRAHVSKAALLQAVRRIQPLSTGMTGLAIQFAITKAFGDAEGGRS  
 RSPDISKVVIVTDGRPQDSVQDVSARARASGVELFAIGVGSVDKATLRQIASEPQDEHVDYVESYSVIE  
 KLSRKFQEAFCVVDLCATGDHDCEQVCISSPGSYTCACHEGFTLNSDGKTCNVCSGGGSSATDLVFLI  
 DGSKSVRPENFELVKKFISQIVDTLDVSDKLAQVGLVQYSSSVRQEFPLGRFHTKKDIKAAVRNMSYMEK  
 GTMTGAALKYLIDNSFTVSSGARPGAQKVGIVFTDGRSQDYINDAAKKAKDLGFKMFAVGVGNAVEDEL  
 EIASEPVAEHYFYTADFKTINQIGKKLQKKICVEEDPCACESLVKFQAKVEGLLQALTRKLEAVSKRLAI  
 LENTVV

**TRTRPLEQKLI**SEEDLAANDILDYKDDDDKV

**Chromatograms:**

[https://cdn.origene.com/chromatograms/mk8028\\_g06.zip](https://cdn.origene.com/chromatograms/mk8028_g06.zip)

**Restriction Sites:**

Sgfl-Mlul

**Cloning Scheme:**


**ACCN:** NM\_002379

**ORF Size:** 1488 bp

**OTI Disclaimer:** The molecular sequence of this clone aligns with the gene accession number as a point of reference only. However, individual transcript sequences of the same gene can differ through naturally occurring variations (e.g. polymorphisms), each with its own valid existence. This clone is substantially in agreement with the reference, but a complete review of all prevailing variants is recommended prior to use. [More info](#)

**OTI Annotation:** This clone was engineered to express the complete ORF with an expression tag. Expression varies depending on the nature of the gene.

**Components:** The ORF clone is ion-exchange column purified and shipped in a 2D barcoded Matrix tube containing 10ug of transfection-ready, dried plasmid DNA (reconstitute with 100 ul of water).

**Reconstitution Method:**

1. Centrifuge at 5,000xg for 5min.
2. Carefully open the tube and add 100ul of sterile water to dissolve the DNA.
3. Close the tube and incubate for 10 minutes at room temperature.
4. Briefly vortex the tube and then do a quick spin (less than 5000xg) to concentrate the liquid at the bottom.
5. Store the suspended plasmid at -20°C. The DNA is stable for at least one year from date of shipping when stored at -20°C.

**RefSeq:** [NM\\_002379.3](#), [NP\\_002370.1](#)

**RefSeq Size:** 2414 bp

**RefSeq ORF:** 1491 bp

**Locus ID:** 4146

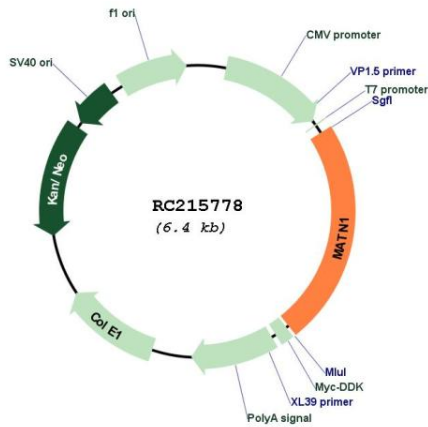
**UniProt ID:** [P21941](#)

**Cytogenetics:** 1p35.2

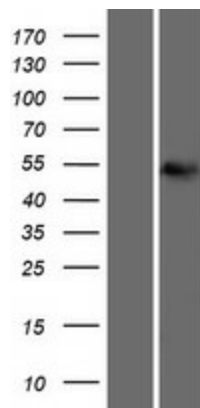
**MW:** 53.5 kDa

**Gene Summary:** This gene encodes a member of von Willebrand factor A domain containing protein family. This family of proteins are thought to be involved in the formation of filamentous networks in the extracellular matrices of various tissues. Mutations of this gene have been associated with variety of inherited chondrodysplasias. [provided by RefSeq, Jul 2008]

**Product images:**



Circular map for RC215778



Western blot validation of overexpression lysate (Cat# [LY419364]) using anti-DDK antibody (Cat# [TA50011-100]). Left: Cell lysates from untransfected HEK293T cells; Right: Cell lysates from HEK293T cells transfected with RC215778 using transfection reagent MegaTran 2.0 (Cat# [TT210002]).