

Product datasheet for RC215776

KDM2B (NM_001005366) Human Tagged ORF Clone

Product data:

Product Type:	Expression Plasmids
Product Name:	KDM2B (NM_001005366) Human Tagged ORF Clone
Tag:	Myc-DDK
Symbol:	KDM2B
Synonyms:	CXXC2; Fbl10; FBXL10; JHDM1B; PCCX2
Mammalian Cell Selection:	Neomycin
Vector:	pCMV6-Entry (PS100001)
E. coli Selection:	Kanamycin (25 ug/mL)
ORF Nucleotide Sequence:	>RC215776 representing NM_001005366 Red=Cloning site Blue=ORF Green=Tags(s)

TTTTGTAATACGACTCACTATAGGGCGCCGGGAATTCGTCGACTGGATCCGGTACCGAGGAGATCTGCC
GCC**CGATCGCC**

ATGGAGGCAGAGAAAGACTCTGGAAGAAGATTGCGCCCGATTGACCGCCAGCGATACGACGAGAACGAGG
ACTTGTCCGACGTGGAGGAGATCGTCAGCGTCCGCGGCTTCAGCCTGGAGGAGAAGCTTCGACGCCAGCT
GTACCAGGGGACTTCGTGCACGCCATGGAGGGCAAAGATTTCAACTATGAGTACGTACAGAGAGAAGCT
CTCAGGGTCCCCTGATATTTGAGAAAAGGATGGACTGGGAATTAAGATGCCTGACCCTGATTTACAG
TCCGAGACGTCAAACCTAGTGGGAGCCGGCGCTTGTGGACGTGATGGATGTGAACACCCAGAAGGG
CACGGAGATGAGCATGTCCAGTTTGTGCGTACTACGAGACGCCGAGGCCAGCGGGACAAGCTGTAC
AACGTCATCAGCCTAGAGTTCAGCCACACCAAGCTGGAGCACTTGGTCAAGCGTCCGACTGTGGTAGACC
TGGTGGACTGGGTGGACAACATGTGGCCCCAGCATCTGAAGGAGAAGCAGACAGAAGCCACGAACGCCAT
TGCAGAGATGAAGTACCCGAAAGTGAAAAGTACTGTCTGATGAGCGTGAAAGGTTGTTTACCGACTTC
CACATCGACTTTGGAGGCACTTCCGTTTGGTACCATGTTTTCCGGGTGGGAAGATTTTTGGCTGATTC
CTCCAACGCTGCACAATTTGGCGCTGTACGAGGAGTGGGTGCTGTGAGGCAACAGAGTGACATCTTTCT
GGGAGACCGTGTGGAACGATGCCAAAGAATTGAGCTGAAGCAGGGCTACACATTTTTTCATCCCTCCGGT
TGGATCCATGCCGTCTACACCCCTGTAGACTCTTGGTGTTCGGCGAAACATCTGCACAGCTTTAAGC
TGCCCATGCAGCTGCGGATCTACGAGATCGAGGACAGGACGCGGGTGCAGCCAAATTCGTTACCCCTT
CTACTATGAGATGTGCTGGTATGTCTGGAGAGATACGTGACTGTGTGACCCAGCGCTCCACCTCACT
CAGGAATACCAGAGGGAGTCGATGCTTATTGATGCCCCGAGGAAGCCAGCATAGACGGCTTCTCTTCGG
ATTCTGGCTGGAGATGGAGGAGGAGGCTGTGATCAGCAGCCTCAGGAGGAGGAGGAGAAGGACGAGGA
GGGCGAGGGCAGGGACAGGGCACCCAAACCGCCACCGATGGCTCCACTTACCCACCAGCACGCCCTCT
GAGGACCAGGAGGCCCTCGGAAGAAGCCAAAGCACCTGCCCTGCGATTCTCAAAGGACTTTGTCTA
ATGAGTCGGAGGAAAGTGTGAAGTCCACCACATGGCCGTAGACTACCCAAAGACCCCAACCGGCTCC
CGCCACGGAGTCTCTGCCAAATGGACCATCTCACTGAGTTTGAAGTGAAGGGCTGAAAGCTCTGGT



[View online >](#)

GAGAACTGGAATCCCTCCCGGAGAACAAGAAGTGTGTCCCGAGGGCATCGAGGACCCCAAGGCACTCC
TGGAGGGTGTGAAGAACGTCTGAAGGAGCACGCAGATGATGACCCTAGTCTGGCCATCACTGGGGTCCC
TGTGGTGACTIONGGCCAAAGAAGACTCCAAGAACCAGGGCTGTGGGTGGCCCAAGGGGAAGCTGGGCCCC
GCCTCCGCGGTGAAGTTGGCCGCCAACCCGGACAACGGCAGGAGCTCGGCGGCGCCGGACGCGATGCCGCA
AGTGGCAGGCTGCCTGCGGACCGAGTGGGAGAGTGCCACTTCTGCAAGGACATGAAGAAGTTCGGGGG
CCCCGGGCGCATGAAGCAGAGCTGCATCATGCGGCAGTGCATCGCGCCAGTGTGCCCCACACCCGCGTG
TGCCCTTGTGTGGCGAGGCGGGGAAGGAAGACACGGTGAAGAGGAGGAAGGCAAGTTAACCTCATGC
TCATGGAGTGCTCCATCTGCAATGAAATCATCCACCCTGGATGCCTTAAGATTAAGGAGTCAGAGGGTGT
GGTCAACGACGAGCTTCCAAACTGCTGGGAGTGTCCGAAGTGTAAACCACCGCCGGAAGACCGGAAACAA
AAGCGTGGCCCTGGCTTTAAGTACGCCTCCAACCTGCCCGGCTCCCTGCTCAAGGAGCAGAAGATGAACC
GGGACAACAAGGAAGGGCAGGAACCTGCCAAGCGGAGGAGTGAAGTGTGAGGAGGCGCCCCGGCGCAGGTC
GGATGAGCACTCGAAGAAGGTGCCCGCGGACGGCCTTCTGCGCAGAAAGTCTGACGACGTGCACCTGAGG
AAGAAGCGGAAATACGAGAAGCCCCAGGAGCTGAGTGGACGCAAGCGGCTCAAACCTGGCAAAGAAGATA
AGCTTTTCAGGAAAAAGCGGCGGTCTGGAAGAACGCCGAGGACCGCATGGCGCTGGCCAAACAGCCCT
CCGGCGCTTCAAGCAGGAACCCGAGGACGAAGTCCCGAGGCGCCCCCAAGACCAGGGAGAGCGACCAC
TCCCGCTCCAGCTCCCCACCGCGGACCCAGCACCGAAGGGGGCCGAGGGCCCGGAGGAGAAGAAGAGG
TGAAGATGCGCCGGAAGCGGCGGCTTCCCAACAAGGAGCTGAGCAGGGAGCTGAGCAAGGAGCTCAACCA
CGAGATCCAGAGGACGGAGAACAGCCTGGCCAACGAGAACCAGCAGCCATCAAGTCGGAGCCTGAGAGC
GAGGGCGAGGAGCCAAAGCGGCCCCCGGCATCTGCGAGCGTCCCACCGCTTACGAAGGGGCTCAACG
GCACCCCCCGGGAGCTGCGGCACCAGCTGGGGCCAGCCTGCGCAGCCCGCCCCGTGTACTCTCCCGGCC
CCCACCTCCGTGTCGCCGCCAAGTGTATCCAGATGGAGCGCCATGTGATCCGGCCACCCCCATCAGC
CCCCCGCTGACTCGCTACCCCTGGACGATGGGCAGCCACGTCATGCACAGGGAGGTGGATGGCCG
TCTTCAGCTACCTCAGCCACCAAGACTGTGTGTGTGCATGCGGGTCTGCAGGACCTGGAACCGTGGTG
CTGCGATAAGCGGTTGTGGACCCGATTGACCTGAACCACTGCAAGTCTATCACACCCCTGATGCTGAGT
GGCATCATCCGGCGACAGCCGCTCTCCCTCGACCTCAGCTGGACCAATATCTCCAAGAAGCAGCTGAGCT
GGCTCATCAACCGGCTGCCTGGGCTCCGGGACTTGGTGTGTGTCAGGCTGCTCATGGATCGCGGTCTCGGC
CCTTTCAGCTCCAGTTGTCCGCTGCTCCGACCCCTGGATGTCCAGTGGGTGGAGGGACTAAAGGATGCC
CAGATGCGGGATCTCCTGTCCCCGCCACAGACAACAGGCCAGGTGAGTGGACAATCGGAGCAAGCTCC
GGAACATCGTGGAGCTGCGCCTGGCAGGCTGGACATCACAGATGCCTCCCTGCGGCTCATCATCCGCCA
CATGCCCTGCTCTCAAGCTCCACCTCAGTTACTGTAACCACGTCACCGACCAGTCTATCAACCTGCTC
ACTGCTGTGGCACCACCACCCGAGACTCCTTAACCGAGATCAACCTGTCTGACTGCAATAAGGTCACTG
ATCAGTGCCTGTCTTCTCAAACGCTGTGGAACATCTGTATATTGACCTGAGGTAAGTCAAGCAAGT
CACCAAGGAAGGCTGTGAGCAGTTCATAGCCGAGATGTCTTCTTCCAAGGGAGAAGCTGTTCAACCACC
CGTTTGGGGGATGAG

ACGCGTACGCGGCCGCTCGAGCAGAACTCATCTCAGAAGAGGATCTGGCAGCAATGATATCCTGGATT
ACAAGGATGACGACGATAAGGTTAA

Protein Sequence: >RC215776 representing NM_001005366
 Red=Cloning site Green=Tags(s)

```

MEAEKDSGRRLRPIDRQRYDENEDLSDVEEIVSVRGSLEEKLRSQLYQGDFVHAMEGKDFNYEYVQREA
LRVPLIFREKDG LGIKMPDPDF TVRDV KLLVGSRRLLVDVMDVNTQKGT EMSMSQF VRYEYTP EAQRDKLY
NVISLEFSHTKLEHLVKRPTVVDLVDWVDNMWPOHLKEKQTEATNAIAEMKYPKVKKYCLMSVKGCF TDF
HIDFGGTSVWYHVFRGGKIFWLIPPTLHNLALEYEHWL SGKQSDIFL GDRVERCQRIELKQGYTFFIPSG
WIHAVYTPVDSL VFGGNILHSFNVMQLRIYEIEDRTRVQPKFRYPFYEMCWYVLERVYVYCVTQRSHLT
QEYQRESMLIDAPRKPSIDGFS SDSWLEMEEEACDQPPQEEEEKDEEGEGRDRAPKPPTDGTSTPTSTPS
EDQEALGKKPKAPALRFLKRTL SNESEESVKSTTLAVDYPKTPTGSPATEVSAKWTHL TEFELKGLKALV
EKLESLENKKCVPEGIEDPQALLEGVKNVLKEHADDPSLAITGVPVVTWPKTKPNRAVGRPKGLGP
ASAVKLAANRTTAGARRRTRCRKCEACL RTECGECHFKDMKKFGPGRMKQSCIMRQCIAPVLPHTAV
CLVCGEAGKEDTVEEEGKFNLMLECSICNEIIHPGCLKIKESEGVVNDLPNCWECPKCNHAGKTGKQ
KRGPGFKYASNLPGSLLKEQKMNDRNKEGQEPAKRRSECEEAPRRRSDEHSKKVPPDGLLRKSDDVHLR
KKRKYEQPEL SGRKRLKPGKEDKLF RKKRRSWKNAEDRMALANKPLRRFKQEPEDLPEAPPKTRES DH
SRSSSPTAGPSTEGAEGPEEKVKMRRKRRLPNKELSREL SKELNHEIQR TENSLANENQPIKSEPE S
EGEEPKRPPGICERPHRF SKGLNGTPREL RHQLGPSLRSPPRVISRPPPSVSPKCIQMERHVIRPPPI S
PPDLSLPLDDGA AHVMHREVWMAVFSYLSHQDLCVCMRV CRTWNRWCCDKRLWTRIDLNHCKSITPLMLS
GIIRRPVSLDL SWTNISKKQLSWLINRLPGLRDLVLSGCSWIAVSALCSSCPLLRTLDVQWVEGLKDA
QMRDLLSPPTDNRP GQMDNRSKLRNIVELRLAGLDITDASRL IIRHMPLL SKLHLSYCNHVTDQSINLL
TAVGTTTRDSL TEINLSDCNKVTQCL SFFKRCGNICHIDLRYCKQVTKEGCEQF IAEMSSFQGRSCSTT
RLGDE
  
```

TRTRPLEQKLI SEEDLAANDILDYKDDDDKV

Chromatograms: https://cdn.origene.com/chromatograms/mk8115_d05.zip

Restriction Sites: SgfI-MluI

Cloning Scheme:

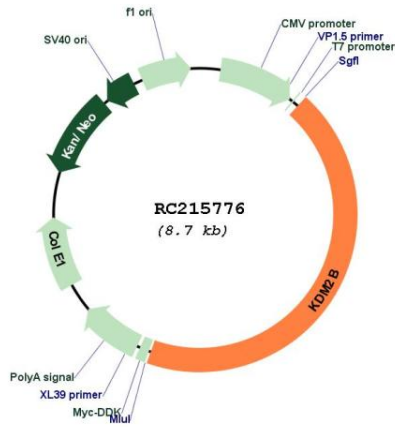


ACCN: NM_001005366

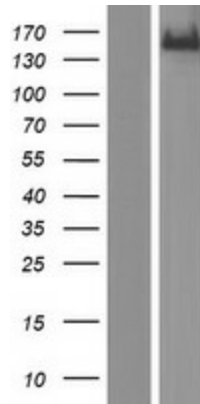
ORF Size: 3795 bp

OTI Disclaimer:	The molecular sequence of this clone aligns with the gene accession number as a point of reference only. However, individual transcript sequences of the same gene can differ through naturally occurring variations (e.g. polymorphisms), each with its own valid existence. This clone is substantially in agreement with the reference, but a complete review of all prevailing variants is recommended prior to use. More info
OTI Annotation:	This clone was engineered to express the complete ORF with an expression tag. Expression varies depending on the nature of the gene.
Components:	The ORF clone is ion-exchange column purified and shipped in a 2D barcoded Matrix tube containing 10ug of transfection-ready, dried plasmid DNA (reconstitute with 100 ul of water).
Reconstitution Method:	<ol style="list-style-type: none">1. Centrifuge at 5,000xg for 5min.2. Carefully open the tube and add 100ul of sterile water to dissolve the DNA.3. Close the tube and incubate for 10 minutes at room temperature.4. Briefly vortex the tube and then do a quick spin (less than 5000xg) to concentrate the liquid at the bottom.5. Store the suspended plasmid at -20°C. The DNA is stable for at least one year from date of shipping when stored at -20°C.
RefSeq:	NM_001005366.2
RefSeq Size:	5236 bp
RefSeq ORF:	3798 bp
Locus ID:	84678
UniProt ID:	Q8NHM5
Cytogenetics:	12q24.31
Protein Families:	Druggable Genome
MW:	144.6 kDa
Gene Summary:	This gene encodes a member of the F-box protein family which is characterized by an approximately 40 amino acid motif, the F-box. The F-box proteins constitute one of the four subunits of ubiquitin protein ligase complex called SCFs (SKP1-cullin-F-box), which function in phosphorylation-dependent ubiquitination. The F-box proteins are divided into 3 classes: Fbws containing WD-40 domains, Fbls containing leucine-rich repeats, and Fbxs containing either different protein-protein interaction modules or no recognizable motifs. The protein encoded by this gene belongs to the Fbls class. Multiple alternatively spliced transcript variants have been found for this gene, but the full-length nature of some variants has not been determined. [provided by RefSeq, Jul 2008]

Product images:



Circular map for RC215776



Western blot validation of overexpression lysate (Cat# [LY423701]) using anti-DDK antibody (Cat# [TA50011-100]). Left: Cell lysates from untransfected HEK293T cells; Right: Cell lysates from HEK293T cells transfected with RC215776 using transfection reagent MegaTran 2.0 (Cat# [TT210002]).