

Product datasheet for **RC215773**

PGRPL (PGLYRP2) (NM_052890) Human Tagged ORF Clone

Product data:

Product Type:	Expression Plasmids
Product Name:	PGRPL (PGLYRP2) (NM_052890) Human Tagged ORF Clone
Tag:	Myc-DDK
Symbol:	PGRPL
Synonyms:	HMFT0141; PGLYRPL; PGRP-L; PGRPL; tagL; tagL-alpha; tagL-beta; TAGL-like
Mammalian Cell Selection:	Neomycin
Vector:	pCMV6-Entry (PS100001)
E. coli Selection:	Kanamycin (25 ug/mL)



[View online »](#)

ORF Nucleotide Sequence:

>RC215773 representing NM_052890
 Red=Cloning site Blue=ORF Green=Tags(s)

TTTTGTAATACGACTCACTATAGGGCGGCCGGGAATTCGTCGACTGGATCCGGTACCGAGGAGATCTGCC
 GCC**CGGATCGCC**

ATGGCCCAGGGTGTCTCTGGATCTACTCGGATTGCTACTGTGGTCAGACCCAGGGACAGCCTCCCTGC
 CCCTGCTCATGGACTCTGTCATCCAGGCCCTGGCTGAGCTGGAGCAGAAAGTGCCAGCTGCCAAGACCAG
 ACACACAGCTTCTGCGTGGCTGATGTCAGCTCCAACTCTGGCCCCACAATCGCCTCTACCACTTCTCTG
 CTGGGGGCATGGAGCCTCAATGTACAGAGTTGGATCCCTGCCACTAAGCCAGAGCTGTTAGGCCTGA
 CCAAGGAGGTGGCCGACATGACGTACGAGAAGGGAAGGAATAAGGGTGGTGTGGCACCTGATGGCTC
 GACCGTGGCTGTGGAGCCTCTGCTGGCGGGGCTGGAGGCAGGGCTGCAAGGGCGCAGGGTCATAAATTTG
 CCCTTGGACAGCATGGCTGCCCTTGGGAGACTGGAGATACCTTTCCAGATGTTGTGGCCATTGCTCCAG
 ATGTAAGAGCCACCTCTCCAGGACTCAGGGATGGCTCTCCAGATGTCACCACTGCAGATATTGGAGC
 CAACACTCCAGATGCTACAAAAGGCTGTCCAGATGTCCAAGCTTCTTCCAGATGCCAAAGCCAAGTCC
 CCACCGACCATGGTGGACAGCCTCTGGCAGTCAACCTGGCTGGAAACCTGGGCCTGACCTTCTCCGAG
 GTTCCCAGACCCAGAGCCATCCAGACCTGGGAAGTGGGGCTGCTGGGACCAGCTCTCTGCCCTCGGAC
 CTTTACGCTTTTGGACCCCAAGGCATCTCTGTTAACCATGGCCTTCTCAATGGCGCCCTGGATGGGGTC
 ATCCTTGGAGACTACCTGAGCCGGACTCCTGAGCCCCGGCCATCCCTCAGCCACTTGTGAGCCAGTACT
 ATGGGGCTGGGGTGGCCAGAGACCCAGGGTCCCGAGCAACTCCGACGGCAGAACGGTGTCTGTCTGAC
 TTCAGCTCCATCCTGGCCAGCAGGTGTGGGGAACCTTGTCTTCTACAGAGGCTGGAGCCAGTACAC
 CTCCAGCTTCAGTGCATGAGCCAAGAACAGCTGGCCAGGTGGCTGCCAATGCTACCAAGGAATTCAGT
 AGGCCTTCTGGGATGCCCGGCCATCCACCCCGCTGCCGCTGGGAGCGGGCCCTTATCGGGCCGCCCC
 GAAGCTGCTGCAGCTGCCGCTGGGATTCTGTAGTGCATCACACCTACGTGCCTGCACCCACCTGCACG
 GACTTCACGCGCTGCGCAGCCAACATGCCTCCATGCAGCGCTACCACCAGGACACGCAAGGCTGGGGAG
 ACATCGGTACAGTTTCTGGTGGGCTCGGACGGCTACGTGTACGAGGGACGCGGCTGGCACTGGGTGGG
 CGCCACACGCTCGGCCACAACCTCCCGGGGCTTGGCGTGGCCATAGTGGGCAACTACCCGCGGCGCTG
 CCCACCGAGGCGCTCTGCGCACGGTGCAGCAGCTCCCGAGTTGTGCGGTGCGCGCCGGCTCTCTGC
 GGCCAGACTACGCGCTGTGGCCACCGCCAGCTGGTGCAGCCACTGCCCGGCGACGCGCTCTTCGA
 CCTGCTGCGCACCTGGCCGACTTACCCGCGACTGTTAAGCCAAGACCTGCCAGGAGTGTCTCTAAGAGA
 TCCAGGAGGGAGCCACCCCAAGGACCCTGCCAGCCACAGACTCCAA

ACGCGTACGCGGGCCGCTCGAGCAGAAACTCATCTCAGAAGAGGATCTGGCAGCAAATGATATCCTGGATT
 ACAAGGATGACGACGATAAGGTTTAA

Protein Sequence:

>RC215773 representing NM_052890
 Red=Cloning site Green=Tags(s)

MAQGVLLWILLGLLLWSDPGTASLPLLMDSVIQALAELEQKVPAAKTRHTASAWLMSAPNSGPHNRLYHFL
 LGAWSLNATELDPCLSPELLGLTKEVARHVDVREGKEYGVVLPDGGSTVAVEPLLAGLEAGLQGRRVINL
 PLDSMAAPWETGDTFPDVVAIAPDVRAITSSPLRDGSPDVTTADIGANTPDATKGCPCDVQASLPDAKAKS
 PPTMVDSLLAVTLAGNLGLTFLRGSQTQSHPDLTGEGCWDQLSAPRTFTLLDPKASLLTMAFLNGALDGV
 ILGDYL SRTPEPRPSLSHLLSQYYGAGVARDPGFRSNFRQNGAALTSASILAQQVWGTLLVLRLEPVH
 LQLQCMSQEQLAQVAANATKEFTEAFLGCPAIHPRCRWGAAPYRGRPKLLQLPLGFLYVHHTYVPAPPCT
 DFTRCAANMRSMQRYHQDTQGWGDI GYSFVVGSDGYVYEGRGWHWVGAHTLGHNSRFGVAIVGNYYAAL
 PTEAALRTVDRDTPSCAVRAGLLRPDYALLGHRQLVRTDCPGDALFDLLRTWPHFTATVKPRPARSVSKR
 SRREPPRTPATDLQ

TRTRPLEQKLISEEDLAANDILDYKDDDDKV

Chromatograms:

https://cdn.origene.com/chromatograms/mk6158_b03.zip

Restriction Sites:

Sgfl-Mlul

Cloning Scheme:



ACCN: NM_052890

ORF Size: 1728 bp

OTI Disclaimer: The molecular sequence of this clone aligns with the gene accession number as a point of reference only. However, individual transcript sequences of the same gene can differ through naturally occurring variations (e.g. polymorphisms), each with its own valid existence. This clone is substantially in agreement with the reference, but a complete review of all prevailing variants is recommended prior to use. [More info](#)

OTI Annotation: This clone was engineered to express the complete ORF with an expression tag. Expression varies depending on the nature of the gene.

Components: The ORF clone is ion-exchange column purified and shipped in a 2D barcoded Matrix tube containing 10ug of transfection-ready, dried plasmid DNA (reconstitute with 100 ul of water).

- Reconstitution Method:**
1. Centrifuge at 5,000xg for 5min.
 2. Carefully open the tube and add 100ul of sterile water to dissolve the DNA.
 3. Close the tube and incubate for 10 minutes at room temperature.
 4. Briefly vortex the tube and then do a quick spin (less than 5000xg) to concentrate the liquid at the bottom.
 5. Store the suspended plasmid at -20°C. The DNA is stable for at least one year from date of shipping when stored at -20°C.

RefSeq: [NM_052890.4](#)

RefSeq Size: 1901 bp

RefSeq ORF: 1731 bp

Locus ID: 114770

UniProt ID: [Q96PD5](#)

Cytogenetics: 19p13.12

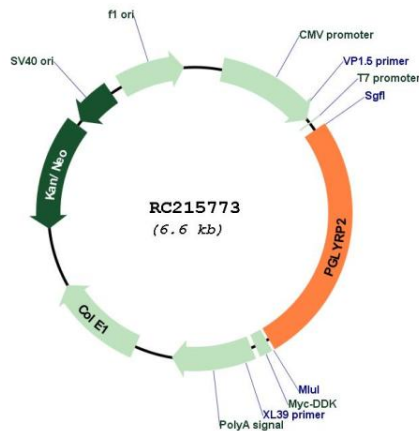
Domains: Ami_2, PGRP

Protein Families: Druggable Genome, Secreted Protein

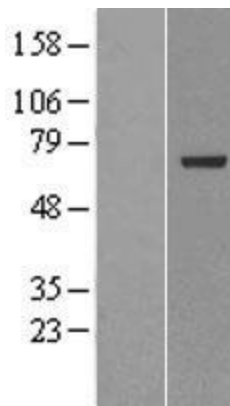
MW: 62 kDa

Gene Summary: This gene encodes a peptidoglycan recognition protein, which belongs to the N-acetylmuramoyl-L-alanine amidase 2 family. This protein hydrolyzes the link between N-acetylmuramoyl residues and L-amino acid residues in bacterial cell wall glycopeptides, and thus may play a scavenger role by digesting biologically active peptidoglycan into biologically inactive fragments. [provided by RefSeq, Sep 2011]

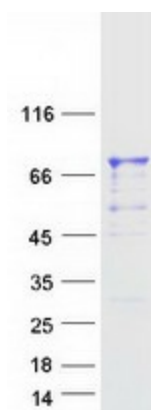
Product images:



Circular map for RC215773



Western blot validation of overexpression lysate (Cat# [LY403265]) using anti-DDK antibody (Cat# [TA50011-100]). Left: Cell lysates from untransfected HEK293T cells; Right: Cell lysates from HEK293T cells transfected with RC215773 using transfection reagent MegaTran 2.0 (Cat# [TT210002]).



Coomassie blue staining of purified PGLYRP2 protein (Cat# [TP315773]). The protein was produced from HEK293T cells transfected with PGLYRP2 cDNA clone (Cat# RC215773) using MegaTran 2.0 (Cat# [TT210002]).