

Product datasheet for RC215770

TET2 (NM_017628) Human Tagged ORF Clone

Product data:

Product Type:	Expression Plasmids
Product Name:	TET2 (NM_017628) Human Tagged ORF Clone
Tag:	Myc-DDK
Symbol:	TET2
Synonyms:	IMD75; KIAA1546; MDS
Mammalian Cell Selection:	Neomycin
Vector:	pCMV6-Entry (PS100001)
E. coli Selection:	Kanamycin (25 ug/mL)
ORF Nucleotide Sequence:	>RC215770 representing NM_017628 Red=Cloning site Blue=ORF Green=Tags(s)

TTTTGTAATACGACTCACTATAGGGCGGCCGGAATTCGTCGACTGGATCCGGTACCGAGGAGATCTGCC
GCCCGATCGCC

ATGGAACAGGATAGAACCAACCATGTTGAGGGCAACAGACTAAGTCCATTCCTGATACCATCACCTCCCA
TTTGCCAGACAGAACCTCTGGCTACAAAGCTCCAGAATGGAAGCCACTGCCTGAGAGAGCTCATCCAGA
AGTAAATGGAGACACCAAGTGGCACTCTTTCAAAGTTATTATGGAATACCCTGTATGAAGGGAAGCCAG
AATAGTCGTGTGAGTCTGACTTACACAAGAAAGTAGAGGGTATTCCAAGTGTTCGAAAATGGAGGAA
TAAAACGCACAGTTAGTGAACCTTCTCTCTCTGGGCTCCTTCAGATCAAGAAATTGAAACAAGACAAAA
GGCTAATGGAGAAAGACGTAACCTCGGGTAAGCCAAGAAAGAAATCCAGGTGAAAGCAGTCAACCAAA
GTCTCCGATTTGAGTGATAAGAAAGAATCTGTGAGTTCTGTAGCCCAAGAAAATGCGATTAAGATTTC
CCAGTTTTTCAACACATAACTGCAGTGGGCTGAAAATCCAGAGCTTCAGATTCTGAATGAGCAGGAGGG
GAAAAGTGCTAATTACCATGACAAGAACATTGTATTACTTAAAAACAAGGCAGTGCTAATGCCTAATGGT
GCTACAGTTTCTGCCTCTCCGTGGAACACACACATGGTGAACCTCTGAAAAAACACTGTCTCAATATT
ATCCAGATTGTGTTTCCATTGCGGTGCAGAAAACCACATCTCACATAAATGCCATTAACAGTCAGGCTAC
TAATGAGTTGTCTGTGAGATCACTCACCATCGCATACCTCAGGGCAGATCAATTCGCACAGACCTCT
AACTCTGAGCTGCCTCAAAGCCAGCTGCAGTGGTGAAGTGGTGTGATGCTGATGATGCTGATAATG
CCAGTAACTAGCTGCAATGCTAAATACCTGTTCTTTTCAGAAACCAGAACTACAACAACAAAAATC
AGTTTTTGAGATATGCCATCTCCTGCAGAAAATAACATCCAGGGAACCAAAAGCTAGCGTCTGGTGAA
GAATTCTGTTCCAGTTCAGCAGCAATTTGCAAGCTCCTGGTGGCAGCTCTGAACGGTATTTAAAAACAA
ATGAAATGAATGGTGCTTACTTCAAGCAAAGCTCAGTGTCACTAAGGATTCCTTTTCTGCCACTACCAC
ACCACCACCACATCACAATTGCTTCTTTCTCCCCCTCCTCTTCCACAGTTCTCAGTTCCTTCA
GAAGGAAAAGCACTCTGAATGGTGGAGTTTTAGAAGAACCACCACCTACCCCAACCAAGTAACACAA
CACTTTTAAGGGAAGTAAAATAGAGGGTAAACCTGAGGCACCACCTTCCAGAGTCTAATCCATCTAC
ACATGTATGCAGCCCTTCTCCGATGCTTCTGAAAGGCCCTCAGAATAATTGTGTGAACAGGAATGACATA



CAGACTGCAGGGACAATGACTGTTCCATTGTGTTCTGAGAAAACAAGACCAATGTGAGAACACCTCAAGC
ATAACCCACCAATTTTTGGTAGCAGTGGAGAGCTACAGGACAACCTGCCAGCAGTTGATGAGAAAACAAGA
GCAAGAGATTCTGAAGGGTCGAGACAAGGAGCAAAACACGAGATCTGTGCCCCCAACACAGCACTATCTG
AAACCAGGATGGATTGAATTGAAGGCCCTCGTTTTACCAAGCGGAATCCCATCTAAAACGTAATGAGG
CATCACTGCCATCAATTTCTCAGTATCAACCCAATCTCTCCAATCAAATGACCTCCAAAACAATACACTGG
AAATTC AACATGCCTGGGGGGCTCCCAAGGCAAGCTTACACCCAGAAAACAACACAGCTGGAGCACAAG
TCACAAATGTACCAAGTTGAAATGAATCAAGGGCAGTCCCAAGGTACAGTGGACCAACATCTCCAGTTCC
AAAAACCCTCACACCAGGTGCACCTTCTCCAAAACAGACCATTTACCAAAAAGCTCATGTGCAGTCACTGTG
TGGCACTAGATTTCAATTTCAACAAAGAGCAGATTCCCAAACGAAAACTTATGTCCCAAGTGTGAAA
CAGCACTGAATCAACAGGCTTCAGAGACTGAGCCATTTTCAAACCTCACACCTTTTGCAACATAAGCCTC
ATAAACAGGCAGCACAACACAACCATCCAGAGTTTACATCTCCCTCAAACCAGCAACAGCAGCAAAA
ATTACAAATAAAGAATAAAGAGGAAATACTCCAGACTTTTCTCACCCCAAGCAACAATGATCAGCAA
AGAGAAGGATCATTCTTTGGCCAGACTAAAGTGAAGAATGTTTTCATGGTGAAAATCAGTATTCAAAAT
CAAGCGAGTTGAGACTCATAATGTCCAAATGGGACTGGAGGAAGTACAGAATATAAATCGTAGAAATTC
CCCTTATAGTCAGACCATGAAATCAAGTGCATGCAAAAACAGGTTTCTGTTCAAAACAATACACACCTA
GTTTCAGAGAATAAAGAACAGACTACACATCCTGAACTTTTTGCAGGAAACAAGACCCAAAACCTTGATC
ACATGCAATATTTTCAAATAATGTGATCCCAAAGCAAGATCTTCTTACAGGTGCTTTCAAGAACAGGA
GCAGAAGTCACAACAAGCTTCAGTTCTACAGGGATATAAAAAATAGAAACCAAGATATGTCTGGTCAACA
GCTGCGCAACTTGCTCAGCAAAGGTAATGATACATAACCATGCAAAATGTTTTTCTGTGCTGACCAGG
GAGGAAGTCACACTCAGACCCCTCCCAAGGACACTCAAAGCATGCTGCTCTAAGGTGGCATCTCTT
ACAGAAGCAAGAACAGCAGCAAACACAGCAACCCCAAACCTGAGTCTTGCCATAGTCAGATGCACAGGCCA
ATTAAGGTGGAACCTGGATGCAAGCCACATGCCTGTATGCACACAGCACCACCAGAAAACAACATGGA
AAAAGGTAAC TAAGCAAGAGAATCCACCTGCAAGCTGTGATAATGTGCAGCAAAAGAGCATCATTGAGAC
CATGGAGCAGCATCTGAAGCAGTTTACGCCAAGTCGTTATTTGACCATAAGGCTCTTACTCTCAAATCA
CAGAAGCAAGTAAAAGTTGAAATGTGAGGGCCAGTCACAGTTTTGACTAGACAAACCACTGCTGCAGAAC
TTGATAGCCACACCCAGCTTTAGAGCAGCAAACAACCTCTTTCAGAAAAGACACCAACCAAAAAGAACAGC
TGCTTCTGTTCTCAATAATTTTATAGAGTCACCTTCAAATTAAGTACTCTATAAAAAATTTATTG
GATACACCTGTCAAGACTCAATATGATTTCCCATCTTGCAGATGTGTAGGTAAGTGCCAGAAATGTACTG
AGACACATGGCGTTTATCCAGAATTAGCAAATTTATCTTCAGATATGGGATTTTCTTCTTTTTT

ACGCGTACGCGGCCGCTCGAGCAGAACTCATCTCAGAAGAGGATCTGGCAGCAAATGATATCCTGGATT
ACAAGGATGACGACGATAAGGTTTAA

Protein Sequence: >RC215770 representing NM_017628
 Red=Cloning site Green=Tags(s)

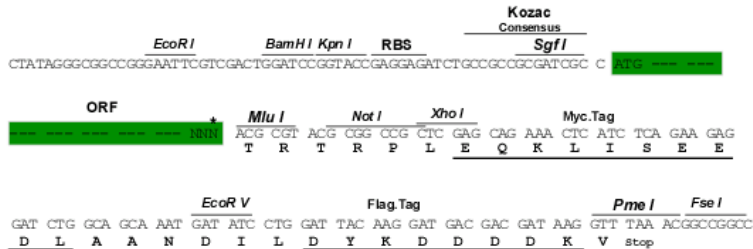
```
MEQDRTNHVEGNRLSPFLIPSPPICQTEPLATKLQNGSPLPERAHPEVNGDTKWHSEFKSYYGIPCMKGSQ
NSRVSPDFTQESRGYSKCLQNGGIKRTVSEPSLSGLLQIKKQKQKANGERRNFVGSQERNPGESSQPN
VSDLSDKKEVSVSVAQENAVKDFTSFSTHNCSGPENPELQILNEQEGKSANYHDKNIVLLKNKAVLMPNG
ATVSASSVEHTHGELLEKTL SQYYPDCVSI AVQKTTSHINAINSQATNELSCEITHPSHTSGQINSAQTS
NSELPPKPAAVVSEACDADDADNASKLAAMLNNTCSFQKPELQKQKSVFEICPSPAENNIQGTTKLASGE
EFCSGSSSNLQAPGSSERYLKQNEMNGAYFKQSSVFTKDSFSATTTPPPPSQQLLSPPPPLPQVPQLPS
EGKSTLNGGVLEEHHPYNSNTLLREVKIEGKPEAPPSQSPNPSTHVCSPSPMLSERPQNNCVRNDI
QTAGTMTVPLCSEKTRPMSEHLKHNPIFGSSGELQDNCQQLMRNKEQEILKGRDKEQTRDLVPPTQHYL
KPGWIELKAPRFHQAESHLKRNEASLPSILQYQPNLSNQMTSKQYTGNSNMPGGLPRQAYTKTTQLEHK
SQMYQVEMNQGQSGTVDQHLQFQKPSHQVHFSKTDHLPKAHVQSLCGTRFHFQQRADSQTEKLMSPVLK
QHLNQQASETEPFNSHLLQHKPHKQAAQTQPSQSSHLQNNQQQKQLQIKNKEEILQTFPHPQSNNDQQ
REGSFFGQTKVEECFHGENQYSKSEFETHNVQMGL EEVQINRRNSPYSQTMKSSACKIQVSCSNNTHL
VSENKEQTTPELFAGNKTQNLHMQYFPNNVPIKQDILLHRCFQEQEQKSSQASVLQGYKNRNDMSGQQ
AAQLAQRYL IHNHANVFPVPDQGSHTQTPPQKDTQKHAALRWHL LKQEQQQTQPQTESCHSQMHRP
IKVEPGCKPHACMHTAPPENKTWKVTKQENPPASCDNVQKSI IETMEQHLKQFHAKSLFDHKALTLKS
QKQVKVEMSGPVTVLTRQTTAAELDSHTPALEQQTTSSEKTPTKRTAASVLNFI ESPSKLLDTPIKNLL
DTPVKTYDFPSCRCVKGKQKCTETHGVPELANLSSDMGFSFFF
```

TRTRPLEQKLISEEDLAANDILDYKDDDDKV

Restriction Sites:
 Cloning Scheme:

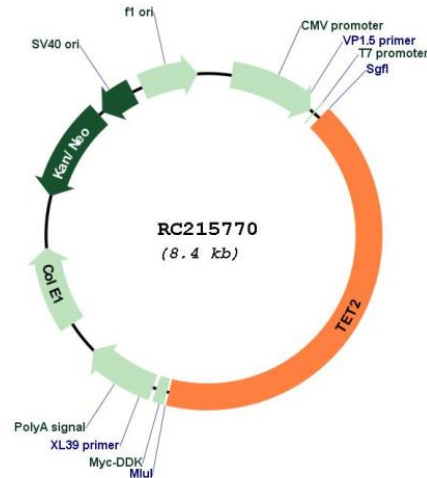
Sgfl-MluI

Cloning sites used for ORF Shuttling:



* The last codon before the Stop codon of the ORF

Plasmid Map:



ACCN: NM_017628

ORF Size: 3495 bp

OTI Disclaimer: The molecular sequence of this clone aligns with the gene accession number as a point of reference only. However, individual transcript sequences of the same gene can differ through naturally occurring variations (e.g. polymorphisms), each with its own valid existence. This clone is substantially in agreement with the reference, but a complete review of all prevailing variants is recommended prior to use. [More info](#)

OTI Annotation: This clone was engineered to express the complete ORF with an expression tag. Expression varies depending on the nature of the gene.

Components: The ORF clone is ion-exchange column purified and shipped in a 2D barcoded Matrix tube containing 10ug of transfection-ready, dried plasmid DNA (reconstitute with 100 ul of water).

Reconstitution Method:

1. Centrifuge at 5,000xg for 5min.
2. Carefully open the tube and add 100ul of sterile water to dissolve the DNA.
3. Close the tube and incubate for 10 minutes at room temperature.
4. Briefly vortex the tube and then do a quick spin (less than 5000xg) to concentrate the liquid at the bottom.
5. Store the suspended plasmid at -20°C. The DNA is stable for at least one year from date of shipping when stored at -20°C.

RefSeq: [NM_017628.4](#), [NP_060098.3](#)

RefSeq Size: 9236 bp

RefSeq ORF: 3498 bp

Locus ID: 54790

UniProt ID: [Q6N021](#)

Cytogenetics: 4q24

MW: 130.3 kDa

Gene Summary: The protein encoded by this gene is a methylcytosine dioxygenase that catalyzes the conversion of methylcytosine to 5-hydroxymethylcytosine. The encoded protein is involved in myelopoiesis, and defects in this gene have been associated with several myeloproliferative disorders. Two variants encoding different isoforms have been found for this gene. [provided by RefSeq, Mar 2011]