

Product datasheet for **RC215764**

SLC6A20 (NM_020208) Human Tagged ORF Clone

Product data:

Product Type:	Expression Plasmids
Product Name:	SLC6A20 (NM_020208) Human Tagged ORF Clone
Tag:	Myc-DDK
Symbol:	SLC6A20
Synonyms:	IMINO; SIT1; XT3; Xtrp3
Mammalian Cell Selection:	Neomycin
Vector:	pCMV6-Entry (PS100001)
E. coli Selection:	Kanamycin (25 ug/mL)



[View online »](#)

ORF Nucleotide Sequence:

>RC215764 ORF sequence
 Red=Cloning site Blue=ORF Green=Tags(s)

TTTTGTAATACGACTCACTATAGGGCGGCCGGGAATTCGTCGACTGGATCCGGTACCGAGGAGATCTGCC
 GCC**CGGATCGCC**

ATGGAGAAAGCGCGCCGCTGTGGGCCAACTCGCTACAGTTCGTGTTGCGCTGCATCTCGTACGCCGTGG
 GCCTGGGCAACGTGTGGGATTCCCGTACCTGTGCCAGATGTACGGCGGAGGTAGTTTCCTGGTCCCTA
 CATCATCATGCTTATCGTGGAGGAATGCCGCTTGTACCTGGAAGTGGCTGTGGGGCAGCGCATGCGG
 CAGGGCAGCATCGGCGCCTGGAGGACCATCAGCCCGTACCTCAGTGGTGTGCGGGTGCAGCGTGGTGG
 TCTCTTTCTTCTCTCCATGTAACAACGTATCAACGCCTGGGCTTCTGGTACCTCTTCCACTCCTT
 CCAGGATCCCCTGCCGTGGTCTGTCTGCCACTGAATGGTAACCACACGGGCTACGATGAGGAGTGCAG
 AAGGCGTCTCCACACAGTACTTCTGGTACAGGAAAACCTCAATATCTCGCCGTCCTCCAGGAGAACG
 GGGGTGTGACGTGGGAGCCGGCGCTGTGCCTCCTCTGGCCTGGTGGTGTACCTGTGCATCCTGCG
 TGGCACCGAGTCCACTGGCAAGTGGTGTATTTACGGCGTCACTGCCCTATTGCGTGTGCATCATCTAC
 CTATCAGGGGCCCTCACGCTCCACGGAGCCACCAATGGCCTCATGTACATGTTCACTCCCAAGATAGAGC
 AGCTGGCCAACCCCAAGGCTGGATCAATGCAGCCACCCAGATCTTCTTCTCACTTGGCCTGGGCTTCGG
 CAGCCTGATCGCCTTCGCCAGCTACAATGAGCCATCCAACAACCTGCCAGAAGCACGCCATCATCGTGCC
 CTCATCAACAGCTTACCTCCATATTTGCCAGCATTGTACCTTCTCCATCTATGGCTTCAAGGCCACCT
 TCAATTATGAAAACCTGCTTGAAGAAGGTGAGTCTGCTGCTGACCAACACTTTTGACCTTGAAGATGGCTT
 TTTGACAGCCAGCAACCTGGAGCAGGTGAAGGGTACCTCGCATCTGCCTACCAAGCAAATACAGCGAG
 ATGTTCCCGCAAATCAAAAACCTGCAGCTTGAATCGGAGCTAGACACGGCCGTCAGGGCACTGGCCTGG
 CATTCTCGTCTATACAGAGGCCATTA AAAACATGGAGTGTCCAGCTGTGGTGGTCTACTTCTT
 CATGCTGCTGATGCTGGGCATTGGGAGCATGCTGGGAACACAGCGGCCATCCTCACCCCTCTGACAGAC
 AGCAAGATCATCTCCAGCCACCTGCCAAGGAGGCCATCTCAGGTCTGGTGTGCCTGTCAACTGTGCCA
 TTGGCATGGTGTTCACGATGGAGGCTGGGAACACTGGTTTGACATATTCAACGACTACGCGCCCACT
 GTCCCTGCTGCTCATCGTGTGGTGGAGACGATTGCCGTGTGCTACGTGTACGGGCTGAGGAGATTTGAA
 AGTGACCTTAAGGCCATGACCGGCCGAGCTGTGAGCTGGTACTGGAAGGTGATGTGGGCTGGCGTAAAGCC
 CACTGTGATTGTGACGCTCTTTGTCTTCTACCTGAGCGACTACATCCTCACGGGACCCGTAAGTATCA
 AGCCTGGGACGCCTCCAGGGCCAGCTCGTGACCAAAGATTACCCGGCCTATGCACTGGTGTGCATCGGG
 CTGCTTGTGGCCTCCTCCACCATGTGCATCCCCCTGGCGGCCCTGGGGACTTTTGTTCAGCGTGCCTCA
 AGAGGGGAGACGCAGACCCCGTGCC

ACGCGTACGCGGCCGCTCGAGCAGAAACTCATCTCAGAAGAGGATCTGGCAGCAAATGATATCCTGGATT
 ACAAGGATGACGACGATAAGGTTTAA

Protein Sequence:

>RC215764 protein sequence
 Red=Cloning site Green=Tags(s)

MEKARPLWANSLQFVFACISYAVGLGNVWRFPYLCQMYGGGSFLVPYIIMLIVEGMPLLYLELAVGQRM
 QGSIGAWRTISPYL SGVGVASVVVSFFLSMYYNVINAWAFWYLFHSFQDPLPWSVCLPNGNHTGYDEECE
 KASSTQYFWYRKTNLNISPQLQENGGVQWEPALCLLLAWLVVYLCILRGTESTGKVVYFTASLPYCVLI
 LIRGLTLHGATNGLMYMFTPKIEQLANPKAWINAATQIFFSLGLGFGSLIAFASYNEPSNQCQKHAIVS
 LINSFTSIFASIVTFISIYGFKATFNENCLKKSLLL TNTFDLEDGFLTASNLEQVKGYLASAYPSKYSE
 MFPQIKNCSLESELDTAVQGTGLAFIVYTEAIKNMEVSQLWSVL YFFMLMLGIGSMLGNTAAIL TPLTD
 SKIISSHLPEAISGLVCLVNCAIGMVFTMEAGNYWFDIFNDYAATL SLLLIVL VETIACVYVYGLRRFE
 SDLKAMTGRAVSWYKVMWAGVSPLLIVSLFVYFLSDYILTGTLYKQAWDASQGLVTKDYPAYALAVIG
 LLVASSTMCIPLAALGTFVQRRLKRGDADPVA

TRTRPLEQKLI SEEDLAANDILDYKDDDDKV

Chromatograms:

https://cdn.origene.com/chromatograms/mk6608_g05.zip

Restriction Sites: SgfI-MluI

Cloning Scheme:



ACCN: NM_020208

ORF Size: 1776 bp

OTI Disclaimer: The molecular sequence of this clone aligns with the gene accession number as a point of reference only. However, individual transcript sequences of the same gene can differ through naturally occurring variations (e.g. polymorphisms), each with its own valid existence. This clone is substantially in agreement with the reference, but a complete review of all prevailing variants is recommended prior to use. [More info](#)

OTI Annotation: This clone was engineered to express the complete ORF with an expression tag. Expression varies depending on the nature of the gene.

Components: The ORF clone is ion-exchange column purified and shipped in a 2D barcoded Matrix tube containing 10ug of transfection-ready, dried plasmid DNA (reconstitute with 100 ul of water).

- Reconstitution Method:
1. Centrifuge at 5,000xg for 5min.
 2. Carefully open the tube and add 100ul of sterile water to dissolve the DNA.
 3. Close the tube and incubate for 10 minutes at room temperature.
 4. Briefly vortex the tube and then do a quick spin (less than 5000xg) to concentrate the liquid at the bottom.
 5. Store the suspended plasmid at -20°C. The DNA is stable for at least one year from date of shipping when stored at -20°C.

Note: Plasmids are not sterile. For experiments where strict sterility is required, filtration with 0.22um filter is required.

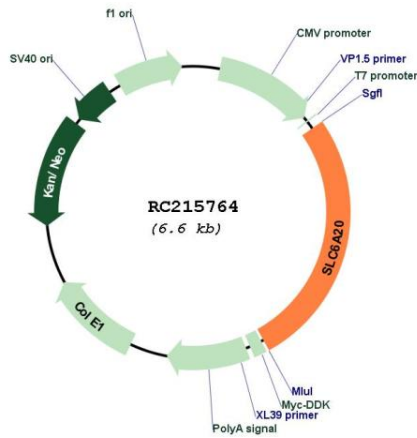
RefSeq: [NM_020208.4](#)

RefSeq Size: 5455 bp

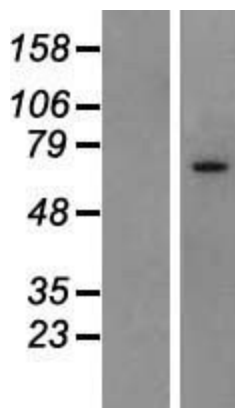
RefSeq ORF: 1779 bp

Locus ID: 54716
UniProt ID: [Q9NP91](#)
Cytogenetics: 3p21.31
Protein Families: Druggable Genome, Transmembrane
MW: 65.9 kDa
Gene Summary: Transport of small hydrophilic substances across cell membranes is mediated by substrate-specific transporter proteins which have been classified into several families of related genes. The protein encoded by this gene belongs to the sodium:neurotransmitter symporter (SNF) family and functions as a proline transporter expressed in kidney and small intestine. Mutations in this gene are associated with Hyperglycinuria and Iminoglycinuria. [provided by RefSeq, Jul 2020]

Product images:



Circular map for RC215764



Western blot validation of overexpression lysate (Cat# [LY412593]) using anti-DDK antibody (Cat# [TA50011-100]). Left: Cell lysates from untransfected HEK293T cells; Right: Cell lysates from HEK293T cells transfected with RC215764 using transfection reagent MegaTran 2.0 (Cat# [TT210002]).