

## Product datasheet for RC215760

### PSKH2 (NM\_033126) Human Tagged ORF Clone

#### Product data:

Product Type:	Expression Plasmids
Product Name:	PSKH2 (NM_033126) Human Tagged ORF Clone
Tag:	Myc-DDK
Symbol:	PSKH2
Mammalian Cell Selection:	Neomycin
Vector:	pCMV6-Entry (PS100001)
E. coli Selection:	Kanamycin (25 ug/mL)
ORF Nucleotide Sequence:	>RC215760 ORF sequence Red=Cloning site Blue=ORF Green=Tags(s)

TTTTGTAATACGACTCACTATAGGGCGGCCGGAATTCGTCGACTGGATCCGGTACCGAGGAGATCTGCCGCCGCGATCGCC

ATGGGGTGC GGCGCCAGCAGGAAGGTGGTCCCGGGGCCACCAGCGCTGGCTTGGGCCAAGCACGAAGGTC  
AAAACCAAGCCGGCGTCGGAGGCGCGGGCCCTGGGCCCGAGGCGGGCCAGGCGGCGCAGAGGATACA  
GGTGGCTCGCTCCGAGCCAAGTTCGACCCCGGGTCTTGCAGATATGACATCAAAGCTTTATTGGG  
ACAGGCAGTTTCAGCAGGTTGTGAGGGTAGAGCAGAAGACCACCAAGAACTTTTGAATAAAAGTGA  
TGGAAACCAGAGAGAGGGAAGGTAGAGAAGCGTGCCTGTCTGAGCTGAGCGTCTGCGGGCGGTTAGCCA  
TCGTTACATTGTCCAGCTCATGGAGATCTTTGAGACTGAGGATCAAGTTTACATGGTAATGGAGCTGGCT  
ACCGGAGGGGAGCTCTTTGATCGACTCATTGCTCAGGGATCCTTTACAGAGCGGGATGCCGTCAGGATCC  
TCCAGATGGTTGCTGATGGGATTAGGTATTTGCATGCGCTGCAGATAACTCATAGGAATCTAAAGCCTGA  
AAACCTCTTATACTATCATCCAGGTGAAGAGTCGAAAAATTTAATTACAGATTTTGGTTTGGCATACTCC  
GGGAAAAAAGTGGTACTGGACAATGAAGACTCTGTGGGACCCAGAGTACATAGCTCCTGAGGTTT  
TGCTAAGGAAGCCTTATACCAGTGCAGTGGACATGTGGGCTCTTGGTGTGATCACATATGCTTTACTTAG  
CGGATTCCTGCCTTTTGTGATGAAAGCCAGACAAGGCTTTACAGGAAGATTCTGAAAGGCAAATATAAT  
TATACAGGAGAGCCTTGCCAAGCATTTCCCACTTGGCGAAGGACTTTATAGACAACTACTGATTTTGG  
AGGCTGGTCATCGCATGTGAGCTGGCCAGGCCCTGGACCATCCCTGGGTGATCACCATGGCTGCAGGGTC  
TTCCATGAAGAATCTCCAGAGGGCCATATCCCGAAACCTCATGCAGAGGGCTCTCCCACTCTCAGAGT  
CCTGGATCTGCACAGTCTTCTAAGTACATTATTTCTCACAATCCAGGCATATGTGGAGCAAGAGAACT  
TAAGGATAGTAGAATCGCCACTGTCTGCCTTTTG

ACGCGTACGCGGCCGCTCGAGCAGAACTCATCTCAGAAGAGGATCTGGCAGCAAATGATATCCTGGATT  
ACAAGGATGACGACGATAAGGTTTAA



[View online »](#)

**Protein Sequence:** >RC215760 protein sequence  
 Red=Cloning site Green=Tags(s)

MGCGASRKVVPGPPALAWAKHEGQNQAGVGGAGPGPEAAAQAQR IQVARFRAKFDPRVLARYDIKALIG  
 TGSFSRVVRVEQKTTKKPFAIKVMETREREGREACVSEL SVLRRVSHRYIVQLMEIFETEDQVYVMELA  
 TGGELFDRLIAQGSF TERDAVRILQMVADGIRYLHALQITHRNLKPENLLYYHPGEESKILITDFGLAYS  
 GKKS GDWTMKTLCGTPEYIAPEVLLRKPYS AVDMWALGVITYALLSGFLPFDDDESQTRL YRKILK GKYN  
 YTGEPWPSISHLAKDFIDKLLILEAGHRMSAGQALDHPWVITMAAGSSMKNLQRAISRNL MQRASPHS QS  
 PGSAQSSKSHYSHKSRHMWSKRNL RIVESPLSALL

TRTRPLEQKLISEEDLAANDILDYKDDDDKV

**Chromatograms:** [https://cdn.origene.com/chromatograms/mk6465\\_a06.zip](https://cdn.origene.com/chromatograms/mk6465_a06.zip)

**Restriction Sites:** SgfI-MluI

**Cloning Scheme:**

Cloning sites used for ORF Shuttling:



\* The last codon before the Stop codon of the ORF

**ACCN:** NM\_033126

**ORF Size:** 1155 bp

**OTI Disclaimer:** The molecular sequence of this clone aligns with the gene accession number as a point of reference only. However, individual transcript sequences of the same gene can differ through naturally occurring variations (e.g. polymorphisms), each with its own valid existence. This clone is substantially in agreement with the reference, but a complete review of all prevailing variants is recommended prior to use. [More info](#)

**OTI Annotation:** This clone was engineered to express the complete ORF with an expression tag. Expression varies depending on the nature of the gene.

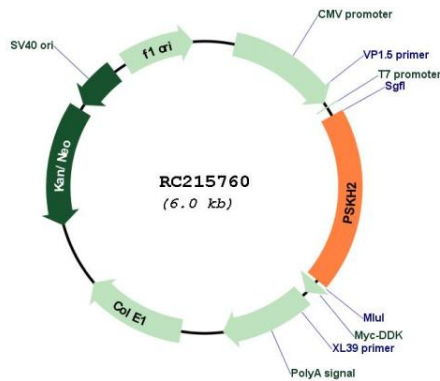
**Components:** The ORF clone is ion-exchange column purified and shipped in a 2D barcoded Matrix tube containing 10ug of transfection-ready, dried plasmid DNA (reconstitute with 100 ul of water).

**Reconstitution Method:**

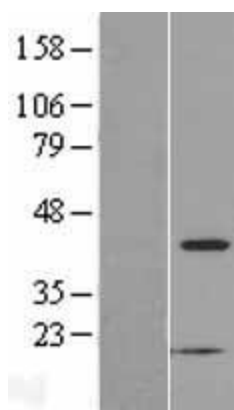
1. Centrifuge at 5,000xg for 5min.
2. Carefully open the tube and add 100ul of sterile water to dissolve the DNA.
3. Close the tube and incubate for 10 minutes at room temperature.
4. Briefly vortex the tube and then do a quick spin (less than 5000xg) to concentrate the liquid at the bottom.
5. Store the suspended plasmid at -20°C. The DNA is stable for at least one year from date of shipping when stored at -20°C.

**RefSeq:** [NM\\_033126.3](#)  
**RefSeq Size:** 1158 bp  
**RefSeq ORF:** 1158 bp  
**Locus ID:** 85481  
**UniProt ID:** [Q96QS6](#)  
**Cytogenetics:** 8q21.3  
**Protein Families:** Druggable Genome, Protein Kinase  
**MW:** 43 kDa

**Product images:**



Circular map for RC215760



Western blot validation of overexpression lysate (Cat# [LY409731]) using anti-DDK antibody (Cat# [TA50011-100]). Left: Cell lysates from untransfected HEK293T cells; Right: Cell lysates from HEK293T cells transfected with RC215760 using transfection reagent MegaTran 2.0 (Cat# [TT210002]).