

Product datasheet for **RC215757**

FGF22 (NM_020637) Human Tagged ORF Clone

Product data:

Product Type: Expression Plasmids
Product Name: FGF22 (NM_020637) Human Tagged ORF Clone
Tag: Myc-DDK
Symbol: FGF22
Mammalian Cell Selection: Neomycin
Vector: pCMV6-Entry (PS100001)
E. coli Selection: Kanamycin (25 ug/mL)
ORF Nucleotide Sequence: >RC215757 representing NM_020637
 Red=Cloning site Blue=ORF Green=Tags(s)

TTTTGTAATACGACTCACTATAGGGCGGCCGGAATTCGTCGACTGGATCCGGTACCGAGGAGATCTGCC
 GCC**CGATCGCC**

ATGCGCCCGCCTGTGGCTGGCCTGGCTGCTGCTGGCGGGCGCCGACGCCGCGGGAACCC
 CGAGCGGTGCGGGGACCGCGCAGTACCCGACCTGGAGGGCGACGTGCGCTGGCGGCCTCTTCTC
 CTCCACTACTTCTTCTGCGCTGGATCCCGCGGCCGCGTGCAGGGCACCCGCTGGCGCCACGGCCAG
 GACAGCATCCTGGAGATCCGCTCTGTACACGTGGGCGTGGTGCATCAAAGCAGTGTCTCAGGCTTCT
 ACGTGGCCATGAACCGCGGGCGCCTACGGGTCGCGACTACACCGTGGACTGCAGTTCCGGGA
 GCGCATCGAAGAGAACGGCCACAACACCTACGCCTCACAGCGCTGGCGCCGCGCCAGCCCATGTTCT
 CTGGCGCTGGACAGGAGGGGGGCCCGCCAGGCGCCGACGCGGGTACCACCTGTCCGCCACT
 TCCTGCCCGTCTGGTCTCC

ACGCGTACGCGGCCGCTCGAGCAGAACTCATCTCAGAAGAGGATCTGGCAGCAATGATATCCTGGATT
 ACAAGGATGACGACGATAAGGTTTAA

Protein Sequence: >RC215757 representing NM_020637
 Red=Cloning site Green=Tags(s)

MRRRLWLGAWLLLARAPDAAGTPSASRGPSPHLEGDVRRRLFSSSTHFFLRVDPGGRVQGRWRHGO
 DSILEIRSVHGVVVIKAVSSGFYVAMNRRGRLYGSRLYTVDRCFRERIEENGHNTYASQRWRRRQPMF
 LALDRRGPRPGRRTRYHLSAHFLPVLVS

TRTRPLEQKLISEEDLAANDILDYKDDDDKV

Chromatograms: https://cdn.origene.com/chromatograms/mg2997_d08.zip

Restriction Sites: Sgfl-MluI



[View online >](#)

Cloning Scheme:


ACCN: NM_020637

ORF Size: 510 bp

OTI Disclaimer: The molecular sequence of this clone aligns with the gene accession number as a point of reference only. However, individual transcript sequences of the same gene can differ through naturally occurring variations (e.g. polymorphisms), each with its own valid existence. This clone is substantially in agreement with the reference, but a complete review of all prevailing variants is recommended prior to use. [More info](#)

OTI Annotation: This clone was engineered to express the complete ORF with an expression tag. Expression varies depending on the nature of the gene.

Components: The ORF clone is ion-exchange column purified and shipped in a 2D barcoded Matrix tube containing 10ug of transfection-ready, dried plasmid DNA (reconstitute with 100 ul of water).

Reconstitution Method:

1. Centrifuge at 5,000xg for 5min.
2. Carefully open the tube and add 100ul of sterile water to dissolve the DNA.
3. Close the tube and incubate for 10 minutes at room temperature.
4. Briefly vortex the tube and then do a quick spin (less than 5000xg) to concentrate the liquid at the bottom.
5. Store the suspended plasmid at -20°C. The DNA is stable for at least one year from date of shipping when stored at -20°C.

RefSeq: [NM_020637.2](#)

RefSeq Size: 513 bp

RefSeq ORF: 513 bp

Locus ID: 27006

UniProt ID: [Q9HCT0](#)

Cytogenetics: 19p13.3

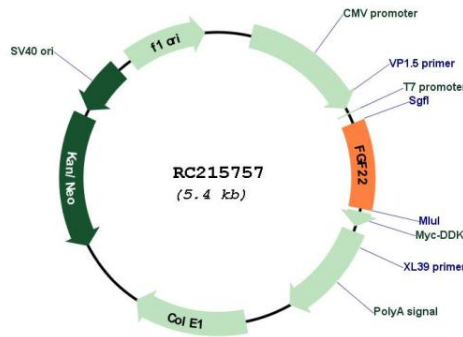
Protein Families: Secreted Protein

Protein Pathways: MAPK signaling pathway, Melanoma, Pathways in cancer, Regulation of actin cytoskeleton

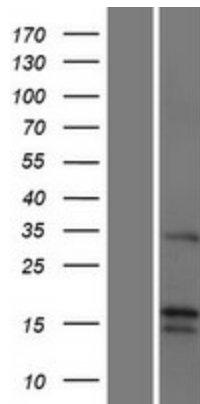
MW: 17.1 kDa

Gene Summary: The protein encoded by this gene is a member of the fibroblast growth factor (FGF) family. FGF family members possess broad mitogenic and cell survival activities and are involved in a variety of biological processes including embryonic development, cell growth, morphogenesis, tissue repair, tumor growth and invasion. The mouse homolog of this gene was found to be preferentially expressed in the inner root sheath of the hair follicle, which suggested a role in hair development. Alternative splicing results in multiple transcript variants. [provided by RefSeq, Jul 2014]

Product images:



Circular map for RC215757



Western blot validation of overexpression lysate (Cat# [LY412412]) using anti-DDK antibody (Cat# [TA50011-100]). Left: Cell lysates from untransfected HEK293T cells; Right: Cell lysates from HEK293T cells transfected with RC215757 using transfection reagent MegaTran 2.0 (Cat# [TT210002]).