

## Product datasheet for RC215755

### MTFR1L (NM\_001099625) Human Tagged ORF Clone

#### Product data:

Product Type:	Expression Plasmids
Product Name:	MTFR1L (NM_001099625) Human Tagged ORF Clone
Tag:	Myc-DDK
Symbol:	MTFR1L
Synonyms:	FAM54B; HYST1888; MST116; MSTP116
Mammalian Cell Selection:	Neomycin
Vector:	pCMV6-Entry (PS100001)
E. coli Selection:	Kanamycin (25 ug/mL)
ORF Nucleotide Sequence:	>RC215755 ORF sequence Red=Cloning site Blue=ORF Green=Tags(s)

TTTTGTAATACGACTCACTATAGGGCGCCGGGAATTCGTCGACTGGATCCGGTACCGAGGAGATCTGCC  
GCC**CGATCGCC**

ATGTCAGGAATGGAAGCCACTGTGACCATCCCAATCTGGCAAACAAGCCACATGGGGCTGCTCGAAGTG  
TAGTAAGAAGAATTGGGACCAACCTACCCTTGAAGCCGTGTGCCCGGGCGTCCTTTGAGACCCTGCCAA  
CATCTCTGACCTGTGTTTGTAGAGATGTGCCCCAGTCCCTACCCTGGCTGACATCGCCTGGATTGCTGCG  
GATGAAGAGGAGACATATGCCCGGGTCAAGGAGTATACGCGCCCCCTGAGGCACACCTGGAAACCCAGCC  
CTCTGATTGTCATGCAGCGCAATGCCTCTGTTCCCAACCTGCGTGGGTCCGAGGAGAGGCTTCTGGCCCT  
GAAGAAGCCAGCTCTGCCAGCCCTAAGCCGCACTACTGAGCTGCAGGACGAGCTGAGCCACTTGCGCAGC  
CAGATTGCAAAGATAGTGGCAGCTGATGCAGCTTCGGCTTCATTAACGCCAGATTCTTATCTCCAGGAA  
GTTCAAATGTCTCTTCTCCCTTACCTTGTGTTTGGATCCTCATTCCACTCTACAACCTCCTTTGTCTAGT  
TGACATCACCGAGGAGACAGAGGTGGAGGTCCCTGAGCTTCCATCAGTCCCCCTGCTTTGTTCTGCCAGC  
CCTGAATGTTGCAAACAGAACACAAAGCTGCCTGCAGTTCGCTGAAGAGGATGACTGCGTCTCTTTGT  
CCAAGGCCAGCAGCTTTGCAGACATGATGGGTATCCTGAAGGACTTTCACCGAATGAAACAGAGTCAAGA  
TCTGAACCGGAGTTTATTGAAGGAGGAAGACCCCTGCTGTGCTTATCTCTGAGTCCCTAAGGAGGAAGTTT  
GCTCTAAAGGAAGAAGATATCAGTAGAAAAGGAAAT

**ACGCGT**ACGCGGGCCGCTCGAGCAGAAACTCATCTCAGAAGAGGATCTGGCAGCAAATGATATCCTGGATT  
ACAAGGATGACGACGATAAGGTTTAA



[View online »](#)

**Protein Sequence:** >RC215755 protein sequence  
Red=Cloning site Green=Tags(s)

MSGMEATVTIPIWQNKPHGAARSVVRRIQTNLPLKPCARASFETLPNISDLCLRDVPPVPTLADIAWIAA  
 DEEETYARVRSRDLRPLRHTWKPSPLIVMQRNASVPNLRGSEERLLALKKPPALPALSRTELQDELSHLRS  
 QIAKIVAADAASASLTPDFLSPGSSNVSSPLPCFGSSFHSTTSFVVISDITEETEVEPELPSVPLLCASAS  
 PECCCKPEHKAACSSSEEDDCVLSKASSFADMMGILKDFHRMKQSQDLNRSLLKEEDPAVLISEVLRKRF  
 ALKEEDISRKGN

TRTRPLEQKLISEEDLAANDILDYKDDDDKV

**Chromatograms:** [https://cdn.origene.com/chromatograms/mk6418\\_g06.zip](https://cdn.origene.com/chromatograms/mk6418_g06.zip)

**Restriction Sites:** SgfI-MluI

**Cloning Scheme:**



**ACCN:** NM\_001099625

**ORF Size:** 876 bp

**OTI Disclaimer:** The molecular sequence of this clone aligns with the gene accession number as a point of reference only. However, individual transcript sequences of the same gene can differ through naturally occurring variations (e.g. polymorphisms), each with its own valid existence. This clone is substantially in agreement with the reference, but a complete review of all prevailing variants is recommended prior to use. [More info](#)

**OTI Annotation:** This clone was engineered to express the complete ORF with an expression tag. Expression varies depending on the nature of the gene.

**Components:** The ORF clone is ion-exchange column purified and shipped in a 2D barcoded Matrix tube containing 10ug of transfection-ready, dried plasmid DNA (reconstitute with 100 ul of water).

**Reconstitution Method:**

1. Centrifuge at 5,000xg for 5min.
2. Carefully open the tube and add 100ul of sterile water to dissolve the DNA.
3. Close the tube and incubate for 10 minutes at room temperature.
4. Briefly vortex the tube and then do a quick spin (less than 5000xg) to concentrate the liquid at the bottom.
5. Store the suspended plasmid at -20°C. The DNA is stable for at least one year from date of shipping when stored at -20°C.

**RefSeq:** [NM\\_001099625.2](#)

**RefSeq Size:** 2022 bp

**RefSeq ORF:** 879 bp

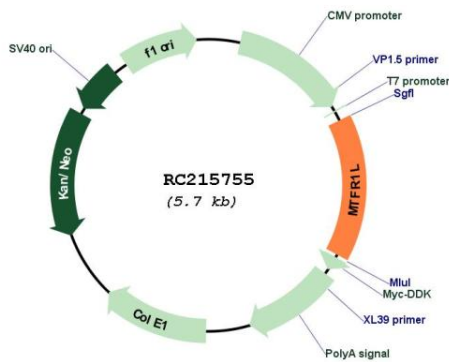
**Locus ID:** 56181

**UniProt ID:** [Q9H019](#)

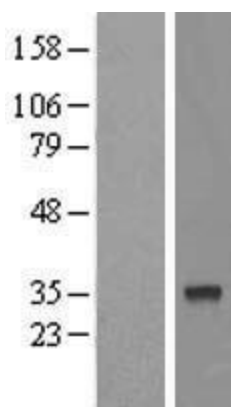
**Cytogenetics:** 1p36.11

**MW:** 32 kDa

**Product images:**



Circular map for RC215755



Western blot validation of overexpression lysate (Cat# [LY420465]) using anti-DDK antibody (Cat# [TA50011-100]). Left: Cell lysates from untransfected HEK293T cells; Right: Cell lysates from HEK293T cells transfected with [RC215805] using transfection reagent MegaTran 2.0 (Cat# [TT210002]).