

## Product datasheet for RC215742

### ELYS (AHCTF1) (NM\_015446) Human Tagged ORF Clone

#### Product data:

Product Type:	Expression Plasmids
Product Name:	ELYS (AHCTF1) (NM_015446) Human Tagged ORF Clone
Tag:	Myc-DDK
Symbol:	ELYS
Synonyms:	ELYS; MST108; MSTP108; TMBS62
Mammalian Cell Selection:	Neomycin
Vector:	pCMV6-Entry (PS100001)
E. coli Selection:	Kanamycin (25 ug/mL)
ORF Nucleotide Sequence:	>RC215742 representing NM_015446 Red=Cloning site Blue=ORF Green=Tags(s)

TTTTGTAATACGACTCACTATAGGGCGGCCGGAATTCGTCGACTGGATCCGGTACCGAGGAGATCTGCC  
GCC**CGATCGCC**

ATGCGAGACTTAAGAGCTCAAGTGACTAGTGGTCTCCTGCCATTTCCAGAAGTGACTCTTCAAGCCCTTG  
GAGAAGACGAAATAACATTAGAATCTGTGCTTCGTGGAAAGTTTCTGCAGGGAAAAATGGACTTGCTTG  
CTTGGCTTGTGGTCCACAACCTTGAGGTAGTAACTCTATAACAGGAGAGCGATTGTCTGCTTACAGATTC  
AGTGGAGTCAATGAACAGCCTCCTGTAGTTTTAGCTGTGAAAGAATTCTTTGGCAGAAGAGAAGTGGAT  
TATTAATAGGATTGGAAGAAACAGAAGGGAGTGTCTCTGTCTTTATGACCTTGGAAATATCAAAAGTAGT  
TAAAGCAGTTGTTCTTCCGGAAGGGTAACAGCTATTGAACCTATAATTAATCATGGAGGAGCCAGTGCA  
AGCACTCAGCATTACATCCAAGTCTGCGATGGCTTTTTGGAGTGGCAGCTGTGGTCACTGATGTTGGAC  
AGATCCTTCTTGTGACCTATGTTTGGATGACTTGTCAATCAAAATGAAGTTGAAGCATCAGATCT  
TGAAGTTCTAACTGGTATCCCAGCTGAAGTACCACACATTAGAGAAAGTGAATGAGACAAGGGCGCCAT  
CTGTGTTTCCAGTTAGTAAGTCCAACAGGAACAGCTGTTTCAACTCTTAGTTACATAAGCAGGACAAATC  
AGCTTGCTGTAGGTTTTCTGATGGCTATCTAGCACTTTGGAACATGAAAAGCATGAAAAGAGAATATTA  
CATACAATTGAAAAGTGGACAAGTTCCTGTATATGCTGTCACTTTTCAAGAACCTGAGAATGATCCTCGG  
AATTGCTGTTACTTGTGGCTGTTCAAGTACACAAGATAGTGAAGGGGATGTTTTGAGTTTGCATCTGC  
TGCACTGGCCTTTGGTAATAGAAAGTGTGGCATCAGGACAAATCTTATATGAGGGGTTAGAATACTG  
TGAAGAAAGATACACCCTGGACCTGACAGTGGCATGTTCCCTTTGAGGGGACAGACGAGTAATACCAAAA  
TTGTTGGGATGCCAGATATAGAGAAATTTTCGATCTCATGGTGCAGGGAGGAAGCGTGAATGAAGCTC  
TATCGCCTGACACTAGTGTTCAGTCTTACCTGGCAGGTGAATATATATGGACAGGAAAAGCCTTCTGT  
ATATTTGGGGCTTTTGTATAAATCGTTGGTATCATGCACAAATGCCAGATTCGTTAAGTTCAGGAGAA  
TATCTACATAATTGCTCTATTTTGCACGTGGTCACTGGAGTCTGTTGTAAGTAGGACTTCTCCACATG  
GCATCTGGATATATTAGTACATGAGAGAAGTTTAAATAGAGGAGTCCCTCCTTCATATCCACCTCCCGA  
GCAGTTTTTAAATCCAAGCACTTATAATTTTGTGCCACTGTTTGTAAACTCGGGAGTGTTCATTTA



[View online »](#)

ACTTGTACTGGCTTTCAGAAGGAGACTTTGACTTTTTAAAGAAATCAGGTCCATCACTCAATGAACTCA  
 TTCCTGATGGTTAATAATCGATGTCTGTAGCTGGCCTTCTTCCCAAGATTTGTTGATGTTTCAGCCTTC  
 CAGTTTAAAGCAAGAAGAACAGTTAGAAGCTATATTGTCAGCAGCAATTCAGACTAGTCCCTGGGACTT  
 TTGACTGGTTATATCCGAAGATGGATAACAGAAGAACAACCAAAATTCGCCACTAATTTGCGCTTTGTTCC  
 TTGAATGGACGTGGAATAAAGTGGTCTCACAAAAGAGGAATTTGACAGACTATGTGTGCCATTATTTGA  
 TGGTTCGTGTCAATTCATGGATCCACAACTATACAGTCTATCCAGCAATGCTATTTGCTTCTTAGCAAT  
 CTTAATATAGTCTTGAGCTGTTTTGCATCAGAAGCCCGAGAGATCACTGAGAGAGGACTGATAGACTTAA  
 GCAATAAGTTTTGGTTTTCCACCTCATCTGTGATGACACAAGTGGTCTTTGGTCTCTCATTCTGG  
 GCTTTTACCAGAAGGCATAGATGATTCTGTGCAAGTTATGCTACAACCTACCCTGTAATTCAG  
 AACTACTACACCAGTCGTCGACAGAAGTTTGGCGTTTATCAAGAGGGAAGTGGAAATCCCGATTGCTTGA  
 TGATTGATGGACTGGTTTCTCAGTTAGGAGAGCGAATTGAGAAGTTGGGAAACGAGATGAAGGAGGCAC  
 AGGAAAATATCCTCCTGCTAGTCTGCATGCAGTACTTGATATGTACCTATTAGACGGCGTACTGAAGCA  
 GCCAAACTCTATTACCATTTATTTGCTACTTGATATTATGTATTCCTTCCCAACAAAACAGACTC  
 CCATTGAATCTTCCCACTGTATTTGCCATTTCTGGGGCCAAGTTAACTTATTACAGGGTGGT  
 GATAGATCATAATGACTATGAGAGTGGTTGGATCTTTTGTTCATCCAGCTACTGCAAAACCTTTGTCA  
 TGCAACATTCAAAGATTATTCAGGCATTCATGAGTCAGGGCAGCACAGACAAGCCCTCAGATATATTC  
 AGACAATGAAGCCAACAGTGTCCAGTGGTAACGATGTTATCCTTACCTCACTGTTTTGCTTTTTAATAG  
 GTGATGGTTGAAGCCTGGAATTTTTGCGGCAACATTGCAATAGGTTGAATATAGAGGAGTTACTGAAG  
 CACATGTATGAAGTCTGTGAGGAAATGGCTTGATGGAAGATTTACTGAAGTTACCATTTACAGACTG  
 AGCAGGAATGTTAGTGAATTTTTGCAGTCCAGTGCCAGCGTTCAGAATCATGAATTCCTTTAGTGCA  
 CCATTTGCAGCGTGCCAATATGTGCCTGCCTGGAAGCTGAACCAAACTCTGAAGATTATGTTATGAAT  
 GATCGTGATCCTCGTTTGGGGAGAGATCACTGGCTCGAAATCTATATTAGACCAGTATGAAAAATCC  
 TTCATAGAGTCCATCGAAAATTAGCCATTGAACGAGCTAAGCCTTATCATCTGTCAACATCATGTTTT  
 TCGATTAGTTTTAGACCCAAACCATTATCAGCAGTTCCAAAGCAAGTTGTAACAGGAACGTGTGTGACA  
 AGATCTGTTTTCATCAACAATGTGTTATCTAAAATTGGAGAAGTTTGGGCAAGCAAGAACCTATAAATA  
 GCACCACACCTTTCAATAGTCTAAAATAGAAGAACCATCTCCTATAGTGTATTGCTCCAGCTCCAGA  
 GCTGCCTGAGGCATTTTTTGAACACCAATTTCAAAGCATCACAAAAATTTCTAGACTGCTAGATTTG  
 GTTGTTCAGCCTGTCCCGGCCTTCTCAGTGTTCGGAGTTTATTCAGCAAAGCTCCATGAATCTCCTT  
 TGTACCTAGTATCCCGTTCAGTCCCTCAAGTTCGCAATTAAGGATCGCCTCAGGCCATCTCCAGGGC  
 TTCAGAATTACATTTGCTTGAACCTCCTTGTAGTAAAGAAAGCTAAAAGTTGGCCATGTCAGTACT  
 ACTTCTGGATTTCTGAGTTCACCTCCTCAGTCCATCCTGAGGTCTACTCTCGATCAACACCTTTAGCAT  
 CTCCTCTCCATCACCTGGAAGGTCTCCTCAACGACTTAAAGAACTAGAATTTCAATTTGTGGAAGAAGA  
 TGTCCACCCAAAATGGATTCTGGGGCTGCAGATGATAGCAAATTAAGAAGTATTTACTACACCTAAAAAA  
 TGTGCAAGTCCAGTGGAACTGAATGGCTGAAGAGCAAAGATAGGACCACATCTTTTTCTGAACAGCC  
 CTGAAAAGGAGCATCAAGAAATGGATGAGGGGTCAAAAGTTTAGAGAACTGGATGTGAGCAAAGGAAA  
 CAGCAGTGTTCATCACATCCGATGAGACTACCTTAGAGTATCAGGATGCACCGTCAACCGAAGACCTT  
 GAAGAGACTGTTTTACGGCCTTAAGCCAAAAGCTCTTCCACTGCACTAACTACTAATGTAACGAAC  
 AAACGAAAAGGATGGAGATAAAGATGTATTTGCATCAGAAGTAACTCCTTCAGACCTACAGAAACAAAT  
 GGGCAATTTAGAAGATGCAGAAACAAGGATCTTTAGTTGCAGCAGAGGCATTTTCAGAATTTGAATCAC  
 TTAAGCCCGTTCAAGGAAGTAAAGCTTCTTTGTGCACCATCAGTCTATGAAGGGAAAATCTTACCC  
 AGAAGTCCAAGGTACCAGTGTGGACGAAGGATTAACATCTGTTGAAACCTACACCCCTGCAATTAGAGC  
 AAATGACAATAAATCTATGGCTGATGCTTGGTGTGTTGGAAGTCTCGCTCACTATCTCTGAAGGT  
 CCTATTGCTCTGAGCGCAGGCTTAACCAGGAAGTAGCGTGAACCTAAAAGAAGATCATGAAGTAGAAG  
 TTGGTGTACTAAAAGAAAGTGTGACTTACCAGAAGAAAAGCTTCCAATTTCTGACAGCCCTCTGATAC  
 TCAAGAAATTCATGTGATTGAACAAGAAAAGCTTGAAGCTCAAGATTCAGGAGAAGAGGCTAGGAATCTT  
 TCATTTAATGAGTTATATCCCTCTGGAACACTTAAAGCTTCAAGTACATTTTGTACTATTGACCAACAGT  
 TTTGTGACTTAGCTGATAACAAAGACACTGCTGAATGTGACATTGCTGAAGTAGATGGGGAACCTTTTGT  
 GGCTCAAAGCAACTTTACCTTGATATTGGAAGGTGAAGAAGGAGAAGTTGAGCCAGGTGATTTTGCATCA  
 TCTGATGTGTACCTAAAGCAGCTAACACAGCAACTGAAGAAAACTTGTATGCAGTGGGAAAAATGATA  
 ATCATGGACAAATTTGCAATTTGCCATCTGCCGTAAGTGAACAAAAGTCCAAAAAGTAGACACTTT  
 ACCATATGTGCCTGAACCTATTAAGTAGCAATTCAGAAAAATTTACTAGATGTAATTAAGACACAAGA  
 AGTAAAGAAATTACTTCAGATACAATGGAACAGTCCATTCATGAAACAATACCTTAGTGAGCCAAAAACA

TAATGTGTCCCACTAAATTGGTCAAATCTGCATTTAAGACTGCTCAGGAAACAAGCACAATGACTATGAA  
TGTGAGCCAGGTTGATGACGTGGTTTCCCTCCAAAACCTCGTACGAGAGGTCAACGTATCCAAAACGTGAAT  
GTCAAATCAGCACAACAGGAAGCATCAGCAGATGTTGCTACTCCTAAGATGCCAGGGCAGTCAGTCAGGA  
AGAAAAC TAGGAAGGCAAAAGAAATTTCTGAAGCTTCTGAAAACATCTATTCTGATGTCAGAGGACTATC  
TCAGAACCAGCAAATACCTCAAATTTCTGTTACGCCTAGGAGAGGAAGGAGAAAGAAAGAAAGTAAATCAG  
GACATACTAGAAAACACCAGTTCTGTGGAACAAGAATTACAGATCACTACAGGTAGGGAATCAAAAAGT  
TAAAATCATCTCAGCTGTTGGAACCAGCAGTTGAAGAACTACTAAAAAGAAAGTAAAGGTTTCATCTGT  
TACAAAAAGGACTCCTAGAGAATTAAAAGATCTGTAGAAAATCAGGAAAGTGTGAAATTATAAATGAT  
CTAAAAGTTAGTACGGTAACAAGTCTAGCAGAATGATCAGAAAATTGAGAAGTACTAATTTAGATGCTT  
CTGAAAATACAGGAAATAAGCAAGATGATAAATCCAGTGACAAGCAGCTGCGTATTAACATGTTAGAAG  
GGTCAGAGGGAGAGAAGTTAGTCCATCAGATGTGAGAGAAGACTCCAACCTTGAGTCATCTCAGTTGACT  
GTTCAAGCAGAATTTGATATGTCTGCCATACCTAGAAAACGTGGTAGACCAAGAAAAATCAATCCATCTG  
AAGATGTAGGATCTAAGGCTGTTAAGGAAGAGAGAAGCCCAAGAAGAAAGAAAGTCCCAGCATTAGAAG  
GAGATCTACAAGAAATACCCAGCTAAAAGTAAAATGTTGATGTTGAAAACAGCTTTAGGAAAATCC  
ATTTTAGTGCCAAACGAGGAACTTCGATGGTGTGAGCTCTAAGAAAAACTTACAAAAAGACTGAAA  
GTCAAAGCCAAAAACGTTCAATTGCACTCAGTATCAGAAGAACGCACAGATGAAATGACACATAAAGAAAC  
AAATGAGCAGGAAGAAAGATTGCTCGCCACAGTTCTTCACTAAATCATCCCGCAGCAGCAGGACTCGG  
TCTAGCAAGGCCATCTTGTGGCCGACCTTCTGAACCAACAATGAGCCTTTATTTTCTCCAGCGTCAG  
AAGTTCCAAGGAAAGCAAAAGCTAAAAAATAGAGGTTCTGCACAGCTGAAAGAATTAGTTTCGGATTT  
ATCTTCTCAGTTTGTCTCCTCACCTCTGCTTTAAGGAGCAGACAAAAAACACATCCAATAAGAACAAG  
CTTGAAGATGAACTGAAAGATGATGCACAATCAGTAGAACTCTGGGAAAGCCAAAAGCGAAACGAATCA  
GGACGTCAAAAACAAAACAAGCAAGCAAAAACACAGAAAAGAAAGTCTTGGTCACCTCCTCCCATAGA  
AATTCGGCTGATTTCCCTTGGCTAGCCAGCTGACGGAGTCAAGAGCAAACCAAGAAAAACTACAGAA  
GTGACAGGAACAGGTCTTGAAGGAACAGAAAGAACTGTCTTCTATCCAAGCAAATTTTACGCAGAA  
AAATGCTG

ACGCGTACGCGGCCGCTCGAGCAGAACTCATCTCAGAAGAGGATCTGGCAGCAAATGATATCCTGGATT  
ACAAGGATGACGACGATAAGGTTTAA

**Protein Sequence:** >RC215742 representing NM\_015446  
 Red=Cloning site Green=Tags(s)

```
MRDLRAQVTSGLLPFPEVTLQALGEDEITLESVLRGKFAAGKNGLACLACGPQLEVVNSITGERLSAYRF
SGVNEQPPVVLAVKEFSWQKRTGLLIGLEETEGSVLCLYDLGISKVVKAVVLPGRVTAIEPIINHGGASA
STQHLHPSLRWLFVAAVVTDVQGILLVDLCLDDLSCNQNEVEASDLEVLTGIPAEVPHIRESVMRQGRH
LCFQLVSPGTAVSTLSYISRTNQLAVGFSQDYLALWNMMSMKREYYIQLESQVPPVYAVTFQEPENDPR
NCCYLWAVQSTQDSEGDVLSLHLLQLAFGNRKLASGQILYEGLEYCEERYTDLDTGGMFPLRGQTSNTK
LLGCQSIEKFRSHGDREEGVNEALSPDTSVSVFTWQVNIYQGKPSVYLGLFDINRWYHAQMPDSLRSGE
YLHNCYSFALWSLESVVSRTSPHGILDILVHERSLNRGVPPSYPPPEQFFNPSTYNFDATCLLNSGVVHL
TCTGFQKETLTLFKKSGPSLNELIPDGYNRCLVAGLLSPRFVDVQPSLSQEEQLEAILSAAIQTSSLGL
LTGYIRRWITTEEQPNATNLRVLEWTWNKVVLTKKEFDRLCVPLFDGSCHFMDPQTIQSIQQCYLLLSN
LNIVLSCFASEAREITERGLIDL SNKFVVSHLICQYAQVVLWFSHSGLLPEGIDDSVQLSRLCYNYPVIQ
NYTTSRRQKFERLSRGKWNPDCLMIDGLVSQLGERIEKLWKRDEGGTGKYPASLHAVLDMYLLDGVTEA
AKHSITIIYLLDIMYSFPNKTDTPIESFPTVFAISWGQVKLIQGFWDIDHNDYESGLDLLFHPATAKPLS
WQHSKI IQAFMSQGEHRQALRYIQTMKPTVSSGNDVILHLTVLLFNRCMVEAWNFLRQHCNRLNIEELLK
HMYEVCQEMGLMEDLLKLPFTDTEQECLVKFLQSSASVQNHFFLLVHHLQRANYVPALKLNQTLKINVMN
DRDPRLRERSLARNSILDQYGIKILPRVHRKLAIERAKPYHLSTSSVFRVSRPKPLSAVPKQVVTGTVLT
RSVFINNVL SKIGEVWASKEPINSTTPFNSSKIEEPSPIVYSLPAPELPEAFFGTPISKASQKISRLLDL
VVQPVPRPSQCSEFIQQSSMKSPLYLVSRSLSQSSQLKGSQPAISRASELHLLLETPLVVKKAKSLAMSVT
TSGFSEFTPQSILRSTLRSTPLASPSPPGRSPQRKKE TRISFVEEDVHPKWIPGAADDSKLEVF TTPKK
CAVPVETEWLKSKDR TTSFFLNSPEKEHQEMDEGSQSLEKLDVSKGNSSVITSDETTLEYQDAPSPEDL
EETVFTASKPKSSSTALTTNVTEQTEKDGDKDFASEVTPSDLQKQMGNLEDAETKDLLVAEAFSELNH
LSPVQGTASLCAPSVYEGKIF TQKSKVPVLDEGLTSVETYP AIRANDNKSMADVLGDGNSSLTISEG
PTVSRRLNQEVALNLKEDHEVEVGVLESVDLPEEKLPISDPPDTEI HVIEQEKLEAQDSGEEARNL
SFNELYPSGTLKLQYNFDTIDQQFCDLADNKDTAECDIAEVDGELFVAQSNFTLILEGEEGEVEPGDFAS
SDVLPKAANTA TEEKLVCSGENDNHGQIANLPSAVTSDQKSQKVDLTPYVPEPIKVAIAENLLDVIKDR
SKEITSDTMEQSIHETIPLVSQNMCPKLVKSAFKTAQETSTMTMNVSQVDDVSSKTRTRGRQRIQNVN
VKSAQQEASADVATPKMPGQSVRKKTRKAKEISEASENIYSDVRGLSQNQQIPQNSVTPRRGRKKENQ
DILENTSSVEQELQITTGRESKRLKSSQLLEPAVEETTKKEVKVSVVTKRTPRRIKRSVENQESVEIIND
LKVSTVTSRMRIRKLRSTNLDASENTGNKQDDKSSDKQLRIKHVRRVRGREVSPSDVREDSNLESSQLT
VQAEFDMSAIPKRGRPRKINPSEDVGSKAVKEERSPKKKEAPSIRRSTRNTPAKSENVVGVKPALGKS
ILVPNEELSMVMSSKKLTKKTESQSQRSLHSVSEERTDEMTHKETNEQEERLLATASFTKSSRSRTR
SSKAILLPDLSEPNNEPLFSPASEVPRKAKAKKIEVPAQLKELVSDLSSQFVISPPALRSRQKNTSNKNK
LEDELKDDAQSVETL GKPKAKIRTSKTKQASKNTEKESAWSPPIEIRLISPLASPADGVKSKPRKTE
VTGTGLGRNRKLLSSYPKQILRRKML
```

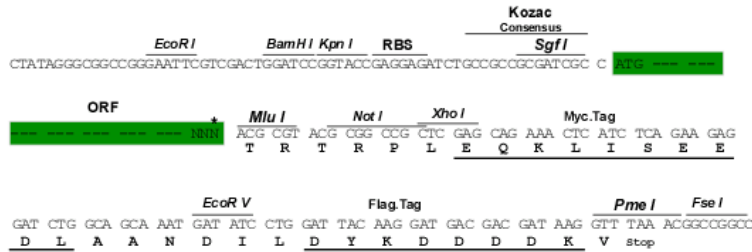
TRTRPLEQKLI SEEDLAANDILDYKDDDDKV

**Chromatograms:** [https://cdn.origene.com/chromatograms/mk8009\\_c10.zip](https://cdn.origene.com/chromatograms/mk8009_c10.zip)

**Restriction Sites:** SgfI-MluI

**Cloning Scheme:**

Cloning sites used for ORF Shutting:


**ACCN:** NM\_015446

**ORF Size:** 6798 bp

**OTI Disclaimer:** The molecular sequence of this clone aligns with the gene accession number as a point of reference only. However, individual transcript sequences of the same gene can differ through naturally occurring variations (e.g. polymorphisms), each with its own valid existence. This clone is substantially in agreement with the reference, but a complete review of all prevailing variants is recommended prior to use. [More info](#)

**OTI Annotation:** This clone was engineered to express the complete ORF with an expression tag. Expression varies depending on the nature of the gene.

**Components:** The ORF clone is ion-exchange column purified and shipped in a 2D barcoded Matrix tube containing 10ug of transfection-ready, dried plasmid DNA (reconstitute with 100 ul of water).

**Reconstitution Method:**

1. Centrifuge at 5,000xg for 5min.
2. Carefully open the tube and add 100ul of sterile water to dissolve the DNA.
3. Close the tube and incubate for 10 minutes at room temperature.
4. Briefly vortex the tube and then do a quick spin (less than 5000xg) to concentrate the liquid at the bottom.
5. Store the suspended plasmid at -20°C. The DNA is stable for at least one year from date of shipping when stored at -20°C.

**RefSeq:** [NM\\_015446.3](#), [NP\\_056261.3](#)
**RefSeq Size:** 8526 bp

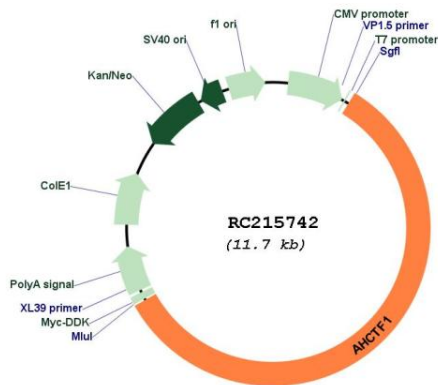
**RefSeq ORF:** 6828 bp

**Locus ID:** 25909

**UniProt ID:** [Q8WYP5](#)

Cytogenetics:	1q44
Domains:	AT_hook
Protein Families:	ES Cell Differentiation/IPS
MW:	253.3 kDa
Gene Summary:	Required for the assembly of a functional nuclear pore complex (NPC) on the surface of chromosomes as nuclei form at the end of mitosis. May initiate NPC assembly by binding to chromatin and recruiting the Nup107-160 subcomplex of the NPC. Also required for the localization of the Nup107-160 subcomplex of the NPC to the kinetochore during mitosis and for the completion of cytokinesis.[UniProtKB/Swiss-Prot Function]

### Product images:



Circular map for RC215742