

Product datasheet for RC215740L1

Endonuclease V (ENDO V) (NM_173627) Human Tagged Lenti ORF Clone

Product data:

Product Type:	Expression Plasmids
Product Name:	Endonuclease V (ENDO V) (NM_173627) Human Tagged Lenti ORF Clone
Tag:	Myc-DDK
Symbol:	Endonuclease V
Mammalian Cell Selection:	None
Vector:	pLenti-C-Myc-DDK (PS100064)
E. coli Selection:	Chloramphenicol (34 ug/mL)
ORF Nucleotide Sequence:	The ORF insert of this clone is exactly the same as(RC215740).
Restriction Sites:	SgfI-MluI
Cloning Scheme:	

Cloning sites used for ORF Shuttling:



* The last codon before the Stop codon of the ORF.

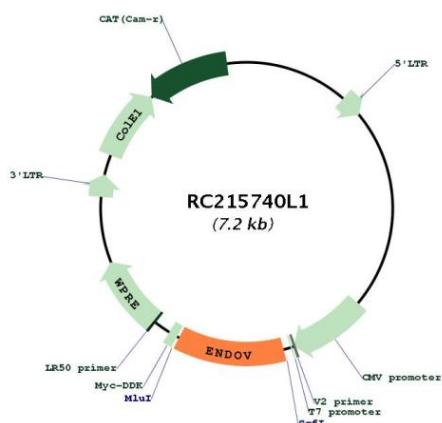
ACCN:	NM_173627
ORF Size:	846 bp



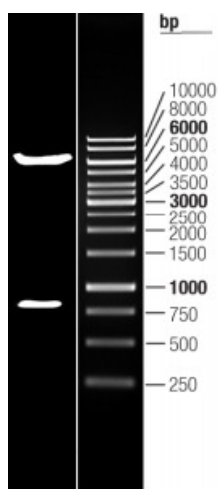
[View online »](#)

OTI Disclaimer:	The molecular sequence of this clone aligns with the gene accession number as a point of reference only. However, individual transcript sequences of the same gene can differ through naturally occurring variations (e.g. polymorphisms), each with its own valid existence. This clone is substantially in agreement with the reference, but a complete review of all prevailing variants is recommended prior to use. More info
OTI Annotation:	This clone was engineered to express the complete ORF with an expression tag. Expression varies depending on the nature of the gene.
Components:	The ORF clone is ion-exchange column purified and shipped in a 2D barcoded Matrix tube containing 10ug of transfection-ready, dried plasmid DNA (reconstitute with 100 ul of water).
Reconstitution Method:	<ol style="list-style-type: none">1. Centrifuge at 5,000xg for 5min.2. Carefully open the tube and add 100ul of sterile water to dissolve the DNA.3. Close the tube and incubate for 10 minutes at room temperature.4. Briefly vortex the tube and then do a quick spin (less than 5000xg) to concentrate the liquid at the bottom.5. Store the suspended plasmid at -20°C. The DNA is stable for at least one year from date of shipping when stored at -20°C.
RefSeq:	NM_173627.2
RefSeq Size:	2858 bp
RefSeq ORF:	849 bp
Locus ID:	284131
UniProt ID:	Q8N8Q3
Cytogenetics:	17q25.3
Protein Families:	Druggable Genome
MW:	30.6 kDa
Gene Summary:	Endoribonuclease that specifically cleaves inosine-containing RNAs: cleaves RNA at the second phosphodiester bond 3' to inosine. Has strong preference for single-stranded RNAs (ssRNAs) toward double-stranded RNAs (dsRNAs). Cleaves mRNAs and tRNAs containing inosine. Also able to cleave structure-specific dsRNA substrates containing the specific sites 5'-IIUI-3' and 5'-UIUU-3'. Inosine is present in a number of RNAs following editing; the function of inosine-specific endoribonuclease is still unclear: it could either play a regulatory role in edited RNAs, or be involved in antiviral response by removing the hyperedited long viral dsRNA genome that has undergone A-to-I editing. Binds branched DNA structures.[UniProtKB/Swiss-Prot Function]

Product images:



Circular map for RC215740L1



Double digestion of RC215740L1 using SgfI and MluI