

## Product datasheet for RC215734

### QK1 (QKI) (NM\_206854) Human Tagged ORF Clone

#### Product data:

Product Type:	Expression Plasmids
Product Name:	QK1 (QKI) (NM_206854) Human Tagged ORF Clone
Tag:	Myc-DDK
Symbol:	QK1
Synonyms:	Hqk; hqkl; QK; QK1; QK3
Mammalian Cell Selection:	Neomycin
Vector:	pCMV6-Entry (PS100001)
E. coli Selection:	Kanamycin (25 ug/mL)
ORF Nucleotide Sequence:	>RC215734 representing NM_206854 Red=Cloning site Blue=ORF Green=Tags(s)

TTTTGTAATACGACTCACTATAGGGCGGCCGGAATTCGTCGACTGGATCCGGTACCGAGGAGATCTGCC  
GCC**CGATCGCC**

ATGGTCGGGAAATGAAACGAAGGAGAAGCCGAAGCCACCCAGATTACCTGATGCAGCTGATGAACG  
ACAAGAAGCTCATGAGCAGCCTGCCAACTTCTGCGGGATCTTCAACCACCTCGAGCGGCTGCTGGACGA  
AGAAATTAGCAGAGTACGGAAAGACATGTACAATGACACATTAATGGCAGTACAGAGAAAAGGAGTGCA  
GAATTGCCTGATGCTGTGGGACCTATTGTTCAAGGAACTTTATGTGCCTGTAAAAGAATACC  
CAGATTTAATTTGTTGGGAGAATCCTTGGACCTAGAGGACTTACAGCCAAACAATTGAAGCAGAAAC  
CGGATGTAAAATCATGGTCCGAGGCAAAGGCTCAATGAGGGATAAAAAAAGGAGGAGCAAATAGAGGC  
AAGCCCAATTGGGAGCATCTAAATGAAGATTTACATGTAATCACTGTGGAAGATGCTCAGAACAGAG  
CAGAAATCAAATTGAAGAGAGCAGTTGAAGAAGTGAAGAAATTATTGGTACCTGCAGCAGAAGGAGAAGA  
CAGCCTGAAGAAGATGCAGCTGATGGAGCTTGGCATTCTGAATGGCACCTACAGAGATGCCAACATTA  
TCACCAGCCCTTGCCCTTTCTCTTGAGCAACAGCCAGGCTGCTCAAGGATCATTACTGGGCTGCGC  
CGGTTCTCCACAGCTGCCCTGCGTACTCCTACGCCAGCTGGCCCTACCATAATGCCTTTGATCAGACA  
AATACAGACCGCTGTCATGCCAAACGGAACCTCACCACCTGCTGCAATAGTTCTCCAGGGCCCGAA  
GCTGGTTAATCTATACCCCTATGAGTACCCCTACACATTGGCACCAGCTACATCAATCCTTGAGTATC  
CTATTGAACCTAGTGGTATTAGAGTGGATTGAAATGCCAGTCATGCCTGATATTTAGCCCAT

**ACGCGT**ACGCGGCCGCTCGAGCAGAAACTCATCTCAGAAGAGGATCTGGCAGCAAATGATATCCTGGATT  
ACAAGGATGACGACGATAAGGTTTAA



[View online »](#)

**Protein Sequence:** >RC215734 representing NM\_206854  
Red=Cloning site Green=Tags(s)

MVGEMETKEKPKPTPDYLMQLMNDKKLMSSLPNFCGIFNHLERLLDEEISRVKDMYNDTLNGSTEKRSA  
 ELPDAVGPVQLQEKL YYPVKEYPDFNFVGRILGPRGL TAKQLEAETGCKIMVRGKGSMDKKKEEQNRG  
 KPNWEHLNEDLHVLITVEDAQNRAEIKLKRAVEEVKLLVPAAEGEDSLKKMQLMELAILNGTYRDANIK  
 SPALAFSLAATAQAAPRIITGPAPVLPAAALRTPPTAGPTIMPLIRQIQTAVMPNGTPHPTAAIVPPGPE  
 AGLIYTPYEYPYTLAPATSILEYPIEPSGVLEWIEMPVMPDISAH

TRTRPLEQKLISEEDLAANDILDYKDDDDKV

**Chromatograms:** [https://cdn.origene.com/chromatograms/mg2504\\_h01.zip](https://cdn.origene.com/chromatograms/mg2504_h01.zip)

**Restriction Sites:** SgfI-MluI

**Cloning Scheme:**

Cloning sites used for ORF Shuttling:



\* The last codon before the Stop codon of the ORF

**ACCN:** NM\_206854

**ORF Size:** 975 bp

**OTI Disclaimer:** The molecular sequence of this clone aligns with the gene accession number as a point of reference only. However, individual transcript sequences of the same gene can differ through naturally occurring variations (e.g. polymorphisms), each with its own valid existence. This clone is substantially in agreement with the reference, but a complete review of all prevailing variants is recommended prior to use. [More info](#)

**OTI Annotation:** This clone was engineered to express the complete ORF with an expression tag. Expression varies depending on the nature of the gene.

**Components:** The ORF clone is ion-exchange column purified and shipped in a 2D barcoded Matrix tube containing 10ug of transfection-ready, dried plasmid DNA (reconstitute with 100 ul of water).

**Reconstitution Method:**

1. Centrifuge at 5,000xg for 5min.
2. Carefully open the tube and add 100ul of sterile water to dissolve the DNA.
3. Close the tube and incubate for 10 minutes at room temperature.
4. Briefly vortex the tube and then do a quick spin (less than 5000xg) to concentrate the liquid at the bottom.
5. Store the suspended plasmid at -20°C. The DNA is stable for at least one year from date of shipping when stored at -20°C.

**RefSeq:** [NM\\_206854.3](#)

**RefSeq Size:** 6972 bp

**RefSeq ORF:** 978 bp

**Locus ID:** 9444

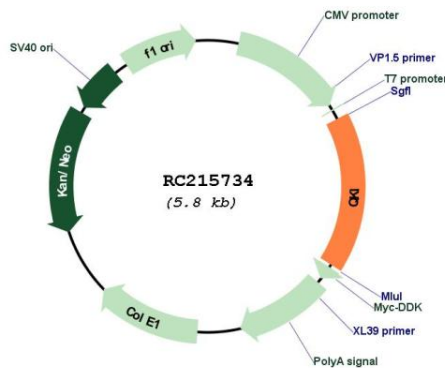
**UniProt ID:** [Q96PU8](#)

**Cytogenetics:** 6q26

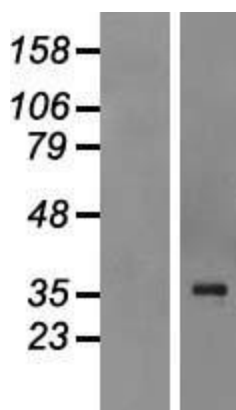
**MW:** 35.8 kDa

**Gene Summary:** The protein encoded by this gene is an RNA-binding protein that regulates pre-mRNA splicing, export of mRNAs from the nucleus, protein translation, and mRNA stability. The encoded protein is involved in myelination and oligodendrocyte differentiation and may play a role in schizophrenia. Multiple transcript variants encoding different isoforms have been found for this gene. [provided by RefSeq, Jul 2014]

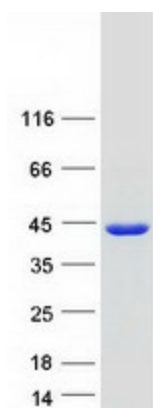
**Product images:**



Circular map for RC215734



Western blot validation of overexpression lysate (Cat# [LY403731]) using anti-DDK antibody (Cat# [TA50011-100]). Left: Cell lysates from untransfected HEK293T cells; Right: Cell lysates from HEK293T cells transfected with RC215734 using transfection reagent MegaTran 2.0 (Cat# [TT210002]).



Coomassie blue staining of purified QKI protein (Cat# [TP315734]). The protein was produced from HEK293T cells transfected with QKI cDNA clone (Cat# RC215734) using MegaTran 2.0 (Cat# [TT210002]).