

Product datasheet for RC215731

PRELP (NM_002725) Human Tagged ORF Clone

Product data:

Product Type: Expression Plasmids
Product Name: PRELP (NM_002725) Human Tagged ORF Clone
Tag: Myc-DDK
Symbol: PRELP
Synonyms: MST161; MSTP161; SLRR2A
Mammalian Cell Selection: Neomycin
Vector: pCMV6-Entry (PS100001)
E. coli Selection: Kanamycin (25 ug/mL)
ORF Nucleotide Sequence: >RC215731 representing NM_002725
 Red=Cloning site Blue=ORF Green=Tags(s)

TTTTGTAATACGACTCACTATAGGGCGGCCGGAATTCGTCGACTGGATCCGGTACCGAGGAGATCTGCC
 GCC**CGATCGCC**

ATGAGGTCACCCCTCTGCTGGCTCCTCCCACTTCTCATCTTGGCCTCAGTGGCCCAAGGCCAGCCAACA
 GACGACCAAGACCCGGGACTGGGCCCGGGCGCAGACCCAGGCCAGGCCAGGCCACACCCAGCTTTCC
 TCAGCCTGATGAACCAGCAGAGCCAACAGACCTGCCTCCTCCCTCCCTCCAGGCCCTCCATCTATCTTC
 CCTGACTGTCCCGCAATGCTACTGCCCCCTGATTTCCCATCTGCCCTCTACTGTGATAGCCGCAACC
 TCGGAAAGGTCCCTGTCACTCCCGCCCGCATCCATTACCTCTATCTCCAGAACAACCTTCATCACTGAGCT
 CCCGGTGGAGTCCTTCCAGAATGCCACAGGCCTGCGATGGATTAACCTGGACAACAACCGAATCCGCAAG
 ATAGACCAGAGGGTGCTGGAGAACTGCCCGGCCCTGGTGTTCCTCTACATGGAGAAGAACCAGTTGGAAG
 AGGTCCCCTCGGCCCTGCCCGGAACCTGGAGCAGCTGAGGCTGAGCCAGAACCACATCTCCAGAATCCC
 GCCTGGTGTCTTCAGCAAGCTGGAGAACCTGCTGCTCCTGGATCTCCAGCACAACAGGCTGAGCGACGGC
 GTCTTCAAGCCCGACACCTTCCATGGCCTCAAGAACCTCATGCAGCTCAACCTGGCCACAACATCCTGA
 GAAAGATGCCGCCAGGGTCCCCACCGCATTACCAGCTCTACCTGGACAGTAACAAGATTGAGACCAT
 CCCTAACGGATACTTCAAGAGCTTTCCCAATCTGCCTTATTTCGGCTTAACTACAACAAGCTGACAGAC
 AGGGGACTCCCCAAGAATCCTTTAATATCTCCAACCTGCTGTGCTCCACCTGTCCCAACAACAGGATCA
 GCAGTGTGCCCGCATCAACAACAGGCTGGAACACCTGTACCTCAACAACAATAGCATCGAGAAAATCAA
 CGGAACCCAGATTTGCCCAACGACCTAGTGGCGTTCCATGACTTCTCCTCGGACCTGGAGAACGTGCCA
 CACCTGCGCTACCTGCGGCTGGATGAAACTACTTGAAGCCGCCATCCCCTGGACCTCATGATGTGCT
 TCCGCTCCTGCAGTCCGTGGTCATC

ACGCGTACGCGGCCGCTCGAGCAGAACTCATCTCAGAAGAGGATCTGGCAGCAATGATATCCTGGATT
 ACAAGGATGACGACGATAAGGTTTAA



[View online >](#)

Protein Sequence: >RC215731 representing NM_002725
Red=Cloning site Green=Tags(s)

MRSPLCWLLPLLILASVAQGQPTRRRPRPGTGPGRRRPRRPRPTPSFFQPDEPAEPTDLPPLPPGPPSIF
 PDCPRECYCPDFPSALYCDNRNLRKVPVIPPRIHYLYLQNNFITELPVESFQATGLRWINLDNNRIRK
 IDQRVLEKLPGLVFLYMEKNQLEEVPSALPRNLEQLRLSQNHISRIPPGVFSKLENLLLDLQHNRLSDG
 VFKPDTFHGLKNLMQLNLAHNILRKMPRPVPTAIIHQLYLDSNKIETIPNGYFKSFPNLAFLIRLNYNKLT
 RGLPKNSFNISNLLVLHLSHNRISVPAINNRLHLYLNNSIEKINGTQICPNDLVAFHDFSSDLENV
 HLRYLRLDGNLKPPIPLDLMMCFRLLQSVVI

TRTRPLEQKLISEEDLAANDILDYKDDDDKV

Chromatograms: https://cdn.origene.com/chromatograms/mk6158_b02.zip

Restriction Sites: SgfI-MluI

Cloning Scheme:



ACCN: NM_002725

ORF Size: 1146 bp

OTI Disclaimer: The molecular sequence of this clone aligns with the gene accession number as a point of reference only. However, individual transcript sequences of the same gene can differ through naturally occurring variations (e.g. polymorphisms), each with its own valid existence. This clone is substantially in agreement with the reference, but a complete review of all prevailing variants is recommended prior to use. [More info](#)

OTI Annotation: This clone was engineered to express the complete ORF with an expression tag. Expression varies depending on the nature of the gene.

Components: The ORF clone is ion-exchange column purified and shipped in a 2D barcoded Matrix tube containing 10ug of transfection-ready, dried plasmid DNA (reconstitute with 100 ul of water).

Reconstitution Method:

1. Centrifuge at 5,000xg for 5min.
2. Carefully open the tube and add 100ul of sterile water to dissolve the DNA.
3. Close the tube and incubate for 10 minutes at room temperature.
4. Briefly vortex the tube and then do a quick spin (less than 5000xg) to concentrate the liquid at the bottom.
5. Store the suspended plasmid at -20°C. The DNA is stable for at least one year from date of shipping when stored at -20°C.

RefSeq: [NM_002725.4](#)

RefSeq Size: 5833 bp

RefSeq ORF: 1149 bp

Locus ID: 5549

UniProt ID: [P51888](#)

Cytogenetics: 1q32.1

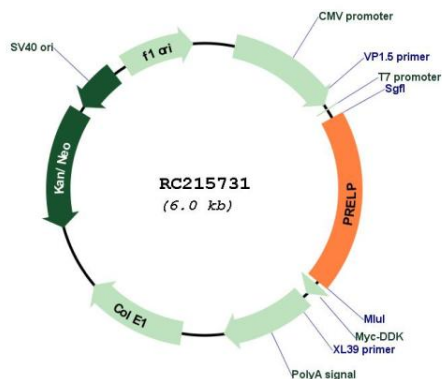
Domains: LRRNT, LRR, LRR_TYP, LRR_PS

Protein Families: Secreted Protein

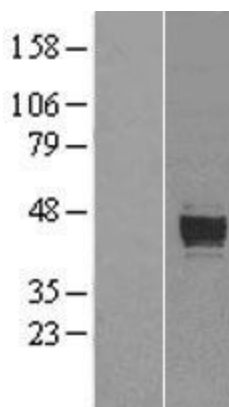
MW: 43.81 kDa

Gene Summary: The protein encoded by this gene is a leucine-rich repeat protein present in connective tissue extracellular matrix. This protein functions as a molecule anchoring basement membranes to the underlying connective tissue. This protein has been shown to bind type I collagen to basement membranes and type II collagen to cartilage. It also binds the basement membrane heparan sulfate proteoglycan perlecan. This protein is suggested to be involved in the pathogenesis of Hutchinson-Gilford progeria (HGP), which is reported to lack the binding of collagen in basement membranes and cartilage. Alternatively spliced transcript variants encoding the same protein have been observed. [provided by RefSeq, Jul 2008]

Product images:



Circular map for RC215731



Western blot validation of overexpression lysate (Cat# [LY400959]) using anti-DDK antibody (Cat# [TA50011-100]). Left: Cell lysates from untransfected HEK293T cells; Right: Cell lysates from HEK293T cells transfected with RC215731 using transfection reagent MegaTran 2.0 (Cat# [TT210002]).