

## Product datasheet for **RC215726**

### **HMG2L1 (HMGXB4) (NM\_014250) Human Tagged ORF Clone**

#### **Product data:**

Product Type:	Expression Plasmids
Product Name:	HMG2L1 (HMGXB4) (NM_014250) Human Tagged ORF Clone
Tag:	Myc-DDK
Symbol:	HMG2L1
Synonyms:	high-mobility group protein 2-like 1; HMG2L1; HMGBCG; HMG box domain containing 4; OTTHUMP00000028778; THC211630
Mammalian Cell Selection:	Neomycin
Vector:	pCMV6-Entry (PS100001)
E. coli Selection:	Kanamycin (25 ug/mL)



[View online »](#)

**ORF Nucleotide Sequence:**

>RC215726 representing NM\_014250  
 Red=Cloning site Blue=ORF Green=Tags(s)

TTTTGTAATACGACTCACTATAGGGCGGCCGGGAATTCGTCGACTGGATCCGGTACCGAGGAGATCTGCC  
 GCC**CGGATCGCC**

ATGGACCTGTTGAAAGCTATCACTTCCCCACTGGCAGCAGGCTCCAAGCCCTCCAAAAGACTGGGGAGA  
 AATCCTCTGGCTCTCAAGCCATTCGGAGAGTAAAAAGGAGCACACAGGAAGAAAGTCAGTGGAAGCAG  
 TGGGGAATACCCTAGAGGATGGTGGCTCCACAAAATCGAAAAAATGAAACCTCTCTATGTGAACACA  
 GAGACTGACCTTCGGGAGCCTGATGGTTAAAAATGAAACTTATTCTGTACCAAAGGAGAAGGGAA  
 GCAGCTCTGTTGATGAGGAGTCTTTTCAATATCCCTCCCAACAAGCGACTGTGAAAAATCCTCAAAGAA  
 ATCAGCTCGGGATGAGCAGGGTCTTTACTCCTAGGACATGAGTTACAGAGCTTTCTGAAAAACAGCCCG  
 AAAAAGCACAAAGTCATCCTCAGACGCACATTCATCTCTGGCCCTGAAGGCTGTGGGTCTGACGCCCTCC  
 AGTTCGCAGAGTCCCACAGTCTAACCTTGATCTTTCAGGGCTTGAACCTATTCTGGTAGAATCAGACTC  
 ATCCTCTGGTGGGAACTAGAGGCTGGGGAGTTAGTGATAGATGATTCTTACCGAGAATCAAGAAGAAA  
 AAGAAGTCAAAGAAGAGCAAAAAGAAGAAAGACAAGGAGAAGCATAAAGAGAAGCGACACTCCAAGTCCA  
 AGAGAAGTTTAGGACTTTCTGCCGTGCCAGTGGGAGAGGTCACAGTGACATCTGGCCCTCCTCCAGCAT  
 CCCATACGCTGGAGCAGCAGCACCTCCCCTGCCACTTCTGGCCTCCACACAGATGGGCATAGTAAAAA  
 AAAAAGAAAAAAGAAGAGAAGGACAAAGAGAGAGAGAGAGAGAGAAAGCCAAAAAAGAAGAACATGTCGG  
 CCTACCAGGTGTTCTGTAAGAGTATCGCGTGACCATTGTGGCTGACCATCCAGGTATAGATTTGGGGA  
 ACTTAGTAAAAACTGGCTGAGGTGTGGAAGCAATTACCAGAAAAAGACAAACTGATTTGGAAGCAAAAA  
 GCTCAGTATCTGCAGCACAAACAGAACAAGCAGAAGCCACAACCTGTGAAAAGGAAAGCATCCAGCTCAG  
 AAGGTTCCATGAAAGTCAAAGCCTCTTCTGTAGGAGTACTGTACCCCGAAGAAGTCCCCACCCACCAC  
 CATGCTGTTACCAGCCTCACCAGCCAAAGCCCTGAGACAGAGCCATTGATGTTGCTGCTCATCTTCAG  
 CTGTTGGGAGAGTCCCTAAGCCTCATTGGACACCGTCTGCAGGAACTGAGGGTATGGTGGCTGTGTCTG  
 GCAGTTTGTGAGTCTTCTGGATTCCATTATCTGTGCCCTTGGCCCTTGGCATGTCTCACCACACAAC  
 ACCTGAATTGAATGGCTGTCCCAACAGGTCTTGTCAAACACATTAGACAACATTGCTTACATCATGCCG  
 GGACTG

**ACGCGT**ACGCGGCCGCTCGAGCAGAAACTCATCTCAGAAGAGGATCTGGCAGCAATGATATCCTGGATT  
 ACAAGGATGACGACGATAAGGTTTAA

**Protein Sequence:**

>RC215726 representing NM\_014250  
 Red=Cloning site Green=Tags(s)

MDLLKAITSPLAAGSKPSKKTGEKSSGSSSHSESKKEHHRKVKVSGSSGELPLEDGGSHKSKMKPLYVNT  
 ETLLREPDGLKMKLILSPKEKSSSVDEESFQYPSQQATVKKSSKKSARDEQGALLLGHELQSFLKTR  
 KKHKSSSDAHSSPPEGCGSDASQFAESHANLDL SGLPEILVESDSSSGGELEAGELVIDDSYREIKKK  
 KKS KSKSKKKKDKKEKHKEKRHSKSKRSLGLSAVPVGEVTVTSGPPPSIPYAGAAAPPLPLPGLHTDGHSEK  
 KKKKEEKDKEREREGEKPKKNMSAYQVFCKEYRVTIVADHPGIDFGELSKKLAEVWKQLPEKDKLIWKQK  
 AQYLQHKQNKAETTVKRKASSSESGSMVKASSVGVLS PQKKSPTTMLLPASPAPETEPIDVAAHLQ  
 LLGESLSLIGHRLQETEGMVAVSGSLSVLLDSIICALGPLACLTTQLPELNGCPKQVLSNTLDNIAYIMP  
 GL

**TRTRPLEQKLISEEDLAANDILDYKDDDDKV**

**Chromatograms:**

[https://cdn.origene.com/chromatograms/mk6372\\_d10.zip](https://cdn.origene.com/chromatograms/mk6372_d10.zip)

**Restriction Sites:**

Sgfl-Mlul

**Cloning Scheme:**


**ACCN:** NM\_014250

**ORF Size:** 1476 bp

**OTI Disclaimer:** The molecular sequence of this clone aligns with the gene accession number as a point of reference only. However, individual transcript sequences of the same gene can differ through naturally occurring variations (e.g. polymorphisms), each with its own valid existence. This clone is substantially in agreement with the reference, but a complete review of all prevailing variants is recommended prior to use. [More info](#)

**OTI Annotation:** This clone was engineered to express the complete ORF with an expression tag. Expression varies depending on the nature of the gene.

**Components:** The ORF clone is ion-exchange column purified and shipped in a 2D barcoded Matrix tube containing 10ug of transfection-ready, dried plasmid DNA (reconstitute with 100 ul of water).

- Reconstitution Method:**
1. Centrifuge at 5,000xg for 5min.
  2. Carefully open the tube and add 100ul of sterile water to dissolve the DNA.
  3. Close the tube and incubate for 10 minutes at room temperature.
  4. Briefly vortex the tube and then do a quick spin (less than 5000xg) to concentrate the liquid at the bottom.
  5. Store the suspended plasmid at -20°C. The DNA is stable for at least one year from date of shipping when stored at -20°C.

**RefSeq:** [NM\\_014250.1](#), [NP\\_055065.1](#)

**RefSeq Size:** 4121 bp

**RefSeq ORF:** 1478 bp

**Locus ID:** 10042

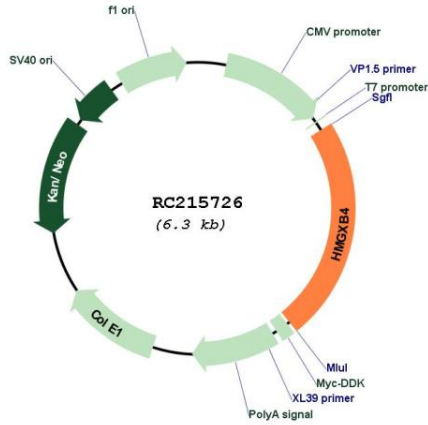
**Cytogenetics:** 22q12.3

**Protein Families:** Transcription Factors

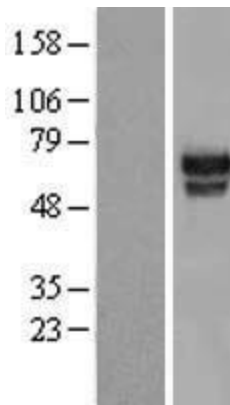
**MW:** 53 kDa

**Gene Summary:** High mobility group (HMG) proteins are nonhistone chromosomal proteins. See HMG2 (MIM 163906) for additional information on HMG proteins.[supplied by OMIM, Nov 2010]

**Product images:**



Circular map for RC215726



Western blot validation of overexpression lysate (Cat# [LY415406]) using anti-DDK antibody (Cat# [TA50011-100]). Left: Cell lysates from untransfected HEK293T cells; Right: Cell lysates from HEK293T cells transfected with RC215726 using transfection reagent MegaTran 2.0 (Cat# [TT210002]).