

Product datasheet for **RC215725**

Arylsulfatase J (ARSJ) (NM_024590) Human Tagged ORF Clone

Product data:

Product Type:	Expression Plasmids
Product Name:	Arylsulfatase J (ARSJ) (NM_024590) Human Tagged ORF Clone
Tag:	Myc-DDK
Symbol:	Arylsulfatase J
Synonyms:	ASJ
Mammalian Cell Selection:	Neomycin
Vector:	pCMV6-Entry (PS100001)
E. coli Selection:	Kanamycin (25 ug/mL)



[View online »](#)

ORF Nucleotide Sequence:

>RC215725 ORF sequence
 Red=Cloning site Blue=ORF Green=Tags(s)

TTTTGTAATACGACTCACTATAGGGCGGCCGGAATTCGTCGACTGGATCCGGTACCGAGGAGATCTGCC
 GCC**CGCATCGCC**

ATGGCTCCAGGGGCTGTGCGGGGCATCCGCCTCCGCCTTCTCCACAGGCCTGTGTCTGTCTGAAAGA
 TGCTAGCAATGGGGCGCTGGCAGGATTCTGGATCCTCTGCCTCCTCACTTATGGTTACCTGTCTGGGG
 CCAGGCCTTAGAAGAGGAGGAAGAAGGGCCTTACTAGCTCAAGCTGGAGAGAACTAGAGCCCAGCACA
 ACTTCCACCTCCCAGCCCATCTCATTTTCATCTAGCGGATGATCAGGGATTTAGAGATGTGGTTACC
 ACGGATCTGAGATTAACACCTACTCTTGACAAGCTCGCTGCCGAAGGAGTTAACTGGAGAACTACTA
 TGTCCAGCCTATTTGCACACCATCCAGGAGTCAGTTTATTACTGGAAAGTATCAGATACACACCGGACTT
 CAACATTCTATCATAAGACCTACCCAACCAACTGTTTACCTCTGGACAATGCCACCCTACCTCAGAAAC
 TGAAGGAGTTGGATATCAACGCATATGGTCGAAAAATGGCACTGGGTTTTTACAGAAAAGAATGCAT
 GCCCACCAGAAGAGGATTTGATACCTTTTTGGTTCCCTTTTGGGAAGTGGGATTACTATACACTAC
 AAATGTGACAGTCTGGGATGTGTGGCTATGACTTGTATGAAAACGACAATGCTGCCTGGGACTATGACA
 ATGGCATATACTCCACACAGATGTACACTCAGAGAGTACAGCAAATCTTAGCTTCCCATAAACCCACAAA
 GCCTATATTTTTATATATGGCTATCAAGCTGTTCACTACCCTGCAAGCTCCTGGCAGGTATTTGCAA
 CACTACCGATCCATTATCAACATAAACAGGAGGAGATATGCTGCCATGCTTCTGCTTAGATGAAGCAA
 TCAACAACGTGACATTGGCTCTAAAGACTTATGGTTTCTATAACAACAGCATTATCATTTACTCTCAGA
 TAATGGTGGCCAGCCTACGGCAGGAGGGAGTAACTGGCCTCTCAGAGGTAGCAAAGGAACATATTGGAA
 GGAGGGATCCGGGCTGTAGGCTTTGTGCATAGCCCACTTCTGAAAAACAAGGGAACAGTGTGAAGGAAC
 TTGTGCACATCACTGACTGGTACCCCACTCTCATTTCACTGGAAGGACAGATTGATGAGGACATTC
 ACTAGATGGCTATGATATCTGGGAGACCATAAGTGAGGGTCTTCGCTCACCCCGAGTAGATATTTGCAT
 AACATTGACCCCATATACACCAAGGCAAAAAATGGCTCCTGGGCAGCAGGCTATGGGATCTGGAACACTG
 CAATCCAGTCAGCCATCAGAGTGCAGCACTGGAATTTGCTTACAGGAAATCCTGGCTACAGCGACTGGGT
 CCCCCCTCAGTCTTTCAGCAACCTGGGACCGAACCAGGTCACAAATGAACGGATCACCTTGTCAACTGGC
 AAAAGTGTATGGCTTTTCAACATCACAGCCGACCCATATGAGAGGGTGGACCTATCTAACAGGTATCCAG
 GAATCGTGAAGAAGCTCTACGGAGGCTCTCACAGTTCACAAAACTGCAGTGCCGGTCAAGTATCCCCC
 CAAAGACCCAGAAAGTAAACCTAGGCTCAATGGAGGGTCTGGGACCATGGTATAAAGAGGAAACCAAG
 AAAAAGAAGCCAAGCAAAAAATCAGGCTGAGAAAAAGCAAAAGAAAAGCAAAAAAAGAAGAAGAACAGC
 AGAAAGCAGTCTCAGGTTCAACTTGCCATTGAGGTTACTTGTGGA

ACGCGTACGCGGCCGCTCGAGCAGAAACTCATCTCAGAAGAGGATCTGGCAGCAAATGATATCCTGGATT
 ACAAGGATGACGACGATAAGGTTTAA

Protein Sequence:

>RC215725 protein sequence
 Red=Cloning site Green=Tags(s)

MAPRGCAGHPPPPSPQACVCPGKMLAMGALAGFWILCLLTYGYLSWGQALEEEEEGALLAQAGEKLEPST
 TSTSQPHLIFILADDQGRDVGHYHSEIKTPTLDKLAEGVKLENYYVQPICTPSRSQFITGKYQIHTGL
 QHSIIRPTQPNCPLPLDNATLPQKLKEVGYSTHMGKWHLGFYRKECMPTRRGFDFFFGLSGSDYYTHY
 KCDSPGMCYDL YENDNAAWDYDNGIYSTQMYTQRVQQILASHNPTKPIFLYIAYQAVHSPLQAPGRYFE
 HYRSIININRRRYAAML SCLDEAINNVTALALKTYGFYNNSIIYSDNGGQPTAGGSNWPLRSGKGTIWE
 GGIRAVGFVHSPLLKNKGTVCHEL VHITDWPYTLISLAEGQIDEDIQLDGYDIWETISEGLRSPRVDILH
 NIDPIYTKAKNGSWAAGYIWNIAIQSAIRVQHWKLLTGNPGYSDWVPPQSF SNLGNRWHNERITLSTG
 KSVWLFNITADPYERVDLSNRYPGIVKLLRRLSQFNKTAVPVRYPPKDRSNPRLNGGVWGPWYKEETK
 KKKPSKNQAEKKQKSKKKKKKQKAVSGSTCHSGVTCC

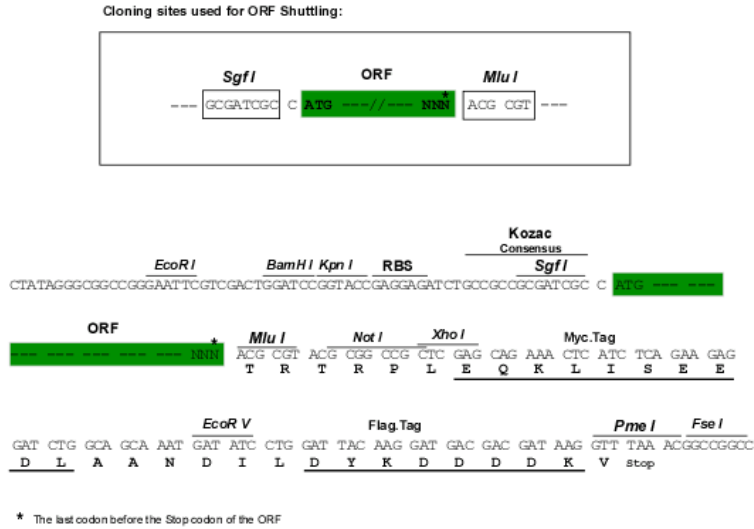
TRTRPLEQKLISEEDLAANDILDYKDDDDKV

Chromatograms:

https://cdn.origene.com/chromatograms/mk6200_b11.zip

Restriction Sites: SgfI-MluI

Cloning Scheme:



ACCN: NM_024590

ORF Size: 1797 bp

OTI Disclaimer: The molecular sequence of this clone aligns with the gene accession number as a point of reference only. However, individual transcript sequences of the same gene can differ through naturally occurring variations (e.g. polymorphisms), each with its own valid existence. This clone is substantially in agreement with the reference, but a complete review of all prevailing variants is recommended prior to use. [More info](#)

OTI Annotation: This clone was engineered to express the complete ORF with an expression tag. Expression varies depending on the nature of the gene.

Components: The ORF clone is ion-exchange column purified and shipped in a 2D barcoded Matrix tube containing 10ug of transfection-ready, dried plasmid DNA (reconstitute with 100 ul of water).

- Reconstitution Method:
1. Centrifuge at 5,000xg for 5min.
 2. Carefully open the tube and add 100ul of sterile water to dissolve the DNA.
 3. Close the tube and incubate for 10 minutes at room temperature.
 4. Briefly vortex the tube and then do a quick spin (less than 5000xg) to concentrate the liquid at the bottom.
 5. Store the suspended plasmid at -20°C. The DNA is stable for at least one year from date of shipping when stored at -20°C.

RefSeq: [NM_024590.4](#)

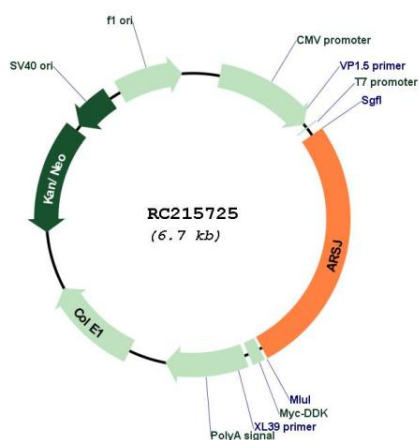
RefSeq Size: 4689 bp

RefSeq ORF: 1800 bp

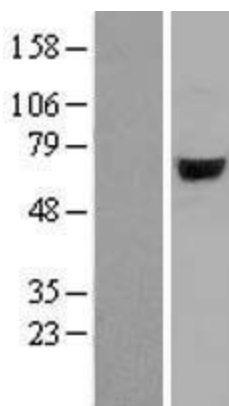
Locus ID: 79642

UniProt ID: [Q5FYB0](#)
Cytogenetics: 4q26
Protein Families: Druggable Genome, Secreted Protein
MW: 67.2 kDa
Gene Summary: Sulfatases (EC 3.1.5.6), such as ARSJ, hydrolyze sulfate esters from sulfated steroids, carbohydrates, proteoglycans, and glycolipids. They are involved in hormone biosynthesis, modulation of cell signaling, and degradation of macromolecules (Sardiello et al., 2005 [PubMed 16174644]).[supplied by OMIM, Mar 2008]

Product images:



Circular map for RC215725



Western blot validation of overexpression lysate (Cat# [LY403007]) using anti-DDK antibody (Cat# [TA50011-100]). Left: Cell lysates from untransfected HEK293T cells; Right: Cell lysates from HEK293T cells transfected with RC215725 using transfection reagent MegaTran 2.0 (Cat# [TT210002]).