

Product datasheet for RC215721

ZNF688 (NM_001024683) Human Tagged ORF Clone

Product data:

Product Type:	Expression Plasmids
Product Name:	ZNF688 (NM_001024683) Human Tagged ORF Clone
Tag:	Myc-DDK
Symbol:	ZNF688
Mammalian Cell Selection:	Neomycin
Vector:	pCMV6-Entry (PS100001)
E. coli Selection:	Kanamycin (25 ug/mL)
ORF Nucleotide Sequence:	>RC215721 representing NM_001024683 Red=Cloning site Blue=ORF Green=Tags(s)

TTTTGTAATACGACTCACTATAGGGCGGCCGGAATTCGTCGACTGGATCCGGTACCGAGGAGATCTGCC
GCC**CGATCGCC**

ATGCCGAGGTCTCCGCTGCGCTCCAGTCTGTCAACAGAGGCTTCAGGACCGGGGTCCCTTCAAATGCC
CCGCCAGTCCCAGGCCAATCACCGCGCAGCTTCTCCGGGATCGTCGCAATCATCGGCCGTTGCGTATT
GCGGGTACAGAGGGGATCCCAGGCCCAAACAGCCCTCATCTTTGGATGGAACAGGAGAGTGAGGCT
TGGAGCCCCGCCAGGATCCTGAGAAGGGGAAAGACTGGGAGGAGCTCGGAGAGGAGATGTCCCAA
ACAGGAAGGAAGAGAACCGGAGGAAGTCCCAAGAGCCAAAGGGCCTAGAAAGGCTCCTGTGAAGGAGAG
TCCTGAAGTGCTGGTGGAAACGCAACCTGACCCAGCTATTAGCGTGGCCCCGGCACGGGCACAGCCACCC
AAAAATGCTGCCTGGGACCCGACCACAGGAGCACAGCCCCGGCACCCATACCCAGCATGGATGCTCAGG
CCGGCCAGCGGCCACGTGTGCACGACTGCGGCCGCCGCTTACCTACCCCTCACTGCTGGTCAGCCA
CAGGCGCATGCACTCGGGGAGCGGCTTTCCCTGCCCGAGTGTGGCATGCGCTTCAAGAGGAAGTTC
GCAGTGAAGCGCACAGTGGATCCACCGCTCTGCTCCGGGGGGCGGGGGCCGAGGCTGGGATCC
GGGCTGTGCTCGGGCCCCGTCCGAGGTGACCGGGACCCGCCTGTGCTTCCGGCACTACCCAGACAT
CTTCGAGGAGTGCGGC

ACGCGTACGCGGCCGCTCGAGCAGAAACTCATCTCAGAAGAGGATCTGGCAGCAAATGATATCCTGGATT
ACAAGGATGACGACGATAAGGTTTAA



[View online »](#)

Protein Sequence: >RC215721 representing NM_001024683
Red=Cloning site Green=Tags(s)

MPRSPLRSSLSTEASGPRGPFKCPASPRPITAQLLPGSSPIIGRCVLRVQRGFPKPKALISWMEQESEA
 WSPAAQDPEKGERLGGARRGDVFNREEEVEVPRAKGRKAPVKESPEVLVERNPDPAISVAPARAQPP
 KNAAWDPPTGAQPPAPIPSMDAQAGRRHVCTDCGRRFTYPSLLVSHRRMHSGERPFPCPECGMRFKRKF
 AVEAHQWIHRSCSGGRRRRRPGIRAVPRAPVRGDRDPPVLFRRHYDIFEECG

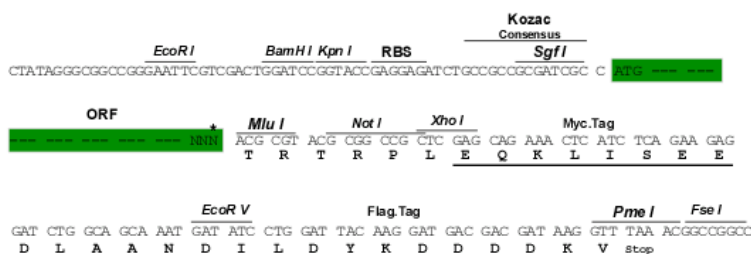
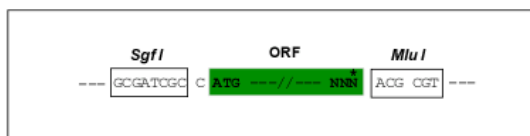
TRTRPLEQKLISEEDLAANDILDYKDDDDKV

Chromatograms: https://cdn.origene.com/chromatograms/ja1476_b09.zip

Restriction Sites: SgfI-MluI

Cloning Scheme:

Cloning sites used for ORF Shuttling:



* The last codon before the Stop codon of the ORF

ACCN: NM_001024683

ORF Size: 786 bp

OTI Disclaimer: The molecular sequence of this clone aligns with the gene accession number as a point of reference only. However, individual transcript sequences of the same gene can differ through naturally occurring variations (e.g. polymorphisms), each with its own valid existence. This clone is substantially in agreement with the reference, but a complete review of all prevailing variants is recommended prior to use. [More info](#)

OTI Annotation: This clone was engineered to express the complete ORF with an expression tag. Expression varies depending on the nature of the gene.

Components: The ORF clone is ion-exchange column purified and shipped in a 2D barcoded Matrix tube containing 10ug of transfection-ready, dried plasmid DNA (reconstitute with 100 ul of water).

Reconstitution Method:

1. Centrifuge at 5,000xg for 5min.
2. Carefully open the tube and add 100ul of sterile water to dissolve the DNA.
3. Close the tube and incubate for 10 minutes at room temperature.
4. Briefly vortex the tube and then do a quick spin (less than 5000xg) to concentrate the liquid at the bottom.
5. Store the suspended plasmid at -20°C. The DNA is stable for at least one year from date of shipping when stored at -20°C.

RefSeq: [NM_001024683.1](#), [NP_001019854.1](#)

RefSeq Size: 1151 bp

RefSeq ORF: 789 bp

Locus ID: 146542

UniProt ID: [P0C7X2](#)

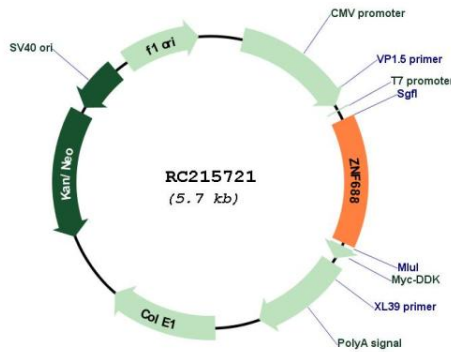
Cytogenetics: 16p11.2

Protein Families: Transcription Factors

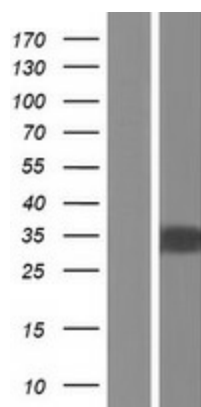
MW: 28.7 kDa

Gene Summary: May be involved in transcriptional regulation.[UniProtKB/Swiss-Prot Function]

Product images:



Circular map for RC215721



Western blot validation of overexpression lysate (Cat# [LY422536]) using anti-DDK antibody (Cat# [TA50011-100]). Left: Cell lysates from untransfected HEK293T cells; Right: Cell lysates from HEK293T cells transfected with RC215721 using transfection reagent MegaTran 2.0 (Cat# [TT210002]).