

Product datasheet for RC215720

ZNF451 (NM_001031623) Human Tagged ORF Clone

Product data:

Product Type:	Expression Plasmids
Product Name:	ZNF451 (NM_001031623) Human Tagged ORF Clone
Tag:	Myc-DDK
Symbol:	ZNF451
Synonyms:	COASTER; dj41711.1
Mammalian Cell Selection:	Neomycin
Vector:	pCMV6-Entry (PS100001)
E. coli Selection:	Kanamycin (25 ug/mL)
ORF Nucleotide Sequence:	>RC215720 representing NM_001031623 Red=Cloning site Blue=ORF Green=Tags(s)

TTTTGTAATACGACTCACTATAGGGCGGCCGGAATTCGTCGACTGGATCCGGTACCGAGGAGATCTGCC
GCC**CGATCGCC**

ATGGGAGACCCGGGTCGGAAATAATAGAATCTGTCCCTCCAGCTGGCCCTGAGGCATCTGAGTCAACAA
CGGATGAAATGAAGACGACATTCAGTTTGTGAGTGAAGGACCATTACGACCTGTTCTTGAATACATTGA
TCTGGTCAGCAGTGATGATGAAGAGCCTAGCACCTTTATACTGATGAGAATATTAACGTAAGACCAT
ATTGATTATCAGAAGGATAAAGTTGCTTAACTCTGGCTCGTCTAGCCCGCCATGTTGAAGTGGAGAAAC
AGCAGAAAAGAAGAGAAGAATAGAGCATTAGAGAAAAAATGATTTTCAGCATGCTCATGGTTACAAGA
ATTGGAATTTATTCGAGGACATTCGATACAGAAGCAGCAAGACTGTGTGTGGACCAGTGGCTAAAATG
CCAGGACTCAAAACAGGCACAATTAATTGTGGAACAAAAAGTTTCATTCCGAAGAGGAGGCCACACGTGGG
TGTCTGGGAAACCAATTTTATGTCCTATAATGCACTGTAACAAGGAGTTTGACAATGGGCACCTTCTCTT
AGGACATTTGAAAAGGTTTCGATCACTCTCCATGTGATCCAACAATTACACTACATGGACCTTTCTCAGC
TCCTTTGCTTGTGTAGTATGTTATAAAAAATTTGTTACTCAACAACAATATAGAGATCACCTTTTGGATA
AGGAAGCCACAGATGATGGACATAACAACAACCTTCTTCTCAGATTATTCAGTGTTTTGCATGTCCAAA
TTGCTTCTCTTTTTCAGCAGAAAAGGAGGAGTGTCAAAGCATATGTCTGGAAAGAATCATTTCATCAG
AGTTTCAAACCTGGGTGATAACAAGGAATTGCACATCCAATATCTTTCCATCTTTTGAAGAAACTTT
TGATCTCTGTGCAAAGATGTTCCCTTTCAAGTTAAGTGTGTGGCCTGCCACAAGACACTGCGTTCCCA
CATGGAGCTCACTGCCCATTTTCAGAGTTCAATTGTGCAAAATGCTGGACCTGTAGCTGTAGCTGAGAAGAGC
ATTACCCAGGTTGCAGAGAAATTCATATTAAGAGGTTATTGTCCAGATTGCAATCAAGTCTTTGTGGATG
AAACCAGCACCCAAAATCATAAGCAGAATTGAGGACACAAAGTCCGAGTCATTAAGTCAAGTGAAGAAATC
AGTCTTACTCTATTGCCACAGCAGCGAAGGGAACAAGGATCCTTCTTCTGACTTGCATTTATTGTTGGAT
CAATCAAAATTTTCATCACTTAAAAGAACCATGTCTATTAAGAATCTAGCTCACTGGAGTGCATTGCCA
TTCCAAAAAAGAAGATGAATTTAAAAGATAAAAAGCCATGAAGGTGTTGCTGTGTCCAGAAAAGAAAATC
AGTAGTTAAAACCTGGTCTGTGAATGCAATCAGCGATTCCAAGTGAAGATGCAGTAGAAAAGCATGTT



[View online >](#)

TTCTCAGCAAACACAATGGGTTATAAATGTGTGGTCTGTGAAAGGTATGTGATGATTCAGGGGTCATTC
 GTTTACACATGAGCCGGATTACGGAGGGGCACATTTAAATAACTTTCTTTTCTGGTGTCCGGACATGCAA
 AAAGGAGTTAACAAGGAAAGATACTATCATGGCACATGTGACTGAATTCATAATGGACACAGATATTTT
 TATGAGATGGATGAGGTAGAAGGTGAAACTTTGCCATCATCTCTACAACATTGGATAATTTGACTGCTA
 ACAAGCCTTCATCAGCTATTACTGTTATTGATCATTCCCCGGCAAATAGTTCTCCGAGGGGTAATGGCA
 ATGCCGGATTGTGAAGATATGTTTGTCCAGGAATATGTAACAGCACTGCATGTCTTTGGCAAGC
 CACAAGTTTCATAGATACAGCTGTGCTACTGCAGAAAGCCTTTTCATAAGATAGAAACATTGTACCGAC
 ATTGCCAAGATGAGCATGACAATGAGATAAAGATTAATACTTCTGTGGGCTTTGTGATCTTATCTTTAA
 TGTGGAAGAAGCATTCTGAGTCATTATGAGGAGCACCACAGCATAGATTATGATTTGTGTCAGAAAAA
 ACTGAACTTCAATTAACCGAAGATGATTTTCCAGTAATAGAGACCAGTAACCAGTTAACTTGTGGTT
 GCCGTGAGAGTTACATCTGTAAGTCAACAGAAAAAGATTATAGCAGATGTCTCCAAATCATGCTGGA
 TAAAGGAAAACCTGGTTTCGCTGCAGTTTATGTTCCGCAACAGCACAGAAATTAACCGACATGAACACT
 CATATCCATCAAGTGCACAAAGAAAAGAGTGATGAGGAGGAGCAGCAGTATGTAATCAAGTGTGGCACCT
 GCACAAAGCATTTCATGATCCTGAGAGTGCACAGCAGCATTTCATAGAAAACATTGCTTCTTACAGAA
 ACCCAGTGTGGCTCATTTTGGATCTGAAAAATCAAACCTGTACAAGTTTACTGCTAGTGCCTCACATACA
 GAGAGAAAACGAAACAGGCAATAAATATTCAAAAAGTTTAGACATGGAGAAAGGAGTTGAGAATGACC
 TAAGCTATCAGAATATAGAGGAAGAAATTTGTTGAGCTTCCAGATTTGGATTACCTGCGAACCATGACTCA
 TATAGTCTTTGTAGATTTTGATAACTGGTCAAACCTTTTTTGGTCACTACCAGGGCATCTAAACCAAGGA
 ACATTTATTTGGGGCTTTCAAGGAGGAAACACCAATTGGAAGCCTCCGCTCAACTGTAAGATTTATAACT
 ACCTGAACAGGATTGGATGCTTCTTCTTATCCTCGTGTAGTAAAAGAAAAGATGCTGCTGATTTTGC
 CATATGTATGCATGCTGGCCGTAGATGAACAACTACCAAGCAAAATCCTTTACCATCCTCTCAGGA
 GATCAAGGTTTTCTGGAGCTAGAGAATCAATTAAGAAGACTCAGAGGCCAGCTCATATACTAAACCCCTC
 ACCACTTAGAGGGAGATATGATGTGCTTGTAAATAGCATATCTGATACCACAAAGAATGTGACAG
 TGATGATAACATGGGTGCCAAAAATACTTCAATAGGAGAAGATTTATATCCACAGAAGATGTGGAAATTA
 GAAGAAGCTATTAGAAGAAGTCTTGAGGAATG

ACGCGTACGCGGCCGCTCGAGCAGAACTCATCTCAGAAGAGGATCTGGCAGCAATGATATCCTGGATT
 ACAAGGATGACGACGATAAGGTTTAA

Protein Sequence:

>RC215720 representing NM_001031623

Red=Cloning site Green=Tags(s)

MGDPGSEIIESVPPAGPEASESTTDENEDDIQFVSEGPLRPVLEYIDLVSDDDEEPSTSYTDENIKRKDH
 IDYQKDKVALTLARLARHVEVEKQKKEKNRAFREKIDFQHAHGLQELEFIRGHSDTEAARLCVDQWLKM
 PGLKTGTINCGTKSSFRGGHTWVSGKPIPCIMHCNKEFDNGHLLLGLKRFDHSPCDPTITLHGPFSS
 SFACVVCYKFFVTQQYRDHLFDKEATDDGHNNLLPQIIQCFACPNCFLLFSRKEECSKHMSGKNHFHQ
 SFKLDGNKGIAPHSFSPFAKLLISLCKDVPFQVKCVACHKTLRSHMELTAHFRVHCRNAGPVVAEKS
 ITQVAEKFILRGYCPDCNQVFVDETSTQNHKQNSGHKVRVINSVEESVLLYCHSSEGNKDPSSDLHLLLD
 QSKFSSLKRTMSIKESSLECIAPKKMNLKDKSHEGVACVQKEKSVVKTWFCECNQRFPSSEDAVEKHV
 FSANTMGYKCVVCGKVCDDSGVIRLHMSRIHGAHLNNFLFWCRTCKKELTRKDTIMAHVTEFHNGHRYF
 YEMDEVEGETLPSSSTLTDNLANKPSSAITVIDHSPANSSPRGKWQCRICEDMFDSQEYVKQHCMSLAS
 HKFHRYSAHCRKPFHKIETLYRHCQDEHDNEIKIKYFCGLCDLIFNVEEAFLSHYEEHHSIDYVFVSEK
 TETSIKTEDDFPVIETSNQLTCGCRESYICKVNRKEDYSRCLQIMLDKGLWFRCSLCSATAQNL TDMNT
 HIHQVHKEKSDEEEQQYVIKCGTCTKAFHDPESAQQHFHRKHCFLLQKPSVAHFGSEKSNLYKFTASASHT
 ERKLLKQAINYSKSLDMEKGVENDLSYQNIIEEIVELPDLTYLRTMTHIVVDFDNWSNFFGHLPGHLNQG
 TFIWGFQGGNTNWKPLNCKIYNYLNRIGCFLLHPRCSKRKDAADFAICMHAGRLDEQLPKQIPFTILSG
 DQGFLELENQFKKTQRPAILNPHHLEGDMCALLNSISDTTKECSDSDNMGAKNTSIGEEFISTEDVEL
 EEAIRRSLEEM

TRTRPLEQKLISEEDLAANDILDYKDDDDKV

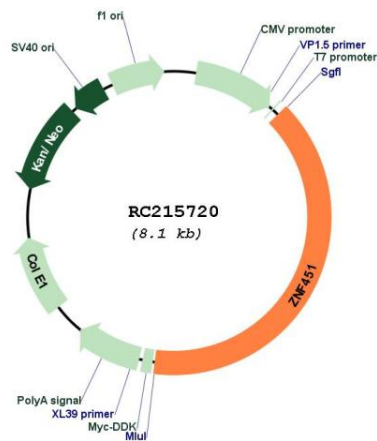
Chromatograms:
https://cdn.origene.com/chromatograms/mk8028_h06.zip

Cytogenetics: 6p12.1
Protein Families: Transcription Factors

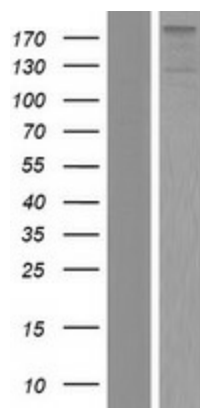
MW: 121.3 kDa

Gene Summary: E3 SUMO-protein ligase; has a preference for SUMO2 and SUMO3 and facilitates UBE2I/UBC9-mediated sumoylation of target proteins (PubMed:26524493, PubMed:26524494). Plays a role in protein SUMO2 modification in response to stress caused by DNA damage and by proteasome inhibitors (in vitro). Required for MCM4 sumoylation (By similarity). Has no activity with SUMO1 (PubMed:26524493). Preferentially transfers an additional SUMO2 chain onto the SUMO2 consensus site 'Lys-11' (PubMed:26524493). Negatively regulates transcriptional activation mediated by the SMAD4 complex in response to TGF-beta signaling. Inhibits EP300-mediated acetylation of histone H3 at 'Lys-9' (PubMed:24324267). Plays a role in regulating the transcription of AR targets (PubMed:18656483).[UniProtKB/Swiss-Prot Function]

Product images:



Circular map for RC215720



Western blot validation of overexpression lysate (Cat# [LY422216]) using anti-DDK antibody (Cat# [TA50011-100]). Left: Cell lysates from untransfected HEK293T cells; Right: Cell lysates from HEK293T cells transfected with RC215720 using transfection reagent MegaTran 2.0 (Cat# [TT210002]).