

## Product datasheet for **RC215719**

### Lipolysis Stimulated Lipoprotein Receptor (LSR) (NM\_205835) Human Tagged ORF Clone

#### Product data:

Product Type:	Expression Plasmids
Product Name:	Lipolysis Stimulated Lipoprotein Receptor (LSR) (NM_205835) Human Tagged ORF Clone
Tag:	Myc-DDK
Symbol:	Lipolysis Stimulated Lipoprotein Receptor
Synonyms:	ILDR3; LISCH7
Mammalian Cell Selection:	Neomycin
Vector:	pCMV6-Entry (PS100001)
E. coli Selection:	Kanamycin (25 ug/mL)



[View online »](#)

**ORF Nucleotide Sequence:**

>RC215719 representing NM\_205835  
 Red=Cloning site Blue=ORF Green=Tags(s)

TTTTGTAATACGACTCACTATAGGGCGGCCGGGAATTCGTCGACTGGATCCGGTACCGAGGAGATCTGCC  
 GCC**CGGATCGCC**

ATGCAACAGGACGGACTTGGAGTAGGGACAAGGAACGGAAGTGGGAAGGGGAGGAGCGTGCACCCCTCT  
 GGCTTGGTGCAGCGCCGCGCCCTAAGGTACTTTGGAAGGACGCGCGGCCAGACGCGCCAGACGGC  
 CGCGATGGCGCTGTTGGCCGGCGGGCTCTCCAGAGGGCTGGGCTCCACCCGCGCCGCGAGGCCGGAC  
 GCGGTCTGTTGCTGGCTTCTGCTTAGCACCTGGTGCACAGCTCTGCCAGGGCCATCCAGGTGACCG  
 TGTCCAACCCCTACCACGTGGTATCCTCTCCAGCTGTGACCTGCCGTACCTACCAGATGACCTC  
 GACCCCAACGCAACCCATCGTCACTGGAAGTACAAGTCTTTCTGCCGGGACCGCATCGCCGATGCCTC  
 TCCCCGGCAGCGTGCACAACAGCTCAATGCCAGCTGGCAGCCGGGAACCCAGGCTACAACCCCTACG  
 TTGAGTGCCAGGACAGCGTGCACACCGTCAAGGTCGTGGCCACCAAGCAGGGCAACGCTGTGACCTGGG  
 AGATTACTACCAGGGCCGAGGATTACCATCACCGGAAATGCTGACCTGACCTTTGACCAGACGGCGTGG  
 GGGGACAGTGGTGTATTACTGCTCCGTGGTCTCAGCCAGGACCTCCAGGGGAACAATGAGGCCCTACG  
 CAGAGCTCATCGTCTTGTGTATGCCGCGGCAAAAGCAGCCACCTCAGGTGTTCCAGCATTATGCCCC  
 CAGCACCTATGCCACCTGTCTCCCGCAAGACCCACCCACCCAGCTATGATCCCATGGGCCCTGCC  
 TACAACGGGTACCTGGAGGATACCCTGGAGACGTTGACAGGAGTAGCTCAGCTGGTGGCCAAGGCTCCT  
 ATGTACCCTGCTTCGGGACACGGACAGCAGTGTGGCCTCTGAAGTCCGAGTGGCTACAGGATTCAGGC  
 CAGCCAGCAGGACGACTCCATGCGGGTCTGTACTACATGGAGAAGGAGCTGGCCAACCTCGACCTTCT  
 CGACCTGGCCCCCAGTGGCCGTGTGGAGCGGGCCATGAGTGAAGTCACTCCCTCCACGAGGACGACT  
 GGCGATCTGGCCTTCCCGGGCCCTGCCCTCACCCGATCCGGGATGAGGAGTGGGGTGGCCACTCCCC  
 CCGGAGTCCCAGGGATGGGACCAAGAGCCCGCCAGGGAGCAGGAGCGGGGGCTGGCGGGCCAGGCGG  
 CCCCAGGGCCGCTCCGTGGACGCGCTGGACGACCTCACCCCGCCGAGCACCGCCGAGTACGGGAGCAGGT  
 CTCCACGAGTAATGGTGGGAGAAGCCGGGCTACATGCCCCCGGAGCCGAGCCGGGACGACTCTA  
 TGACCAAGACGACTCGAGGGACTTCCCACGCTCCCGGGACCCCACTACGACGACTTCAGGTCTCGGGAG  
 CGCCCTCTGCCACCCAGGTCCACCACCACCGTACCCGGGACCTCGGGACAACGGCTCCAGGTCCG  
 GGGACCTCCCCTATGATGGGCGGCTACTGGAGGAGGCTGTGAGGAAGAAGGGGTCGGAGGAGAGGAGGAG  
 ACCCCACAAGGAGGAGGAGGAAGAGGCCTACTACCCGCCCGCCGCCCCCGTACTCGGAGACCGACTCG  
 CAGGCGTCCCAGAGCGCAGGCTCAAGAAGAACTTGGCCCTGAGTCGGGAAAGTTTAGTCGTC

**ACGCGT**ACGCGGGCCGCTCGAGCAGAAACTCATCTCAGAAGAGGATCTGGCAGCAAATGATATCCTGGATT  
 ACAAGGATGACGACGATAAGGTTTAA

**Protein Sequence:**

>RC215719 representing NM\_205835  
 Red=Cloning site Green=Tags(s)

MQQDGLGVGTRNGSGKGRSVHPSWPWCAPRPLRYFGRDARARRAQTAAAMALLAGGLSRGLGSHPAAGR  
 AVVFVWLLLSTWCTAPARAIQVTVSNPYHVILFQPVTLPCTYQMTSTPTQPIVIVWKYSFCRDRIADAF  
 SPASVDNQLNAQLAAGNPGYNPYVECDQSVRTRVAVTKQGNVTLGDYQGRRIITGNADLTFDQTAW  
 GDSGVYYCSVSAQDLQGNNEAYAELIVLVYAAGKAATSGVPSIYAPSTY AHL SPAKTPPPAMIPMPGA  
 YNGYPPGYPGDVRSSSAGGQGSYVPLLRDTSVASEVRSYRIQASQQDDSMRVLYYMEKELANFDPS  
 RPPGPPSGRVERAMSEVTS LHEDDWRSRPSRGPALTPIRDEEWGGHSPRSRPGWDQEPAREQAGGGWRARR  
 PRARSDALDDLTPPSTAESGSRSPSTNGGRSRA YMPRSRSDLDYQDDSRDFPRSRDPHYDDFRSRE  
 RPPADPRSHHHRTRDPRDNGSRGDLPYDGRLLLEEAVRKKGSEERRRPHKEEEEEAYYPAPPYSETDS  
 QASRERRLKKNLALSRESLVV

**TR**TRPLEQKLISEEDLAANDILDYKDDDDKV

**Chromatograms:**

[https://cdn.origene.com/chromatograms/ja1869\\_f01.zip](https://cdn.origene.com/chromatograms/ja1869_f01.zip)

**Restriction Sites:**

Sgfl-Mlul

**Cloning Scheme:**



**ACCN:** NM\_205835

**ORF Size:** 1743 bp

**OTI Disclaimer:** Due to the inherent nature of this plasmid, standard methods to replicate additional amounts of DNA in E. coli are highly likely to result in mutations and/or rearrangements. Therefore, OriGene does not guarantee the capability to replicate this plasmid DNA. Additional amounts of DNA can be purchased from OriGene with batch-specific, full-sequence verification at a reduced cost. Please contact our customer care team at [custsupport@origene.com](mailto:custsupport@origene.com) or by calling 301.340.3188 option 3 for pricing and delivery.

The molecular sequence of this clone aligns with the gene accession number as a point of reference only. However, individual transcript sequences of the same gene can differ through naturally occurring variations (e.g. polymorphisms), each with its own valid existence. This clone is substantially in agreement with the reference, but a complete review of all prevailing variants is recommended prior to use. [More info](#)

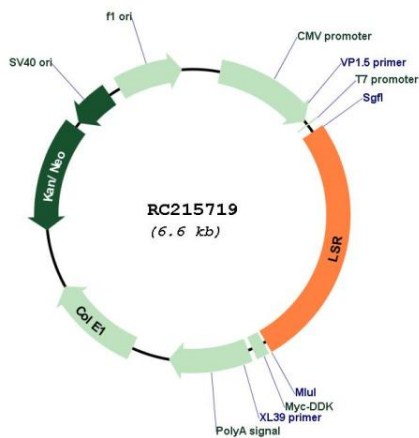
**OTI Annotation:** This clone was engineered to express the complete ORF with an expression tag. Expression varies depending on the nature of the gene.

**Components:** The ORF clone is ion-exchange column purified and shipped in a 2D barcoded Matrix tube containing 10ug of transfection-ready, dried plasmid DNA (reconstitute with 100 ul of water).

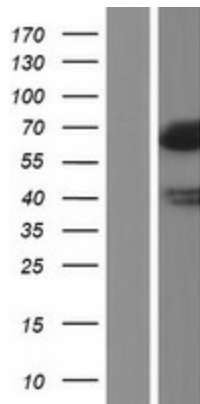
- Reconstitution Method:**
1. Centrifuge at 5,000xg for 5min.
  2. Carefully open the tube and add 100ul of sterile water to dissolve the DNA.
  3. Close the tube and incubate for 10 minutes at room temperature.
  4. Briefly vortex the tube and then do a quick spin (less than 5000xg) to concentrate the liquid at the bottom.
  5. Store the suspended plasmid at -20°C. The DNA is stable for at least one year from date of shipping when stored at -20°C.

**RefSeq:** [NM\\_205835.3](#)  
**RefSeq Size:** 2081 bp  
**RefSeq ORF:** 1602 bp  
**Locus ID:** 51599  
**UniProt ID:** [Q86X29](#)  
**Cytogenetics:** 19q13.12  
**Protein Families:** Druggable Genome, Transcription Factors, Transmembrane  
**MW:** 63.9 kDa  
**Gene Summary:** Probable role in the clearance of triglyceride-rich lipoprotein from blood. Binds chylomicrons, LDL and VLDL in presence of free fatty acids and allows their subsequent uptake in the cells (By similarity).[UniProtKB/Swiss-Prot Function]

**Product images:**



Circular map for RC215719



Western validation with an anti-DDK antibody; L: Control HEK293 lysate R: Over-expression lysate