

Product datasheet for RC215698

Endomucin (EMCN) (NM_016242) Human Tagged ORF Clone

Product data:

Product Type:	Expression Plasmids
Product Name:	Endomucin (EMCN) (NM_016242) Human Tagged ORF Clone
Tag:	Myc-DDK
Symbol:	Endomucin
Synonyms:	EMCN2; MUC14
Mammalian Cell Selection:	Neomycin
Vector:	pCMV6-Entry (PS100001)
E. coli Selection:	Kanamycin (25 ug/mL)
ORF Nucleotide Sequence:	>RC215698 representing NM_016242 Red=Cloning site Blue=ORF Green=Tags(s)

TTTTGTAATACGACTCACTATAGGGCGCCGGGAATTCGTCGACTGGATCCGGTACCGAGGAGATCTGCC
GCC**CGATCGCC**

ATGGAAGTCTCAAGTACCACTTCTTTTTCTTCTGCCAGTATTTGCAGCAGTAACAGCACAGGTGTTT
TAGAGGCAGCTAATAATTCACCTTGTGTTACTACAACAAAACCATCTATAACAACACCAAACACAGAATC
ATTACAGAAAAATGTTGTCACACCAACAACTGGAACAACCTCTAAAGGAACAATCACCAATGAATTACTT
AAAATGTCTCTGATGTCAACAGCTACTTTTTTAACAAGTAAAGATGAAGGATTGAAAGCCACAACCACTG
ATGTCAGGAAGAATGACTCCATCATTTCAAACGTAACAGTAACAAGTGTACACTCCAAATGCTGTTTC
AACATTACAAAGTCCAAACCAAGACTGAACTCAGAGTTCAATTAACAACAGAAATACCAGGTAGT
GTTCTACAACAGATGCATCACCTTCTAAAACCTGGTACATTAACCTCAATACCAGTTACAATCCAGAAA
ACACCTCACAGTCTCAAGTAATAGGCACTGAGGGTGGAAAAATGCAAGCACTTCAGCAACCAGCCGGTC
TTATCCAGTATTATTTGCCGGTGGTTATTGCTTTGATTGTAATAACACTTTCAGTATTGTTCTGGTG
GGTTTGTACCGAATGTGCTGGAAGGCAGATCCGGGCACACCAGAAAAATGGAAATGATCAACCTCAGTCTG
ATAAAGAGAGCGTGAAGCTTCTTACCGTTAAGACAATTTCTCATGAGTCTGGTGAGCACTCTGCACAAGG
AAAAACCAAGAAC

ACGCGTACGCGGCCGCTCGAGCAGAACTCATCTCAGAAGAGGATCTGGCAGCAAATGATATCCTGGATT
ACAAGGATGACGACGATAAGGTTTAA



[View online »](#)

Protein Sequence: >RC215698 representing NM_016242
Red=Cloning site Green=Tags(s)

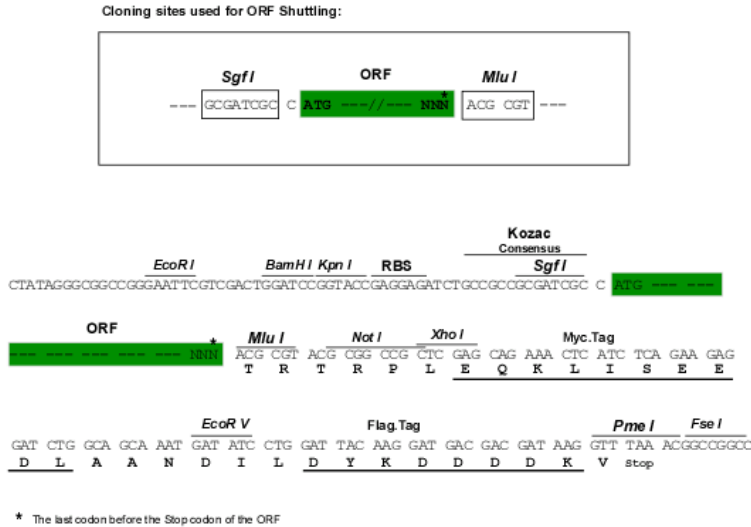
MELLQVTILFLLPSICSSNSTGVLEAANNSLVVTTTKPSITTPNTESLQKNVPTPTGTTTPKGTITNELL
 KMSLMSTATFLT SKDEGLKATTTDVRKNDISIISNVTVTSVTL PNAVSTLQSSKPKTETQSSIKTTEIPGS
 VLQPDASPSKTGTLT SIPVTIPENTSQSQVIGTEGGKNASTSATSRSYSSIIILPVVIALIVITLSVFLV
 GLYRMCWKADPGTPENGNDQPQSDKESVKLLTVKTI SHESGEHSAQGKTKN

TRTRPLEQKLISEEDLAANDILDYKDDDDKV

Chromatograms: https://cdn.origene.com/chromatograms/mk6497_b01.zip

Restriction Sites: SgfI-MluI

Cloning Scheme:



ACCN: NM_016242

ORF Size: 783 bp

OTI Disclaimer: The molecular sequence of this clone aligns with the gene accession number as a point of reference only. However, individual transcript sequences of the same gene can differ through naturally occurring variations (e.g. polymorphisms), each with its own valid existence. This clone is substantially in agreement with the reference, but a complete review of all prevailing variants is recommended prior to use. [More info](#)

OTI Annotation: This clone was engineered to express the complete ORF with an expression tag. Expression varies depending on the nature of the gene.

Components: The ORF clone is ion-exchange column purified and shipped in a 2D barcoded Matrix tube containing 10ug of transfection-ready, dried plasmid DNA (reconstitute with 100 ul of water).

Reconstitution Method:

1. Centrifuge at 5,000xg for 5min.
2. Carefully open the tube and add 100ul of sterile water to dissolve the DNA.
3. Close the tube and incubate for 10 minutes at room temperature.
4. Briefly vortex the tube and then do a quick spin (less than 5000xg) to concentrate the liquid at the bottom.
5. Store the suspended plasmid at -20°C. The DNA is stable for at least one year from date of shipping when stored at -20°C.

RefSeq: [NM_016242.4](#)

RefSeq Size: 1488 bp

RefSeq ORF: 786 bp

Locus ID: 51705

UniProt ID: [Q9ULC0](#)

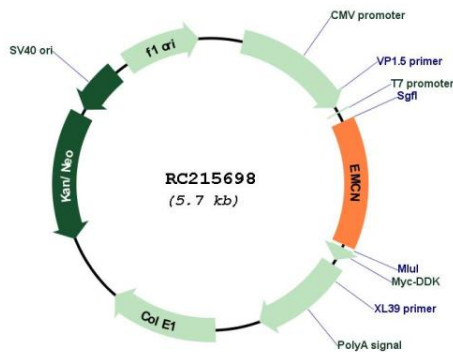
Cytogenetics: 4q24

Protein Families: Transmembrane

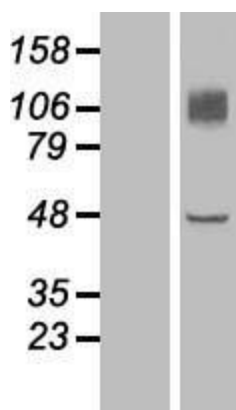
MW: 27.3 kDa

Gene Summary: EMCN is a mucin-like sialoglycoprotein that interferes with the assembly of focal adhesion complexes and inhibits interaction between cells and the extracellular matrix (Kinoshita et al., 2001 [PubMed 11418125]).[supplied by OMIM, Mar 2008]

Product images:



Circular map for RC215698



Western blot validation of overexpression lysate (Cat# [LY414105]) using anti-DDK antibody (Cat# [TA50011-100]). Left: Cell lysates from untransfected HEK293T cells; Right: Cell lysates from HEK293T cells transfected with RC215698 using transfection reagent MegaTran 2.0 (Cat# [TT210002]).