

## Product datasheet for **RC215696**

### ZNF471 (NM\_020813) Human Tagged ORF Clone

#### Product data:

Product Type:	Expression Plasmids
Product Name:	ZNF471 (NM_020813) Human Tagged ORF Clone
Tag:	Myc-DDK
Symbol:	ZNF471
Synonyms:	ERP1; Z1971; Zfp78
Mammalian Cell Selection:	Neomycin
Vector:	pCMV6-Entry (PS100001)
E. coli Selection:	Kanamycin (25 ug/mL)



[View online »](#)

**ORF Nucleotide Sequence:**

>RC215696 ORF sequence  
 Red=Cloning site Blue=ORF Green=Tags(s)

TTTTGTAATACGACTCACTATAGGGCGGCCGGAATTCGTCGACTGGATCCGGTACCGAGGAGATCTGCC  
 GCC**CGGATCGCC**

ATGAATGTTGAAGTAGTAAAAGTCATGCCAGGACTTAGTGACATTCAGGATGTGGCAATAGATTTTT  
 CCCAGGAAGAATGGCAATGGATGAACCCTGCTCAGAAGCGTTTATACAGGAGTATGATGTTGGAGAACTA  
 TCAGAGCCTGGTATCACTTGGTCTTTGCATTTCTAAGCCATATGTGATCTCCTTATTGGAGCAAGGGAGA  
 GAGCCTTGGGAGATGACGAGTGAGATGACAAGAAGCCATTCTCAGATTGGGAATCTATATATGTGACAC  
 AGGAATTACCTCTGAAGCAGTTCATGTATGATGATGCATGCATGGAGGAATTACTAGCTATGGACTTGA  
 GTGTTCCACTTTTGAAGAAAATTGGAATGGGAAGACCTTTTGGAGAAGCAGATGGGAAGTCATGAGATG  
 TTTAGCAAGAAAATAATCACTCATAAAGAAACCATCACTAAGGAAACAGAATTCAAATATACTAAAT  
 TTGGGAAATGTATCCATCTGGAAAACATAGAAGAGATTTTATAATCACACATCAGATAAAAAAGCTT  
 CTCAAAAATTCTATGGTAATAAAACACAAGAAAGTCTATGTAGGAAAGAAGCTTTTTAAATGTAATGAA  
 TGTGACAAAACCTTACCCTATAGCTCATCCCTACTGTTCAATTTAGAATTCATACTGGTAAAAACCAT  
 ATGCATGTGAGGAATGTGAAAAAGCCTTCAAGCAAAGGCAACACCTTGCTCAACATCACAGAACACATAC  
 TGGAGAGAAAACCTTTGAAATGTAAGAATGTAGGAAAGCCTTCAAACAAAGTGAACACCTTATTCAGCAT  
 CAAAGAATTCATACTGGAGAAAAACCATATAAATGTAAGGAATGCAGAAAAGCCTTCAGACAGCCTGCAC  
 ACCTTGCTCAGCATCAGAGAATTCATACTGGAGAGAAACCTATGAATGTAAGAATGTGGCAAAGCCTT  
 CAGTGATGGCTCGTCTTTGCTCGACATCAGAGATGTCACACTGGCAAAGACCTATGAATGTATTGAG  
 TGTGGAAAGGCTTTTAGGTATAACACATCTTTTATTGTCGACTGGAGGAGTTATCATACTGGAGAGAAGC  
 CTTTTAATTGCATTGATTGTGGAAAGCCTTCAGTGTTACATAGGACTTATTCTGCATAGGAGAATTCA  
 TACAGGAGAGAAAACCTTACAAATGTGATGTGTGGAAAAACCTTCAGCTCAGGTTCCATCCCGTACTGTA  
 CATCAGAGAATTCATACAGGAGAGAAAACCTTATGAATGTGATATATGTGGAAAGATTTTAGCCATCATG  
 CATCACTCACTCAGCATCAAAGAGTACATTCTGGAGAGAAAACCGTATGAATGCAAGGAATGTGGAAAGC  
 CTTTAGGCAGAATGTACACCTTGTAGTCATTTGAGAATTCATACTGGTAAAAACCTATGAATGTAAA  
 GAATGTGGAAAAGCTTTTAGAATCAGTTCACAGCTGGCTACTCATCAGAGAATTCATACTGGAGAGAAGC  
 CTTATGAATGTATTGAATGTGAAATGCTTTCAAACAGAGATCACACCTTGCCCAACATCAGAAAACCTCA  
 TACAGGAGAGAAAACCTTATGAGTGAATGAATGCGGGAAAGCCTTCAGCCAAACTCCAATCTTACTCAA  
 CATCAAAGAATTCATACTGGAGAGAAAACCTATAAATGTACTGAATGTGGAAAGGCTTTTGTGATAGCT  
 CATCCTGTGCTCAGCATCAAAGACTCCACACTGGCCAAAGGCCCTATCAGTGTTTTGAATGTGGAAAGGC  
 GTTCAGAAGAAAGTTATCCTTAATTTGTATCAAGAAGTCATACTGGAGAAGAACCT

**ACGCGT**ACGCGGCCGCTCGAGCAGAAACTCATCTCAGAAGAGGATCTGGCAGCAATGATATCCTGGATT  
 ACAAGGATGACGACGATAAGGTTTAA

**Protein Sequence:**

>RC215696 protein sequence  
 Red=Cloning site Green=Tags(s)

MNVEVVKVMPQDLVTFKDVAIDFSQEEWQWMPAQKRLYRSMMLENYQSLVSLGLCISKPYVVISLLEQGR  
 EPWEMTSEMTRSPFSDWESIYVTQELPLKQFMYDDACMEGITSYGLECSTFEENWKWEDLFEKQMGSHM  
 FSKKEIITHKETITKETEFKYTKFGKCIHLENIEESIYNHTSDKKSFSKNSMVIKHKVYVYGKLFKCN  
 CDKTFTHSSSLTVHFRIHTGEKPYACEECGKAFKQRLAQHHRHTHTGEKLFECCKRKAQSEHLIQH  
 QRIHTGEKPYKCKEKRKAQFQPAHLAQHQRIHTGEKPYECKEKGAFSDGSSFARHQRCHTGKRPYECIE  
 CGKAFRYNTSFIHRSYHTGEKPFNCIDCGKAFSVHIGLILHRRHTHTGEKPYKCDVCGKTFSSGSRTV  
 HQRIHTGEKPYECDICGKDFSHHASLTQHQRVHSGEKPYECKEKGAFRQNVHLVSHLRHTHTGEKPYECK  
 ECGKAFRISSQLATHQRIHTGEKPYECIECGNAFKQSHLAQHQTHTHTGEKPYECNECGKAFSQTSNLQT  
 HQRIHTGEKPYKTECGKAFSDSSSCAQHQRLHTGQRPYQCFECGKAFFRKLSLICHQRSHTGEEP

**TR**TRPLEQKLISEEDLAANDILDYKDDDDKV

**Chromatograms:** [https://cdn.origene.com/chromatograms/mk6441\\_b09.zip](https://cdn.origene.com/chromatograms/mk6441_b09.zip)

**Restriction Sites:** SgfI-MluI

**Cloning Scheme:**



**ACCN:** NM\_020813

**ORF Size:** 1878 bp

**OTI Disclaimer:** The molecular sequence of this clone aligns with the gene accession number as a point of reference only. However, individual transcript sequences of the same gene can differ through naturally occurring variations (e.g. polymorphisms), each with its own valid existence. This clone is substantially in agreement with the reference, but a complete review of all prevailing variants is recommended prior to use. [More info](#)

**OTI Annotation:** This clone was engineered to express the complete ORF with an expression tag. Expression varies depending on the nature of the gene.

**Components:** The ORF clone is ion-exchange column purified and shipped in a 2D barcoded Matrix tube containing 10ug of transfection-ready, dried plasmid DNA (reconstitute with 100 ul of water).

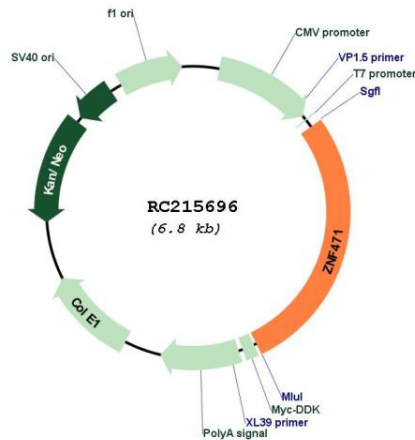
- Reconstitution Method:**
1. Centrifuge at 5,000xg for 5min.
  2. Carefully open the tube and add 100ul of sterile water to dissolve the DNA.
  3. Close the tube and incubate for 10 minutes at room temperature.
  4. Briefly vortex the tube and then do a quick spin (less than 5000xg) to concentrate the liquid at the bottom.
  5. Store the suspended plasmid at -20°C. The DNA is stable for at least one year from date of shipping when stored at -20°C.

**RefSeq:** [NM\\_020813.4](#)

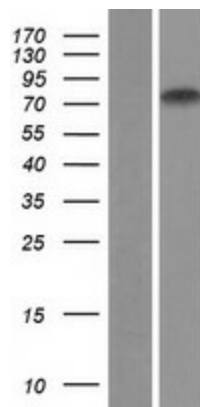
**RefSeq Size:** 4967 bp

**RefSeq ORF:** 1881 bp

**Locus ID:** 57573  
**UniProt ID:** [Q9BX82](#)  
**Cytogenetics:** 19q13.43  
**Protein Families:** Transcription Factors  
**MW:** 73.1 kDa  
**Gene Summary:** May be involved in transcriptional regulation.[UniProtKB/Swiss-Prot Function]

**Product images:**


Circular map for RC215696



Western blot validation of overexpression lysate (Cat# [LY412284]) using anti-DDK antibody (Cat# [TA50011-100]). Left: Cell lysates from untransfected HEK293T cells; Right: Cell lysates from HEK293T cells transfected with RC215696 using transfection reagent MegaTran 2.0 (Cat# [TT210002]).