

Product datasheet for RC215695

BMP10 (NM_014482) Human Tagged ORF Clone

Product data:

Product Type:	Expression Plasmids
Product Name:	BMP10 (NM_014482) Human Tagged ORF Clone
Tag:	Myc-DDK
Symbol:	BMP10
Mammalian Cell Selection:	Neomycin
Vector:	pCMV6-Entry (PS100001)
E. coli Selection:	Kanamycin (25 ug/mL)
ORF Nucleotide Sequence:	>RC215695 ORF sequence Red=Cloning site Blue=ORF Green=Tags(s)

TTTTGTAATACGACTCACTATAGGGCGGCCGGAATTCGTCGACTGGATCCGGTACCGAGGAGATCTGCC
GCC**CGATCGCC**

ATGGGCTCTCTGGTCTGACACTGTGCGCTCTTTCTGCCTGGCAGCTTACTTGGTTTCTGGCAGCCCCA
TCATGAACCTAGAGCAGTCTCCTCTGGAAGAAGATATGTCCTCTTTGGTGATGTTTTCTCAGAGCAAGA
CGGTGTCGACTTTAACACACTGCTCCAGAGCATGAAGGATGAGTTTCTTAAGACTAAACCTCTCTGAC
ATCCCCACGCAGGATTCAGCCAAGGTGGACCCACCAGAGTACATGTTGGAACCTACAACAAATTTGCCA
CAGATCGGACTCCATGCCCTCTGCCAACATCATTAGGAGTTTCAAGAATGAAGATCTGTTTTCCAGCC
GGTCAGTTTTTAATGGGCTCCGAAAATACCCCTCCTCTTCAATGTGTCCATTCTCACCATGAAGAGGTC
ATCATGACTGAACTTAGGCTATACACACTGGTGCAAAGGGATCGTATGATATACGATGGAGTAGACCGGA
AAATTACCATTTTTGAAGTGCTGGAGAGCAAAGGGATAATGAGGGAGAAAGAAACATGCTGGTCTTGGT
GTCTGGGGAGATATATGGAACCAACAGTGAGTGGGAGACTTTTGATGTCACAGATGCCATCAGACGTTGG
CAAAAGTCAGGCTCATCCACCCACCAGCTGGAGGTCCACATTGAGAGCAAACACGATGAAGCTGAGGATG
CCAGCAGTGGACGGCTAGAAATAGATACCAGTGCCAGAATAAGCATAACCCTTTGCTCATCGTGTTTTC
TGATGACCAAAGCAGTGACAAGGAGAGGAAGGAGAACTGAATGAAATGATTTCCATGAGCAACTTCCA
GAGCTGGACAACCTGGGCTGGATAGCTTTTCCAGTGGACCTGGGGAAGAGGCTTTGTTGCAGATGAGAT
CAAACATCATCTATGACTCCACTGCCCGAATCAGAAGGAACGCCAAAGGAACTACTGTAAGAGGACCCC
GCTCTACATCGACTTCAAGGAGATTGGGTGGGACTCCTGGATCATCGCTCCGCTGGATACGAAGCCTAT
GAATGCCGTGGTGTGTTGTAACCTACCCCTGGCAGAGCATCTCACACCCACAAAGCATGCAATTATCCAGG
CCTTGGTCCACCTCAAGAATTCAGAAAGCTTCAAAGCCTGTGTGTGCCACAAAGCTAGAGCCCAT
CTCCATCTCTATTTAGACAAAGGCGTCGTACCTACAAGTTTAAATACGAAGGCATGGCCGTCTCCGAA
TGTGGCTGTAGA

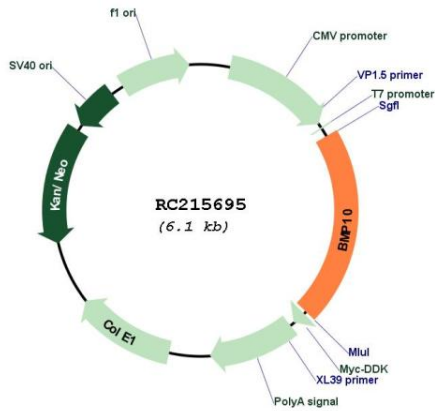
ACGCGTACGCGGCCGCTCGAGCAGAACTCATCTCAGAAGAGGATCTGGCAGCAAATGATATCCTGGATT
ACAAGGATGACGACGATAAGGTTTAA



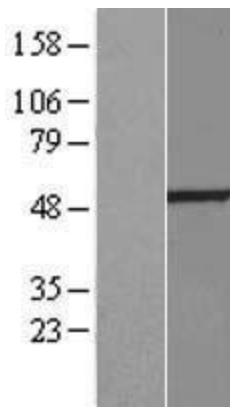
[View online »](#)

OTI Annotation:	This clone was engineered to express the complete ORF with an expression tag. Expression varies depending on the nature of the gene.
Components:	The ORF clone is ion-exchange column purified and shipped in a 2D barcoded Matrix tube containing 10ug of transfection-ready, dried plasmid DNA (reconstitute with 100 ul of water).
Reconstitution Method:	<ol style="list-style-type: none">1. Centrifuge at 5,000xg for 5min.2. Carefully open the tube and add 100ul of sterile water to dissolve the DNA.3. Close the tube and incubate for 10 minutes at room temperature.4. Briefly vortex the tube and then do a quick spin (less than 5000xg) to concentrate the liquid at the bottom.5. Store the suspended plasmid at -20°C. The DNA is stable for at least one year from date of shipping when stored at -20°C.
Note:	Plasmids are not sterile. For experiments where strict sterility is required, filtration with 0.22um filter is required.
RefSeq:	NM_014482.3
RefSeq Size:	1584 bp
RefSeq ORF:	1275 bp
Locus ID:	27302
UniProt ID:	O95393
Cytogenetics:	2p13.3
Protein Families:	Druggable Genome, Secreted Protein, Transmembrane
MW:	48.1 kDa
Gene Summary:	This gene encodes a secreted ligand of the TGF-beta (transforming growth factor-beta) superfamily of proteins. Ligands of this family bind various TGF-beta receptors leading to recruitment and activation of SMAD family transcription factors that regulate gene expression. The encoded preproprotein is proteolytically processed to generate the mature protein, which binds to the activin receptor-like kinase 1 (ALK1) and plays important roles in cardiovascular development including cardiomyocyte proliferation and regulation of heart size, closure of the ductus arteriosus, angiogenesis and ventricular trabeculation. [provided by RefSeq, Aug 2016]

Product images:



Circular map for RC215695



Western blot validation of overexpression lysate (Cat# [LY415241]) using anti-DDK antibody (Cat# [TA50011-100]). Left: Cell lysates from untransfected HEK293T cells; Right: Cell lysates from HEK293T cells transfected with RC215695 using transfection reagent MegaTran 2.0 (Cat# [TT210002]).