

Product datasheet for RC215691

Insulin Receptor (INSR) (NM_000208) Human Tagged ORF Clone

Product data:

Product Type:	Expression Plasmids
Product Name:	Insulin Receptor (INSR) (NM_000208) Human Tagged ORF Clone
Tag:	Myc-DDK
Symbol:	Insulin Receptor
Synonyms:	CD220; HHF5
Mammalian Cell Selection:	Neomycin
Vector:	pCMV6-Entry (PS100001)
E. coli Selection:	Kanamycin (25 ug/mL)
ORF Nucleotide Sequence:	>RC215691 representing NM_000208 Red=Cloning site Blue=ORF Green=Tags(s)

TTTTGTAATACGACTCACTATAGGGCGGCCGGGAATTCGTCGACTGGATCCGGTACCGAGGAGATCTGCC
GCC**CGATCGCC**

ATGGCCACCGGGGCGGGCGGGGGCGGGCGCCGCGCGCTGCTGGTGGCGGTGGCCGCGCTGCTACTGG
GCGCCGCGGGCCACCTGTACCCCGGAGAGGTGTGTCCCGCATGGATATCCGGAACAACCTCACTAGGTT
GCATGAGCTGGAGAATTGCTCTGTCATCGAAGGACACTGCAGATACTCTTGATGTTCAAAACGAGGCC
GAAGATTTCCGAGACCTCAGTTTCCCAAACCTCATCATGACTGATTACTTGTCTCTTCCGGTCT
ATGGGCTCGAGAGCCTGAAGGACCTGTTCCCAAACCTCACGGTATCCGGGGATCACGACTGTTCTTTAA
CTACGCGCTGGTATCTTCGAGATGGTTCACTCAAGGAACCTCGGCTCTACAACCTGATGAACATCACC
CGGGTCTCTGTCGCATCGAGAAGAACAATGAGCTCTGTTACTTGGCCACTATCGACTGGTCCCGTATCC
TGGATCCGTTGGAGGATAATTACATCGTGTGAACAAAGATGACAACGAGGAGTGTGGAGACATCTGTCC
GGTACCGCAAGGGCAAGACCAACTGCCCCGCCACCGTCAACGGGCAGTTTGTGCAACGATGTTGG
ACTCATAGTCACTGCCAGAAAGTTTGGCCGACCATCTGTAAGTCAACGGCTGCACCGCCGAAGGCCCT
GTTGCCACAGCGAGTGCCTGGGCAACTGTTCTCAGCCGACGACCCACCAAGTGCCTGGCTGCCGCA
CTTCTACCTGGACGCGAGTGTGTGGAGACCTGCCCAAAATGCAAGACTCGCGGAGGAGGGCTGCCACCA
GTGAATTCAGCTTCTGCCAGGACCTGCACCAAAATGCAAGACTCGCGGAGGAGGGCTGCCACCA
AGTTCATTCAACAACAAGTGATCCCTGAGTGTCCCTCGGGTACACGATGAATTCAGCAACTTGT
GTGCACCCATGCCTGGTCCCTGTCCCAAGGTGTGCCACCTCCTAGAAGGCGAGAAGACCATCGACTCG
GTGACGTCTGCCAGGAGCTCCGAGGATGCACCGTCAACGGGAGTCTGATCATCAACATTCGAGGAG
GCAACAATCTGGCAGCTGAGCTAGAAGCAACCTCGGCTCATTGAAGAAATTCAGGGTATCTAAAAAT
CCGCCGATCTACGCTCTGGTGTCACTTCTTCTTCCGAAAGTACGTCTGATTCGAGGAGAGACCTTG
GAAATTGGGAACACTCCTTCTATGCCTGGACAACCAGAACCTAAGGCAGCTCTGGGACTGGAGCAAC
ACAACCTCACCATCACTCAGGGGAAACTCTTCTCCACTATAACCCAAACTCTGCTTGCAGAAATCCA
CAAGATGGAAGAAGTTTCAGGAACCAAGGGCGCCAGGAGAGAAACGACATTGCCCTGAAGACCAATGGG



[View online »](#)

GACCAGGCATCCTGTGAAAATGAGTTACTTAAATTTTCTTACATTCGGACATCTTTTGACAAGATCTTGC
TGAGATGGGAGCCGACTGGCCCCGACTTCCGAGACCTTTGGGGTTCATGCTGTTCTACAAAGAGGC
CCCTTATCAGAATGTGACGGAGTTCGACGGCAGGATGCGTGTGGTTCCAACAGTTGGACGGTGGTAGAC
ATTGACCCACCCCTGAGGTCCAACGACCCCAAATCACAGAACCACCCAGGGTGGCTGATGCGGGGTCTCA
AGCCCTGGACCCAGTATGCCATCTTTGTGAAGACCCTGGTCACCTTTTCGGATGAACGCCGACCTATGG
GGCCAAGAGTGACATCTTATGTCCAGACAGATGCCACCAACCCTCTGTGCCCTGGATCCAATCTCA
GTGTCTAACTCATCACCAGATTATTCTGAAGTGGAAACCACCTCCGACCCCAATGGCAACATACCC
ACTACCTGGTTTTCTGGGAGAGGCAGGCCGAAGACAGTGAGCTGTTTCGAGCTGGATTATTGCCTCAAAGG
GCTGAAGCTGCCCTCGAGGACCTGGTCTCCACCATTTCGAGTCTGAAGATTCTCAGAAGCACAACCAGAGT
GAGTATGAGGATTCGGCCGGCGAATGCTGCTCCTGTCCAAGACAGACTCTCAGATCCTGAAGGAGCTGG
AGGAGTCTCGTTTAGGAAGACGTTTGGAGTACCTGCACAACGTGGTTTTCTGCCAGAAAAACCTC
TTCAGGCACTGGTCCGAGGACCCTAGGCCATCTCGAAACGCAGGTCCCTTGGCGATGTTGGGAATGTG
ACGGTGGCCGTGCCACGGTGGCAGCTTCCCCAACACTCTCTGACCAGCGTCCCACGAGTCCGGAGG
AGCACAGGCCCTTTGAGAAGTGGTGAACAAGGAGTGCCTGGTCACTCCGGCTTGCACACTTCACGGG
CTATCGCATCGAGCTGCAGGCTTGAACCAGGACACCCCTGAGGAACGGTGCAGTGTGGCAGCCTACGTC
AGTGCGAGGACCATGCCTGAAGCCAAGGCTGATGACATTGTTGGCCCTGTGACGCATGAAATCTTTGAGA
ACAACGTCGTCCTTGTATGTGGCAGGAGCCGAAGGAGCCCAATGGTCTGATCGTGTATGAAGTGAG
TTATCGCGCATATGGTATGAGGAGCTGCATCTCTGCTCTCCGCAAGCACTTCGCTCTGGAACGGGGC
TGCAGGCTGCGTGGGCTGTACCCGGGAACTACAGCGTGCGAATCCGGGGCACCTCCCTTGGGGCAACG
GCTCTTGGACGGAACCCACTATTTCTACGTGACAGACTATTTAGACGTCCTCCGTCAAATATTGCAAAAAT
TATCATCGGCCCTCATCTTTGCTTTCTCTTACGTGTTGTGATTGGAAGTATTTATCTATTCTGAGA
AAGAGGCAGCCAGATGGGCCGCTGGGACCGCTTACGCTTCTTCAAACCTGAGTATCTCAGTGCAGTG
ATGTGTTCCATGCTCTGTGACGTGCCGACGAGTGGGAGTGTCTCGAGAGAAGATCACCCCTCTTCG
AGAGCTGGGGCAGGGCTCCTTCGGCATGGTGTATGAGGGCAATGCCAGGGACATCATCAAGGGTGAGGCA
GAGACCCGCTGGCGGTGAAGACGGTCAACGAGTCAAGGAGTCTCCGAGAGCGGATTGAGTTCCTCAATG
AGGCCTCGGTATGAAGGGCTTCACTGCCATCATGTGGTGGCCTCCTGGGAGTGGTGTCCAAGGGCCA
GCCACGCTGGTGGTATGGAGCTGATGGCTCACGGAGACCTGAAGAGCTACCTCCGTTCTTGGCGCCA
GAGGCTGAGAATAATCCTGGCCGCCCTCCCCCTACCCCTCAAGAGATGATTCAGATGGCGGCAGAGATTG
CTGACGGGATGGCCTACCTGAACGCCAAGAAGTTTGTGCATCGGGACCTGGCAGCGAGAACTGCATGGT
CGCCCATGATTTACTGTCAAAATTGGAGACTTTGGAATGACCAGAGACATCTATGAAACGGATTACTAC
CGGAAAGGGGCAAGGGTCTGCTCCCTGTACGGTGGATGGCACCCGAGTCCCTGAAGGATGGGGTCTTCA
CCACTTCTCTGACATGTGGTCTTTGGCGTGGTCTTTGGGAAATCACCAAGCTTGGCAGAACAGCCTTA
CCAAGGCCTGTCTAATGAACAGGTGTTGAAATTTGTCATGGATGGAGGGTATCTGGATCAACCCGACAAC
TGTCCAGAGAGAGTCACTGACCTCATGCGCATGTGCTGGCAATTCACCCCAAGATGAGGCCAACCTTCC
TGGAGATTGTCAACCTGCTCAAGGACGACCTGCACCCAGCTTCCAGAGGTGTCGTTCTTCCACAGCGA
GGAGAACAAGGCTCCCGAGAGTGAAGGAGCTGGAGATGGAGTTTGGAGACATGGAGAATGTCCCTGGAC
CGTTCTCGCACTGTGAGAGGAGGAGGCGGGGGCCGGGATGGAGGGTCTCGCTGGGTTTCAAGCGGA
GCTACGAGGAACACATCCCTTACACACACATGAACGGAGGCAAGAAAAACGGGCGGATTCTGACCTTGC
TCGGTCCAATCCTTCC

ACGCGTACGCGGCCGCTCGAGCAGAACTCATCTCAGAAGAGGATCTGGCAGCAATGATATCCTGGATT
ACAAGGATGACGACGATAAGGTTTAA

Protein Sequence: >RC215691 representing NM_000208
 Red=Cloning site Green=Tags(s)

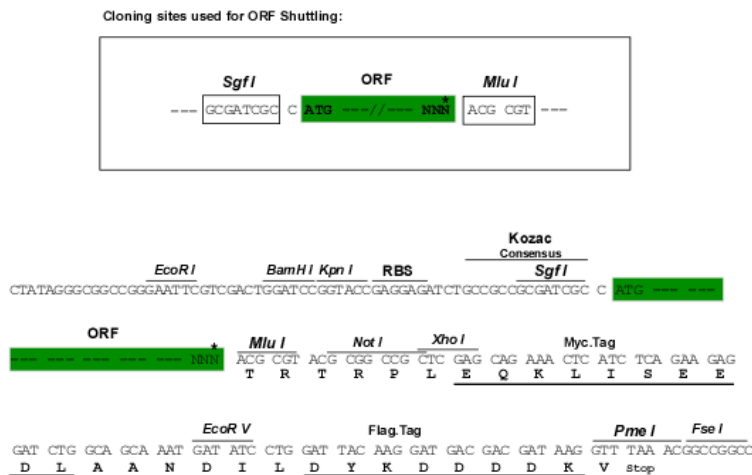
MATGRRGAAAAPLLVAVAALLLGAAGHLYPGEVCPGMDIRNNLTRLHELENCVIEGHLQILLMFKTRP
 EDFRDL SFPKLIMITDYLLLFRVYGLESKDLFPNLTVIRGSRLLFFNYALVIFEMVHLKELGLYNLMNIT
 RGSVRIEKNELCYLATIDWSRILDSVEDNYIVLNKDDNEECGDICPGTAKGKTNCPATVINGQFVERCW
 THSHCQKVCPTICKSHGCTAEGLCCHSECLGNCSQPDDPTKCVACRNFYLDGRCVETCPPPYHFQDWRC
 VNF SFCQDLHHKCKNSRRQGHQYVIHNNKCIPECPSGYTMNSSNLLCTPCLGPCPKVCHLLEGEKTIDS
 V TSAQELRGCTVINGSLIINIRGGNNLAAELEANLGLIEEISGYLKIRRSYALVLSFFRKLRLIRGETL
 EIGNYSFYALDNQNLRLQWDWSKHNLITIQGKLFHYNPKLCLSEIHKMEEVSGTKGRQERNDIALKTNG
 DQASCENELLKFSYIRTSFDKILLRWEYWPDPFRDLLGFMLFYKEAPYQNVTEFDGQDACGSNSWTVVD
 IDPPLRSNDPKSQNHGWL MRGLKPWTQYAFVKTLVTFSDERRTYGAKSDIIVVQTDATNPSVPLDPIS
 VSNSSQIILKWKPPSDPNGNITHYLVFWRQAEDSELFELDYCLKGLKLP SRTWSPPESEDSQKHNQS
 EYEDSAGECCSCKTDSQILKELEESSFRKTFEDYLHNVVVFPVKTS SGTGAEDPRPSRKRSLGDVGNV
 TVAVPTVAAFPNTSSTSPTSPEEHRPFKVVNKE SLVISGLRHF TGYRIELQACNQDTP EERCSSVAAYV
 SARTMPEAKADDIVGPVTHEIFENNVVHLMWQEPKEPNGLIVLYEVS YRRYGD EELHLCSVRKHFALERG
 CRLRGLSPGNYSVRIRATSLAGNGSWTEPTYFYVTDYLDVPSNIAKIIIGPLIFVFLFSVVIGSIYFLR
 KRQPDGGLGPLYASSNPEYLSASDVFPSCVYVPDEWEVSREKITLLRELQGSFGMVYEGNARDI IKGEA
 ETRVAVKTVNESASLRERIEFLNEASVMKGF TCHHVVRLLGVVSKGQPTLVVME LMAHGDLKSYLRLRP
 EAENNPGRPPPTLQEMIQMAAEIADGMAYLNAKKFVHRDLAARNCMVAHDFTVKIGDFGMTRDIYETDYY
 RKGKGLLPVRWMAPE SLKDG VFTTSSDMWSFGVVLWEITSLAEQPYQGLSNEQVLK FVMDGGYLDQPDN
 CPERVTDLMRMCWQFNPKMRPTFLEIVNLLKDDLHPSFPEVSFFHSEENKAP ESEELMEFEDMENVPLD
 RSSHCQREEAGGRDGGSSLGFKRSYEEHIPYTHMNGGKKNRILTLPRSNPS

TRTRPLEQKLISEEDLAANDILDYKDDDDKV

Chromatograms: https://cdn.origene.com/chromatograms/mg4737_d05.zip

Restriction Sites: SgfI-MluI

Cloning Scheme:



* The last codon before the Stop codon of the ORF

ACCN: NM_000208

ORF Size: 4146 bp

OTI Disclaimer: Due to the inherent nature of this plasmid, standard methods to replicate additional amounts of DNA in E. coli are highly likely to result in mutations and/or rearrangements. Therefore, OriGene does not guarantee the capability to replicate this plasmid DNA. Additional amounts of DNA can be purchased from OriGene with batch-specific, full-sequence verification at a reduced cost. Please contact our customer care team at custsupport@origene.com or by calling 301.340.3188 option 3 for pricing and delivery.

The molecular sequence of this clone aligns with the gene accession number as a point of reference only. However, individual transcript sequences of the same gene can differ through naturally occurring variations (e.g. polymorphisms), each with its own valid existence. This clone is substantially in agreement with the reference, but a complete review of all prevailing variants is recommended prior to use. [More info](#)

OTI Annotation: This clone was engineered to express the complete ORF with an expression tag. Expression varies depending on the nature of the gene.

Components: The ORF clone is ion-exchange column purified and shipped in a 2D barcoded Matrix tube containing 10ug of transfection-ready, dried plasmid DNA (reconstitute with 100 ul of water).

Reconstitution Method:

1. Centrifuge at 5,000xg for 5min.
2. Carefully open the tube and add 100ul of sterile water to dissolve the DNA.
3. Close the tube and incubate for 10 minutes at room temperature.
4. Briefly vortex the tube and then do a quick spin (less than 5000xg) to concentrate the liquid at the bottom.
5. Store the suspended plasmid at -20°C. The DNA is stable for at least one year from date of shipping when stored at -20°C.

RefSeq: [NM_000208.4](#)

RefSeq Size: 4691 bp

RefSeq ORF: 4149 bp

Locus ID: 3643

UniProt ID: [P06213](#)

Cytogenetics: 19p13.2

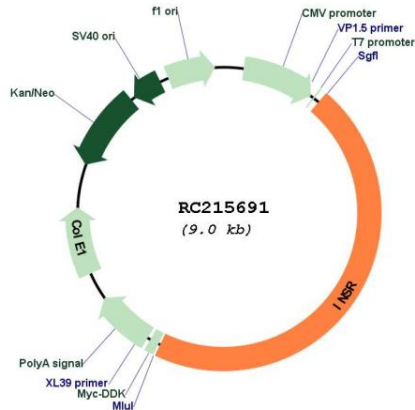
Protein Families: Druggable Genome, Protein Kinase, Transmembrane

Protein Pathways: Adherens junction, Insulin signaling pathway, Type II diabetes mellitus

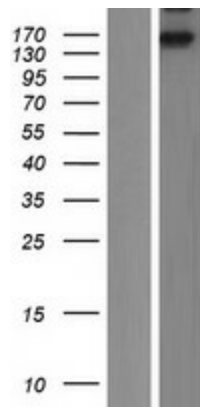
MW: 156.33 kDa

Gene Summary:

This gene encodes a member of the receptor tyrosine kinase family of proteins. The encoded preproprotein is proteolytically processed to generate alpha and beta subunits that form a heterotetrameric receptor. Binding of insulin or other ligands to this receptor activates the insulin signaling pathway, which regulates glucose uptake and release, as well as the synthesis and storage of carbohydrates, lipids and protein. Mutations in this gene underlie the inherited severe insulin resistance syndromes including type A insulin resistance syndrome, Donohue syndrome and Rabson-Mendenhall syndrome. Alternative splicing results in multiple transcript variants. [provided by RefSeq, Oct 2015]

Product images:


Circular map for RC215691



Western blot validation of overexpression lysate (Cat# [LY424860]) using anti-DDK antibody (Cat# [TA50011-100]). Left: Cell lysates from untransfected HEK293T cells; Right: Cell lysates from HEK293T cells transfected with RC215691 using transfection reagent MegaTran 2.0 (Cat# [TT210002]).