

Product datasheet for RC215688

KLF7 (NM_003709) Human Tagged ORF Clone

Product data:

Product Type:	Expression Plasmids
Product Name:	KLF7 (NM_003709) Human Tagged ORF Clone
Tag:	Myc-DDK
Symbol:	KLF7
Synonyms:	UKLF
Mammalian Cell Selection:	Neomycin
Vector:	pCMV6-Entry (PS100001)
E. coli Selection:	Kanamycin (25 ug/mL)
ORF Nucleotide Sequence:	>RC215688 representing NM_003709 Red=Cloning site Blue=ORF Green=Tags(s)

TTTTGTAATACGACTCACTATAGGGCGGCCGGAATTCGTCGACTGGATCCGGTACCGAGGAGATCTGCC
GCC**CGATCGCC**

ATGGACGTGTTGGCTAGTTATAGTATATTCAGGAGCTACAACCTGTCCACGACACCGGCTACTTCTCAG
CTTTACCATCCCTGGAGGAGACCTGGCAGCAGACATGCCTTGAATTGGAACGCTACCTACAGACGGAGCC
CCGGAGGATCTCAGAGACCTTTGGTGAGGACTTGGACTGTTTCTCCACGCTTCCCCTCCCCGTGCATT
GAGGAAAGCTTCCGTCGTTAGACCCCCTGCTGCTCCCCGTGGAAGCGGCCATCTGTGAGAAGAGCTCGG
CAGTGGACATCTTCTCTCGGACAAGTTGCTATCTGAGACCTGCCTCAGCCTCCAGCCGGCCAGCTC
TTCTCTAGACAGCTACACAGCCGTCACACAGGCCAGCTCAACGAGTGACCTCATTAAACGCCCCATCG
TCCCCTGAGCTCAGCCGCCATCTGGTCAAAACCTCACAACTCTCTGCCGTGGATGGCAGGTTGACGT
TGAAACTGGTGGCCAAGAAGGCTGCTCTCAGCTCCGTAAGGTGGGAGGGTCCGCAACAGCTGCAGCAGC
CGTGACGGCTGCGGGGCGGTTAAGAGTGGACAGAGCGACAGTGACCAAGGAGGGCTAGGGGCTGAAGCA
TGTCCCGAAAACAAGAAGAGGGTTACCCGCTGTGAGTTTAAACGGGTGCCGAAAGTTTATACAAAAGCT
CCCCTTAAAGGCCACCAGAGGACTCACACAGGTGAGAAGCCTTATAAGTGCTCATGGGAGGGATGTGA
GTGGCGTTTTGCACGAAGCGATGAGCTCACGAGGCACTACAGGAAACACAGGTGCAAAGCCCTTCAA
TGCAACCACTGCGACAGGTGTTTTCCAGGTCTGACCATCTTGCCTCCACATGAAGAGACATATC

ACGCGTACGCGGGCCGCTCGAGCAGAAACTCATCTCAGAAGAGGATCTGGCAGCAAATGATATCCTGGATT
ACAAGGATGACGACGATAAGGTTTAA



[View online »](#)

Protein Sequence: >RC215688 representing NM_003709
Red=Cloning site Green=Tags(s)

MDVLASYSIFQELQLVHDTGYFSALPSLEETWQQTCELELERYLQTEPRRISETFGEDLDCFLHASPPPCI
 EESFRRLDPLLLPVEAAICEKSSAVDILLSRDKLLSETCLSLQPASSSLDSYAVNQAQLNAVTSLTTPPS
 SPELSRHLVKTSQTL SAVDGTVTLKLVAKKAALSSVKVGVATAAAVTAAGAVKSGQSDSDQGGGAEAE
 CPENKKRVHRCQFNGCRKVYTKSSHLKAHQRTHTGKPYKCSWEGCEWRFARSDELTRHYRKHTGAKPFK
 CNHCDRCFSRSDHLALHMKRHI

TRTRPLEQKLISEEDLAANDILDYKDDDDKV

Chromatograms: https://cdn.origene.com/chromatograms/mg2919_f06.zip

Restriction Sites: SgfI-MluI

Cloning Scheme:



ACCN: NM_003709

ORF Size: 906 bp

OTI Disclaimer: The molecular sequence of this clone aligns with the gene accession number as a point of reference only. However, individual transcript sequences of the same gene can differ through naturally occurring variations (e.g. polymorphisms), each with its own valid existence. This clone is substantially in agreement with the reference, but a complete review of all prevailing variants is recommended prior to use. [More info](#)

OTI Annotation: This clone was engineered to express the complete ORF with an expression tag. Expression varies depending on the nature of the gene.

Components: The ORF clone is ion-exchange column purified and shipped in a 2D barcoded Matrix tube containing 10ug of transfection-ready, dried plasmid DNA (reconstitute with 100 ul of water).

Reconstitution Method:

1. Centrifuge at 5,000xg for 5min.
2. Carefully open the tube and add 100ul of sterile water to dissolve the DNA.
3. Close the tube and incubate for 10 minutes at room temperature.
4. Briefly vortex the tube and then do a quick spin (less than 5000xg) to concentrate the liquid at the bottom.
5. Store the suspended plasmid at -20°C. The DNA is stable for at least one year from date of shipping when stored at -20°C.

RefSeq: [NM_003709.3](#)

RefSeq Size: 1640 bp

RefSeq ORF: 909 bp

Locus ID: 8609

UniProt ID: [O75840](#)

Cytogenetics: 2q33.3

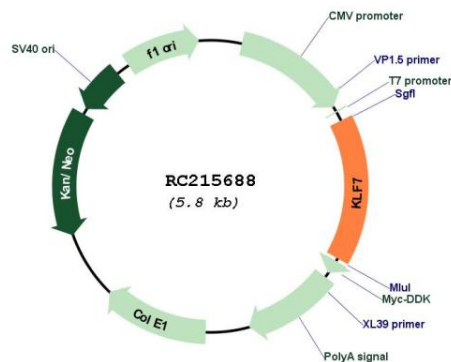
Domains: zf-C2H2

Protein Families: Transcription Factors

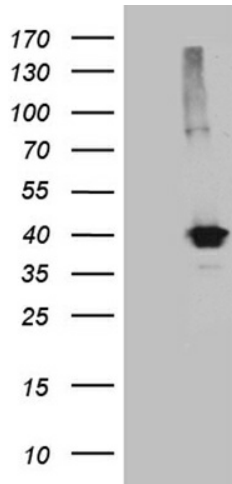
MW: 33.2 kDa

Gene Summary: The protein encoded by this gene is a member of the Kruppel-like transcriptional regulator family. Members in this family regulate cell proliferation, differentiation and survival and contain three C2H2 zinc fingers at the C-terminus that mediate binding to GC-rich sites. This protein may contribute to the progression of type 2 diabetes by inhibiting insulin expression and secretion in pancreatic beta-cells and by deregulating adipocytokine secretion in adipocytes. A pseudogene of this gene is located on the long arm of chromosome 3. Alternative splicing results in multiple transcript variants. [provided by RefSeq, Aug 2012]

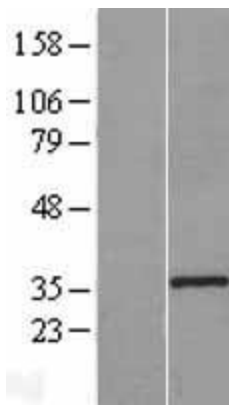
Product images:



Circular map for RC215688



HEK293T cells were transfected with the pCMV6-ENTRY control (Cat# [PS100001], Left lane) or pCMV6-ENTRY KLF7 (Cat# RC215688, Right lane) cDNA for 48 hrs and lysed. Equivalent amounts of cell lysates (5 ug per lane) were separated by SDS-PAGE and immunoblotted with anti-KLF7(Cat# [TA812008]). Positive lysates [LY418489] (100ug) and [LC418489] (20ug) can be purchased separately from OriGene.



Western blot validation of overexpression lysate (Cat# [LY418489]) using anti-DDK antibody (Cat# [TA50011-100]). Left: Cell lysates from untransfected HEK293T cells; Right: Cell lysates from HEK293T cells transfected with RC215688 using transfection reagent MegaTran 2.0 (Cat# [TT210002]).