

## Product datasheet for **RC215679**

### **DZIP1 (NM\_014934) Human Tagged ORF Clone**

#### **Product data:**

Product Type:	Expression Plasmids
Product Name:	DZIP1 (NM_014934) Human Tagged ORF Clone
Tag:	Myc-DDK
Symbol:	DZIP1
Synonyms:	DZIP; DZIPt1
Mammalian Cell Selection:	Neomycin
Vector:	pCMV6-Entry (PS100001)
E. coli Selection:	Kanamycin (25 ug/mL)



[View online »](#)

**ORF Nucleotide Sequence:**

>RC215679 representing NM\_014934  
 Red=Cloning site Blue=ORF Green=Tags(s)

TTTTGTAATACGACTCACTATAGGGCGGCCGGGAATTCGTCGACTGGATCCGGTACCGAGGAGATCTGCC  
 GCC**CGGATCGCC**

ATGCAAGCTGAGGCAGCGGATTGGTTTTCAAGCATGCCCTTCCAGAAGCATGTCTACTACCCGCTCGCCA  
 GCGGCCAGAGGGGCCGACGTCGCTGTGGCCGCCCGCGGGTGGCGCTCCATGGCTGTGCGCC  
 CCCAGCGCGGCTTCGGGGCCCTGCCCTTCTCCAGTTCAGGCCGCGGCTGGAGAGTGTGGACTGGCGG  
 CGGCTGAGCGCCATCGACGTGGACAAGGTGGCGGGGCTGTGGACGTGCTGACGCTGCAGGAGAACATCA  
 TGAACATCACCTTCTGCAAGCTGGAAGACGAGAAGTGCCCACTGCCAGTGGGGGTGGACCCGGTGT  
 GCTGAAGCTCATCCGCTGGCGCAGTTCACCATCGAGTACTTGTGCACTCACAAGAGTTCCTCACCTCG  
 CAGCTGCACACCTGGAGGAGCGGCTGCGCTGAGCCACTGCGACGGCGAGCAGAGCAAGAAGCTGTCA  
 CCAAGCAGCGGGGAGATCAAGACGCTCAAGGAAGTGCAAACGCCGAAGAAGATGATCTCCACCCA  
 GCAGCTGATGATCGAGGCCAAAGCCAATTATTACAGTGCATTTTTGTGACAAGCCTTTATGAACCAA  
 GCTTTTCTACAAAGTCAATTCAACGCCCCACTGAAGAAAATTTCTATTTTGTAGTATCAGAAAATG  
 CACAGATTGAGAAGCTCCGGAGTGAGATCGTCGATTGAAGGAAGAGCTGCAGCTCACCAGTCTGAGCT  
 AGAGGCTGCACACCATGCCAGTGCAGTCAGATTCTCCAAGGAATATGAAATGCAGAAAACAAAAGAGGAA  
 GACTTTTTGAAGTATTTGACAGGTGAAAAGAAGAAGAAAGGAGAACTAGTTGATGAAATGAAAAAG  
 TCAAGGAGATGTTTATGAAGGAATTTAAGAATTAAGTTCGAAGAATTCAGCATTAGAATATCAACTGTC  
 AGAAATCCAGAAGTCCAATATGCAGATCAAGTCCAACATAGGCACATTAAGATGCACACGAGTTTAA  
 GAAGACCGTTCTCCATATCCCAGGATTTCCATAATGTCATGCAGTCTTGATAGTCAGGAAAGCAAT  
 GGACAGCTCGAGTTCAGCTATTCATCAAGAACAAGAAGAGAAAGGTCGGCTCCTGTACATATAGA  
 GAAACTTCGAACCTCAATGATAGATGATCTAAATGCAAGCAATGTTTTCTATAAGAAAAGGATAGAAGAG  
 CTAGGGCAGAGACTCCAGGAGCAGAATGAGCTGATTATAACTCAGAGACAGCAGATTAAGACTTTACCT  
 GTAATCCATTAACAGTATCAGTGAACCCAAAGGAAATCCTTTAGCCTGGCAGGCTTTTGAATCTCAGCC  
 AGCTGCTCCAGCTGTGCCTATGAATGCCCCAGCCCTGCACACTTTGGAACTAAATCAAGTCTGCCAATG  
 GTGCATGAACAGGCATTCTCGTCGCACATACTGGAACCAATAGAAGAACTTTAGAGGAAGAAAAAGGAA  
 GGGAAAATGAACAGAAATTAATAACAACAAAATGCATTTAAGGAAAGCTTTGAAGAGTAACTCCTCCCT  
 CACTAAGGGACTAAGAACAATGGTGGAGCAGAAGTTCAGGAGAACTGGAAACCTTGGGGATTAATGCA  
 GATATACGTGGCATTTCAGTGCATAGAGTACTAAAAAGTGTGGAATCAGAAAGACATAAGC  
 AAGAAAGAGAAATACCTAACTTTTCATCAAATTCGAGAATTCCTTGAACATCAAGTCAAGTGTAAATTTGA  
 GGAGAAAGCACTACTCTTTCAGATCAGTGCAGTGTTCCTCAAATGGATACCCCTTCAACTGGAGAAGTA  
 CCCAAAATGATACAACCTCCTTCCAAAAACAGACAAGTATTAGACAAAAAGCTGTTTCTACTGATAGGA  
 CATCTGTTCCAAAAATTAAGAAAAATGTCATGGAAGATCCTTTTCCAGAAAGTCTTCAACTATTACGAC  
 CCCTCCTTTTAGTTAGAGGAGGAGCAGGAGGACGACGACCTCATCCGGGCATACGCATCCCAGGCCCA  
 CTTCTGTGCCGCCACCACAAAACAAGGGCAGCTTCGGGAAGAACAACAGTGAAGTGCAGCGGACGGGA  
 CCGAGGGAAGCGAAATCGAGGACACTGATGATTCTCCAAGCCCGCAGGAGTCGCCGTTAAACACCTAC  
 TGAAAAAGTTGAAAAGATGTTTCCACATCGAAAAATGTGAACAAACAGTCCGGTGAACATAATGTCCCT  
 GAGATGTTTATCAAAAAAGAAGAAATACAAGAATAAAGTGTGCGGATGTGGAGGATGAAGACTGGGACA  
 TATCATCCCTAGAGGAAGAGATATCTTTGGAAAAAATCTGGGAAGAACAAGAAGAACTCCACCTGC  
 GAAAAATGAACCACATTTTGTGCTGCTAAATGCCTGGGGCGCATTTAATCCTAAGGGGCCAAAGGGA  
 GAAGGACTTCAAGAAAATGAATCAAGCACATTAAGAACAGCTTAGTAACTGTGACTGATTGGAGCGACA  
 CTTTCAGATGTC

**ACGCGT**ACGCGGCCGCTCGAGCAGAACTCATCTCAGAAGAGGATCTGGCAGCAATGATATCCTGGATT  
 ACAAGGATGACGACGATAAGGTTTAA

**Protein Sequence:** >RC215679 representing NM\_014934  
 Red=Cloning site Green=Tags(s)

MQAEAADWFSSMPFQKHVYYPPLASGPEGPDVAVAAAAAGAASMACAPPSAASGPLPFFQFRPRLESVDWR  
 RLSAIDVDKVAGAVDVLTLQENIMNITFCKLEDEKCPHCQSGVDPVLLKLIQLAQFTIEYLLHSQEFLLTS  
 QLHTLEERLRLSHCDGEQSKLLTKQAGEIKTLKEECKRRKKMISTQQLMIEAKANYQCHFCDKAFMNQ  
 AFLQSHIQRRHTEENSHFEYQKNAQIEKLRSEIIVLKEELQLTRSELEAAHHASAVRFSKEYEMQKTEE  
 DFLKLFDRWKEEKEKLVDMEKVKEMFMKEFKELTSKNSALEYQLSEIQKSNMQIKSNIIGTLKDAHEFK  
 EDRSPYPQDFHNVMQLLDSQESKWTARVQAIHQEHKKEKGRLLSHIEKLRTSMIDDLNASNVFYKKRIEE  
 LGQRLQEQLIITQRQQIKDFTCNPLNSISEPKGNPLAWQAFESQPAAPAVPMNAPALHTLETKSSLPM  
 VHEQAFSSHILEPIEELSEEEKGRENEQKLNKKMHLRKALKSNSSLTKGLRTMVEQNLMEKLETGINA  
 DIRGISSDQLHRVLKSVESERHKQEREIPNFHQIREFLEHQVSKIEEKALLSSDQCSVSQMDTLSTGEV  
 PKMIQLPSKNRQLIRQKAVSTDRTSVPKIKKNVMDPFPKSSITTPPFSEEEQEDDDLIRAYASPGP  
 LPVPPPQNKGSFGKNTVKSDADGTEGSEIEDTDDSPKAGVAVKTPTEKVEKMFPHRKNNKPVGGTNPV  
 EMFIKKEELQELKCADVEDEDWDISSLEEEISLGKSGKEQKPPPAKNEPHFAHVLNAWGAFNPKGPKG  
 EGLQENESSTLKSSLVTVTDWSDTSDV

TRTRPLEQKLISEEDLAANDILDYKDDDDKV

**Chromatograms:** [https://cdn.origene.com/chromatograms/mg4242\\_e08.zip](https://cdn.origene.com/chromatograms/mg4242_e08.zip)

**Restriction Sites:** SgfI-MluI

**Cloning Scheme:**

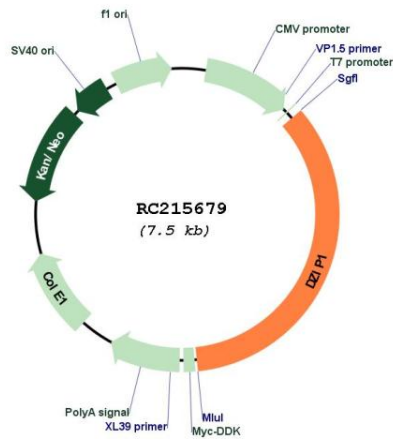
Cloning sites used for ORF Shuttling:



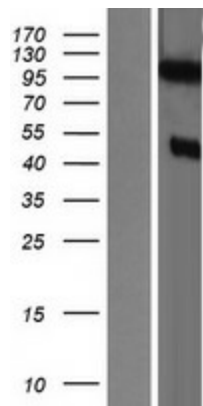
\* The last codon before the Stop codon of the ORF

<b>ACCN:</b>	NM_014934
<b>ORF Size:</b>	2601 bp
<b>OTI Disclaimer:</b>	The molecular sequence of this clone aligns with the gene accession number as a point of reference only. However, individual transcript sequences of the same gene can differ through naturally occurring variations (e.g. polymorphisms), each with its own valid existence. This clone is substantially in agreement with the reference, but a complete review of all prevailing variants is recommended prior to use. <a href="#">More info</a>
<b>OTI Annotation:</b>	This clone was engineered to express the complete ORF with an expression tag. Expression varies depending on the nature of the gene.
<b>Components:</b>	The ORF clone is ion-exchange column purified and shipped in a 2D barcoded Matrix tube containing 10ug of transfection-ready, dried plasmid DNA (reconstitute with 100 ul of water).
<b>Reconstitution Method:</b>	<ol style="list-style-type: none"><li>1. Centrifuge at 5,000xg for 5min.</li><li>2. Carefully open the tube and add 100ul of sterile water to dissolve the DNA.</li><li>3. Close the tube and incubate for 10 minutes at room temperature.</li><li>4. Briefly vortex the tube and then do a quick spin (less than 5000xg) to concentrate the liquid at the bottom.</li><li>5. Store the suspended plasmid at -20°C. The DNA is stable for at least one year from date of shipping when stored at -20°C.</li></ol>
<b>RefSeq Size:</b>	7438 bp
<b>RefSeq ORF:</b>	2547 bp
<b>Locus ID:</b>	22873
<b>UniProt ID:</b>	<a href="#">Q86YF9</a>
<b>Cytogenetics:</b>	13q32.1
<b>Domains:</b>	zf-C2H2
<b>MW:</b>	98.66 kDa
<b>Gene Summary:</b>	May participate in spermatogenesis via its interaction with DAZ (PubMed:15081113). Has a role in primary cilium formation (PubMed:19852954).[UniProtKB/Swiss-Prot Function]

Product images:



Circular map for RC215679



Western blot validation of overexpression lysate (Cat# [LY402394]) using anti-DDK antibody (Cat# [TA50011-100]). Left: Cell lysates from untransfected HEK293T cells; Right: Cell lysates from HEK293T cells transfected with RC215679 using transfection reagent MegaTran 2.0 (Cat# [TT210002]).