

Product datasheet for RC215669

Reticulon 1 (RTN1) (NM_206852) Human Tagged ORF Clone

Product data:

Product Type: Expression Plasmids
Product Name: Reticulon 1 (RTN1) (NM_206852) Human Tagged ORF Clone
Tag: Myc-DDK
Symbol: Reticulon 1
Synonyms: NSP
Mammalian Cell Selection: Neomycin
Vector: pCMV6-Entry (PS100001)
E. coli Selection: Kanamycin (25 ug/mL)
ORF Nucleotide Sequence: >RC215669 representing NM_206852
 Red=Cloning site Blue=ORF Green=Tags(s)

TTTTGTAATACGACTCACTATAGGGCGGCCGGAATTCGTCGACTGGATCCGGTACCGAGGAGATCTGCC
 GCC**CGATCGCC**

ATGCAGGCCACTGCCGATTCACCAAGATGGACTGTGTGTGGAGCAACTGGAAAAGTCAGGCTATTGACC
 TGTTGTATTGGCGGGACATCAAGCAGACGGGCATCGTGTGGGAGTTTCCTGCTGCTCTTCTCCCT
 GACCCAGTTCAGCGTGGTGAAGCGTGGCCTACCTGGCCCTGGCCGACTCTCAGCCACCATCAGTTTC
 CGCATCTACAAGTCTGTTTTACAAGCAGTGCAGAAAACCGACGAAGGCCACCCTTCAAGGCCTACTTGG
 AGCTTGAGATCACCTTTCTCAGGAGCAGATTCAGAAGTACACGGACTGCCTGCAGTTCTACGTGAACAG
 CACACTTAAGGAACTGAGGAGGCTCTTCCCTGTCCAGGACTGGTGGATTCTTAAAATTTGCAGTCCTG
 ATGTGGCTCCTGACCTACGTTGGCGCTCTTCAATGGCCTGACCTGCTGCTCATGGCTGTGGTTTCAA
 TGTTTACTCTACCTGTAGTGTATGTTAAGCACCAGGCACAGATTGACCAATATCTGGGACTTGTGAGGAC
 TCACATAAATGCTGTTGTGGCAAAGATTCAGGCTAAAATCCCAGGCGCTAAGAGGCACGCTGAG

ACGCGTACGCGGGCCGCTCGAGCAGAACTCATCTCAGAAGAGGATCTGGCAGCAAATGATATCCTGGATT
 ACAAGGATGACGACGATAAGGTTTAA

Protein Sequence: >RC215669 representing NM_206852
 Red=Cloning site Green=Tags(s)

MQATADSTKMDCVWSNWKSQAIDLLYWRDIKQTGIVFGSFLLLLFSLTQFSVVSVVAYLALAALSATISF
 RIYKSVLQAVQKTDEGHPFKAYLELEITLSQEQIQKYTDCLQFYVNSTLKELRRLFLVQDLVDSLKFAVL
 MWLLTYVGALFNGLTLLLMAVVSMFTLPVVVYKHQAQIDQYLLGLVRTHINAVVAKIQAKIPGAKRHA

TRTRPLEQKLISEEDLAANDILDYKDDDDKV

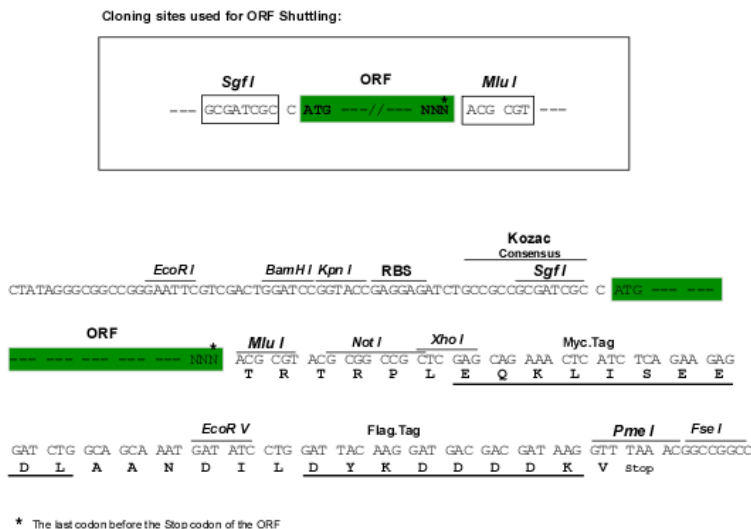


[View online »](#)

Chromatograms: https://cdn.origene.com/chromatograms/mk8028_e02.zip

Restriction Sites: SgfI-MluI

Cloning Scheme:



ACCN: NM_206852

ORF Size: 624 bp

OTI Disclaimer: Due to the inherent nature of this plasmid, standard methods to replicate additional amounts of DNA in E. coli are highly likely to result in mutations and/or rearrangements. Therefore, OriGene does not guarantee the capability to replicate this plasmid DNA. Additional amounts of DNA can be purchased from OriGene with batch-specific, full-sequence verification at a reduced cost. Please contact our customer care team at custsupport@origene.com or by calling 301.340.3188 option 3 for pricing and delivery.

The molecular sequence of this clone aligns with the gene accession number as a point of reference only. However, individual transcript sequences of the same gene can differ through naturally occurring variations (e.g. polymorphisms), each with its own valid existence. This clone is substantially in agreement with the reference, but a complete review of all prevailing variants is recommended prior to use. [More info](#)

OTI Annotation: This clone was engineered to express the complete ORF with an expression tag. Expression varies depending on the nature of the gene.

Components: The ORF clone is ion-exchange column purified and shipped in a 2D barcoded Matrix tube containing 10ug of transfection-ready, dried plasmid DNA (reconstitute with 100 ul of water).

Reconstitution Method:

1. Centrifuge at 5,000xg for 5min.
2. Carefully open the tube and add 100ul of sterile water to dissolve the DNA.
3. Close the tube and incubate for 10 minutes at room temperature.
4. Briefly vortex the tube and then do a quick spin (less than 5000xg) to concentrate the liquid at the bottom.
5. Store the suspended plasmid at -20°C. The DNA is stable for at least one year from date of shipping when stored at -20°C.

RefSeq: [NM_206852.2](#)

RefSeq Size: 1710 bp

RefSeq ORF: 627 bp

Locus ID: 6252

UniProt ID: [Q16799](#)

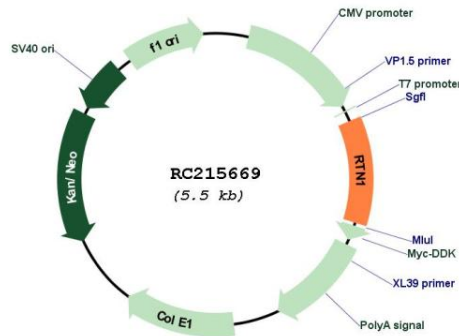
Cytogenetics: 14q23.1

Protein Families: Transmembrane

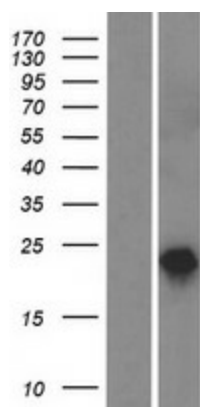
MW: 23.4 kDa

Gene Summary: This gene belongs to the family of reticulon encoding genes. Reticulons are associated with the endoplasmic reticulum, and are involved in neuroendocrine secretion or in membrane trafficking in neuroendocrine cells. This gene is considered to be a specific marker for neurological diseases and cancer, and is a potential molecular target for therapy. Alternative splicing results in multiple transcript variants. [provided by RefSeq, Jul 2011]

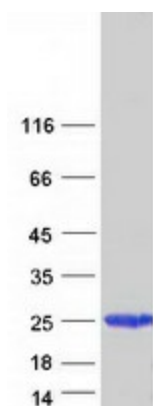
Product images:



Circular map for RC215669



Western blot validation of overexpression lysate (Cat# [LY404239]) using anti-DDK antibody (Cat# [TA50011-100]). Left: Cell lysates from untransfected HEK293T cells; Right: Cell lysates from HEK293T cells transfected with RC215669 using transfection reagent MegaTran 2.0 (Cat# [TT210002]).



Coomassie blue staining of purified RTN1 protein (Cat# [TP315669]). The protein was produced from HEK293T cells transfected with RTN1 cDNA clone (Cat# RC215669) using MegaTran 2.0 (Cat# [TT210002]).