

Product datasheet for **RC215667**

EBAG9 (NM_198120) Human Tagged ORF Clone

Product data:

Product Type:	Expression Plasmids
Product Name:	EBAG9 (NM_198120) Human Tagged ORF Clone
Tag:	Myc-DDK
Symbol:	EBAG9
Synonyms:	EB9; PDAF
Mammalian Cell Selection:	Neomycin
Vector:	pCMV6-Entry (PS100001)
E. coli Selection:	Kanamycin (25 ug/mL)
ORF Nucleotide Sequence:	>RC215667 ORF sequence Red=Cloning site Blue=ORF Green=Tags(s)

TTTTGTAATACGACTCACTATAGGGCGCCGGGAATTCGTCGACTGGATCCGGTACCGAGGAGATCTGCC
GCC**CGATCGCC**

ATGGCCATCACCCAGTTTCGGTTATTTAAATTTGTACCTGCCTAGCAACAGTATTCTCATTCTAAAGA
GATTAATATGCAGATCTGGCAGAGGACGGAAATTAAGTGGAGACCAAATAACTTTGCCAACTACAGTTGA
TTATTCATCAGTTCCTAAGCAGACAGATGTTGAAGAGTGGACTTCCTGGGATGAAGATGCACCCACCAGT
GTAAGATCGAAGGAGGGAATGGGAATGTGGCAACACAACAAAATCTTTGGAACAACCTGGAACCTGACT
ATTTTAAGGACATGACACCAACTATTAGGAAAACCTCAGAAAATTGTTATTAAGAAGAGAGAACCATTGAA
TTTTGGCATCCCAGATGGGAGCAGAGTTTCTCTAGTAGATTAGCAGCTACACAAGATCTGCCTTTTATT
CATCAGTCTTCTGAATTAGGTGACTTAGATACCTGGCAGGAAAATACCAATGCATGGGAAGAAGAAGAAG
ATGCAGCCTGGCAAGCAGAAGAAGTTCTGAGACAGCAGAAAACCTAGCAGACAGAGAAAAGAGAGCAGCCGA
ACAACAAGGAAGAAAATGGAAAAGGAAGCACAACGGCTAATGAAGAAGGAACAAAACAAAATTTGGTGTG
AAACTTTCA

ACGCGTACGCGGCGCTCGAGCAGAAAACCTCATCTCAGAAGAGGATCTGGCAGCAAATGATATCTGGATT
ACAAGGATGACGACGATAAGGTTTAA



[View online »](#)

Protein Sequence: >RC215667 protein sequence
 Red=Cloning site Green=Tags(s)

MAITQFRLFKFCTCLATVFSFLKRLICRSGRGRKLSGDQITLPTTVDYSSVPKQTDVEEWTSWDEDAPTS
 VKIEGGNGNVATQQNSLEQLPDPYFKDMPTPIRKTKQKIVIKKREPLNFGIPDGSTGFSSRLAATQDLPFI
 HQSSELGDLDTWQENTNAWEEEDAAWQAEVLRQOKLADREKRAAEQQRKKMEKAQRLMKKEQNKIGV
 KLS

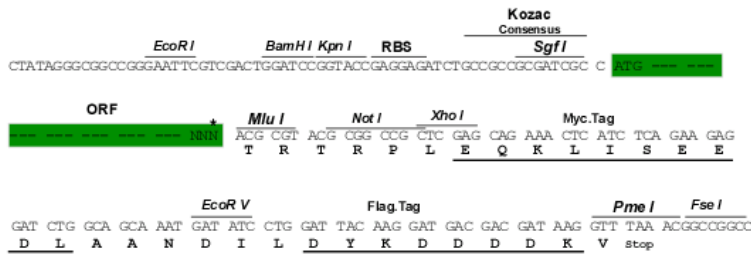
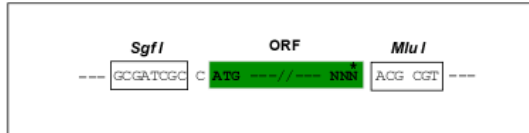
TRTRPLEQKLISEEDLAANDILDYKDDDDKV

Chromatograms: https://cdn.origene.com/chromatograms/mk6341_d02.zip

Restriction Sites: SgfI-MluI

Cloning Scheme:

Cloning sites used for ORF Shuttling:



* The last codon before the Stop codon of the ORF

ACCN: NM_198120

ORF Size: 639 bp

OTI Disclaimer: The molecular sequence of this clone aligns with the gene accession number as a point of reference only. However, individual transcript sequences of the same gene can differ through naturally occurring variations (e.g. polymorphisms), each with its own valid existence. This clone is substantially in agreement with the reference, but a complete review of all prevailing variants is recommended prior to use. [More info](#)

OTI Annotation: This clone was engineered to express the complete ORF with an expression tag. Expression varies depending on the nature of the gene.

Components: The ORF clone is ion-exchange column purified and shipped in a 2D barcoded Matrix tube containing 10ug of transfection-ready, dried plasmid DNA (reconstitute with 100 ul of water).

Reconstitution Method:

1. Centrifuge at 5,000xg for 5min.
2. Carefully open the tube and add 100ul of sterile water to dissolve the DNA.
3. Close the tube and incubate for 10 minutes at room temperature.
4. Briefly vortex the tube and then do a quick spin (less than 5000xg) to concentrate the liquid at the bottom.
5. Store the suspended plasmid at -20°C. The DNA is stable for at least one year from date of shipping when stored at -20°C.

RefSeq: [NM_198120.2](#), [NP_936056.1](#)

RefSeq Size: 2328 bp

RefSeq ORF: 642 bp

Locus ID: 9166

UniProt ID: [O00559](#)

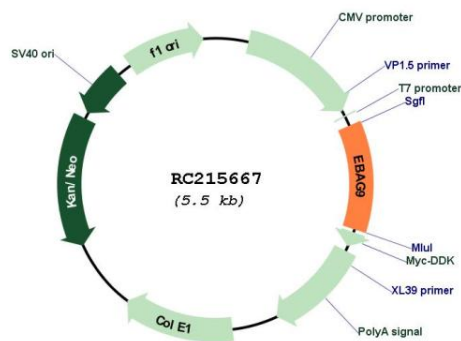
Cytogenetics: 8q23.2

Protein Families: Druggable Genome

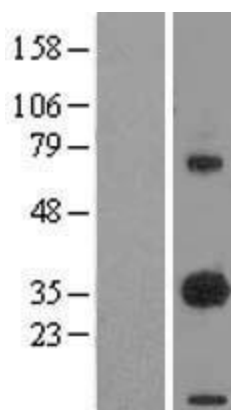
MW: 24.4 kDa

Gene Summary: This gene was identified as an estrogen-responsive gene. Regulation of transcription by estrogen is mediated by estrogen receptor, which binds to the estrogen-responsive element found in the 5'-flanking region of this gene. The encoded protein is a tumor-associated antigen that is expressed at high frequency in a variety of cancers. Alternate splicing results in multiple transcript variants. A pseudogene of this gene has been defined on chromosome 10. [provided by RefSeq, Jul 2013]

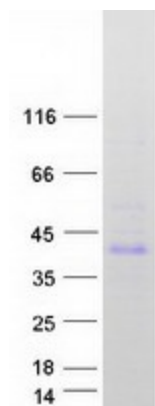
Product images:



Circular map for RC215667



Western blot validation of overexpression lysate (Cat# [LY405069]) using anti-DDK antibody (Cat# [TA50011-100]). Left: Cell lysates from untransfected HEK293T cells; Right: Cell lysates from HEK293T cells transfected with RC215667 using transfection reagent MegaTran 2.0 (Cat# [TT210002]).



Coomassie blue staining of purified EBAG9 protein (Cat# [TP315667]). The protein was produced from HEK293T cells transfected with EBAG9 cDNA clone (Cat# RC215667) using MegaTran 2.0 (Cat# [TT210002]).