

## Product datasheet for **RC215665**

### **GPR161 (NM\_153832) Human Tagged ORF Clone**

#### **Product data:**

Product Type:	Expression Plasmids
Product Name:	GPR161 (NM_153832) Human Tagged ORF Clone
Tag:	Myc-DDK
Symbol:	GPR161
Synonyms:	RE2
Mammalian Cell Selection:	Neomycin
Vector:	pCMV6-Entry (PS100001)
E. coli Selection:	Kanamycin (25 ug/mL)



[View online »](#)

**ORF Nucleotide Sequence:**

>RC215665 representing NM\_153832  
 Red=Cloning site Blue=ORF Green=Tags(s)

TTTTGTAATACGACTCACTATAGGGCGGCCGGGAATTCGTCGACTGGATCCGGTACCGAGGAGATCTGCC  
 GCC**CGGATCGCC**

ATGAGCCTCAACTCCTCCTCAGCTGCAGGAAGGAGCTGAGTAATCTCACTGAGGAGGAGGTGGCGAAG  
 GGGCGTCATCATCACCCAGTTCATCGCCATCATTGTCATCACCATTTTTGTCTGCCTGGGAAACCTGGT  
 CATCGTGGTCACCTTGTACAAGAAGTCCTACCTCCTCACCTCAGCAACAAGTTCGTCTTTCAGCCTGACT  
 CTGTCCAACCTTCTGCTGTCCGTGTTGGTGTGCCTTTTGTGGTACGAGCTCCATCCGACAGGAAATGGA  
 TCTTTGGTGTAGTGTGGTGAACCTCTCTGCCCTCCTCTACCTGCTGATCAGCTCTGCCAGCATGCTAAC  
 CCTCGGGGTATTGCCATCGACCGCTACTATGCTGTCTGTACCCATGGTGTACCCCATGAAGATCACA  
 GGAACCCGGGCTGTGATGGCACTGTCTACATCTGGCTTCACTCGCTCATCGGCTGCCTGCCACCCCTGT  
 TTGGTTGGTTCATCCGTGGAGTTTACGAGTTCAAATGGATGTGTGGCTGCTTGGCACCAGGAGCCTGG  
 CTACACGGCCTTCTGGCAGATCTGGTGTGCCCTTCCCTTTCTGGTCACTGGTGTGCTATGGCTTC  
 ATCTTCCGCGTGGCCAGGGTCAAGGCACCAAGGTGCACTGTGGCACAGTCGTCATCGTGGAGGAGGATG  
 CTCAGAGGACCGGGAGGAAGAATCCAGCACCTCCACCTCCTTTCAGGCAGCAGGAGGAATGCCTTTCA  
 GGGTGTGGTCTACTCGGCCAACCAGTGCAAAGCCCTCATCACCATCCTGGTGGTCTCGGTGCCTTCATG  
 GTCACCTGGGGCCCTACATGGTTGTATCGCCTCTGAGGCCCTCTGGGGAAAAGCTCCGTCTCCCCGA  
 GCCTGGAGACTTGGGCCACATGGCTGTCTTTGCCAGCGCTGTCTGCCACCCCTGATCTATGGACTCTG  
 GAACAAGACAGTTCGCAAGAAGTACTGGGCATGTGCTTTGGGGACCGGTATTATCGGGAACCATTTGTG  
 CAACGACAGAGGACTTCCAGGCTTTCAGCATTTCCAACAGGATCACAGACCTGGGCCTGCCCCACACC  
 TCACTCGCCTCATGGCAGGTGGACAGCCCTGGGGCACAGCAGCAGCAGCGGGGACACTGGCTTCAGCTG  
 CTCCCAGGACTCAGGGACAGATATGATGCTGCTTGGAGACTACAGTCTGATGACAACCCTCCCTCTCAC  
 TGCACTTGCCACCCAAGAGAAGGAGCTCGGTGACATTTGAGGATGAAGTGAACAATAAAGAAGCTG  
 CCAAGAAGCTCGATTCTTCATGTGAAAGCTGAAGTACACAAGTCTTGGACAGTTACGCAGCAAGCTTGGC  
 CAAAGCCATTGAGGCCGAAGCCAAAATCAACTATTTGGGGAGGAGGCTTGGCAGGGGTCTTGGTTACA  
 GCACGGACTGTCCGGGGGGCGGCTTGGGGGCCCGGAGGCAGCAGAAGCTTGTGAGCCAGAGGCTGC  
 AGTTGCAGAGCATCGAAGAAGGAGATGTTTTAGCTGCCGAGCAGAGA

**ACGCGT**ACGCGGCCGCTCGAGCAGAAACTCATCTCAGAAGAGGATCTGGCAGCAAATGATATCCTGGATT  
 ACAAGGATGACGACGATAAGGTTTAA

**Protein Sequence:**

>RC215665 representing NM\_153832  
 Red=Cloning site Green=Tags(s)

MSLNSSLSCRKELSNLTEEEGGEGGVIIITQFIAIIVITIFVCLGNLVIVVTLYKSYLLTSLNKFVFSLT  
 LSNFLLSVLVPFVVTSSIRREWFVGVVWCNFSALLYLLISSASMLTLGVIAIDRYAVLYPMVYPMKIT  
 GNRVAVMALVYIWLHSLIGCLPPLFGWSSVEFDEFKWMCVAAWHREPGYTAFWQIWCALFPFLVMLVYGF  
 IFRVARVKARKVHCGTVVIVEEDAQRTGRKNSSTSTSSSGSRNAFQGVVYSANQCKALITILVVLGAFM  
 VTWGPYMVVIASEALWGKSSVSPSLETWATWLSFASAVCHPLIYGLWNKTVRKELLMGCFGDRYYREPFV  
 QRQRTSRLFSISNRITDLGLSPHLTALMAGGQPLGHSSSTGDTGFSCSQDSGDMMLLEDYTSDDNPPSH  
 CTCPKRRSSVTFEVEVEQIKEAAKNSILHVKAHVHKSLSLSYAASLAKAIEAEAKINLFGEEALPGVLVT  
 ARTVPGGGFGRRGSRTLVSQRLQLQSIIEGDVLAEEQR

**TRTRPLEQKLI**SEEDLAANDILDYKDDDDKV

**Chromatograms:**

[https://cdn.origene.com/chromatograms/mk8120\\_e11.zip](https://cdn.origene.com/chromatograms/mk8120_e11.zip)

**Restriction Sites:**

Sgfl-MluI

**Cloning Scheme:**


**ACCN:** NM\_153832

**ORF Size:** 1587 bp

**OTI Disclaimer:** The molecular sequence of this clone aligns with the gene accession number as a point of reference only. However, individual transcript sequences of the same gene can differ through naturally occurring variations (e.g. polymorphisms), each with its own valid existence. This clone is substantially in agreement with the reference, but a complete review of all prevailing variants is recommended prior to use. [More info](#)

**OTI Annotation:** This clone was engineered to express the complete ORF with an expression tag. Expression varies depending on the nature of the gene.

**Components:** The ORF clone is ion-exchange column purified and shipped in a 2D barcoded Matrix tube containing 10ug of transfection-ready, dried plasmid DNA (reconstitute with 100 ul of water).

**Reconstitution Method:**

1. Centrifuge at 5,000xg for 5min.
2. Carefully open the tube and add 100ul of sterile water to dissolve the DNA.
3. Close the tube and incubate for 10 minutes at room temperature.
4. Briefly vortex the tube and then do a quick spin (less than 5000xg) to concentrate the liquid at the bottom.
5. Store the suspended plasmid at -20°C. The DNA is stable for at least one year from date of shipping when stored at -20°C.

**RefSeq:** [NM\\_153832.3](#)

**RefSeq Size:** 8222 bp

**RefSeq ORF:** 1590 bp

**Locus ID:** 23432

**UniProt ID:** [Q8N6U8](#)

**Cytogenetics:** 1q24.2

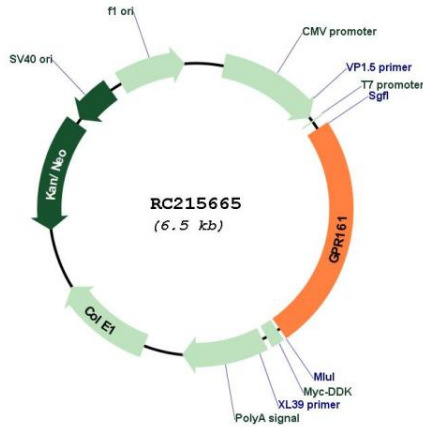
**Domains:** 7tm\_1

**Protein Families:** Druggable Genome, GPCR, Transmembrane

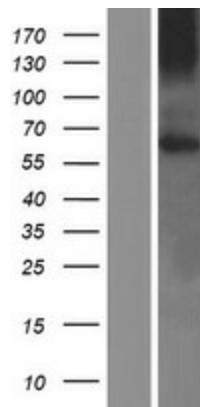
**MW:** 59 kDa

**Gene Summary:** The protein encoded by this gene is an orphan G protein-coupled receptor whose ligand is unknown. This gene is overexpressed in triple-negative breast cancer, and disruption of this gene slows the proliferation of basal breast cancer cells. Therefore, this gene is a potential drug target for triple-negative breast cancer. [provided by RefSeq, Mar 2017]

**Product images:**



Circular map for RC215665



Western blot validation of overexpression lysate (Cat# [LY403522]) using anti-DDK antibody (Cat# [TA50011-100]). Left: Cell lysates from untransfected HEK293T cells; Right: Cell lysates from HEK293T cells transfected with RC215665 using transfection reagent MegaTran 2.0 (Cat# [TT210002]).