

## Product datasheet for **RC215660**

### OSBPL2 (NM\_014835) Human Tagged ORF Clone

#### Product data:

Product Type:	Expression Plasmids
Product Name:	OSBPL2 (NM_014835) Human Tagged ORF Clone
Tag:	Myc-DDK
Symbol:	OSBPL2
Synonyms:	DFNA67; DNFA67; ORP-2; ORP2
Mammalian Cell Selection:	Neomycin
Vector:	pCMV6-Entry (PS100001)
E. coli Selection:	Kanamycin (25 ug/mL)



[View online »](#)

**ORF Nucleotide Sequence:**

>RC215660 representing NM\_014835  
 Red=Cloning site Blue=ORF Green=Tags(s)

TTTTGTAATACGACTCACTATAGGGCGGCCGGAATTCGTCGACTGGATCCGGTACCGAGGAGATCTGCC  
 GCC**CGCATCGCC**

ATGAACGGAGAGGAAGAATTCTTTGATGCCGTCACAGAGGCAAATCAGAAAGTCACGGGAATGATTGACT  
 TAGACACCAGCAAAAATAATAGGATTGGGAAAACCTGGGGAGAGGCCCTCTCAAGAGAACGGAATTCAGAA  
 ACACAGGACATCGCTGCCGGCTCCCATGTTTCAGCAGAAGCGACTTCAGCGTGTGGACCATCTGAAGAAG  
 TGTGTTGGCCTGGAGCTGTCCAAGATCACGATGCCAATCGCCTTCAACGAGCCTCTGAGCTTCTGCAGC  
 GGATCACGGAGTACATGGAGCACGTGTACCTATCCACAGGGCCTCTGCCAGCCCCAGCCCCTGGAGAG  
 GATGCAGTCTGTGGCTGCTTTTGTCTGTTTCGGCTGTGGCTTCCCAGTGGGAGAGGACCGGCAAACCATTT  
 AATCCACTCTGGGAGAAACGTATGAATTAATCAGGGAAGATTTAGGATTCAGATTTATATCGGAACAGG  
 TCAGTACCACCCCCCATCAGTGCCTTCCACTCGGAAGGTCTCAACCATGACTTCTGTCCATGGCTC  
 CATCTACCCCAAGCTAAAGTTCTGGGGAAAAGCGTGGAGCGGAGCCCCGAGGCACCATCACCCCTGGAG  
 CTGCTCAAACATAATGAAGCCTACACCTGGACCAACCCACCTGCTGCGTCCACAACGTATCATCGGGA  
 AGCTGTGGATAGAGCAGTATGGGACAGTGGAGATTTAAACCACAGAAGTGGACATAAGTGTGTGCTTCA  
 CTTTAAACCGTGTGGATTATTTGGAAAAGAACTTCACAAGGTGGAAGGACACATTCAGCAAAAAACAAA  
 AAGAAGCTCTTTATGATCTATGGCAAAATGGACGGAATGTTTGTGGGGCATAGATCCTGTTTCGTATGAAT  
 CCTTCAAGAAGCAGGAGAGGAGAGGTGACCACCTGAGAAAAGGCCAAGCTGGATGAAGACTCCGGGAAGGC  
 TGACAGCGACGTGGCTGACGACGTGCCTGTGGCCAGGAGACCGTGCAGGTCATTCTGGCAGCAAGCTG  
 CTCTGGAGGATCAACACCCGGCCCCCAACTCTGCCAGATGTATAATTTACCAGTTTCACTGTGAGCC  
 TCAACGAGCTGGAGACAGGCATGGAGAAGACCCCTGCCACCCAGGACTGCCGCCTGCGCCCTGAGATCCG  
 CGGCATGGAGAATGGCAACATGGATCTGGCCAGCCAGGAGAAGGAGCGGCTGGAGGAGAAGCAGAGAGAA  
 GCACGGAGGGAGCGGGCCAAGGAGGAGGAGAGTGGCAGACGAGGTGGTTCTACCCAGGCAATAACCCCT  
 ACACTGGGACCCCGACTGGTTGTATGCAGGGATTACTTTGAGCGGAATTTCTCCGACTGCCAGATAT  
 CTAC

**ACGCGT**ACGCGGCCGCTCGAGCAGAAACTCATCTCAGAAGAGGATCTGGCAGCAATGATATCCTGGATT  
 ACAAGGATGACGACGATAAGGTTTAA

**Protein Sequence:**

>RC215660 representing NM\_014835  
 Red=Cloning site Green=Tags(s)

MNGEEFFDAVTEANQKVTGMIDLDTSKNNRIGKTGERPSQENGIQKHRTSLPAPMFSRSDFSVWTILKK  
 CVGLELSKITMPIAFNEPLSFLQRITEYMEHVYL IHRASCQPQPLERMQSVAFAVSAVASQWERTGKPF  
 NPLLGETYELIREDLGFRFISEQVSHPPISAFHSEGLNHDFLFHGSYIPKLFKFWGKSVEAEPRGTITLE  
 LLKHNEAYTWNPTCCVHNVIIGKLWIEQYGTVEILNHRTGHKCVLHFKPCGLFGKELHKVEGHIQDKNK  
 KKLFMYIGKWTECLWGIDPVSYESFKKQERRGDHLRKAKLDEDSGKADSDVADDVPVAQETVQVIPGSKL  
 LWRINTRPPNSAQMYNFTSFTVSLNELETGMEKTL PPTDCRLRPDIRGMENGMNDLASQEKERLEEKQRE  
 ARRERAKEEAEWQTRWFYPGNNPYTGTPDWLYAGDYFERNFSDCPDIY

**TR**TRPLEQKLISEEDLAANDILDYKDDDDKV

**Chromatograms:**

[https://cdn.origene.com/chromatograms/mg2881\\_g09.zip](https://cdn.origene.com/chromatograms/mg2881_g09.zip)

**Restriction Sites:**

Sgfl-MluI

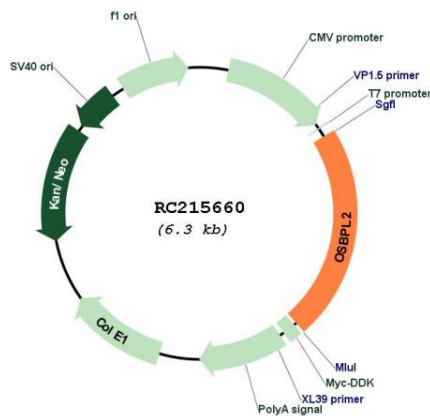


**Domains:** Oxysterol\_BP

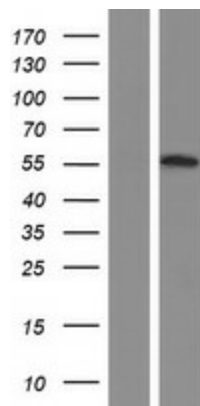
**MW:** 53.8 kDa

**Gene Summary:** This gene encodes a member of the oxysterol-binding protein (OSBP) family, a group of intracellular lipid receptors. Most members contain an N-terminal pleckstrin homology domain and a highly conserved C-terminal OSBP-like sterol-binding domain, although the encoded protein contains only the sterol-binding domain. In vitro studies have shown that the encoded protein can bind strongly to phosphatic acid and weakly to phosphatidylinositol 3-phosphate, but cannot bind to 25-hydroxycholesterol. The protein associates with the Golgi apparatus. Transcript variants encoding different isoforms have been described. [provided by RefSeq, Sep 2014]

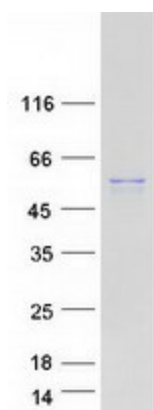
**Product images:**



Circular map for RC215660



Western blot validation of overexpression lysate (Cat# [LY414990]) using anti-DDK antibody (Cat# [TA50011-100]). Left: Cell lysates from untransfected HEK293T cells; Right: Cell lysates from HEK293T cells transfected with RC215660 using transfection reagent MegaTran 2.0 (Cat# [TT210002]).



Coomassie blue staining of purified OSBPL2 protein (Cat# [TP315660]). The protein was produced from HEK293T cells transfected with OSBPL2 cDNA clone (Cat# RC215660) using MegaTran 2.0 (Cat# [TT210002]).