

Product datasheet for **RC215659**

TAF3 (NM_001004440) Human Tagged ORF Clone

Product data:

Product Type:	Expression Plasmids
Product Name:	TAF3 (NM_001004440) Human Tagged ORF Clone
Tag:	Myc-DDK
Symbol:	TAF3
Synonyms:	FAM19A3; TAF3
Mammalian Cell Selection:	Neomycin
Vector:	pCMV6-Entry (PS100001)
E. coli Selection:	Kanamycin (25 ug/mL)
ORF Nucleotide Sequence:	>RC215659 ORF sequence Red=Cloning site Blue=ORF Green=Tags(s)

TTTTGTAATACGACTCACTATAGGGCGCCGGGAATTCGTCGACTGGATCCGGTACCGAGGAGATCTGCC
GCC**CGATCGCC**

ATGAGTGAGAGGGTCTGAGCGGAAGTGGAGCACGGGCGGCTGGCTGCTGGCACTGTGCCTGGCCTGGCTGT
GGACCCACCTGACCTGGCTGCCTTGCAGCCTCCCACTGCCACAGTGCTTGTGCAGCAGGGCACCTGCGA
GGTGATTGCGGCTCACCCTGCTGCAACCGGAACCGCATCGAGGAGCGCTCCAGACGGTAAATGCTCC
TGTTTTCTGCCAGGTGGCCGGCACACGCGGGCAAAGCCCTCTCGCTGGACGACCTGCTCTGGCTG
CCCACTGTGCTCGTAGAGACCCTAGAGCTGCACCTCCGCTCCTGCTCCACAGCCTCCATCGTCTGAG
AGATGGTGGTGTGATGAGCCCTGCCTGCCGGGGAGGAGTGTAAAGTGTCCCGGACCTGTCGGGAT
GGAGCTGCAGCAGTGGACACAAAGTCAAAACCAAGGTCACACGATAGCTCTTGGGGTACGGCCTG
GACAAGAAAGGCTTGAC

ACGCGTACGCGGCCGCTCGAGCAGAACTCATCTCAGAAGAGGATCTGGCAGCAAATGATATCCTGGATT
ACAAGGATGACGACGATAAGGTTTAA

Protein Sequence:	>RC215659 protein sequence Red=Cloning site Green=Tags(s)
-------------------	--

MSERVERNWTGGWLLALCLAWLWTHLTLAALQPPTATVLVQQGTCEVIAAHRCCNRNRIEERSQTVKCS
CFSGQVAGTTRAKPSCVDDLLAAHCARRDPRAALRLLLPQPPSSCRDGGVWRWSPACRGRSVRCSRTC
GAAAVDTKSKPPRSHDSSWGRPGQERLD

TRTRPLEQKLISEEDLAANDILDYKDDDDKV

Chromatograms:	https://cdn.origene.com/chromatograms/mk6464_b01.zip
----------------	---



[View online »](#)

Restriction Sites: SgfI-MluI

Cloning Scheme:



ACCN: NM_001004440

ORF Size: 507 bp

OTI Disclaimer: The molecular sequence of this clone aligns with the gene accession number as a point of reference only. However, individual transcript sequences of the same gene can differ through naturally occurring variations (e.g. polymorphisms), each with its own valid existence. This clone is substantially in agreement with the reference, but a complete review of all prevailing variants is recommended prior to use. [More info](#)

OTI Annotation: This clone was engineered to express the complete ORF with an expression tag. Expression varies depending on the nature of the gene.

Components: The ORF clone is ion-exchange column purified and shipped in a 2D barcoded Matrix tube containing 10ug of transfection-ready, dried plasmid DNA (reconstitute with 100 ul of water).

Reconstitution Method:

1. Centrifuge at 5,000xg for 5min.
2. Carefully open the tube and add 100ul of sterile water to dissolve the DNA.
3. Close the tube and incubate for 10 minutes at room temperature.
4. Briefly vortex the tube and then do a quick spin (less than 5000xg) to concentrate the liquid at the bottom.
5. Store the suspended plasmid at -20°C. The DNA is stable for at least one year from date of shipping when stored at -20°C.

RefSeq: [NM_001004440.1](#), [NP_001004440.1](#)

RefSeq Size: 1144 bp

RefSeq ORF: 510 bp

Locus ID: 284467

UniProt ID: [Q7Z5A8](#)

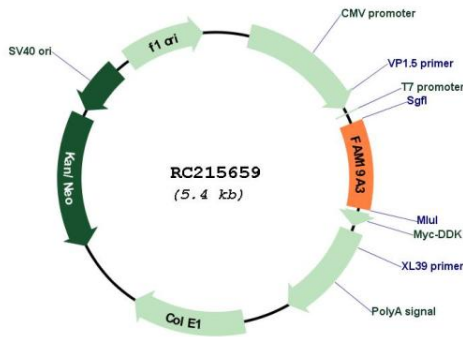
Cytogenetics: 1p13.2

Protein Families: Secreted Protein, Transmembrane

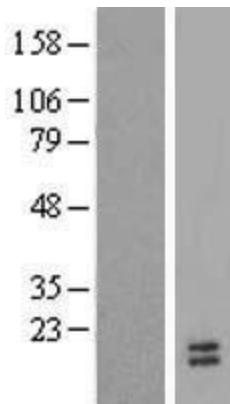
MW: 18.5 kDa

Gene Summary: This gene is a member of the TAF A family which is composed of five highly homologous genes that encode small secreted proteins. These proteins contain conserved cysteine residues at fixed positions, and are distantly related to MIP-1alpha, a member of the CC-chemokine family. The TAF A proteins are predominantly expressed in specific regions of the brain, and are postulated to function as brain-specific chemokines or neurokinins, that act as regulators of immune and nervous cells. Alternatively spliced transcript variants encoding multiple isoforms have been observed for this gene. [provided by RefSeq, Nov 2011]

Product images:



Circular map for RC215659



Western blot validation of overexpression lysate (Cat# [LY423753]) using anti-DDK antibody (Cat# [TA50011-100]). Left: Cell lysates from untransfected HEK293T cells; Right: Cell lysates from HEK293T cells transfected with RC215659 using transfection reagent MegaTran 2.0 (Cat# [TT210002]).