

Product datasheet for RC215657

ETFB (NM_001014763) Human Tagged ORF Clone

Product data:

Product Type: Expression Plasmids
Product Name: ETFB (NM_001014763) Human Tagged ORF Clone
Tag: Myc-DDK
Symbol: ETFB
Synonyms: FP585; MADD
Mammalian Cell Selection: Neomycin
Vector: pCMV6-Entry (PS100001)
E. coli Selection: Kanamycin (25 ug/mL)
ORF Nucleotide Sequence: >RC215657 representing NM_001014763
Red=Cloning site Blue=ORF Green=Tags(s)

TTTTGTAATACGACTCACTATAGGGCGGCCGGAATTCGTCGACTGGATCCGGTACCGAGGAGATCTGCC
GCC**CGATCGCC**

ATGTACCTCTCACTGTGGGTTACCATAAACTGTAAATTTGAGAAACACTCTTTCAGGCCTGAGAGGAG
CAGTGACAACAGTAGGGATGATCAAGTCAGATGTCCTGGTACCCAGGAATGGCTGGATGAGAGAAGGAG
ACAGGGTGACCTGCCCTGCCTACAACTCTAACCCAGTTCTGTCCTGGAGCTGTGTGACCCCGGACAA
GGCCCTGCCCTTTCCAGGCTGTCGTTGCCTCATCCAGCCTGGGAGAGGTTGGCGCTGAGGCCCCAC
CTTCTTGCTGTTTCTCCTGACCCACCCCTTCCCTCCTGCTGGGCAGATCCGAGTGAAGCCTGACAG
GACCGGTGTGGTACGGATGGTGTGAAGCACTCCATGAACCCCTTCTGTGAGATCGCGGTGGAGGAGGCT
GTGCGGCTCAAGGAGAAGAAGCTGGTGAAGGAGGTCATCGCCGTCAGCTGTGGGCCTGCACAGTGCCAGG
AGACGATTTCGTACCGCCCTGGCCATGGGTGCAGACCGAGGTATCCACGTGGAGGTGCCCCAGCAGAAGC
AGAACGCTTGGTCCCCTGCAGGTGGCTCGGGTCTGGCCAAGCTGGCAGAGAAGGAGAAGGTGGACCTG
GTGCTGCTGGGCAACAGGCCATCGATGATGACTGTAACCAGACAGGGCAGATGACAGCTGGATTCTTG
ACTGGCCACAGGGCACATTCGCCTCCAGGTGACGCTGGAGGGGACAAGTTGAAAGTGGAGCGGGAGAT
CGATGGGGGCTGGAGACCCTGCGCCTGAAGCTGCCAGCTGTGGTGACAGCTGACCTGAGGCTCAACGAG
CCCCGTACGCCACGCTGCCAACATCATGAAAGCCAAGAAGAAGATCGAGGTGATCAAGCCTGGGG
ACCTGGGTGTGGACCTGACCTCCAAGCTCTGTGATCAGTGTGGAGGACCCGCCAGCCGACGGCCGG
CGTCAAGGTGGAGACCACTGAGGACCTGGTGGCCAAGCTGAAGGAGATTGGGCGGATT

ACGCGTACGCGGCCGCTCGAGCAGAACTCATCTCAGAAGAGGATCTGGCAGCAATGATATCCTGGATT
ACAAGGATGACGACGATAAGGTTTAA



[View online »](#)

Protein Sequence: >RC215657 representing NM_001014763
Red=Cloning site Green=Tags(s)

MYLSLWVTINTVNLNRTL SGLRGAVTTVGMIKSDVPGTQEWLDERRRQGDPLPTNSNPVLSLELCDPGQ
 GPAPFQAVVLIQPGRGLALRPPPSCLFPPDPTSPPPAGQIRVKPDRGTGVVTDGVKHSMPFCEIAVEEA
 VRLKEKLVKEVIAVSCGPAQCQETIRTALAMGADRGIHVEVPPAEAERLGPLQVARVLAKLAEKEKVDL
 VLLGKQAIDDDCNQTGQMTAGFLDWPQGT FASQVTLEGDKLKVEREIDGGLET LRLKLPVAVVTADLRLNE
 PRYATLPNIMKAKKKKIEVIKPGDLGVDLTSKLSVIVSVEPPQRTAGVKVETTEDLVAKLKEIGRI

TRTRPLEQKLISEEDLAANDILDYKDDDDKV

Chromatograms: https://cdn.origene.com/chromatograms/mk8053_f09.zip

Restriction Sites: SgfI-MluI

Cloning Scheme:



ACCN: NM_001014763

ORF Size: 1038 bp

OTI Disclaimer: The molecular sequence of this clone aligns with the gene accession number as a point of reference only. However, individual transcript sequences of the same gene can differ through naturally occurring variations (e.g. polymorphisms), each with its own valid existence. This clone is substantially in agreement with the reference, but a complete review of all prevailing variants is recommended prior to use. [More info](#)

OTI Annotation: This clone was engineered to express the complete ORF with an expression tag. Expression varies depending on the nature of the gene.

Components: The ORF clone is ion-exchange column purified and shipped in a 2D barcoded Matrix tube containing 10ug of transfection-ready, dried plasmid DNA (reconstitute with 100 ul of water).

Reconstitution Method:

1. Centrifuge at 5,000xg for 5min.
2. Carefully open the tube and add 100ul of sterile water to dissolve the DNA.
3. Close the tube and incubate for 10 minutes at room temperature.
4. Briefly vortex the tube and then do a quick spin (less than 5000xg) to concentrate the liquid at the bottom.
5. Store the suspended plasmid at -20°C. The DNA is stable for at least one year from date of shipping when stored at -20°C.

Note: Plasmids are not sterile. For experiments where strict sterility is required, filtration with 0.22um filter is required.

RefSeq: [NM_001014763.1](#), [NP_001014763.1](#)

RefSeq Size: 1318 bp

RefSeq ORF: 1041 bp

Locus ID: 2109

UniProt ID: [P38117](#)

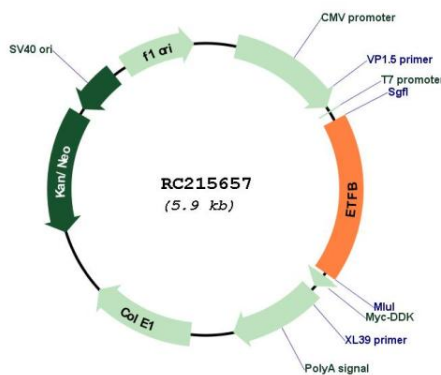
Cytogenetics: 19q13.41

Protein Families: Druggable Genome

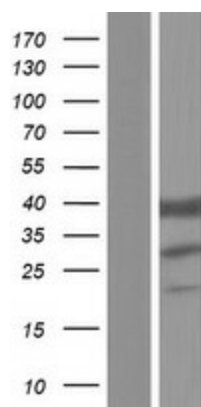
MW: 37.3 kDa

Gene Summary: This gene encodes electron-transfer-flavoprotein, beta polypeptide, which shuttles electrons between primary flavoprotein dehydrogenases involved in mitochondrial fatty acid and amino acid catabolism and the membrane-bound electron transfer flavoprotein ubiquinone oxidoreductase. The gene deficiencies have been implicated in type II glutaricaciduria. Alternatively spliced transcript variants have been found for this gene. [provided by RefSeq, Jul 2008]

Product images:



Circular map for RC215657



Western blot validation of overexpression lysate (Cat# [LY423075]) using anti-DDK antibody (Cat# [TA50011-100]). Left: Cell lysates from untransfected HEK293T cells; Right: Cell lysates from HEK293T cells transfected with RC215657 using transfection reagent MegaTran 2.0 (Cat# [TT210002]).