

Product datasheet for RC215656

MAGEB1 (NM_002363) Human Tagged ORF Clone

Product data:

Product Type:	Expression Plasmids
Product Name:	MAGEB1 (NM_002363) Human Tagged ORF Clone
Tag:	Myc-DDK
Symbol:	MAGEB1
Synonyms:	CT3.1; DAM10; MAGE-Xp; MAGEL1
Mammalian Cell Selection:	Neomycin
Vector:	pCMV6-Entry (PS100001)
E. coli Selection:	Kanamycin (25 ug/mL)
ORF Nucleotide Sequence:	>RC215656 representing NM_002363 Red=Cloning site Blue=ORF Green=Tags(s)

TTTTGTAATACGACTCACTATAGGGCGGCCGGAATTCGTCGACTGGATCCGGTACCGAGGAGATCTGCC
GCCCGCATCGCC

ATGCCTCGGGTCAGAAGAGTAAGCTCCGTGCTCGTGAGAAACGCCGAAGGCGCGAGAGGAGACCCAGG
GTCTCAAGGTTGCTCACGCCACTGCAGCAGAGAAAGAGGAGTGCCCTCCTCTCTCTGTTTTAGGGGA
TACTCCACAAGCTCCCCTGCTGCTGGCATTCCCAGAAGCCTCAGGGAGCTCCACCCACCACCTGCT
GCTGCAGCTGTGTCATGTACCGAATCTGACGAAGGTGCCAAATGCCAAGGTGAGGAAAATGCAAGTTTCT
CCCAGGCCACAACATCCACTGAGAGCTCAGTCAAAGATCCTGTAGCCTGGGAGGCAGGAATGCTGATGCA
CTTCATTCTACGTAAGTATAAATGAGAGAGCCCATATGAAGGCAGATATGCTGAAGGTTGTTGATGAA
AAGTACAAGGATCACTTCACTGAGATCCTCAATGGAGCCTCTCGCCGCTTGGAGCTCGTCTTTGGCCTTG
ATTTGAAGGAAGACAACCTAGTGGCCACACCTACACCCTCGTCAGTAAGCTAAACCTCACCAATGATGG
AAACCTGAGCAATGATTGGGACTTTCCAGGAATGGGCTTCTGATGCCTCTCCTGGGTGTGATCTTCTTA
AAGGGCAACTCTGCCACCGAGGAAGAGATCTGGAATTCATGAATGTGTTGGGAGCCTATGATGGAGAGG
AGCACTTAATCTATGGGGAACCCCGTAAGTTCATACCCAAGATCTGGTGCAAGGAAAAATATCTGAAGTA
CGAGCAGGTGCCAACAGTGATCCCCACGCTATCAATTCCTATGGGTCCGAGAGCCTATGCTGAAACC
ACCAAGATGAAAGTCCTCGAGTTTTGGCCAAGATGAATGGTGCCACTCCCGTGACTTCCCATCCCAT
ATGAAGAGGCTTTGAGAGATGAGGAAGAGAGAGCCCAAGTCCGATCCAGTGTTAGAGCCAGGCGTCGCAC
TACTGCCACGACTTTTAGAGCGGTTCTAGAGCCCCATTACAGAGGTCTCCACCCCATG

ACGCGTACGCGGCCGCTCGAGCAGAACTCATCTCAGAAGAGGATCTGGCAGCAAATGATATCCTGGATT
ACAAGGATGACGACGATAAGGTTTAA


[View online »](#)

Protein Sequence: >RC215656 representing NM_002363
 Red=Cloning site Green=Tags(s)

MPRGQSKLRAREKRRKAREETQGLKVAHATAAEKEECPSSSPVLGDTPTSSPAAGIPQKPQGAPPTTTA
 AAASCTESDEGAKCQGEENASFQATTSTESSVKDPVAWEAGMLMHFILRKYKMREPIMKADMLKVVDE
 KYKDHFTIELNGASRRLELVFGLDLKEDNPSGHTYTLVSKLNLNDGNLSNDWDFPRNGLLMPLLVIFL
 KGNSATEEEIWKFMNVLGAYDGEEHLIYGEPRKFITQDLVQEKYLKYEQVPNSDPPRYQFLWGPAYAE
 TKMKVLEFLAKMNGATPRDFPSHYEEALRDEEERAQVRSSVRARRRTTATTFRRSRAPFSRSSHPM

TRTRPLEQKLISEEDLAANDILDYKDDDDKV

Chromatograms: https://cdn.origene.com/chromatograms/mk6310_h12.zip

Restriction Sites: SgfI-MluI

Cloning Scheme:



ACCN: NM_002363

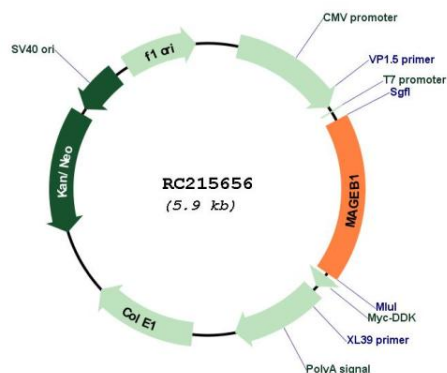
ORF Size: 1041 bp

OTI Disclaimer: Due to the inherent nature of this plasmid, standard methods to replicate additional amounts of DNA in E. coli are highly likely to result in mutations and/or rearrangements. Therefore, OriGene does not guarantee the capability to replicate this plasmid DNA. Additional amounts of DNA can be purchased from OriGene with batch-specific, full-sequence verification at a reduced cost. Please contact our customer care team at custsupport@origene.com or by calling 301.340.3188 option 3 for pricing and delivery.

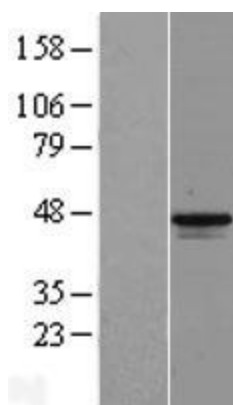
The molecular sequence of this clone aligns with the gene accession number as a point of reference only. However, individual transcript sequences of the same gene can differ through naturally occurring variations (e.g. polymorphisms), each with its own valid existence. This clone is substantially in agreement with the reference, but a complete review of all prevailing variants is recommended prior to use. [More info](#)

OTI Annotation:	This clone was engineered to express the complete ORF with an expression tag. Expression varies depending on the nature of the gene.
Components:	The ORF clone is ion-exchange column purified and shipped in a 2D barcoded Matrix tube containing 10ug of transfection-ready, dried plasmid DNA (reconstitute with 100 ul of water).
Reconstitution Method:	<ol style="list-style-type: none"> 1. Centrifuge at 5,000xg for 5min. 2. Carefully open the tube and add 100ul of sterile water to dissolve the DNA. 3. Close the tube and incubate for 10 minutes at room temperature. 4. Briefly vortex the tube and then do a quick spin (less than 5000xg) to concentrate the liquid at the bottom. 5. Store the suspended plasmid at -20°C. The DNA is stable for at least one year from date of shipping when stored at -20°C.
Note:	Plasmids are not sterile. For experiments where strict sterility is required, filtration with 0.22um filter is required.
RefSeq:	<u>NM_002363.5</u>
RefSeq Size:	1865 bp
RefSeq ORF:	1044 bp
Locus ID:	4112
UniProt ID:	<u>P43366</u>
Cytogenetics:	Xp21.2
MW:	38.9 kDa
Gene Summary:	<p>This gene is a member of the MAGEB gene family. The members of this family have their entire coding sequences located in the last exon, and the encoded proteins show 50 to 68% sequence identity to each other. The promoters and first exons of the MAGEB genes show considerable variability, suggesting that the existence of this gene family enables the same function to be expressed under different transcriptional controls. This gene is localized in the DSS (dosage-sensitive sex reversal) critical region, and expressed in testis and in a significant fraction of tumors of various histological types. This gene and other MAGEB members are clustered on chromosome Xp22-p21. Multiple alternatively spliced transcript variants encoding the same protein have been found for this gene, however, the full length nature of some variants has not been defined. [provided by RefSeq, Jul 2008]</p>

Product images:



Circular map for RC215656



Western blot validation of overexpression lysate (Cat# [LY406154]) using anti-DDK antibody (Cat# [TA50011-100]). Left: Cell lysates from untransfected HEK293T cells; Right: Cell lysates from HEK293T cells transfected with [RC224906] using transfection reagent MegaTran 2.0 (Cat# [TT210002]).