

Product datasheet for **RC215646**

BAT3 (BAG6) (NM_080703) Human Tagged ORF Clone

Product data:

Product Type:	Expression Plasmids
Product Name:	BAT3 (BAG6) (NM_080703) Human Tagged ORF Clone
Tag:	Myc-DDK
Symbol:	BAT3
Synonyms:	BAG-6; BAT3; D6S52E; G3
Mammalian Cell Selection:	Neomycin
Vector:	pCMV6-Entry (PS100001)
E. coli Selection:	Kanamycin (25 ug/mL)
ORF Nucleotide Sequence:	>RC215646 representing NM_080703 Red=Cloning site Blue=ORF Green=Tags(s)

TTTTGTAATACGACTCACTATAGGGCGGCCGGAATTCGTCGACTGGATCCGGTACCGAGGAGATCTGCC
GCC**CGATCGCC**

ATGGAGCCTAATGATAGTACCAGTACCGCTGTGGAGGAGCCTGACAGCTTGGAGGTGTTGGTGAAGACCT
TGGACTCTCAAACCTCGTACCTTTATTGTGGGGGCCAGATGAATGTAAAAGAGTTAAGGAGCACATTGC
TGCTCTGTGTCAGCATCCCATCTGAAAAACAACGGCTCATTTACCAGGGACGAGTTCTGCAAGATGATAAG
AAGCTTCAGGAATACAATGTTGGGGAAAGTTATCCACCTGGTGAACGGGCTCCTCCTCAGACTCACC
TCCCTTCTGGGGCATCTTCTGGGACGGGTCTGCCTCAGCCACTCATGGTGGGGATCCCCCCTGGTAC
TCGGGGGCTGGGCCTCTGTTTCATGACCGGAATGCCAACAGCTATGTCATGGTTGGAACCTTCAATCTT
CCTAGTGACGGCTCTGCTGTGGATGTTACATCAACATGGAACAGGCCCGGATTAGAGTGAGCCCCGGG
TACGGCTGGTGATGGCTCAGCACATGATCAGGGATATACAGACCTTACTATCCCGGATGGAGTGTGAGG
AGGGCCCCAACCGCAGCACAGTCAGCCGCCCGCAGCCACCGGCTGTGACCCCGGAGCCAGTAGCCTTG
AGCTCTCAAACATCAGAACCAGTTGAAAGTGAAGCACCTCCCCGGGAGCCATGGAGGCAGAAGAAGTGG
AGGAGCGTGGCCAGCCAGAACCCGGAGCTCACTCCTGGCCAGCCCCAGCGGGCCCAACCTGCCCC
GGAAACAATGCACCAACCATCCTTCCCTGCGGAGTATGTCGAGGTGCTCCAGGAGCTACAGCGGCTG
GAGAGTCGCTCCAGCCCTTCTTGACGCGTACTACGAGTTCTGGGTGCTGCTGCCACCACGGACTACA
ATAACAATCAGAGGGCCGGGAGGAGGATCAGCGGTTGATCAACTTGGTAGGGGAGAGCCTGCGACTGCT
GGCAACACCTTTGTTGCACTGTCTGACCTGCGTGCAATCTGGCCTGCACGCCCCACGACACCTGCAT
GTGGTCCGGCCTATGTCTCACTACACCACCCCATGGTGTCCAGCAGGCAGCCATTCCCATACAGATCA
ATGTGGGAACCACTGTGACCATGACAGGAAATGGGACTCGGCCCCCAACTCCCAATGCAGAGGCACC
TCCCCCTGGTCTGGCAGGCCTCATCCGTGGCTCCGTCTTCTACCAATGTCGAGTCTCAGCTGAGGGG
GCTCCCCGCCAGGTCCAGTCCCCGCCAGCCACCGCCAGGGTCCATCCGATTTCCACCAGA
GTGTGAAACCCGTGGTTCATGATGCACATGAACATTCAAGATTCTGGCACACAGCCTGGTGGTGTCCGAG
TGCTCCACTGGCCCCCTGGGACCCCTGGTTCATGGCAAACCTGGGACAGCAGGTGCCAGGCTCCCA



[View online »](#)

ACAGCTCCAACCCGGGTGGTGATTGCCCGGCCACTCCTCCACAGGCTCGGCCTTCCCATCCTGGAGGGC
CCCCAGTCTCTGGGACTGCAGGGCGCCGGTCTGGGTACCAATGCCTCGTTGGCCAGATGGTGAGCGG
CCTTGTGGGGCAGCTTCTTATGCAGCCAGTCTTGTGGCTCAGGGGACCCAGGTATGGTCCACCGCCA
GCCCCTGCCACTGCTTCTGCCAGTGTGGCACCACCAACACAGCTACCACAGCTGGCCCCGCTCTGGGG
GGCCTGCCAGCCTCCACCCACCCTCAACCCTCCATGGTGTATCTTCACTTCTCAGCTTCTGGGGAA
CCTGTAGGGCTGCAGGGCCAGGGCTGGAGGGCCTGGTGTGGCTTCTCCACCATCACTGTGGCGATG
CCTGGTGTCCCTGCCTTCTCCAAGGCATGACTGACTTCTTGCAGGCAACACAGACAGCCCTCCACCAC
CCCCACCTCCTCCACCCACCACCTGCCCCAGAGCAGCAGACCATGCCCCACCAGGCTCCCTTCTGG
TGGCGCAGGGAGTCTGGAGGCCTGGGTCTTGGAGCCTGTACCCGGAGTTTTTTACCTCAGTGGTGCAG
GGTGTGCTCAGCTCCCTGCTGGGCTCCCTGGGGCTCGGGCTGGCAGCAGTAAAAGTATTGCTGCCTTCA
TACAACGCCTCAGTGGATCCAGCAACATCTTTGAGCCTGGAGCTGATGGGGCCCTGGATTCTTTGGGGC
CTTGCTTCTCTTCTGTGCCAGAACTTCTCTATGGTGGACGTAGTGTGCTTCTCCATGGGCATTTCCAG
CCACTACAACGGCTCCAGCCCCAGCTGCGATCCTTCTCCACCAGCACTACCTGGGTGGTCAAGAGCCCA
CAGCCAGTAACATCCGGATGGCAACCCACACATTGATCACGGGGCTAGAAGAGTATGTGCGGGAGAGTTT
TTCCTTGGTGCAGTTTCCAGCAGGTGTGGACATCATCCGGACAAACCTGGAATTTCTCCAAGAGCAGTTT
AATAGCATTGCTGCGCATGTGCTGCATTGCACAGATAGTGGATTTGGGGCCCGGTTGCTGGAGTTGTGTA
ACCAAGGCCTGTTTGAATGCCTGGCCCTAAACCTGCACTGCTTGGGGGGACAGCAGATGGAGCTTGTGCTG
TGTATCAATGGCCGAATTCGTGATGTCTCGTGGGGTGAATCCCTCCTTGGTGGAGCTGGCTGACCACT
ATGATGGGACTGAGGCTTCAAGTGGTACTGGAGCACATGCCTGTAGGCCCTGATGCCATTCTCAGATACG
TTCGCAGGGTTGGTGATCCCCCAGCCACTTCTGAGGAGCCAATGGAAGTTCAGGGAGCAGAAAGAGC
TCCCCCTGAGCCTCAGCGGGAGAATGCTTCCCCAGCCCTGGAACAACAGCAGAAGAGGCCATGTCCCGA
GGTCCACCTCCTGCTCCTGAGGGGGCTCCCGGGATGAACAGGATGGAGCTTCACTGAGACAGAACCTT
GGGCAGCTGCAGTCCCCCAGAATGGGTCCCTATTATCCAGCAGGACATTCAGAGCCAGCGGAAGGTGAA
ACCGCAGCCCCCTCTGAGTGTGCTACCTCAGTGGTATGCCTGCCAAGAGACGCAAGACGATGCAGGGT
GAGGGCCCCAGCTGCTTCTCTCAGAGGCTGTGAGCCGGGCAGCTAAGGCAGCCGGAGCTCGGCCCTGA
CGAGCCCCGAGAGCCTGAGCCGGGACCTGGAGGCACCAGAGGTTCAAGAGAGCTACAGGCAGCAGCTCCG
GTCTGATATACAAAAACGACTGCAGGAAGACCCCAACTACAGTCCCAGCGCTTCCCAATGCCAGCGG
GCCTTTGCTGATGATCCT

ACGCGTACGCGGGCGCTCGAGCAGAACTCATCTCAGAAGAGGATCTGGCAGCAATGATATCCTGGATT
ACAAGGATGACGACGATAAGGTTTAA

Protein Sequence: >RC215646 representing NM_080703
 Red=Cloning site Green=Tags(s)

MEPNDSTSTAVEEPDSLEVLVKTLDSTRTFIVGAQMNVEKFKEHIAASVSIPISEKQRLIYQGRVLQDDK
 KLQEYNVGGKVIHLVERAPPQTHLPSGASSGTGSASATHGGGSPGTRGPGASVHDRNANSYVMVGT
 PSDGSAVDVHINMEQAPIQSEPRVRLVMAQHMRDIQTLLSRMECRGGPQPQHSQPPPQPAVTPEPVAL
 SSQTSEPVSEAPPREPMEAEVEERAPAQNPELTPGPAPAGPTPAPETNAPNHPSPAIEYVEVLQELQRL
 ESRLQPFLLQRYEYVLAATTDYNNHHEGREEDQRLINLVGESLRLGNTFVALSDLRCNLACTPPRHLH
 VVRPMSHYTTPMVLQAAIPIQINVTMTGNGTRPPPTPNAEAPPPGPGQASSVAPSSTNVSSAEG
 APPPGPAPPATSHPRVIRISHQSEPVVMMHMIQDSGTQPGGVPSAPTGPLGPPGHGQTLGQQVPGFP
 TAPTRVVIARPTPPQARPSHPGGPPVSGTLQAGLGTNASLAQMVSGLVGQLMQPVLVAQGT
 PGMAPPAPATASASAGTTNTATTAGPAPGGPAQPPPTPQPSMADLQFSQLLGNLLGPAGPGAGGPGV
 SPTITVAMPGVPAFLQGMTDFLQATQTAPPPPPPPPPPPAPEQQTMPGGSPSGGAGSPGGLGLESL
 SPEFFT
 SVVQ
 GVLSSLGSLGARAGSSEIAAFIQRLSGSSNIFEPGADGALGFFGALLSLLCQNF
 SMVDVVMLLHGHFQ
 PLQRLQPLRSFFHQHYLGGQEPTPSNIRMATHTLITGLEEYVRESFSLVQVQPGVDI
 IRTNLEFLQE
 QF
 NSIAAHVLHCTDSGFGARLLELCNQGLFECLALNLHCLGGQME
 LAAVINGRIRMSRGNPSLVSWLTT
 MMGLRLQVLEHMPVGPDAILRYVRRVGDPPQPLPEEPMVQGAERASPEPQRENAS
 PAPGTTAEAMSR
 GPPPAPEGGRDEQDGASAE
 TEPWAAAVPPEWVPIIQQDIQSQRKVKP
 PPLSDAYLSGMPAKRRKTMQG
 EGPQLLLSEAVSRAAKAAGARPLT
 SPESLSRDLEAPEVQESYRQQLRSDI
 QKRLQEDPNYSPQRFPNAQR
 AFADDP

TRTRPLEQKLISEEDLAANDILDYKDDDDKV

Chromatograms: https://cdn.origene.com/chromatograms/mk6168_e04.zip

Restriction Sites: SgfI-MluI

Cloning Scheme:

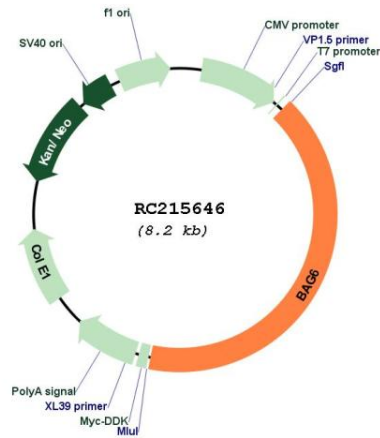


ACCN: NM_080703

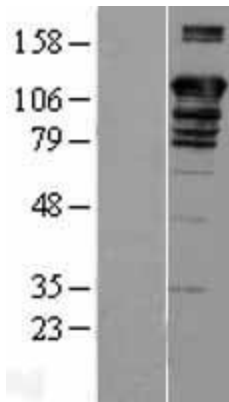
ORF Size: 3378 bp

OTI Disclaimer:	The molecular sequence of this clone aligns with the gene accession number as a point of reference only. However, individual transcript sequences of the same gene can differ through naturally occurring variations (e.g. polymorphisms), each with its own valid existence. This clone is substantially in agreement with the reference, but a complete review of all prevailing variants is recommended prior to use. More info
OTI Annotation:	This clone was engineered to express the complete ORF with an expression tag. Expression varies depending on the nature of the gene.
Components:	The ORF clone is ion-exchange column purified and shipped in a 2D barcoded Matrix tube containing 10ug of transfection-ready, dried plasmid DNA (reconstitute with 100 ul of water).
Reconstitution Method:	<ol style="list-style-type: none"> 1. Centrifuge at 5,000xg for 5min. 2. Carefully open the tube and add 100ul of sterile water to dissolve the DNA. 3. Close the tube and incubate for 10 minutes at room temperature. 4. Briefly vortex the tube and then do a quick spin (less than 5000xg) to concentrate the liquid at the bottom. 5. Store the suspended plasmid at -20°C. The DNA is stable for at least one year from date of shipping when stored at -20°C.
RefSeq:	NM_080703.3
RefSeq Size:	3755 bp
RefSeq ORF:	3381 bp
Locus ID:	7917
UniProt ID:	P46379
Cytogenetics:	6p21.33
Protein Families:	Druggable Genome, Stem cell - Pluripotency
MW:	118.5 kDa
Gene Summary:	This gene was first characterized as part of a cluster of genes located within the human major histocompatibility complex class III region. This gene encodes a nuclear protein that is cleaved by caspase 3 and is implicated in the control of apoptosis. In addition, the protein forms a complex with E1A binding protein p300 and is required for the acetylation of p53 in response to DNA damage. Multiple transcript variants encoding different isoforms have been found for this gene. [provided by RefSeq, Jul 2008]

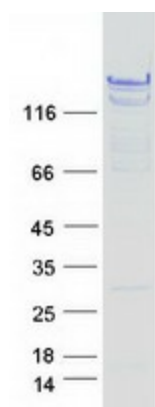
Product images:



Circular map for RC215646



Western blot validation of overexpression lysate (Cat# [LY420631]) using anti-DDK antibody (Cat# [TA50011-100]). Left: Cell lysates from untransfected HEK293T cells; Right: Cell lysates from HEK293T cells transfected with [RC219255] using transfection reagent MegaTran 2.0 (Cat# [TT210002]).



Coomassie blue staining of purified BAG6 protein (Cat# [TP315646]). The protein was produced from HEK293T cells transfected with BAG6 cDNA clone (Cat# RC215646) using MegaTran 2.0 (Cat# [TT210002]).