

Product datasheet for **RC215636**

MACROD2 (NM_001033087) Human Tagged ORF Clone

Product data:

Product Type:	Expression Plasmids
Product Name:	MACROD2 (NM_001033087) Human Tagged ORF Clone
Tag:	Myc-DDK
Symbol:	MACROD2
Synonyms:	C2orf133; C20orf133
Mammalian Cell Selection:	Neomycin
Vector:	pCMV6-Entry (PS100001)
E. coli Selection:	Kanamycin (25 ug/mL)
ORF Nucleotide Sequence:	>RC215636 ORF sequence Red=Cloning site Blue=ORF Green=Tags(s)

TTTTGTAATACGACTCACTATAGGGCGGCCGGAATTCGTCGACTGGATCCGGTACCGAGGAGATCTGCC
GCC**CGATCGCC**

ATGAATGAGTTTTTCTCCGTAGACGATAATAATGAAGAAGAAGAGGATGTTGAAATGAAAGAAGATTCAG
ATGAGAACGGTCCAGAGGAGAAGCAAAGTGTGGAAGAAATGGAAGAGCAGAGCCAAGATGCAGATGGTGT
CAACACTGTCCTGTCGCCGGCCCTGCTTCAGAAGAGGCAGTTGAAGACTGTAAGATGAAGATTTTCA
AAGGATGAAAATATTACAAAAGGCGGTGAAGTACAGATCATTCTGTGCGTGACCAAGATCATCCCGATG
GACAAGAGAATGATTCAACGAAGAATGAAATAAAATTGAAACAGAATCGCAGAGCTCATATATGAAAC
AGAAGAATTTTCATAAACAAGAAGATGCCGTGATTGTGGAGCAACCAGAAGTATTCCATTAACAGAG
GACCAAGAAGAAAAAGAAGGTGAAAAAGCTCCAGGCGAGGACACACCTAGGATGCCTGGGAAAAAGTGAAG
GCTCCAGTGACCTAGAAAATACTCCAGGTCTGATGTTGAAATGAATAGTCAGGTTGACAAGGTAATGA
CCCAACAGAGAGTCAACAAGAAGATCAACTAATAGCAGGGGCACAAGATGAAGCGAAGGAACAAAGAAAT
GGAAGTAA

ACGCGTACGCGGGCCGCTCGAGCAGAACTCATCTCAGAAGAGGATCTGGCAGCAATGATATCCTGGATT
ACAAGGATGACGACGATAAGGTTTAA



[View online »](#)

Protein Sequence: >RC215636 protein sequence
Red=Cloning site Green=Tags(s)

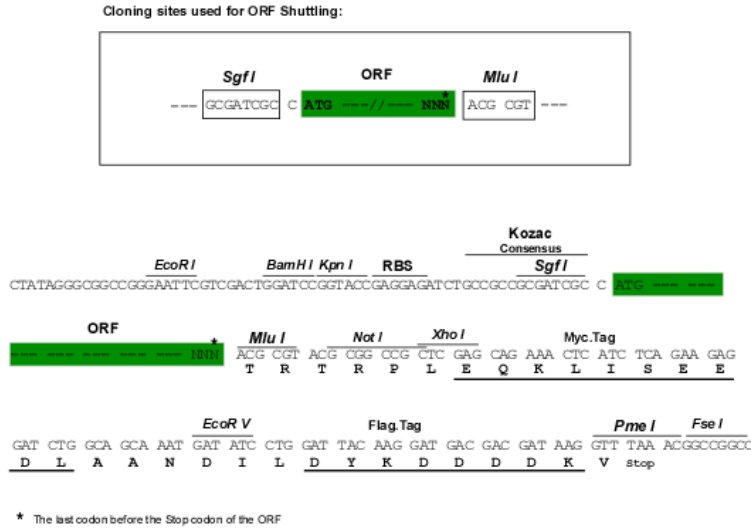
MNEFFSVDDNNEEEEDVEMKEDSDENGPEEKQSVEEMEEQSQDADGVNTVTVPGPASEEAVEDCKDEDFA
 KDENITKGGEVTDHSVRDQDHPDQGQENDSTKNEIKIETESQSSYMETEELSSNQEDAVIVEQPEVIPLTE
 DQEEKEGEKAPGEDTPRMPGKSEGSSDLENTPGPDVEMNSQVDKVNDPTESSQEDQLIAGAQDEAKEQRN
 GTK

TRTRPLEQKLISEEDLAANDILDYKDDDDKV

Chromatograms: https://cdn.origene.com/chromatograms/mk6599_e04.zip

Restriction Sites: SgfI-MluI

Cloning Scheme:



ACCN: NM_001033087

ORF Size: 639 bp

OTI Disclaimer: The molecular sequence of this clone aligns with the gene accession number as a point of reference only. However, individual transcript sequences of the same gene can differ through naturally occurring variations (e.g. polymorphisms), each with its own valid existence. This clone is substantially in agreement with the reference, but a complete review of all prevailing variants is recommended prior to use. [More info](#)

OTI Annotation: This clone was engineered to express the complete ORF with an expression tag. Expression varies depending on the nature of the gene.

Components: The ORF clone is ion-exchange column purified and shipped in a 2D barcoded Matrix tube containing 10ug of transfection-ready, dried plasmid DNA (reconstitute with 100 ul of water).

Reconstitution Method:

1. Centrifuge at 5,000xg for 5min.
2. Carefully open the tube and add 100ul of sterile water to dissolve the DNA.
3. Close the tube and incubate for 10 minutes at room temperature.
4. Briefly vortex the tube and then do a quick spin (less than 5000xg) to concentrate the liquid at the bottom.
5. Store the suspended plasmid at -20°C. The DNA is stable for at least one year from date of shipping when stored at -20°C.

RefSeq: [NM_001033087.2](#)

RefSeq Size: 4425 bp

RefSeq ORF: 642 bp

Locus ID: 140733

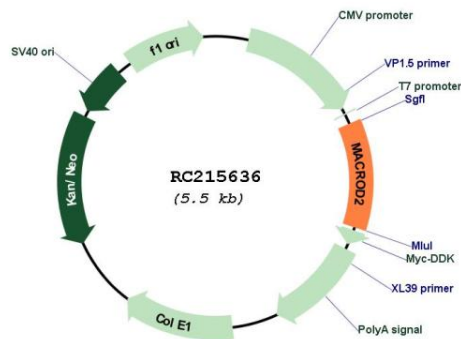
UniProt ID: [A1Z1Q3](#)

Cytogenetics: 20p12.1

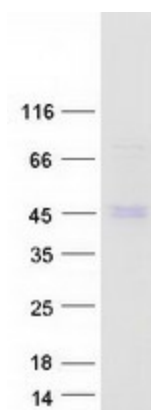
MW: 23.6 kDa

Gene Summary: The protein encoded by this gene is a deacetylase involved in removing ADP-ribose from mono-ADP-ribosylated proteins. The encoded protein has been shown to translocate from the nucleus to the cytoplasm upon DNA damage. [provided by RefSeq, May 2017]

Product images:



Circular map for RC215636



Coomassie blue staining of purified MACROD2 protein (Cat# [TP315636]). The protein was produced from HEK293T cells transfected with MACROD2 cDNA clone (Cat# RC215636) using MegaTran 2.0 (Cat# [TT210002]).