

## Product datasheet for **RC215631**

### **Ecat1 (KHDC3L) (NM\_001017361) Human Tagged ORF Clone**

#### Product data:

Product Type:	Expression Plasmids
Product Name:	Ecat1 (KHDC3L) (NM_001017361) Human Tagged ORF Clone
Tag:	Myc-DDK
Symbol:	Ecat1
Synonyms:	C6orf221; ECAT1; HYDM2
Mammalian Cell Selection:	Neomycin
Vector:	pCMV6-Entry (PS100001)
E. coli Selection:	Kanamycin (25 ug/mL)
ORF Nucleotide Sequence:	>RC215631 representing NM_001017361 Red=Cloning site Blue=ORF Green=Tags(s)

TTTTGTAATACGACTCACTATAGGGCGGCCGGAATTCGTCGACTGGATCCGGTACCGAGGAGATCTGCC  
GCC**CGATCGCC**

ATGGACGCTCCCAGGCGGTTTCCGACGCTCGTGCAACTGATGCAGCCAAAAGCAATGCCAGTGGAGGTGC  
TCGGTCACCTCCCTAAGCGGTTCTCCTGGTTCCACTCTGAGTTCCTGAAGAATCCGAAGGTAGTTCGCT  
TGAGGTTTGGCTGGTGGAAAAGATCTTCGGCCGGGGCGGAGAACGCATCCCGCACGTCCAGGGTATGTCC  
CAAATCTTGATTCACGTGAATCGATTGGACCCTAACGGCGAGGCTGAGATCTTGGTATTTGGGAGGCCTT  
CTTACCAGGAGGACACAATCAAGATGATCATGAACCTGGCTGACTATCACCGCCAGCTCCAGGCGAAAGG  
CTCAGGAAAGGCCCTCGCCAGGATGTCGCCACTCAGAAGGCCGAGACCCAGCGGTCTTCAATAGAAGTC  
CGGGAGGCCGGGACGCAGCGTTCGGTGGAGGTCCGGGAGGCCGGGACCCAGCGTTCGGTGGAAAGTCCAGG  
AGGTCGGGACACAGGTTCTCCGGTGGAGGTGCAGGAGGCCGGGACCCAGCAGTCTTCCAGGCTGCCAA  
CAAGTCGGGGACCCAGCGATCCCCGAAGCTGCCAGCAAGGCAGTGACCCAGCGGTTTCGCAGGATGCC  
CGGGACCCAGTTACTAGATTA

**ACGCGT**ACGCGGGCGCTCGAGCAGAAACTCATCTCAGAAGAGGATCTGGCAGCAAATGATATCCTGGATT  
ACAAGGATGACGACGATAAGGTTTAA



[View online »](#)

**Protein Sequence:** >RC215631 representing NM\_001017361  
Red=Cloning site Green=Tags(s)

MDAPRRFPTLVQLMQPKAMPVEVLGHLPKRFSWFHSEFLKNPKVVRLEVWLVEKIFGRGGERIPHVQGM  
 QILIHVNRLDPNGEAEILVFGRPYQEDTIKMIMNLADYHRQLQAKGSGKALAQDVATQKAETQRSSIEV  
 REAGTQRSVEVREAGTQRSVEVQEVGTQSPVEVQEAQTQQLAANKSGTQRSPEAASKAVTQRFREDA  
 RDPVTRL

TRTRPLEQKLISEEDLAANDILDYKDDDDKV

**Chromatograms:** [https://cdn.origene.com/chromatograms/mk6116\\_g08.zip](https://cdn.origene.com/chromatograms/mk6116_g08.zip)

**Restriction Sites:** SgfI-MluI

**Cloning Scheme:**



**ACCN:** NM\_001017361

**ORF Size:** 651 bp

**OTI Disclaimer:** The molecular sequence of this clone aligns with the gene accession number as a point of reference only. However, individual transcript sequences of the same gene can differ through naturally occurring variations (e.g. polymorphisms), each with its own valid existence. This clone is substantially in agreement with the reference, but a complete review of all prevailing variants is recommended prior to use. [More info](#)

**OTI Annotation:** This clone was engineered to express the complete ORF with an expression tag. Expression varies depending on the nature of the gene.

**Components:** The ORF clone is ion-exchange column purified and shipped in a 2D barcoded Matrix tube containing 10ug of transfection-ready, dried plasmid DNA (reconstitute with 100 ul of water).

**Reconstitution Method:**

1. Centrifuge at 5,000xg for 5min.
2. Carefully open the tube and add 100ul of sterile water to dissolve the DNA.
3. Close the tube and incubate for 10 minutes at room temperature.
4. Briefly vortex the tube and then do a quick spin (less than 5000xg) to concentrate the liquid at the bottom.
5. Store the suspended plasmid at -20°C. The DNA is stable for at least one year from date of shipping when stored at -20°C.

**RefSeq:** [NM\\_001017361.3](#)

**RefSeq Size:** 1063 bp

**RefSeq ORF:** 654 bp

**Locus ID:** 154288

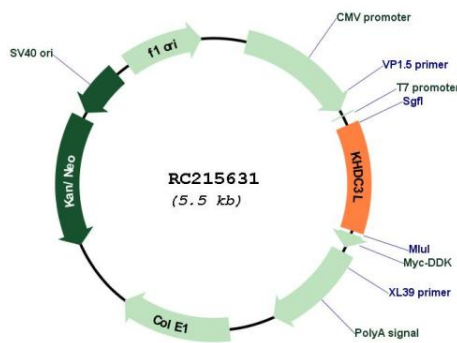
**UniProt ID:** [Q58718](#)

**Cytogenetics:** 6q13

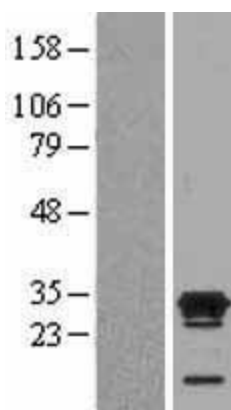
**MW:** 24.1 kDa

**Gene Summary:** The protein encoded by this gene belongs to the KHDC1 family, members of which contain an atypical KH domain that may not bind RNA like canonical KH domains. This gene is specifically expressed in the oocytes, and recent studies suggest that it may function as a regulator of genomic imprinting in the oocyte. Mutations in this gene are associated with recurrent biparental complete hydatidiform mole. [provided by RefSeq, Dec 2011]

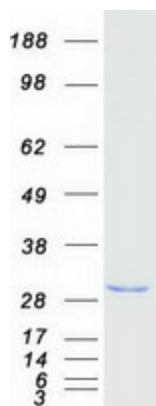
### Product images:



Circular map for RC215631



Western blot validation of overexpression lysate (Cat# [LY400398]) using anti-DDK antibody (Cat# [TA50011-100]). Left: Cell lysates from untransfected HEK293T cells; Right: Cell lysates from HEK293T cells transfected with RC215631 using transfection reagent MegaTran 2.0 (Cat# [TT210002]).



Coomassie blue staining of purified KHDC3L protein (Cat# [TP315631]). The protein was produced from HEK293T cells transfected with KHDC3L cDNA clone (Cat# RC215631) using MegaTran 2.0 (Cat# [TT210002]).