

Product datasheet for RC215628

EDA (NM_001005610) Human Tagged ORF Clone

Product data:

Product Type:	Expression Plasmids
Product Name:	EDA (NM_001005610) Human Tagged ORF Clone
Tag:	Myc-DDK
Symbol:	EDA
Synonyms:	ECTD1; ED1; ED1-A1; ED1-A2; EDA-A1; EDA-A2; EDA1; EDA2; HED; HED1; ODT1; STHAGX1; TNLG7C; XHED; XLHED
Mammalian Cell Selection:	Neomycin
Vector:	pCMV6-Entry (PS100001)
E. coli Selection:	Kanamycin (25 ug/mL)
ORF Nucleotide Sequence:	>RC215628 representing NM_001005610 Red=Cloning site Blue=ORF Green=Tags(s)

TTTTGTAATACGACTCACTATAGGGCGGCCGGAATTCGTCGACTGGATCCGGTACCGAGGAGATCTGCC
GCCGCGATCGCC

ATGGGCTACCCGGAGGTGGAGCGCAGGGAACCTGCCTGCAGCAGCGCCGGGAGCGAGGGAGCCAGG
GCTGCGGGTGTGGCGGGGCCCTGCCGGGCGGGCAAGGGAACAGCTGCCTGCTCTTCTGGGTTTCTT
TGGCCTCTCGCTGGCCCTCCACCTGCTGACGTTGTGCTGCTACCTAGAGTTGCGCTCGGAGTTGCGGCGG
GAACGTGGAGCCGAGTCCCCTTGGCGGCTCGGGCACCCTGGCACCTCTGGCACCTAAGCAGCCTCG
GTGGCCTCGACCCTGACAGCCCCATCACCAGTCACCTTGGGCAGCCGTACCTAAGCAGCAGCCATTGGA
ACCGGGAGAAGCCGCACTCCACTCTGACTCCCAGGACGGGCACCAGATGGCCCTATTGAATTTCTTCTTC
CCTGATGAAAAGCCATACTCTGAAGAAGAAAGTAGGCGTGTTCGCCGAATAAAAGAAGCAAAGCAATG
AAGGAGCAGATGGTAAGTCTACTCAGTTGATCCTTTATCACTTC

ACGCGTACGCGGCCGCTCGAGCAGAACTCATCTCAGAAGAGGATCTGGCAGCAAATGATATCCTGGATT
ACAAGGATGACGACGATAAGGTTTAA

Protein Sequence:	>RC215628 representing NM_001005610 Red=Cloning site Green=Tags(s)
-------------------	---

MGYPEVERRELLPAAAPRERGSQCGCGGAPARAGEGNSCLLFLGFFGLSLALHLLTLCCYLELRSELRR
ERGAESRLGGSGTPGTSGLTSSLGGLDPSPITSHLGQPSKQPLEPGEAALHSDSQDGHQMALNFFP
PDEKPYSEESRRVRRNKRKSNEGADGKSTQLILYHF

TRTRPLEQKLISEEDLAANDILDYKDDDDKV

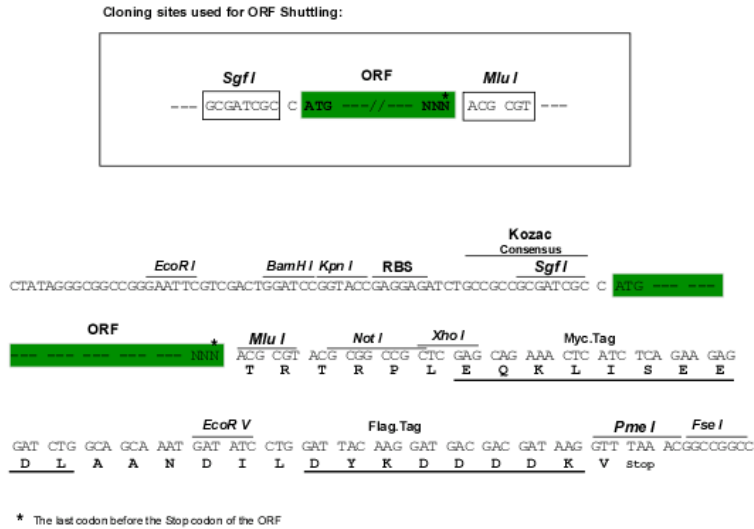


[View online »](#)

Chromatograms: https://cdn.origene.com/chromatograms/mk8004_c02.zip

Restriction Sites: SgfI-MluI

Cloning Scheme:



ACCN: NM_001005610

ORF Size: 534 bp

OTI Disclaimer: The molecular sequence of this clone aligns with the gene accession number as a point of reference only. However, individual transcript sequences of the same gene can differ through naturally occurring variations (e.g. polymorphisms), each with its own valid existence. This clone is substantially in agreement with the reference, but a complete review of all prevailing variants is recommended prior to use. [More info](#)

OTI Annotation: This clone was engineered to express the complete ORF with an expression tag. Expression varies depending on the nature of the gene.

Components: The ORF clone is ion-exchange column purified and shipped in a 2D barcoded Matrix tube containing 10ug of transfection-ready, dried plasmid DNA (reconstitute with 100 ul of water).

Reconstitution Method:

1. Centrifuge at 5,000xg for 5min.
2. Carefully open the tube and add 100ul of sterile water to dissolve the DNA.
3. Close the tube and incubate for 10 minutes at room temperature.
4. Briefly vortex the tube and then do a quick spin (less than 5000xg) to concentrate the liquid at the bottom.
5. Store the suspended plasmid at -20°C. The DNA is stable for at least one year from date of shipping when stored at -20°C.

RefSeq: [NM_001005610.1](#), [NP_001005610.1](#)

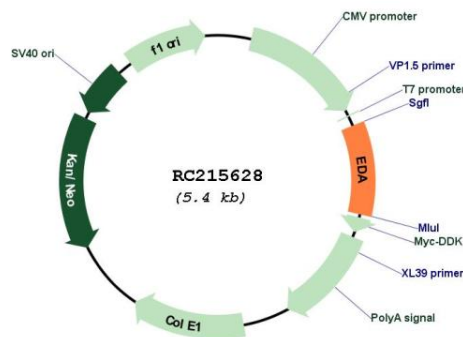
RefSeq Size: 1089 bp

RefSeq ORF: 408 bp

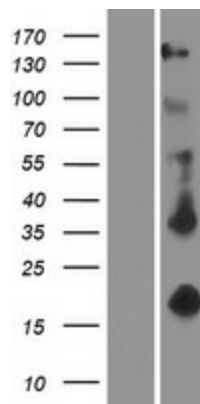
Locus ID: 1896

UniProt ID: [Q92838](#)
Cytogenetics: Xq13.1
Protein Families: Druggable Genome, Secreted Protein, Transmembrane
Protein Pathways: Cytokine-cytokine receptor interaction
MW: 19 kDa
Gene Summary: The protein encoded by this gene is a type II membrane protein that can be cleaved by furin to produce a secreted form. The encoded protein, which belongs to the tumor necrosis factor family, acts as a homotrimer and may be involved in cell-cell signaling during the development of ectodermal organs. Defects in this gene are a cause of ectodermal dysplasia, anhidrotic, which is also known as X-linked hypohidrotic ectodermal dysplasia. Several transcript variants encoding many different isoforms have been found for this gene. [provided by RefSeq, Jul 2008]

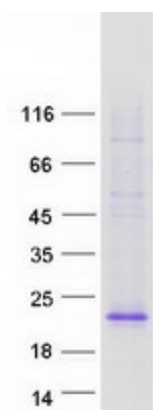
Product images:



Circular map for RC215628



Western blot validation of overexpression lysate (Cat# [LY423629]) using anti-DDK antibody (Cat# [TA50011-100]). Left: Cell lysates from untransfected HEK293T cells; Right: Cell lysates from HEK293T cells transfected with RC215628 using transfection reagent MegaTran 2.0 (Cat# [TT210002]).



Coomassie blue staining of purified EDA protein (Cat# [TP315628]). The protein was produced from HEK293T cells transfected with EDA cDNA clone (Cat# RC215628) using MegaTran 2.0 (Cat# [TT210002]).