

Product datasheet for RC215627

TRPM3 (NM_206944) Human Tagged ORF Clone

Product data:

Product Type:	Expression Plasmids
Product Name:	TRPM3 (NM_206944) Human Tagged ORF Clone
Tag:	Myc-DDK
Symbol:	TRPM3
Synonyms:	GON-2; LTRPC3; MLSN2
Vector:	pCMV6-Entry (PS100001)
E. coli Selection:	Kanamycin (25 ug/mL)
Cell Selection:	Neomycin
ORF Nucleotide Sequence:	>RC215627 representing NM_206944 Red=Cloning site Blue=ORF Green=Tags(s)

TTTTGTAATACGACTCACTATAGGGCGCCGGAATTCGTCGACTGGATCCGGTACCGAGGAGATCTGCC
GCCGCGATCGCC

ATGTATGTGCGAGTATCTTTTGATACAAAACCTGATCTCCTCTTACACCTGATGACCAAGGAATGGCAGT
TGGAGCTTCCCAAGCTTCTCATCTGTCCATGGGGCCTGCAGAACTTTGAACTCCAGCCAAAACCTCAA
GCAAGTCTTTGGAAAGGGCTCATCAAAGCAGCAATGACAACCTGGAGCGTGGATATTCACCTGGAGGGTT
AACACAGGTGTTATTCGTCATGTTGGCGATGCCTTGAAGGATCATGCCTCTAAGTCTCGAGGAAAGATAT
GCACCATAGGTATTGCCCTGGGGAATTGGGAAAACAGGAGGACCTCATTGGAAGAGATGTTGTCCG
GCCATACCAGACCATGTCCAATCCCATGAGCAAGCTCACTGTTCTCAACAGCATGCATTCCTCACTTCACT
CTGGCTGACAACGGGACCACTGGAAAATATGGAGCAGAGGTGAACTTCGAAGACAACCTGGAAAAGCATA
TTTCACTCCAGAAGATAAACACAAGAATCGGTCAAGGTGTTCTGTGGTGGCACTCATAGTGAAGGAGG
ACCCAATGTGATCTCGATTGTTTGGAGTACCTTCGAGACACCCCTCCCGTCCAGTGGTGTCTGTGAT
GGGAGTGGACGGGCATCGGACATCCTGGCCTTTGGGCATAAATACTCAGAAGAAGGCGGACTGATAAATG
AATCTTTGAGGGACAGCTGTTGGTACTATACAGAAGACTTTCACATACACTCGAACCCAAAGCTCAGCA
TCTGTTTATCATCCTCATGGAGTGCATGAAGAAGAAGGAATTGATTACGGTATTTTCGGATGGGATCAGAA
GGACACCAGGACATTGATTTGGCTATCCTGACAGCTTTACTCAAAGGAGCCAATGCCTCGCCCCAGACC
AACTGAGCTTAGCTTTAGCCTGGAACAGAGTCGACATCGCTCGCAGCCAGATCTTTATTTACGGGCAACA
GTGGCCGGTGGGATCTCTGGAGCAAGCCATGTTGGATGCCTTAGTTCTGGACAGAGTGGATTTTGTGAAA
TTACTCATAGAGAATGGAGTAAGCATGCACCGTTTTCTCACCATCTCCAGACTAGAGGAATTGTACAATA
CGAGACATGGGCCCTCAAATACATTGTACCACTGGTCAGGGATGTCAAAAAGGGAAACCTGCCCCAGCA
CTACAGAATCAGCCTGATTGACATCGGCCTGGTATCGAGTACCTGATGGCGGGGCTTATCGCTGCAAC
TACACGCGCAAGCGCTTCCGGACCTCTACCACAACCTCTCGGCCCAAGAGGGATGATATCCCTTGA
GGCGAGGAAGAAAGACAACCAAGAAACGTGAAGAAGAGGTGGACATTGACTTGGATGATCCTGAGATCAA
CCACTTCCCTTCCCTTTCCATGAGCTCATGGTGTGGGCTGTTCTCATGAAGCGGCAAGATGGCCCTG
TTCTTCTGGCAGCACGGTGGAGGCCATGGCCAAAGCCCTGGTGGCCTGCAAGCTCTGCAAGCCATGG



[View online »](#)

CTCATGAGGCCTCTGAGAACGACATGGTTGACGACATTTCCCAGGAGCTGAATCACAATTCAGAGACTT
TGGCCAGCTGGCTGTGGAGCTCCTGGACCAGTCTACAAGCAGGACGAACAGCTGGCCATGAAACTGCTG
ACGTATGAGCTGAAGAAGCTGGAGCAACGCCACGTGCCTGCAGCTTGCCGTGGCTGCCAAACCCGGACT
TCATCGCGCACACGTGCAGCCAGATGCTGCTCACCGACATGTGGATGGGCCGGCTCCGCATGCGCAAGAA
CTCAGGCCCTCAAGGTAATTCTGGGAATTCTACTTCTCCTTCAATTCTCAGCTTGGAGTTCAAGAACAAA
GACGACATGCCCTATATGTCTCAGGCCAGGAAATCCACCTCCAAGAGAAGGAGGCAGAAGAACCAGAGA
AGCCACAAAGGAAAAAGAGGAAGAGGACATGGAGCTCACAGCAATGTTGGGACGAAACAACGGGGAGTC
CTCCAGGAAGAAGGATGAAGAGGAAGTTTCAAGCAAGCACCAGTTAATCCCCCTCGGCAGAAAAATCTAT
GAATTCTACAATGCACCCATCGTGAAGTTCTGGTTCTACACACTGGCGTATATCGGATACCTGATGCTCT
TCAACTATATCGTGTAGTGAAGATGGAACGCTGGCCGTCACCCAGGAATGGATCGTAATCTCCTATAT
TTTCACCTGGGAATAGAAAAGATGAGAGAGATTCTGATGTCAGAGCCAGGGAAGTTGCTACAGAAAAGTG
AAGGTATGGTGCAGGAGTACTGGAATGTCACGGACCTCATCGCCATCCTTCTGTTTTCTGTCGGAATGA
TCCTTCGTCTCCAAGACCAGCCCTTCAAGAGTACGGGAGGGTCACTACTGCGTGAACATCATTTACTG
GTATATCCGTCTCCTAGACATCTTGGCGTGAACAAGTATTTGGGCCGTATGTAATGATGATTGAAAA
ATGATGATAGACATGATGACTTTGTCACTTATGCTGGTGGTTCTGATGAGCTTTGGGGTCCCGAGGC
AAGCCATCCTTTTTCCCAATGAGGAGCCATCATGGAAACTGGCCAAGAACATCTTCTACATGCCCTATTG
GATGATTTATGGGGAAGTGTGGCGGACCAGATAGACCCTCCCTGTGGACAGAATGAGACCCGAGAGGAT
GGTAAAAAATCCAGCTGCCTCCCTGCAAGACAGGAGCTTGGATCGTGGCCGATCATGGCCTGTACTC
TCTTAGTGGCAACATCTTGGTGGTCAACCTCCTCATTGCTGTCTTTAACAATACATTTTTGAAGTAAA
ATCGATATCCAACCAAGTCTGGAAGTTTCAAGAGTATCAGCTCATCATGACTTTCCATGAAAGGCCAGTT
CTGCCCCCACCAGTATCATCTTCAAGCCATGACCATGATATCCAGCACCCTGTGCTGCCGATGGAGGA
AACACGAGAGCGACCCGGATGAAAGGGACTACGGCCTGAAACTCTTATAACCGATGATGAGTCAAGAA
AGTACATGACTTTGAAGAGCAATGCATAGAAGAATACTTCAAGAGAAAAGGATGATCGGTTCAACTCAT
AATGATGAGAGGATACGGGTGACTTCAGAAAGGGTGGAGAACATGTCTATGCGGCTGGGAAGTCAACG
AGAGAGAGCACTCCATGAAGGCTTCACTCCAGACCGTGGACATCCGGCTGGCGCAGCTGGAAGACCTTAT
CGGGCGCATGGCCACGGCCCTGGAGCGCTGACAGGTCTGGAGCGGGCCGAGTCCAACAAAAATCCGCTCG
AGGACCTCGTCAACTGCACGGACGCGCTACATTGTCCGTGAGAGCAGCTTCAACAGCCAGGAAGGGA
ACACCTTCAAGCTCCAAGAGAGTATAGACCCTGCAGGTGAGGAGACCATGTCCCAACTTCTCAACCTT
AATGCCCGTATGCGAAGCCATTCTTTCTATTCCGTCAATATGAAAGACAAAGGTGGTATAGAAAAGTTG
GAAAGTATTTTTAAAGAAAGTCCCTGAGCCTACACCGGGCTACTAGTCCCACTCTGTAGCAAAAAGAC
CCAAAGCTCCTGCAGCCCTGCCAACACCTTGGCCATTGTTCTGATTCCAGAAGACCATCATCGTGTAT
AGACATCTATGTCTCTGCTATGGATGAGCTCCACTGTGATATAGACCCTTGGACAATCCGTGAACATC
CTTGGGCTGGGGAGCCAAGCTTTCAACTCCAGTACCTTCCACAGCCCTTCAAGTAGTGCCTATGCAA
CACTTGCACCCACAGACAGACCTCCAAGCCGGAGCATTGATTTTGGAGACATCACCTCCATGGACTAG
ATCTTTTTCTTCAACTACACCCACCTCCAGAATGCCAAAACCCCTGGGACTCAGAGCCTCCGATGTAC
CACACCATTGAGCGTTCCAAAAGTAGCCGCTACCTAGCCACCACACCTTTCTTCTAGAAGAGGCTCCCA
TTGTGAAATCTCATAGCTTTATGTTTTCCCTCAAGGAGCTATTATGCCAATTTGGGGTGCCTGTAAA
AACAGCAGAATACACAAGTATTACAGACTGTATTGACACAAGGTGTCAATGCCCTCAAGCAATTGCG
GACAGAGCTGCCTTCCCTGGAGGTCTTGGAGACAAAGTGGAGACTTAACTTGGTCCATCCAGAGCGAG
AAGCAGAAGTGTACCCAGCTCTGACAGTGGAGAGAATGAGGCCAAAGGCCGAGAGCCACCATTC
AATATCTCCAGGAGGTGATAACTCAGAGAGAACCTGTCCAACAACATCACTGTTCCCAAGATAGAG
CGCGCCAACAGCTACTCGGCAGAGGAGCAAGTGCGCCATATGCACACACCAGGAAGAGCTTCTCCATCA
GTGACAAACTCGACAGGCAGCGAACACAGCAAGCCTGCGAAAATCCCTTCCAGAGAAGCAAGTCTCCAA
GCCGGAGGGCCGAGGGGACAGCCTGTCCATGAGGAGACTGTCCAGAACATCGGCTTTCCAAAGCTTTGAA
AGCAAGCACAAAC

ACGCGTACGGGCGGCTCGAGCAGAAACTCATCTCAGAAGAGGATCTGGCAGCAATGATATCCTGGATT
ACAAGGATGACGACGATAAGGTTTAA

Protein Sequence: >RC215627 representing NM_206944
 Red=Cloning site Green=Tags(s)

MYVRVSDTKPDL LHLMTKEWQLELPKLLISVHGGLQNFELQPKLKQVFGKGLIKAAMTTGAWIFTGGV
 NTGIVIRHVGDAL KDHASKSRGICTIGIAPWGIENQEDLIGRDVVRPYQ TMSNPM SKLTVLNSMHSFI
 LADNGTTGKYGA EVKLRRQLEKHI SLQKINTRIGQGVPVVALIVEGGPNVISIVLEYLRDTPPVVVVCD
 GSGRASDILAFGHKYSEEGGLINESLRDQLLVTIQKTFYTRTQAQHLFIILMECKKKELITVFRMGSE
 GHQDIDLAILTALLKGANASAPDQLSLALAWN RVDIARSQIFIYQQWPVGSLEQAML DALVLD RVDVFK
 LLIENGVSMHRFLTISRLEELYNTRHGPSNTLYHLVRDVKKGNLPPDYRISLIDIGLVIEYLMGGAYRCN
 YTRKRFR TLYHNLF GPKRDDIPLRRGRKTTKKREEEVDIDLDDPEINHFPFPFHELMVWAVLMKRQKMAL
 FFWQHGE EAMAKALVACKLCKAMAHEASENDMVD DISQELNHNSRDFGQLAVELLDQSYKQDEQLAMKLL
 TYELKNWSNATCLQLAVAAKHRDFAHTCSQMLL TDMWMGRLRMRKNSGLKVILGILLPPSILSLEFKNK
 DDMPYMSQAQEIHLQEKEAEEPEKPTKEKEEEDMELTAMLGRNNGESSRKKDEEEVQSKHRLIPLGRKIY
 EFNAP IVKFWFYT LAYIGYLMFN YIVLVKMERWPSTQE WIVISYIFTLGIEKMR EILMSEPGKLLQKV
 KVWLQEYWNVTDLIAILLF SVGMILRLQDQPF RSDGRVIYCVNIIYWI RLLDIFGVNKYLG PYVMMIGK
 MMIDMMYFVIIMLVVLM SFGVARQAILFPNEEPSWKLAKNIFYMPYMMIYGEVFA DQIDPPCGQNETRED
 GKIIQLPPCKTGAWIVPAIMAC YLLVANILLVNL LIAVFNNTFFEVKSI SNQVWKFQRYQLIMTFHERPV
 LPPPLIIFSHMTMIFQHLCCRWRKHESDPDERDYGLKLFITDDELKKVHDFEEQCIEEYFREKDDRFNSS
 NDERIRVTSERVENMSMRLEEVNEREHSMKASLQTVDIRLAQLEDLIGRMATALERLTGLERAESNKIRS
 RTSSDCTDAAYIVRQSSFNSQEGNTFKLQESIDPAGEETMSPTSPTLMPRMRSHSFYSVNMKDKGGIEKL
 ESIFKERSLSLHRATSSHSVAK EPKAPAANTLAIVPDSRRPSSCIDIYVSAMDELHCDIDPLDNSVNI
 LGLGEP SFSTPVPSTAPSSAYATLAPTRPPSRSIDFEDITSMDTRSFSSDYTHLPECQNPWDSEPPMY
 HTIERSKSSRYLATT PFLLEEAPIVKSHSFMFSPSRSYANFGVPVKTA EYTSITDCIDTRCVNAPQAI A
 DRAAFP GGLGDKVEDLTCCHPEREAELSHPSDSSEENEAKGRRATIAISSQE GDNSERTL SNNITVPKIE
 RANSYSAEEPSAPYAHTRKSF SISKDLDRQRNTASLRNPFQRSKSSKPEGRGDSL SMRRLSRTSAFQSF E
 SKHN

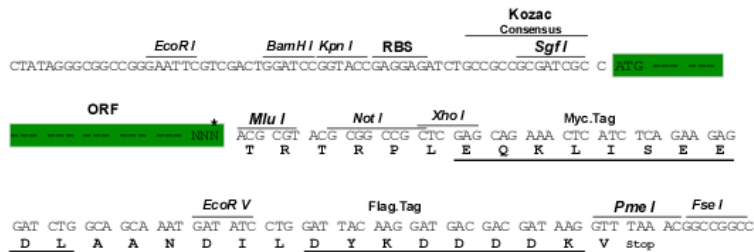
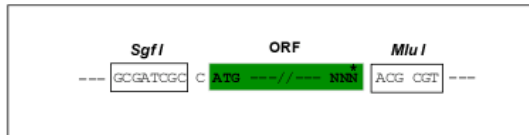
TRTRPLEQKLISEEDLAANDILDYKDDDDKV

Restriction Sites:

SgfI-MluI

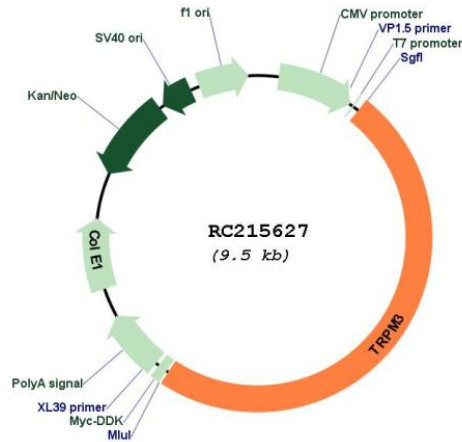
Cloning Scheme:

Cloning sites used for ORF Shuttling:



* The last codon before the Stop codon of the ORF

Plasmid Map:



ACCN: NM_206944

ORF Size: 4632 bp

OTI Disclaimer: The molecular sequence of this clone aligns with the gene accession number as a point of reference only. However, individual transcript sequences of the same gene can differ through naturally occurring variations (e.g. polymorphisms), each with its own valid existence. This clone is substantially in agreement with the reference, but a complete review of all prevailing variants is recommended prior to use. [More info](#)

OTI Annotation: This clone was engineered to express the complete ORF with an expression tag. Expression varies depending on the nature of the gene.

Components: The ORF clone is ion-exchange column purified and shipped in a 2D barcoded Matrix tube containing 10ug of transfection-ready, dried plasmid DNA (reconstitute with 100 ul of water).

Reconstitution Method:

1. Centrifuge at 5,000xg for 5min.
2. Carefully open the tube and add 100ul of sterile water to dissolve the DNA.
3. Close the tube and incubate for 10 minutes at room temperature.
4. Briefly vortex the tube and then do a quick spin (less than 5000xg) to concentrate the liquid at the bottom.
5. Store the suspended plasmid at -20°C. The DNA is stable for at least one year from date of shipping when stored at -20°C.

RefSeq:	NM_206944.5
RefSeq Size:	5910 bp
RefSeq ORF:	4635 bp
Locus ID:	80036
Cytogenetics:	9q21.12-q21.13
Protein Families:	Druggable Genome, Ion Channels: Transient receptor potential, Transmembrane
MW:	176.2 kDa
Gene Summary:	<p>The product of this gene belongs to the family of transient receptor potential (TRP) channels. TRP channels are cation-selective channels important for cellular calcium signaling and homeostasis. The protein encoded by this gene mediates calcium entry, and this entry is potentiated by calcium store depletion. Alternatively spliced transcript variants encoding different isoforms have been identified. [provided by RefSeq, Jul 2008]</p>