

Product datasheet for **RC215626**

CLCA4 (NM_012128) Human Tagged ORF Clone

Product data:

Product Type:	Expression Plasmids
Product Name:	CLCA4 (NM_012128) Human Tagged ORF Clone
Tag:	Myc-DDK
Symbol:	CLCA4
Synonyms:	CaCC; CaCC2
Mammalian Cell Selection:	Neomycin
Vector:	pCMV6-Entry (PS100001)
E. coli Selection:	Kanamycin (25 ug/mL)



[View online »](#)

ORF Nucleotide Sequence:

>RC215626 representing NM_012128
 Red=Cloning site Blue=ORF Green=Tags(s)

TTTTGTAATACGACTCACTATAGGGCGGCCGGAATTCGTGACTGGATCCGGTACCGAGGAGATCTGCC
 GCC**CGCATCGCC**

ATGGGGTTATTACAGAGGTTTTGTTTTCTTCTAGTTCTGTGCCTGCTGCACCAGTCAAATACTTCTTCA
 TTAAGCTGAATAATAATGGCTTTGAAGATATTGCATTGTTATAGATCCTAGTGTGCCAGAGATGAAAA
 AATAATTGAACAAATAGAGGATATGGTGACTACAGCTTCTACGTACCTGTTTGAAGCCACAGAAAAAGA
 TTTTTTTTCAAAAATGTATCTATATTAATTCCTGAGAATTGGAAGGAAAACTCAGTACAAAAGGCCAA
 AACATGAAAACCATAAACATGCTGATGTTATAGTTGCACCACCTACACTCCCAGGTAGAGATGAACCATA
 CACCAAGCAGTTCACAGAATGTGGAGAGAAAGGCGAATACATTCACTTACCCCTGACCTTCTACTTGG
 AAAAAACAAAATGAATATGGACCACCAGGCAAAGTGGTCCATGAGTGGGCTCACCTCCGGTGGGGAG
 TGTTTGATGAGTACAATGAAGATCAGCCTTCTACCGTGTAAGTCAAAAAAATCGAAGCAACAAGGTG
 TTCGCGAGGTATCTCTGGTAGAAAATAGAGTTTATAAGTGTCAAGGAGGCAGCTGTCTTAGTAGAGCATGC
 AGAATTGATTCTACAACAAAAGTATGGAAAAGATTGTCAATCTTTCCCTGATAAAGTACAAAACAGAAA
 AAGCATCCATAATGTTTTATGCAAAGTATTGATTCTGTTGTTGAATTTGTAAACGAAAAAACCATATCA
 AGAAGCTCCAAGCCTACAAAACATAAAGTGCAATTTTAGAAGTACATGGGAGGTGATTAGCAATCTGAG
 GATTTTAAAAACCCATACCCATGGTGACACCCTCCTCCACCTGTCTTCTCATTGCTGAAGATCAGTC
 AAAGAATTGTGTGCTTAGTTCTTGATAAGTCTGGAAGCATGGGGGTAAAGACCGCTAAATCGAATGAA
 TCAAGCAGCAAAACATTTCTGCTGCAGACTGTTGAAAATGGATCCTGGTGGGGATGGTTCACCTTGGAT
 AGTACTGCCACTATTGTAATAAGCTAATCCAAATAAAAAAGCAGTGTAAAGAAACACACTCATGGCAG
 GATTACCTACATATCCTCTGGGAGGAATCCATCTGCTGGAATTAATATGCATTTCCAGTATTGG
 AGAGCTACATTTCCAAGTTCGATGGATCCGAAGTACTGCTGCTGACTGATGGGGAGGATAAACAAGTCAAGT
 TCTTGATTGATGAAGTGAACAAAGTGGGGCCATTGTTCAATTTATTGCTTTGGGAAGACTGCTGATG
 AAGCAGTAATAGAGATGAGCAAGATAACAGGAGGAAGTCAATTTTATGTTTCAGATGAAGCTCAGAACA
 TGGCCTCATTGATGCTTTGGGGCTCTTACATCAGGAAATACTGATCTCTCCAGAAAGTCCCTTACAGCTC
 GAAAGTAAAGGATTAACACTGAATAGTAATGCCTGGATGAACGACACTGCATAATTGATAGTACAGTGG
 GAAAGGACAGTTCCTTCTCATCAGTGAACAGTCTGCCTCCAGTATTTCTCTCTGGGATCCAGTGG
 AACATAATGAAAATTTACAGTGGATGCAACTTCCAAATGGCCTATCTCAGTATTCCAGGAAGTCA
 AAGGTGGGCACCTTGGGCATACAATCTTCAAGCCAAAGCGAACCCAGAAACATTAAGTATTACAGTAACTT
 CTCGAGCAGCAAAATTTCTGTGCCTCCAATCACAGTGAATGCTAAAATGAATAAGGACGTAAACAGTTT
 CCCAGCCCAATGATTGTTTACGCAGAAATTTCAAGGATATGTACCTGTTCTTGGAGCCAATGTGACT
 GCTTTCATTGAATCACAGAATGGACATACAGAAGTTTTGGAACTTTTGGATAATGGTGCAGGCGCTGATT
 CTTTCAAGAAATGATGGAGTCTACTCCAGGTATTTACAGCATATACAGAAAATGGCAGATATAGCTTAAA
 AGTTCGGGCTCATGGAGGAGCAAACTGCCAGGCTAAAATTACGGCCTCCACTGAATAGAGCCGCTAC
 ATACCAGGCTGGGTAGTGAACGGGGAAATTGAAGCAAACCCGCAAGACCTGAAATGATGAGGATACTC
 AGACCACCTTGGAGGATTTAGCCGAACAGCATCCGGAGGTGCATTTGTGGTATCACAAGTCCCAAGCCT
 TCCCTTGCCTGACCAATACCCACCAAGTCAAATCACAGACCTTGATGCCACAGTTCATGAGGATAAGATT
 ATTCTTACATGGACAGCACAGGAGATAATTTTATGTTGGAAAAGTTCAACGTTATATCATAAGAATAA
 GTGCAAGTATTCTTATGATCTAAGAGACAGTTTTGATGATGCTCTTCAACTAAATACTACTGATCTGTACC
 AAAGGAGGCCAACTCCAAGGAAAGCTTTGCATTTAAACCAGAAAATATCTCAGAAGAAAATGCAACCCAC
 ATATTTATTGCCATTAAGATATAGATAAAAGCAATTTGACATCAAAAAGTATCCAACATTGCACAAGTAA
 CTTTGTATCCCTCAAGCAAATCCTGATGACATTGATCTACACCTACTCCTACTCCTACTCCTGATAA
 AAGTCATAATTCTGGAGTAAATTTTCTACGCTGGTATTGTCTGTGATTGGGTCTGTTGAATTTGTAAC
 TTTATTTAAGTACCACCATT

ACGCGTACGCGGCCGCTCGAGCAGAACTCATCTCAGAAGAGGATCTGGCAGCAAATGATATCCTGGATT
 ACAAGGATGACGACGATAAAGTTTAA

Protein Sequence: >RC215626 representing NM_012128
 Red=Cloning site Green=Tags(s)

MGLFRGFVLLVLCLLHQSNFSIKLNNNGFEDIVIVIDPSVPEDEKIIIEQIEDMVTASTYLFEATEKR
 FFFKNVILIPENWKENPQYKRPKHENHKHADVI VAPPTLPGRDEPYTKQFTECGEKGEYIHFTPDLLL
 KKQNEYGPPGKLFVHEWAHLRWGVFDEYNEDQPFYRAKSKKIEATRCSAGISGRNRVYKCGGSCLSRAC
 RIDSTTKLYGKDCQFFPDKVQTEKASIMFMQSIDSVVEFCNEKTHNQEAPSLQNIKCNFRSTWEVINSN
 DFKNTIPMVTPPPPPVFSLLLKISQRIVCLVLDKSGSMGGKDRLNRMNQAAKHLLQTVENGSWGMVHFD
 STATIVNKLIQIKSSDERNTLMAGLPTYPLGGTICSGIKYAFQVIGELHSQLDGSSEVLLLDGEDNTAS
 SCIDEVKQSGAIVHFIALGRAADEAVIEMSKITGGSHFYVSDEAQNGLIDAFGALTSNTDLSQKSLQL
 ESKGLTLNSAWMNDTVIIDSTVGKDTFFLITWNSLPPSISLWDPSTGIMENFTVDATSKMAYLSIPGTA
 KVGWTWAYNLQAKANPETLITVTSRAANSSVPPITVNAKMNKDVNSFSPMIVYAEILQGYVPVLANVT
 AFIESQNGHTEVLELLDNGAGADSFKNDGVYSRYFTAYTENGRYSLKVRAGHGANTARLKLRPPLNRAAY
 IPGWVNGEIEANPPRPEIDEDTQTTELEDFSRASGGAFVVSQVPSLPLPDQYPPSQITDL DATVHEDKI
 ILTWTAPGDNFDVGVQRYIIRISASILDRLDSFDDALQLNTTDLSPKEANSKESFAFKPENISEENATH
 IFIAIKSIDKSNLTSKVSNIAQVTLFIPQANPDDIDPTPTPTPDKSHNSGVNISTLVLVSVIGSVVIVN
 FILSTTI

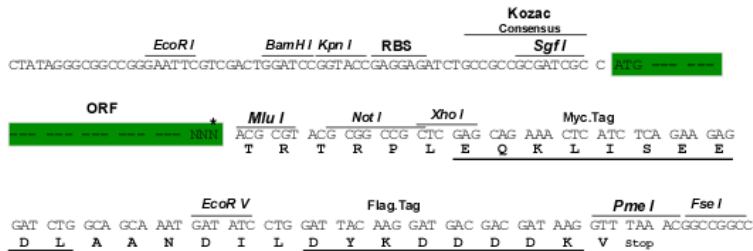
TRTRPLEQKLISEEDLAANDILDYKDDDDKV

Chromatograms: https://cdn.origene.com/chromatograms/mg2583_d09.zip

Restriction Sites: SgfI-MluI

Cloning Scheme:

Cloning sites used for ORF Shuttling:



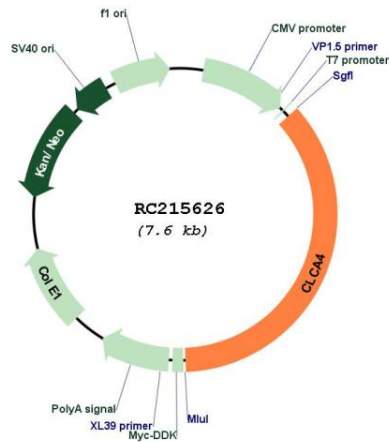
* The last codon before the Stop codon of the ORF

ACCN: NM_012128

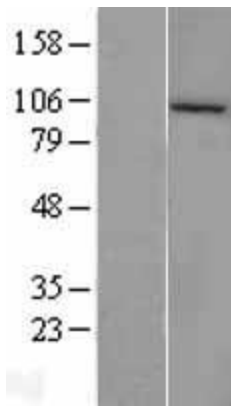
ORF Size: 2751 bp

OTI Disclaimer:	The molecular sequence of this clone aligns with the gene accession number as a point of reference only. However, individual transcript sequences of the same gene can differ through naturally occurring variations (e.g. polymorphisms), each with its own valid existence. This clone is substantially in agreement with the reference, but a complete review of all prevailing variants is recommended prior to use. More info
OTI Annotation:	This clone was engineered to express the complete ORF with an expression tag. Expression varies depending on the nature of the gene.
Components:	The ORF clone is ion-exchange column purified and shipped in a 2D barcoded Matrix tube containing 10ug of transfection-ready, dried plasmid DNA (reconstitute with 100 ul of water).
Reconstitution Method:	<ol style="list-style-type: none"> 1. Centrifuge at 5,000xg for 5min. 2. Carefully open the tube and add 100ul of sterile water to dissolve the DNA. 3. Close the tube and incubate for 10 minutes at room temperature. 4. Briefly vortex the tube and then do a quick spin (less than 5000xg) to concentrate the liquid at the bottom. 5. Store the suspended plasmid at -20°C. The DNA is stable for at least one year from date of shipping when stored at -20°C.
RefSeq:	NM_012128.4
RefSeq Size:	3285 bp
RefSeq ORF:	2760 bp
Locus ID:	22802
UniProt ID:	Q14CN2
Cytogenetics:	1p22.3
Protein Families:	Druggable Genome, Ion Channels: Other, Transmembrane
Protein Pathways:	Olfactory transduction
MW:	101.1 kDa
Gene Summary:	The protein encoded by this gene belongs to the calcium sensitive chloride conductance protein family. To date, all members of this gene family map to the same site on chromosome 1p31-p22 and share high degrees of homology in size, sequence and predicted structure, but differ significantly in their tissue distributions. Alternative splicing results in multiple transcript variants, only one of which is thought to be protein coding. [provided by RefSeq, Dec 2008]

Product images:



Circular map for RC215626



Western blot validation of overexpression lysate (Cat# [LY402153]) using anti-DDK antibody (Cat# [TA50011-100]). Left: Cell lysates from untransfected HEK293T cells; Right: Cell lysates from HEK293T cells transfected with RC215626 using transfection reagent MegaTran 2.0 (Cat# [TT210002]).