

Product datasheet for **RC215621**

LINGO4 (NM_001004432) Human Tagged ORF Clone

Product data:

Product Type:	Expression Plasmids
Product Name:	LINGO4 (NM_001004432) Human Tagged ORF Clone
Tag:	Myc-DDK
Symbol:	LINGO4
Synonyms:	DAAT9248; LRRN6D; PRO34002
Mammalian Cell Selection:	Neomycin
Vector:	pCMV6-Entry (PS100001)
E. coli Selection:	Kanamycin (25 ug/mL)



[View online »](#)

ORF Nucleotide Sequence:

>RC215621 representing NM_001004432
 Red=Cloning site Blue=ORF Green=Tags(s)

TTTTGTAATACGACTCACTATAGGGCGGCCGGGAATTCGTCGACTGGATCCGGTACCGAGGAGATCTGCC
 GCC**CGGATCGCC**

ATGGATGCAGCCACAGCTCCAAAGCAAGCCTGGCCCCATGGCCCCGCTCCTTTTCTCTCTCTCTAC
 CTGGAGGGAGCGGTGGCAGCTGCCCTGCTGTGTGTGACTGCACCTCCAGCCCCAGGCTGTGCTCTGTGG
 CCACAGGCAACTGGAGGCTGTACCTGGAGGACTCCCACTGGACACTGAGCTCCTGGACCTGAGTGGGAAC
 CGCCTGTGGGGCTCCAGCAGGGAATGCTCTCCCGCTGAGCCTGCTCCAGGAATTGGACCTCAGCTACA
 ACCAGCTCTCAACCCTTGAGCCTGGGGCTTCCATGGCTACAAAGCCTACTCACCTGAGGCTGCAGGG
 CAATCGGCTCAGAATCATGGGCCTGGGGTCTTCTCAGGCCTCTGCTCTGACCCTGCTGGACCTCCGC
 CTCACCAGATTGTTCTTCTTAGATGGAGCTTTTGGGAGCTAGGCAGCCTCCAGAAGCTGGAGGTTG
 GGGACAACCACCTGGTATTTGTGGCTCCGGGGCTTTGCAGGGCTAGCCAAGTTGAGCACCTCACCT
 GGAGCGTGCAACCTCAGCACAGTGCCTGGCCTAGCCCTTGCCCGTCTCCCGGCACTAGTGGCCCTAAGG
 CTTAGAGAACTGGATATTGGGAGGCTGCCAGCTGGGGCCCTGCGGGGGCTGGGGCAGCTCAAGGAGCTGG
 AGATCCACCTCTGGCCATCTCTGGAGGCTCTGGACCCTGGGAGCCTGGTTGGGCTCAATCTCAGCAGCCT
 GGCCATCACTCGTGCATCTGAGCTCGGTGCCCTTCAAAGCACTGTACCACCTCAGCTTCTCAGGGTC
 CTGGATCTGTCCAGAATCCCATCTCAGCCATCCAGCCCGAAGGCTCAGCCCCCTGGTGGCGCTCCAGG
 AGCTACGCTGTCCAGGGCATGCCTCACCTCCATTGCTGCCATGCCTCCATGGCTTACTGCCTTCCA
 CCTCTGGATGTGGCAGATAACGCCCTTACAGACTAGAGGAAACAGCTTCCCTTCTCCAGACAAACTG
 GTCACCTTGAGGCTGTCTGGCAACCCCTAACCTGTGACTGCCGCTCCTCTGGCTGCTCCGGCTCCGC
 GCCACCTGGACTTTGGCATGTCCCCCTGCCTGTGCTGGCCCCCATCATGTCCAGGGGAAGAGCCTGAA
 GGAGTTTTAGACATCCTGCCTCCAGGGCACTCACCTGCAAACAGCCCTGATCCGAAAGTCGGGGCT
 CGATGGGTCAATGAGAGGAGGGCGGGCATGCGGTTTTCTCTGCTCTGGAGATGGAGACCCAGCCCCCA
 CTGTCTCTGGATGAGGCCTCATGGGGCTTGGCTGGGCAGGGCTGGGAGAGTAAGGGTCTAGAGGATGG
 GACTGGAGATCCGCTCAGTGCAGCTACGGGACAGAGGGCCTATGTCTGTGTGGTTAGCAATGTCGCT
 GGGAACTGACTCCCTGAGGACCTGGTGGAACTCATCCAGGTGGAACCAACGGCACACTTTCTGACC
 CCAACATACCCGTGCCAGGGATCCAGGGCCTTTTTTTCTGGATAGCAGAGGTGTGGCCATGGTCTGGC
 AGTCGGCTTCTCCCTTCTCACCTCAGTACCCTCTGCTTTGGCTGATTGCCCTTTGGAGCAAGGGC
 AAAGTCCGGTCAAACATCACATGACCTTTGACTTTGTGGCACCTCGGCCCTCTGGGGATAAAAACCTCTG
 GGGTAACCGGGTCACTGCCAAGCTCTTC

ACGCGTACGCGGGCGCTCGAGCAGAAACTCATCTCAGAAGAGGATCTGGCAGCAAATGATATCCTGGATT
 ACAAGGATGACGACGATAAGGTTTAA

Protein Sequence:

>RC215621 representing NM_001004432
 Red=Cloning site Green=Tags(s)

MDAATAPKQAWPPWPPLFLLLLPGSGGSCPAVCDCTSQPQAVLCGHRQLEAVPGGLPLDTELLDL SGN
 RLWGLQQGML SRLSLLQELDL SYNQLSTLEPGAFHGLQSL LTLRLQGNRLRIMPGVFSGLSAL TLLDLR
 LNQIVLFLDGAFGELGSLQKLEVDNHLV FVAPGAFAGLAKLSTLTLERCNLSTVPLALARLPALVALR
 LRELDIGRLPAGALRGLGQLKELEIHLWPSLEALDPGSLVGLNLSSLAITRCNLSSVPFQALYHLSFLRV
 LDLSQNPISAI PARRLSPLVRLQELRLSGACLTSIAAHAFHGLTAFHLLDVADNALQTLEETAFFSPDKL
 VTLRLSGNPLTDCRLLWLLRLRRHLDFGMSPPACAGPHHVQGKSLKEFSDILPPGHFTCKPALIRKSGP
 RWWIAEEGGHAFVSCSGDGPAPTYSWMPHGAWLGRAGRVRVLEDGTLEIRSVQLRDRGAYVCVVSNA
 GNDSLRTWLEVIQVEPPNGT LSDPNITVPGIPGPFLLDSRGVAMVLAVGFLPFLTSVTLFCGLIALWSKG
 KGRVKHMTFDFVAPRPSGDKNSGGNRVTAKLF

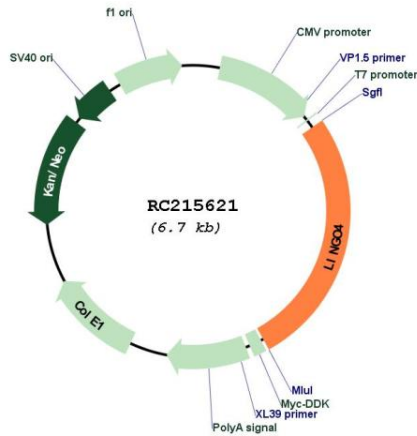
TRTRPLEQKLISEEDLAANDILDYKDDDDKV

Chromatograms:

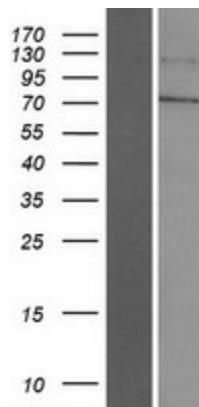
https://cdn.origene.com/chromatograms/mk8001_h09.zip

UniProt ID: Q6UY18
Cytogenetics: 1q21.3
Protein Families: Druggable Genome, Transmembrane
MW: 63.6 kDa

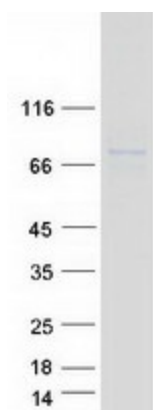
Product images:



Circular map for RC215621



Western blot validation of overexpression lysate (Cat# [LY423750]) using anti-DDK antibody (Cat# [TA50011-100]). Left: Cell lysates from untransfected HEK293T cells; Right: Cell lysates from HEK293T cells transfected with RC215621 using transfection reagent MegaTran 2.0 (Cat# [TT210002]).



Coomassie blue staining of purified LINGO4 protein (Cat# [TP315621]). The protein was produced from HEK293T cells transfected with LINGO4 cDNA clone (Cat# RC215621) using MegaTran 2.0 (Cat# [TT210002]).